

Ballacetine Castle Clock Tower (2)

Composer: Mieko Ishikawa

Game: Ys III: Wanderers from Ys

pianogame.org

♩ = 150

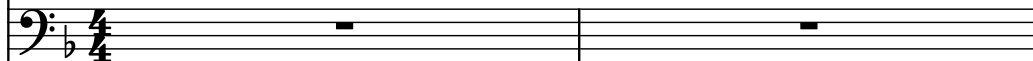
Saw Synthesizer, YS III



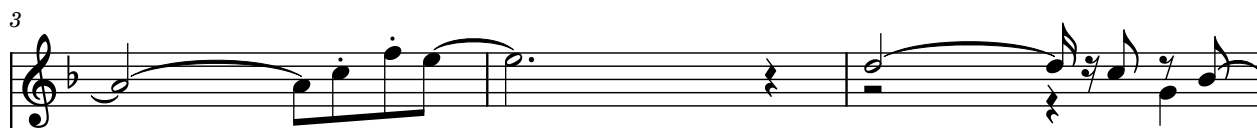
Bass Guitar, Clock Tower



Bassoon, Sequenced By



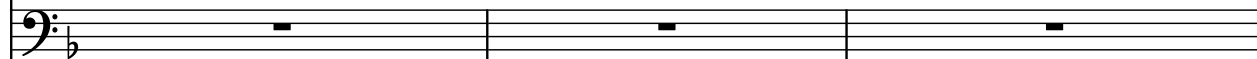
Synth.



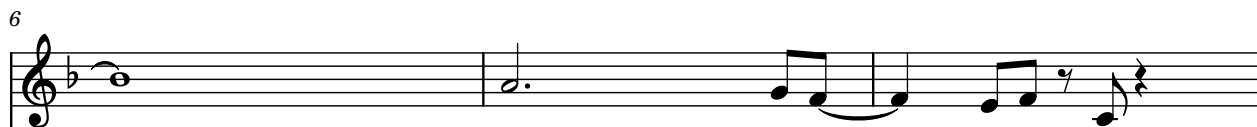
B. Guit.



Bsn.



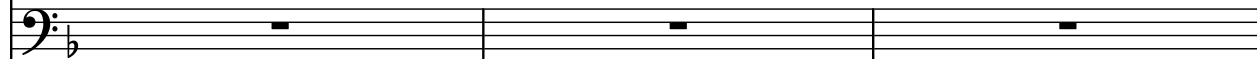
Synth.



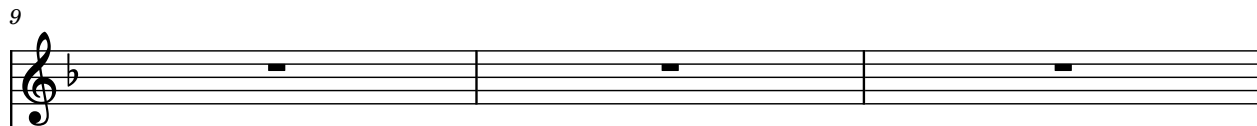
B. Guit.



Bsn.



Synth.



B. Guit.



Bsn.



12

Synth.

B. Guit.

Bsn.

Diagram of a guitar fretboard showing the first five frets. The strings are numbered 1 to 6 from top to bottom. A circle with a dot is placed on the 1st fret of the 6th string.

15

Synth.

B. Guit.

Bsn.

18

Synth.

B. Guit.

Bsn.

21

Synth.

B. Guit.

Bsn.

24

Synth.

B. Guit.

Bsn.

27

Synth.

B. Guit.

Bsn.

Measures 27-29. The Synth. part has whole rests. The B. Guit. part has a rhythmic pattern of eighth and sixteenth notes. The Bsn. part has whole rests.

30

Synth.

B. Guit.

Bsn.

Measures 30-32. The Synth. part has whole rests. The B. Guit. part has a rhythmic pattern of eighth and sixteenth notes. The Bsn. part has whole rests.