

Boss: Kabula

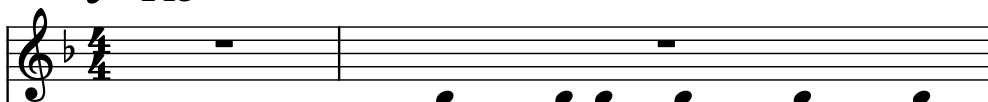
Composer: Jun Ishikawa

Game: Kirby Super Star Ultra

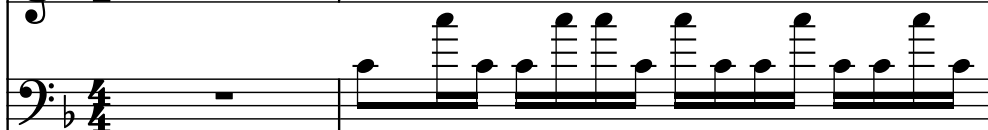
pianogame.org

♩ = 143

Mallet Synthesizer, Sampler



Bass Guitar, Electric Bass



Electric Piano, Electric Piano



3

Mal. Syn.



B. Guit.

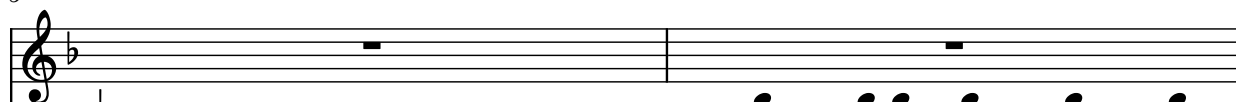


El. Pno.



5

Mal. Syn.



B. Guit.



El. Pno.



7

Mal. Syn.



B. Guit.



El. Pno.



9

Mal. Syn.

B. Guit.

El. Pno.

Measures 9-10. Mal. Syn. is silent. B. Guit. plays a descending eighth-note scale in the left hand. El. Pno. plays a rhythmic pattern of eighth notes with slurs and ties.

11

Mal. Syn.

B. Guit.

El. Pno.

Measures 11-12. Mal. Syn. is silent. B. Guit. continues the descending eighth-note scale. El. Pno. continues the rhythmic pattern with some chromatic movement.

13

Mal. Syn.

B. Guit.

El. Pno.

Measures 13-14. Mal. Syn. is silent. B. Guit. continues the descending eighth-note scale. El. Pno. continues the rhythmic pattern with some chromatic movement.

15

Mal. Syn.

B. Guit.

El. Pno.

Measures 15-16. Mal. Syn. is silent. B. Guit. continues the descending eighth-note scale. El. Pno. continues the rhythmic pattern with some chromatic movement.

17

Mal. Syn.

B. Guit.

El. Pno.

Measures 17-18. Mal. Syn. has a whole rest in measure 17 and a melodic line in measure 18. B. Guit. has a continuous eighth-note bass line. El. Pno. has a continuous eighth-note bass line with some accidentals.

19

Mal. Syn.

B. Guit.

El. Pno.

Measures 19-20. Mal. Syn. has a melodic line in measure 19 and a whole rest in measure 20. B. Guit. has a continuous eighth-note bass line. El. Pno. has a continuous eighth-note bass line with some accidentals.

21

Mal. Syn.

B. Guit.

El. Pno.

Measures 21-22. Mal. Syn. has a melodic line in measure 21 and a whole rest in measure 22. B. Guit. has a continuous eighth-note bass line. El. Pno. has a continuous eighth-note bass line with some accidentals.

23

Mal. Syn.

B. Guit.

El. Pno.

Measures 23-24. Mal. Syn. has a melodic line in measure 23 and a whole rest in measure 24. B. Guit. has a continuous eighth-note bass line. El. Pno. has a continuous eighth-note bass line with some accidentals.

25

Mal. Syn.

B. Guit.

El. Pno.

Measures 25-26. Mal. Syn. has a whole rest in measure 25 and a whole note in measure 26. B. Guit. and El. Pno. play a continuous eighth-note pattern with various accidentals.

27

Mal. Syn.

B. Guit.

El. Pno.

Measures 27-28. Mal. Syn. has a whole rest in measure 27 and a whole note in measure 28. B. Guit. and El. Pno. play a continuous eighth-note pattern with various accidentals and triplets.

29

Mal. Syn.

B. Guit.

El. Pno.

Measures 29-30. Mal. Syn. has a whole rest in measure 29 and a whole note in measure 30. B. Guit. and El. Pno. play a continuous eighth-note pattern with various accidentals and triplets.

31

Mal. Syn.

B. Guit.

El. Pno.

Measures 31-32. Mal. Syn. has a whole rest in measure 31 and a whole note in measure 32. B. Guit. and El. Pno. play a continuous eighth-note pattern with various accidentals and triplets.

33

Mal. Syn.

B. Guit.

El. Pno.

Measures 33-34. Mal. Syn. is silent. B. Guit. plays a descending eighth-note scale in the first measure, then a series of chords. El. Pno. plays a sequence of chords with eighth-note patterns.

35

Mal. Syn.

B. Guit.

El. Pno.

Measures 35-36. Mal. Syn. is silent. B. Guit. plays a series of chords. El. Pno. plays a sequence of chords with eighth-note patterns.

37

Mal. Syn.

B. Guit.

El. Pno.

Measures 37-38. Mal. Syn. is silent. B. Guit. plays a series of chords. El. Pno. plays a sequence of chords with eighth-note patterns.