

# Kasu High School

Composer: Tatsuya Kishida

Game: Persona 2: Eternal Punishment

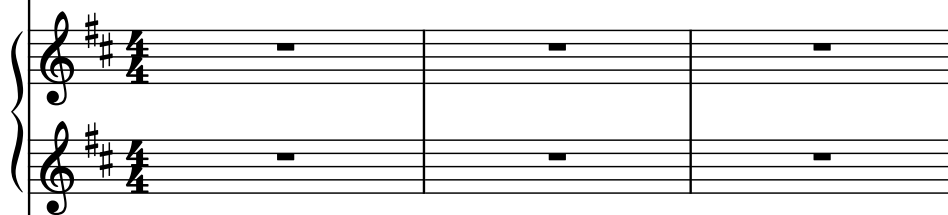
[pianogame.org](http://pianogame.org)

♩ = 100

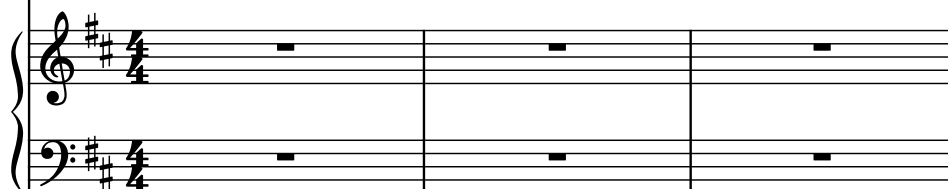
Bass Synthesizer, MIDI out



Piano, MIDI out #2

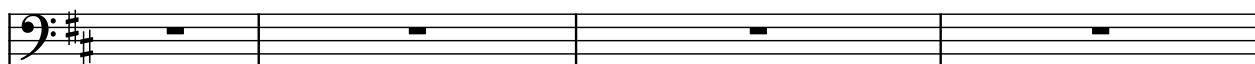


Echoes Synthesizer, MIDI out #3



4

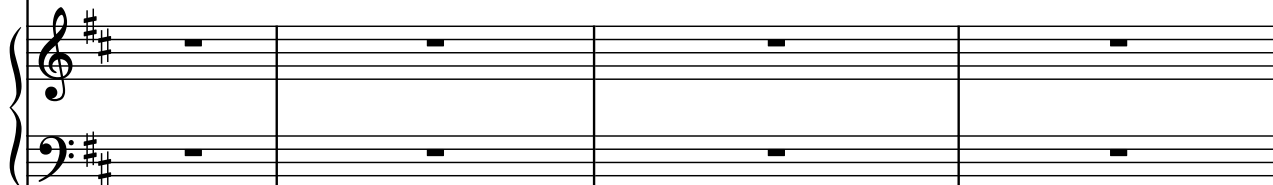
Synth.



Pno.

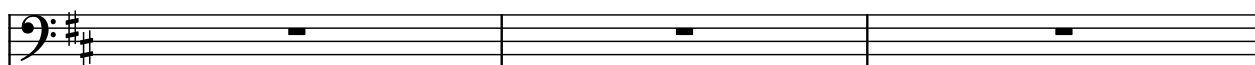


Synth.



8

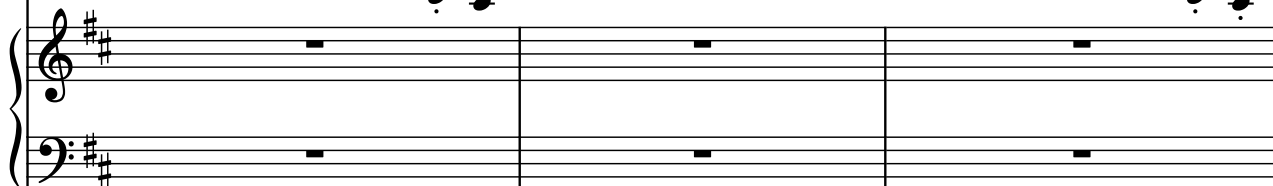
Synth.



Pno.



Synth.



11

Synth.

Pno.

Synth.

Measures 11-14. The Synth. part (top) has a bass line starting at measure 13. The Pno. part (middle) has a complex texture with many beamed sixteenth notes in the right hand and chords in the left hand. The Synth. part (bottom) is silent.

15

Synth.

Pno.

Synth.

Measures 15-20. The Synth. part (top) has a bass line. The Pno. part (middle) has a sustained bass line with a melodic line in the right hand. The Synth. part (bottom) is silent.

21

Synth.

Pno.

Synth.

23

Synth.

Pno.

Synth.

25

Synth.

Pno.

Synth.

Measures 25-26. The Pno. staff features a complex melody with triplets and a descending line. The Synth. staves have rests and a triplet in the right hand of the bottom staff.

27

Synth.

Pno.

Synth.

Measures 27-28. The Pno. staff features a complex melody with triplets and a descending line. The Synth. staves have rests and a triplet in the right hand of the bottom staff.

29

Synth.

Pno.

Synth.

Measure 29: Synth. plays a single note. Pno. has a complex rhythmic pattern with triplets. Measure 30: Pno. continues with triplets. Synth. is silent.

31

Synth.

Pno.

Synth.

Measure 31: Synth. plays a single note. Pno. has a complex rhythmic pattern with triplets. Measure 32: Pno. continues with triplets. Synth. is silent.

33

Synth.

Pno.

Synth.

Measure 33: The Pno. staff begins with a triplet of eighth notes (F#, C#, F#) in the right hand, followed by a triplet of eighth notes (C#, F#, C#) in the left hand. The Synth. staff has whole rests. The bottom Synth. staff has whole rests.

Measure 34: The Pno. staff continues with a triplet of eighth notes (F#, C#, F#) in the right hand, followed by a triplet of eighth notes (C#, F#, C#) in the left hand. The Synth. staff has whole rests. The bottom Synth. staff has whole rests.

35

Synth.

Pno.

Synth.

Measure 35: The Synth. staff has a melody (F#, C#, F#, C#, F#, C#) in the right hand. The Pno. staff has a triplet of eighth notes (F#, C#, F#) in the right hand, followed by a triplet of eighth notes (C#, F#, C#) in the left hand. The bottom Synth. staff has whole rests.

Measure 36: The Synth. staff has a whole rest. The Pno. staff continues with a triplet of eighth notes (F#, C#, F#) in the right hand, followed by a triplet of eighth notes (C#, F#, C#) in the left hand. The bottom Synth. staff has whole rests.

37

Synth.

Pno.

Synth.

38

39

Synth.

Pno.

Synth.

40



41

Synth.

Pno.

Synth.

41

43

Synth.

Pno.

Synth.

43

46

Synth.

Pno.

Synth.

Measures 46-49. The Synth. part (top) plays a melodic line in the bass clef. The Pno. part (middle) has a sustained chord in the left hand and a rhythmic pattern in the right hand. The Synth. part (bottom) is silent.

50

Synth.

Pno.

Synth.

Measures 50-51. The Synth. part (top) is silent. The Pno. part (middle) plays a rhythmic pattern in both hands. The Synth. part (bottom) is silent.