

# Pop Ditty

Composer: Hirokazu Tanaka

Game: Challenge and Fighting (Japan)

[pianogame.org](http://pianogame.org)

$\text{♩} = 128$

4

7

10

13

16

20

28

32

36

40

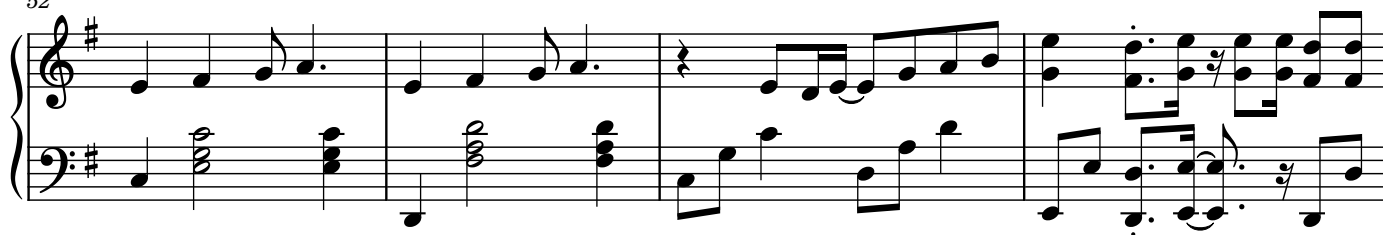
44

48

48

This musical score segment contains measures 48 through 51. The melody in the treble clef continues with a sequence of eighth and sixteenth notes, including a triplet in measure 50. The bass line provides harmonic support with chords and single notes, including a key signature change to one sharp (F#) in measure 51.

52



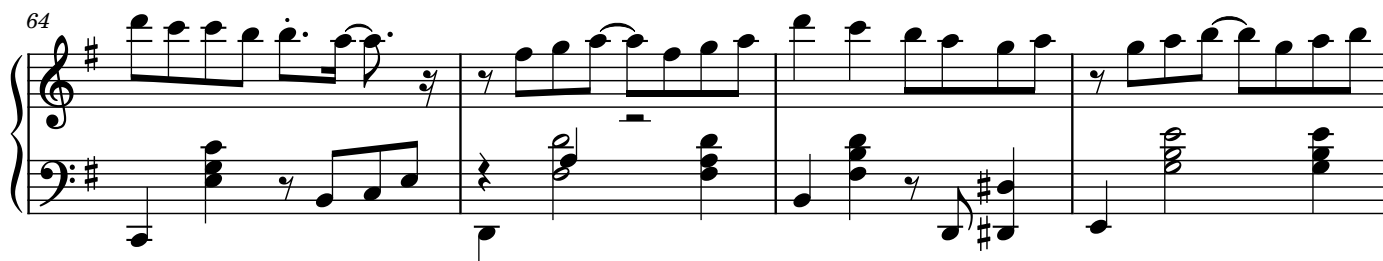
56



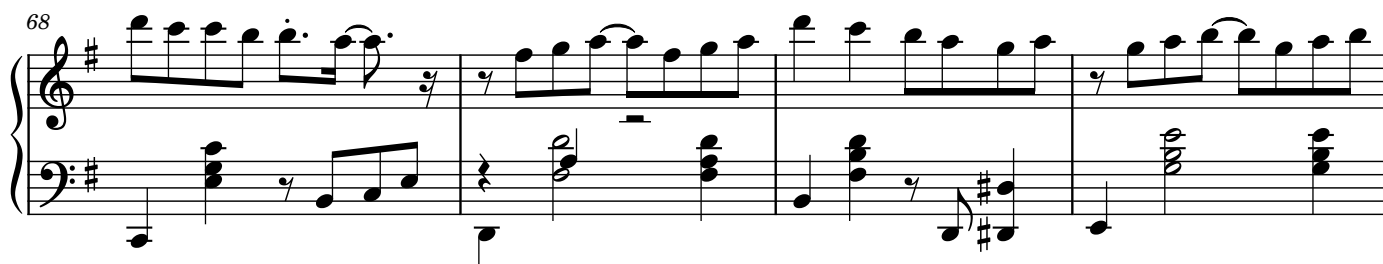
60



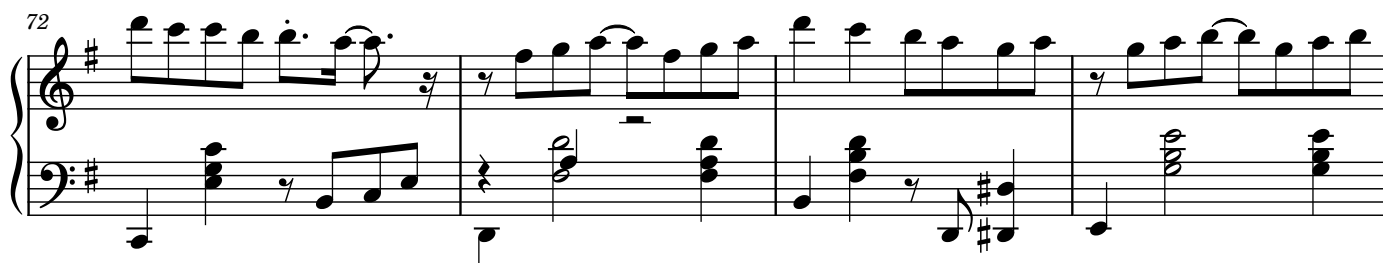
64



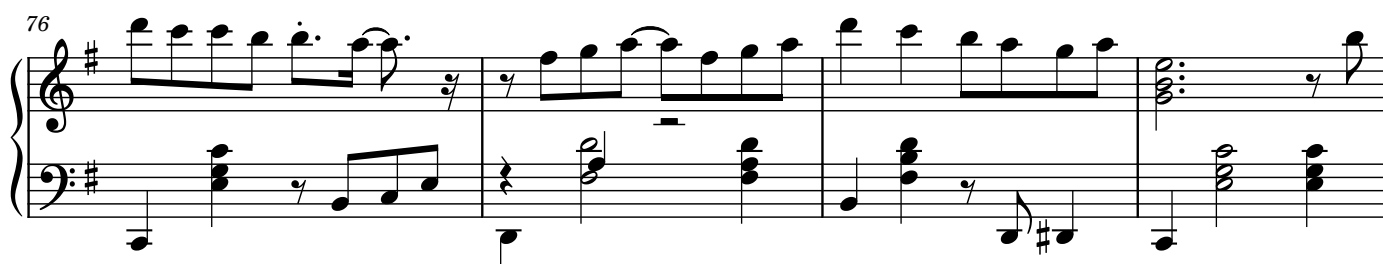
68



72



76



80

This system contains measures 80 through 83. The key signature is one sharp (F#). The melody in the right hand features eighth and sixteenth notes, often beamed together. The left hand provides a steady accompaniment with quarter and eighth notes. Measure 83 ends with a double bar line.

84

This system contains measures 84 through 86. The musical texture continues with similar rhythmic patterns. Measure 86 ends with a double bar line.

87

This system contains measures 87 through 90. The right hand has more complex phrasing with slurs and ties. Measure 90 ends with a double bar line.

90

This system contains measures 90 through 93. The left hand has some rests in measures 90 and 91. Measure 93 ends with a double bar line.

94

This system contains measures 94 through 97. The melody in the right hand becomes more active with sixteenth notes. Measure 97 ends with a double bar line.

98

This system contains measures 98 through 101. The right hand features a prominent melodic line with slurs. Measure 101 ends with a double bar line.

102

This system contains measures 102 through 105. The right hand continues with a flowing melody. Measure 105 ends with a double bar line.

106

System 106-109: Treble and bass staves in G major. The treble staff features a continuous eighth-note melody with slurs and ties. The bass staff provides a harmonic accompaniment with chords and moving lines.

110

System 110-113: Continuation of the musical theme from the previous system, maintaining the same melodic and harmonic patterns.

114

System 114-117: Continuation of the musical theme, showing the progression of the melody and accompaniment.

118

System 118-121: Continuation of the musical theme, featuring more complex rhythmic patterns in the treble staff.

122

System 122-124: Continuation of the musical theme, with the bass staff showing more active movement.

125

System 125-127: Continuation of the musical theme, showing the final measures of this section.

128

System 128-131: Continuation of the musical theme, concluding the piece with a final cadence.