

Title Track

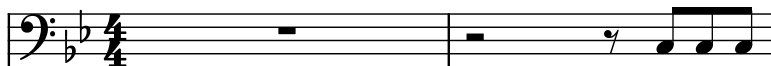
Composer: Rob Hubbard

Game: Knight Games

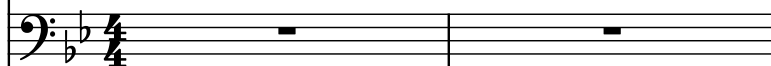
pianogame.org

♩ = 175

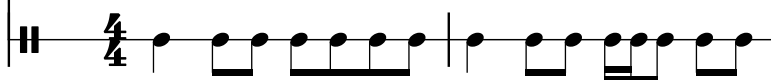
Trombone, Theme to the Commodore 64 Game:



Effect Synthesizer, "Knight Games"



Tambourine, original music by Ben Daglish

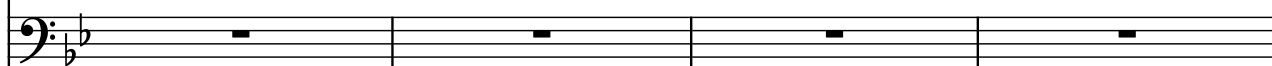


3

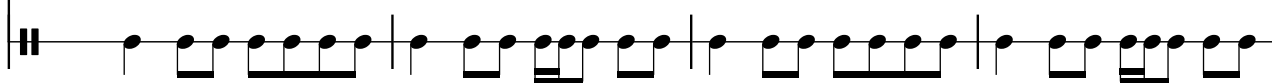
Tbn.



Synth.

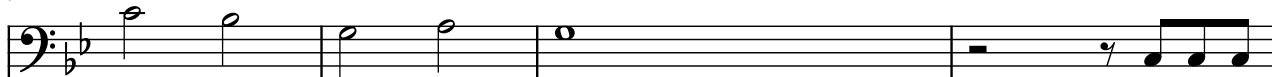


Tamb.

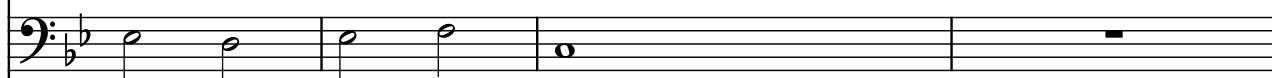


7

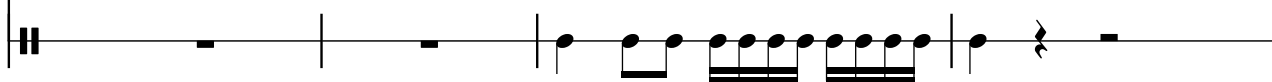
Tbn.



Synth.



Tamb.

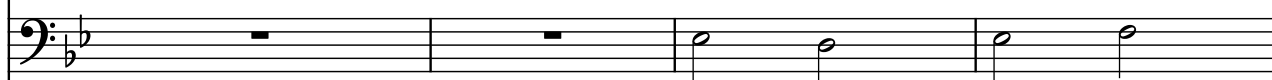


11

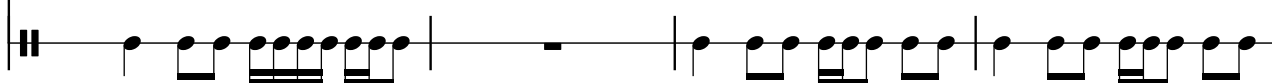
Tbn.



Synth.

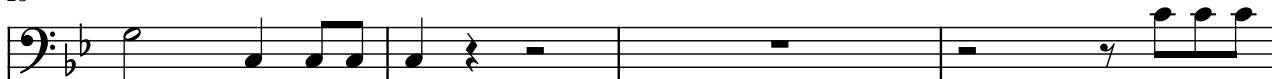


Tamb.

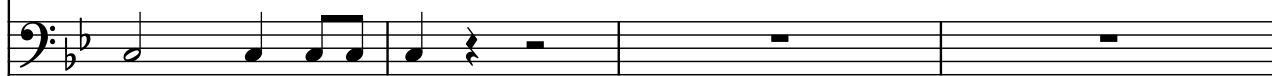


15

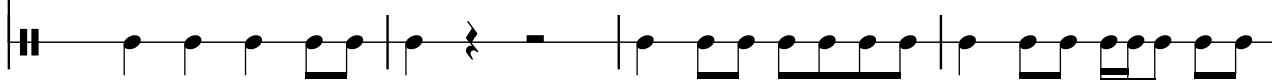
Tbn.



Synth.



Tamb.



19

Tbn.

Synth.

Tamb.

Measures 19-22: Tbn. (Bass Clef, B-flat key) plays a melodic line with slurs and accents. Synth. (Bass Clef, B-flat key) has whole rests. Tamb. (Cymbal) plays a continuous eighth-note pattern.

23

Tbn.

Synth.

Tamb.

Measures 23-26: Tbn. (Bass Clef, B-flat key) plays a melodic line with slurs and accents. Synth. (Bass Clef, B-flat key) plays a melodic line with slurs and accents. Tamb. (Cymbal) plays a continuous eighth-note pattern.

27

Tbn.

Synth.

Tamb.

Measures 27-30: Tbn. (Bass Clef, B-flat key) plays a melodic line with slurs and accents. Synth. (Bass Clef, B-flat key) plays a melodic line with slurs and accents. Tamb. (Cymbal) plays a continuous eighth-note pattern.

31

Tbn.

Synth.

Tamb.

Measures 31-34: Tbn. (Bass Clef, B-flat key) plays a melodic line with slurs and accents. Synth. (Bass Clef, B-flat key) plays a melodic line with slurs and accents. Tamb. (Cymbal) plays a continuous eighth-note pattern.