

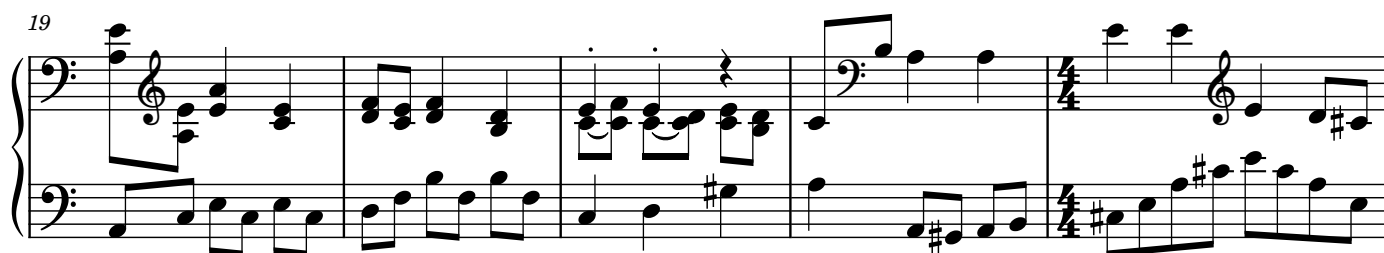
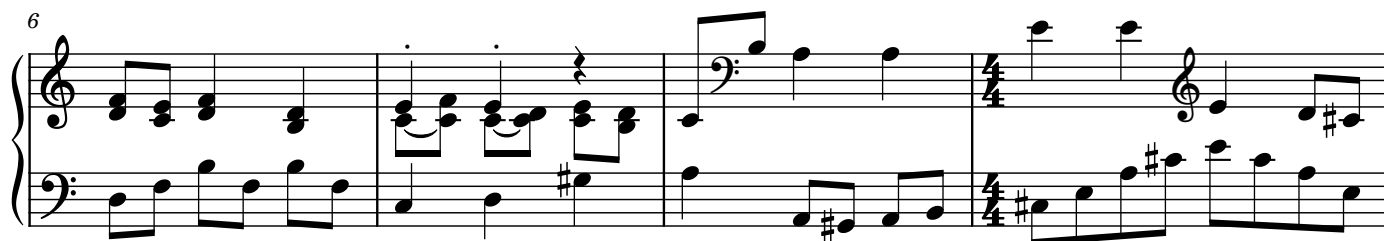
Map Theme

Composer: Michael Giacchino

Game: Knight's Quest

pianogame.org

♩ = 150



System 1 (measures 28-32): Treble clef has a whole rest in measure 28. Bass clef has a descending eighth-note scale: G#4, F#4, E4, D4, C4, B3, A3, G3. Measures 29-32 are in 3/4 time. Treble clef has chords: G#4-A4-B4 (m29), G#4-A4-B4 (m30), G#4-A4-B4 (m31), and a sixteenth-note run: G#4-A4-B4-C5-D5-E5 (m32). Bass clef has chords: G3-A3-B3 (m29), G3-A3-B3 (m30), G3-A3-B3 (m31), and a half-note scale: G3, A3, B3, C4 (m32).

System 2 (measures 33-37): Treble clef has chords: G#4-A4-B4 (m33), G#4-A4-B4 (m34), G#4-A4-B4 (m35), and a half-note scale: G#4, A4, B4, C5 (m36). Bass clef has chords: G3-A3-B3 (m33), G3-A3-B3 (m34), G3-A3-B3 (m35), and a half-note scale: G3, A3, B3, C4 (m36). Measures 37-41 are in 4/4 time. Treble clef has a half-note scale: G#4, A4, B4, C5, D5, E5, F#5, G5 (m37). Bass clef has a half-note scale: G3, A3, B3, C4, D4, E4, F#4, G4 (m37).

System 3 (measures 38-41): Treble clef has a half-note scale: G#4, A4, B4, C5, D5, E5, F#5, G5 (m38). Bass clef has a half-note scale: G3, A3, B3, C4, D4, E4, F#4, G4 (m38). Measures 39-41 are in 4/4 time. Treble clef has a half-note scale: G#4, A4, B4, C5, D5, E5, F#5, G5 (m39). Bass clef has a half-note scale: G3, A3, B3, C4, D4, E4, F#4, G4 (m39).

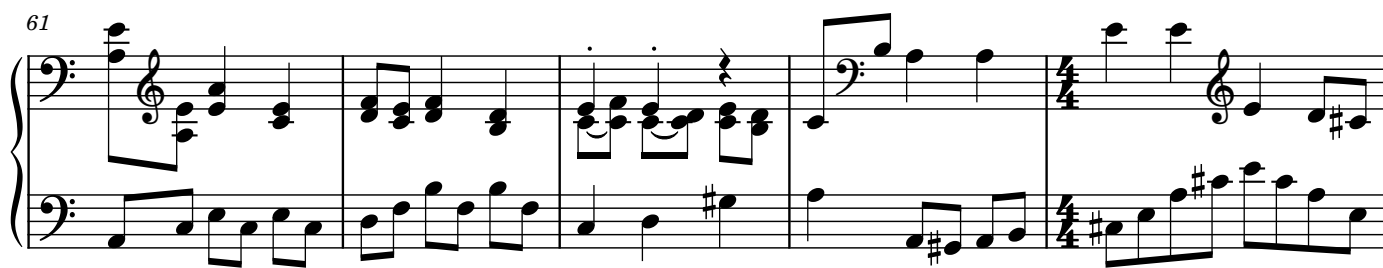
System 4 (measures 42-46): Treble clef has a whole rest in measure 42. Bass clef has a descending eighth-note scale: G#4, F#4, E4, D4, C4, B3, A3, G3. Measures 43-46 are in 3/4 time. Treble clef has chords: G#4-A4-B4 (m43), G#4-A4-B4 (m44), G#4-A4-B4 (m45), and a sixteenth-note run: G#4-A4-B4-C5-D5-E5 (m46). Bass clef has chords: G3-A3-B3 (m43), G3-A3-B3 (m44), G3-A3-B3 (m45), and a half-note scale: G3, A3, B3, C4 (m46).

System 5 (measures 47-51): Treble clef has chords: G#4-A4-B4 (m47), G#4-A4-B4 (m48), G#4-A4-B4 (m49), and a half-note scale: G#4, A4, B4, C5 (m50). Bass clef has chords: G3-A3-B3 (m47), G3-A3-B3 (m48), G3-A3-B3 (m49), and a half-note scale: G3, A3, B3, C4 (m50). Measures 51-55 are in 4/4 time. Treble clef has a half-note scale: G#4, A4, B4, C5, D5, E5, F#5, G5 (m51). Bass clef has a half-note scale: G3, A3, B3, C4, D4, E4, F#4, G4 (m51).

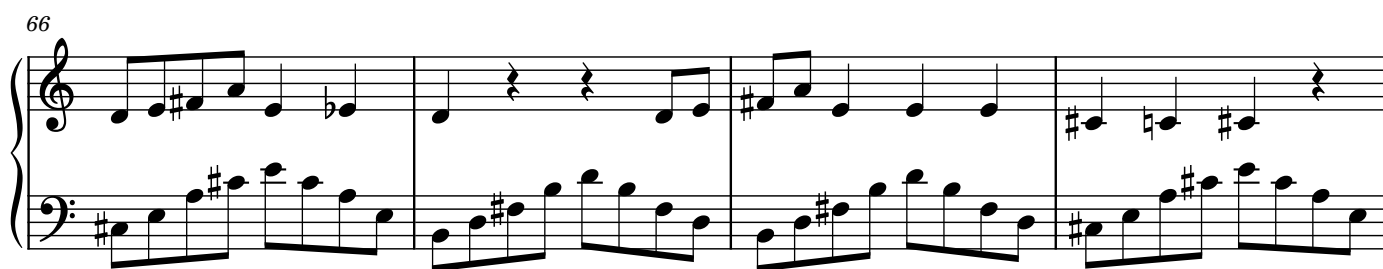
System 6 (measures 52-55): Treble clef has a half-note scale: G#4, A4, B4, C5, D5, E5, F#5, G5 (m52). Bass clef has a half-note scale: G3, A3, B3, C4, D4, E4, F#4, G4 (m52). Measures 53-55 are in 4/4 time. Treble clef has a half-note scale: G#4, A4, B4, C5, D5, E5, F#5, G5 (m53). Bass clef has a half-note scale: G3, A3, B3, C4, D4, E4, F#4, G4 (m53).

System 7 (measures 56-60): Treble clef has a whole rest in measure 56. Bass clef has a descending eighth-note scale: G#4, F#4, E4, D4, C4, B3, A3, G3. Measures 57-60 are in 3/4 time. Treble clef has chords: G#4-A4-B4 (m57), G#4-A4-B4 (m58), G#4-A4-B4 (m59), and a sixteenth-note run: G#4-A4-B4-C5-D5-E5 (m60). Bass clef has chords: G3-A3-B3 (m57), G3-A3-B3 (m58), G3-A3-B3 (m59), and a half-note scale: G3, A3, B3, C4 (m60).

61



66



70

