

# Stage 6 - "Demon Seed" (3)

Composer: Jun Funahashi

Game: Castlevania 3

[pianogame.org](http://pianogame.org)

♩ = 100

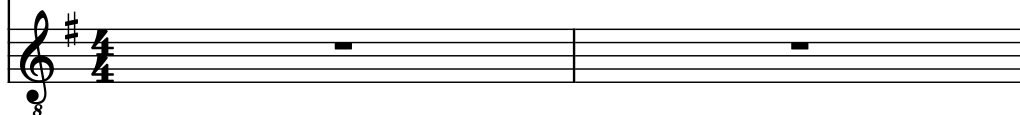
5-str. Electric Bass, Staff



5-str. Electric Bass, Staff-3



Electric Guitar, Staff-5



3

El. B.



El. B.



El. Guit.



5

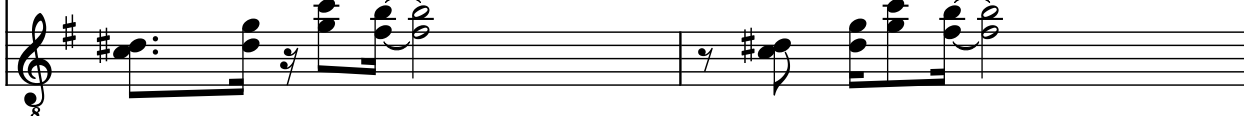
El. B.



El. B.



El. Guit.



7

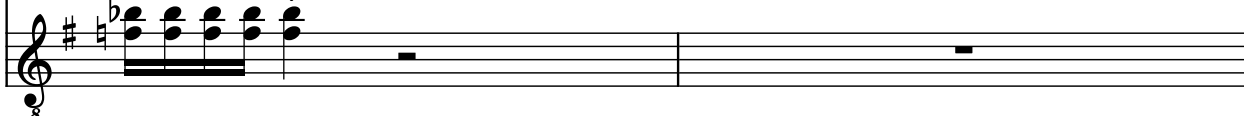
El. B.



El. B.



El. Guit.



9

El. B.

El. B.

El. Guit.

11

El. B.

El. B.

El. Guit.

13

El. B.

El. B.

El. Guit.

15

El. B.

El. B.

El. Guit.

17

El. B.

El. B.

El. Guit.

19

El. B.

El. B.

El. Guit.

21

El. B.

El. B.

El. Guit.

23

El. B.

El. B.

El. Guit.

25

El. B.

El. B.

El. Guit.

This system contains measures 25 and 26. The first two staves are for Electric Bass (El. B.) in bass clef with a key signature of one sharp (F#). The third staff is for Electric Guitar (El. Guit.) in treble clef with a key signature of one sharp (F#). Measure 25 features a rhythmic pattern of eighth notes in the bass and a chordal accompaniment in the guitar. Measure 26 continues this pattern with some melodic variation in the bass line.

27

El. B.

El. B.

El. Guit.

This system contains measures 27 and 28. The instrumentation remains the same. Measure 27 shows a continuation of the bass line and guitar accompaniment. Measure 28 features a more complex bass line and a guitar part that includes a long, sustained chord or arpeggio.

29

El. B.

El. B.

El. Guit.

This system contains measures 29 and 30. The instrumentation remains the same. Measure 29 shows a continuation of the bass line and guitar accompaniment. Measure 30 features a more complex bass line and a guitar part that includes a long, sustained chord or arpeggio.

31

El. B.

El. B.

El. Guit.

This system contains measures 31 and 32. The instrumentation remains the same. Measure 31 shows a continuation of the bass line and guitar accompaniment. Measure 32 features a more complex bass line and a guitar part that includes a long, sustained chord or arpeggio.

33

El. B.

El. B.

El. Guit.

Measures 33 and 34 of the musical score. The first two staves are for Electric Bass (El. B.) in bass clef with a key signature of one sharp (F#). The third staff is for Electric Guitar (El. Guit.) in treble clef with a key signature of one sharp (F#). Measure 33 shows a bass line with eighth and quarter notes and a guitar line with chords and eighth notes. Measure 34 continues the bass line and features a triplet of eighth notes in the guitar line, indicated by a bracket and the number '3'.

35

El. B.

El. B.

El. Guit.

Measures 35 and 36 of the musical score. The first two staves are for Electric Bass (El. B.) in bass clef with a key signature of one sharp (F#). The third staff is for Electric Guitar (El. Guit.) in treble clef with a key signature of one sharp (F#). Measure 35 shows a bass line with eighth and quarter notes and a guitar line with chords and eighth notes. Measure 36 continues the bass line and features a triplet of eighth notes in the guitar line, indicated by a bracket and the number '3'.

37

El. B.

El. B.

El. Guit.

Measures 37 and 38 of the musical score. The first two staves are for Electric Bass (El. B.) in bass clef with a key signature of one sharp (F#). The third staff is for Electric Guitar (El. Guit.) in treble clef with a key signature of one sharp (F#). Measure 37 shows a bass line with eighth and quarter notes and a guitar line with chords and eighth notes. Measure 38 continues the bass line and features a triplet of eighth notes in the guitar line, indicated by a bracket and the number '3'.

39

El. B.

El. B.

El. Guit.

Measures 39 and 40 of the musical score. The first two staves are for Electric Bass (El. B.) in bass clef with a key signature of one sharp (F#). The third staff is for Electric Guitar (El. Guit.) in treble clef with a key signature of one sharp (F#). Measure 39 shows a bass line with eighth and quarter notes and a guitar line with chords and eighth notes. Measure 40 continues the bass line and features a triplet of eighth notes in the guitar line, indicated by a bracket and the number '3'.

41

El. B.

El. B.

El. Guit.

43

El. B.

El. B.

El. Guit.

45

El. B.

El. B.

El. Guit.

47

El. B.

El. B.

El. Guit.

49

El. B.

El. B.

El. Guit.

3

51

El. B.

El. B.

El. Guit.

3

53

El. B.

El. B.

El. Guit.

3

55

El. B.

El. B.

El. Guit.

3



57

El. B.

El. B.

El. Guit.