

File Select

Composer: Mitsuhiro Kaneda

Game: Legend of Zelda, The: The Minish Cap

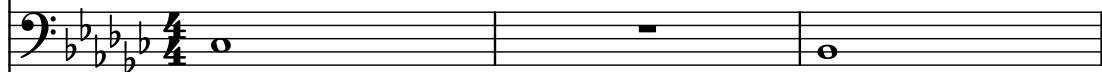
pianogame.org

♩ = 152

Violin, Background



Violoncello, Bassline



Piano, Melody

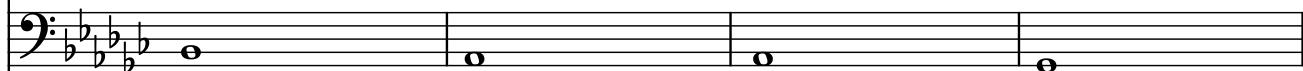


4

Vln.



Vc.



Pno.

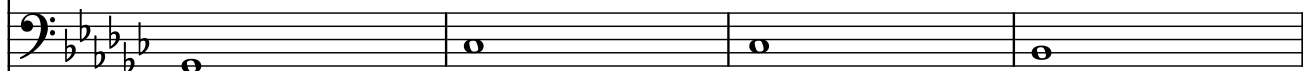


8

Vln.



Vc.



Pno.



♩ = 137

♩ = 139

♩ = 141

♩ = 142

♩ = 144

♩ = 146

♩ = 147

♩ = 148

♩ = 149

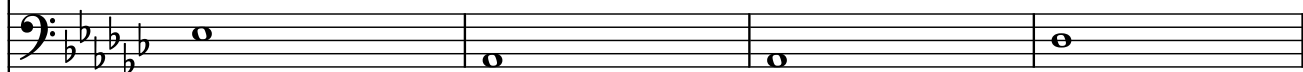
♩ = 151

12

Vln.



Vc.



Pno.



152
135
101
102
104
105
107
110
111
112
114
115
116
119
121
122
124
127
128
130
131
132
133
136

16

Vln.

Vc.

Pno.

20

Vln.

Vc.

Pno.

24

Vln.

Vc.

Pno.

28

Vln.

Vc.

Pno.

32

Vln.

Vc.

Pno.

36

Vln.

Vc.

Pno.

40

Vln.

Vc.

Pno.

Vln. ⁴⁴
 Vc.
 Pno.

= 137
 = 139
 = 141
 = 142
 = 144
 = 146
 = 147
 = 148
 = 149
 = 151

= 152
 = 135
 = 101
 = 102
 = 104
 = 105
 = 107
 = 110
 = 111
 = 112
 = 114
 = 115
 = 116
 = 119
 = 121
 = 122
 = 124
 = 127
 = 128
 = 130
 = 131
 = 132
 = 133
 = 136

Vln. ⁴⁸
 Vc.
 Pno.

52

Vln.

Vc.

Pno.

Violin (Vln.) part: Continuous eighth-note pattern in the treble clef, starting on G4 and moving up stepwise.

Viola (Vc.) part: Sustained low notes in the bass clef, starting on G2 and moving up stepwise.

Piano (Pno.) part: Sequence of eighth and quarter notes in the treble clef, starting on G4 and moving up stepwise.

56

Vln.

Vc.

Pno.

Violin (Vln.) part: Continuous eighth-note pattern in the treble clef, starting on G4 and moving up stepwise.

Viola (Vc.) part: Sustained low notes in the bass clef, starting on G2 and moving up stepwise.

Piano (Pno.) part: Sequence of eighth and quarter notes in the treble clef, starting on G4 and moving up stepwise.

60

Vln.

Vc.

Pno.

Violin (Vln.) part: Continuous eighth-note pattern in the treble clef, starting on G4 and moving up stepwise.

Viola (Vc.) part: Sustained low notes in the bass clef, starting on G2 and moving up stepwise.

Piano (Pno.) part: Sequence of eighth and quarter notes in the treble clef, starting on G4 and moving up stepwise.

64

Vln.

Vc.

Pno.

Violin (Vln.) part: Sustained note in the treble clef, starting on G4 and moving up stepwise.

Viola (Vc.) part: Sustained low notes in the bass clef, starting on G2 and moving up stepwise.

Piano (Pno.) part: Sustained note in the treble clef, starting on G4 and moving up stepwise.