

# **Moonlight Parade (2)**

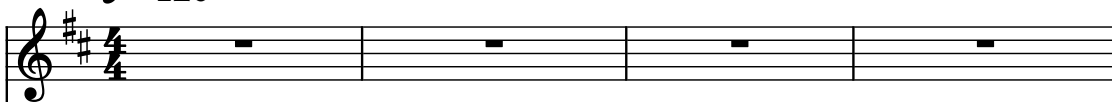
Composer: Yasunori Mitsuda

Game: Chrono Trigger

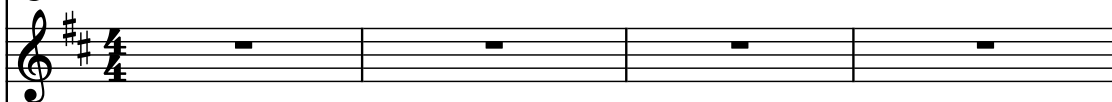
[pianogame.org](http://pianogame.org)

♩ = 120

Harmonica, Staff-1



Pan Flute, Staff



Contrabass, Staff-2



17

Pn. Fl.

Cb.

20

Pn. Fl.

Cb.

23

Pn. Fl.

Cb.

26

Pn. Fl.

Cb.

30

Pn. Fl.

Cb.

35

Pn. Fl.

Cb.

40

Pn. Fl.

Cb.

43

Pn. Fl.

Cb.

46

Pn. Fl.

Cb.

49

49

Pn. Fl.

Cb.

Measures 49-51: Flute and Clarinet play a melodic line with eighth and sixteenth notes. The Piano provides a steady eighth-note accompaniment.

52

52

Pn. Fl.

Cb.

Measures 52-54: Flute and Clarinet continue their melodic lines. The Piano continues with eighth-note accompaniment.

55

55

Pn. Fl.

Cb.

Measures 55-57: Flute and Clarinet continue their melodic lines. The Piano continues with eighth-note accompaniment.

58

58

Pn. Fl.

Cb.

Measures 58-60: Flute and Clarinet continue their melodic lines. The Piano continues with eighth-note accompaniment.

61

Pn. Fl.

Cb.

3

65

Pn. Fl.

Cb.

70

Pn. Fl.

Cb.

75

Pn. Fl.

Cb.

78

Pn. Fl.

Cb.

81

Pn. Fl.

Cb.

84

Pn. Fl.

Cb.

87

Pn. Fl.

Cb.

90

Pn. Fl.

Cb.

93

Pn. Fl.

Cb.

3

96

Pn. Fl.

Cb.

3

100

Pn. Fl.

Cb.

3

105

Pn. Fl.

Cb.

3



110

Pn. Fl.

Cb.

Measures 110-112. The Flute part has rests in measures 110 and 111, and a melodic line in measure 112. The Clarinet part has a continuous eighth-note pattern. The Bassoon part has a continuous eighth-note pattern.

113

Pn. Fl.

Cb.

Measures 113-115. The Flute part has a melodic line in measure 113, rests in measures 114 and 115. The Clarinet part has a continuous eighth-note pattern. The Bassoon part has a continuous eighth-note pattern.

116

Pn. Fl.

Cb.

Measures 116-118. The Flute part has a melodic line in measure 116, rests in measures 117 and 118. The Clarinet part has a continuous eighth-note pattern. The Bassoon part has a continuous eighth-note pattern.

119

Pn. Fl.

Cb.

Measures 119-121. The Flute part has a melodic line in measure 119, rests in measures 120 and 121. The Clarinet part has a continuous eighth-note pattern. The Bassoon part has a continuous eighth-note pattern.

122

Pn. Fl.

Cb.

Measures 122-124. The Flute part has a melodic line in measure 122, rests in measures 123 and 124. The Clarinet part has a continuous eighth-note pattern. The Bassoon part has a continuous eighth-note pattern.

125

Pn. Fl.

Cb.

128

Pn. Fl.

Cb.

131

Pn. Fl.

Cb.

135

Pn. Fl.

Cb.

140

Pn. Fl.

Cb.

Measures 140-144. The Flute part (Pn. Fl.) has whole rests. The Cello part (Cb.) has a melodic line with eighth and sixteenth notes.

145

Pn. Fl.

Cb.

Measures 145-147. The Flute part (Pn. Fl.) has a melodic line with eighth notes and slurs. The Cello part (Cb.) has a steady eighth-note accompaniment.

148

Pn. Fl.

Cb.

Measures 148-150. The Flute part (Pn. Fl.) has a melodic line with eighth notes and slurs. The Cello part (Cb.) has a steady eighth-note accompaniment.

151

Pn. Fl.

Cb.

Measures 151-153. The Flute part (Pn. Fl.) has a melodic line with eighth notes and slurs. The Cello part (Cb.) has a steady eighth-note accompaniment.

154

Pn. Fl.

Cb.

Measures 154-156. The Flute part (Pn. Fl.) has a melodic line with eighth notes and slurs. The Cello part (Cb.) has a steady eighth-note accompaniment.

157

Pn. Fl.

Cb.



160

Pn. Fl.

Cb.



163

Pn. Fl.

Cb.



166

Pn. Fl.

Cb.



170

Three staves of music. The top staff (Treble clef) contains chords of D#4, E#4, and F#4, with the F#4 chord moving to G#4 in the second measure. The middle staff (Pn. Fl., Treble clef) has a whole rest in the first measure, followed by whole rests in measures 2-5. The bottom staff (Cb., Bass clef) has a whole rest in the first measure, followed by eighth-note patterns in measures 2-3, and a half-note pattern in measures 4-5.

Pn. Fl.

Cb.

175

Three staves of music. The top two staves (Treble clef) contain whole rests for measures 175-178. The bottom staff (Cb., Bass clef) contains eighth-note patterns in measures 175-176, a half-note pattern in measure 177, and a quarter-note pattern in measure 178.

Pn. Fl.

Cb.

179

Three staves of music. The top two staves (Treble clef) contain whole rests for measures 179-182. The bottom staff (Cb., Bass clef) contains a half-note pattern in measure 179, a quarter rest in measure 180, and a half-note pattern in measure 181, followed by a double bar line in measure 182.

Pn. Fl.

Cb.