

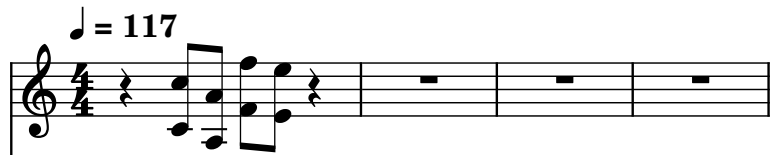
Conversation: Quick

Composer: Andrew Sega

Game: Traffic Department 2192

pianogame.org

Harp, (Original-style)



Fretless Electric Bass, Sequenced by MaliceX



Alto Kalimba, (C) 2002, 2004 MaliceX/TCMiDiS

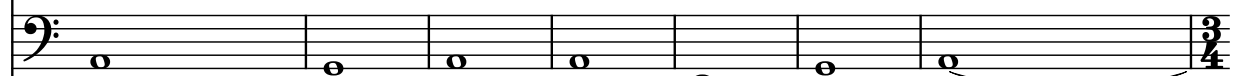


5

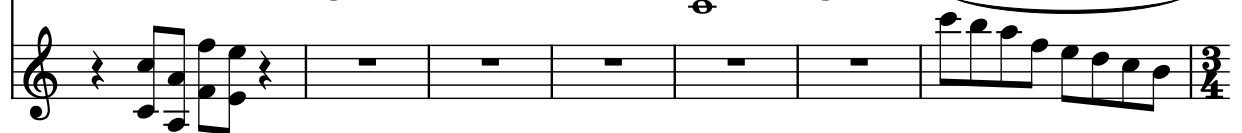
Hrp.



Frtl. El. B.



A. Kal.

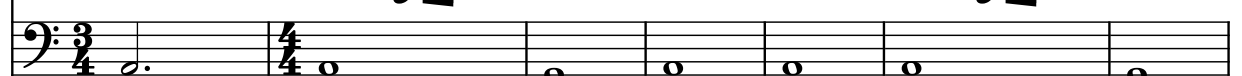


12

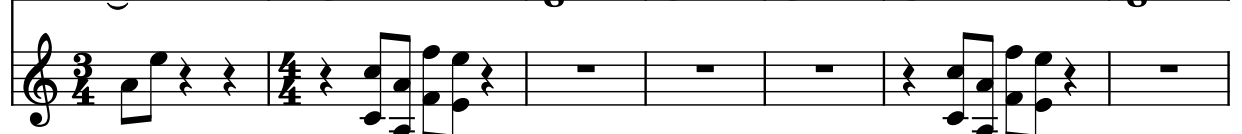
Hrp.



Frtl. El. B.



A. Kal.

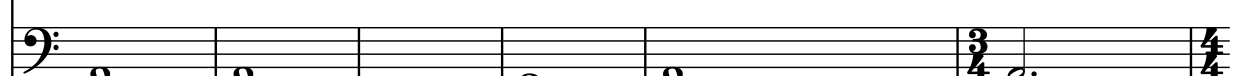


19

Hrp.



Frtl. El. B.



A. Kal.

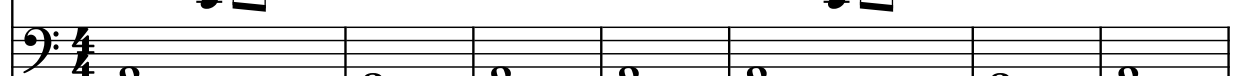


25

Hrp.



Frtl. El. B.



A. Kal.



32

Hrp.

Frtl. El. B.

A. Kal.

Measures 32-37. The Harp (Hrp.) part has rests for measures 32-34, followed by a melodic line in 3/4 and 4/4 time. The Fretless Electric Bass (Frtl. El. B.) part has a single note in measure 32, a half note in 32, a half note in 34, and a half note in 36, with a slur over measures 35-37. The Acoustic Keyboard (A. Kal.) part has rests for measures 32-34, followed by a melodic line in 3/4 and 4/4 time.

38

Hrp.

Frtl. El. B.

A. Kal.

Measures 38-45. The Harp (Hrp.) part has rests for measures 38-40, followed by a melodic line in 3/4 and 4/4 time. The Fretless Electric Bass (Frtl. El. B.) part has a single note in measure 38, a half note in 38, a half note in 40, and a half note in 42, with a slur over measures 41-45. The Acoustic Keyboard (A. Kal.) part has rests for measures 38-40, followed by a melodic line in 3/4 and 4/4 time.

46

Hrp.

Frtl. El. B.

A. Kal.

Measures 46-49. The Harp (Hrp.) part has rests for measures 46-47, followed by a melodic line in 3/4 and 4/4 time. The Fretless Electric Bass (Frtl. El. B.) part has a single note in measure 46, a half note in 46, and a half note in 48, with a slur over measures 47-49. The Acoustic Keyboard (A. Kal.) part has rests for measures 46-47, followed by a melodic line in 3/4 and 4/4 time.