

Stage 4 Boss

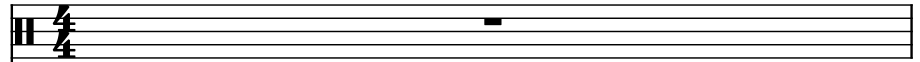
Composer: Konami Kukeiha Club

Game: Gokujyo Parodius (Japan)

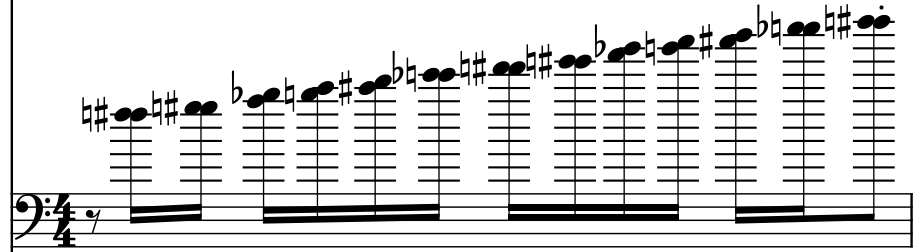
pianogame.org

♩ = 136

Large Drum Kit, Percussion



Bass Guitar, from Gokujiyo Parodius

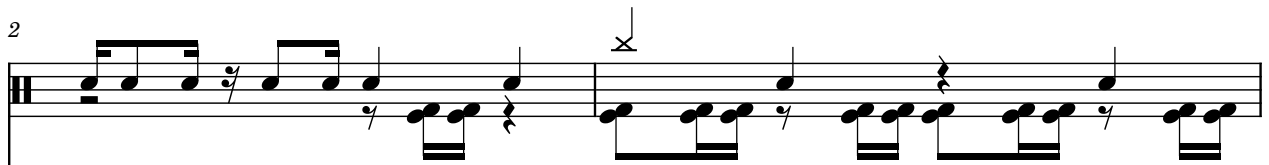


Violins (section), sequenced by



2

D. Kit



B. Guit.

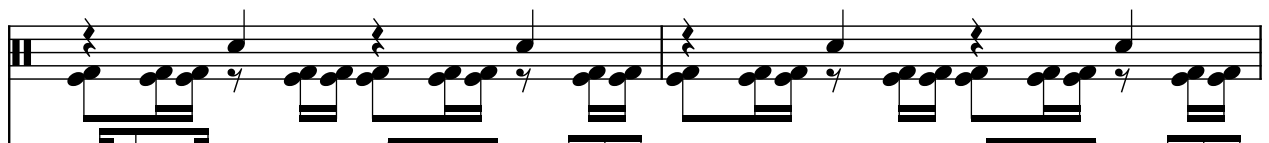


Vlns.



4

D. Kit



B. Guit.

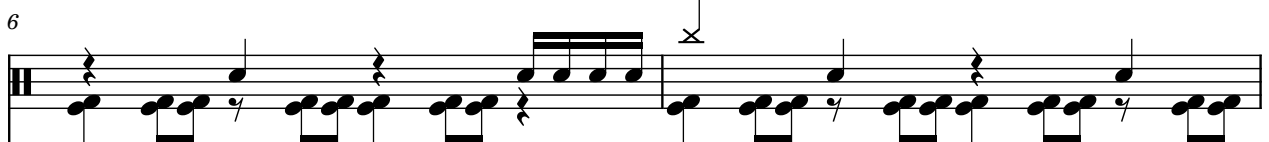


Vlns.



6

D. Kit



B. Guit.



Vlns.



8

D. Kit

B. Guit.

Vlns.

10

D. Kit

B. Guit.

Vlns.

12

D. Kit

B. Guit.

Vlns.

14

D. Kit

B. Guit.

Vlns.

16

D. Kit

B. Guit.

Vlns.

Measures 16-17. The D. Kit part features a steady eighth-note pattern. The B. Guit. part has a similar eighth-note pattern with occasional rests. The Vlns. part plays a continuous eighth-note line.

18

D. Kit

B. Guit.

Vlns.

Measures 18-19. The D. Kit part has a more complex pattern with some rests. The B. Guit. part continues with eighth notes. The Vlns. part has a continuous eighth-note line.

20

D. Kit

B. Guit.

Vlns.

Measures 20-21. The D. Kit part returns to a steady eighth-note pattern. The B. Guit. part continues with eighth notes. The Vlns. part has a continuous eighth-note line.

22

D. Kit

B. Guit.

Vlns.

Measures 22-23. The D. Kit part has a more complex pattern with some rests. The B. Guit. part continues with eighth notes. The Vlns. part has a continuous eighth-note line.

24

D. Kit

B. Guit.

Vlns.

26

D. Kit

B. Guit.

Vlns.

28

D. Kit

B. Guit.

Vlns.

30

D. Kit

B. Guit.

Vlns.

32

D. Kit

B. Guit.

Vlns.

Measures 32-33. The D. Kit part features a repeating eighth-note pattern. The B. Guit. part has a steady eighth-note accompaniment. The Vlns. part plays a continuous eighth-note line.

34

D. Kit

B. Guit.

Vlns.

Measures 34-35. Measure 34 includes a cymbal crash (X) over the D. Kit part. The Vlns. part has a flat (b) on the first note of measure 34.

36

D. Kit

B. Guit.

Vlns.

Measures 36-37. This system continues the patterns established in the previous measures.

38

D. Kit

B. Guit.

Vlns.

Measures 38-39. The system concludes with double bar lines at the end of each staff.