

Blue Water Blue Sky

Composer: Daisuke Ishiwatari

Game: Guilty Gear X

pianogame.org

♩ = 200

Carillon, Track 2

Pedal Steel Guitar, Track 3

Pad Synthesizer, Track 4

Measures 1-4 of the musical score. The Carillon (Track 2) and Pedal Steel Guitar (Track 3) both play a melody in treble clef, 4/4 time, key of D major. The Pad Synthesizer (Track 4) plays a melody in treble clef, 4/4 time, key of D major. The bottom staff of Track 4 is empty.

5

Car.

Ped. St. Guit.

Synth.

Measures 5-7 of the musical score. The Carillon (Track 2) and Pedal Steel Guitar (Track 3) both play a melody in treble clef, 4/4 time, key of D major. The Pad Synthesizer (Track 4) plays a melody in treble clef, 4/4 time, key of D major. The bottom staff of Track 4 is empty.

8

Car.

Ped. St. Guit.

Synth.

Measures 8-10 of the musical score. The Carillon (Track 2) and Pedal Steel Guitar (Track 3) both play a melody in treble clef, 4/4 time, key of D major. The Pad Synthesizer (Track 4) plays a melody in treble clef, 4/4 time, key of D major. The bottom staff of Track 4 is empty.

11

Car.

Ped. St. Guit.

Synth.

Measures 11-13. The Car. part features a continuous eighth-note melody. The Ped. St. Guit. part has a rhythmic pattern of eighth notes. The Synth. part has a melody in the right hand and rests in the left hand.

14

Car.

Ped. St. Guit.

Synth.

Measures 14-16. The Car. part continues with eighth notes. The Ped. St. Guit. part continues with eighth notes. The Synth. part continues with a melody in the right hand and rests in the left hand.

17

Car.

Ped. St. Guit.

Synth.

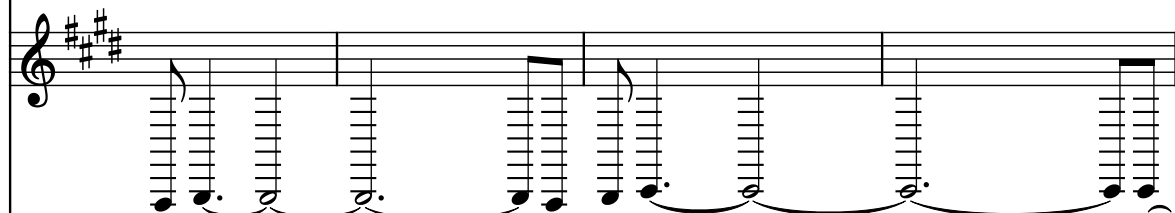
Measures 17-20. The Car. part has a long note with a tremolo effect in measure 17, followed by rests. The Ped. St. Guit. part continues with eighth notes. The Synth. part has a melody in the right hand and rests in the left hand.

21

Car.



Ped. St. Guit.



Synth.

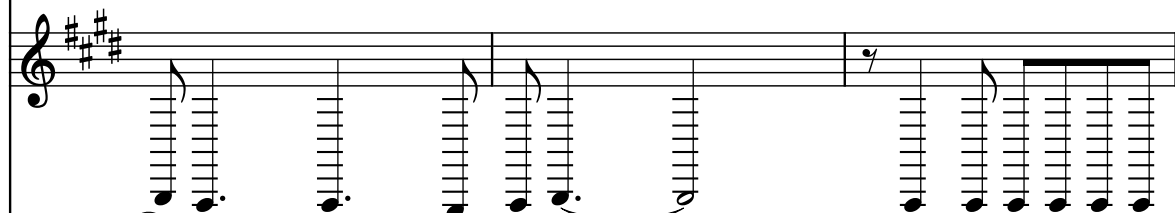


25

Car.



Ped. St. Guit.



Synth.

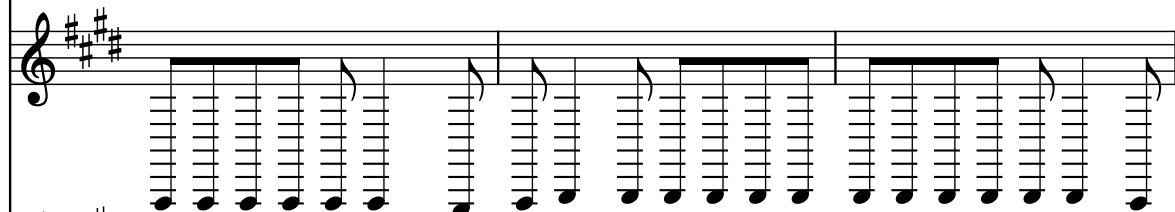


28

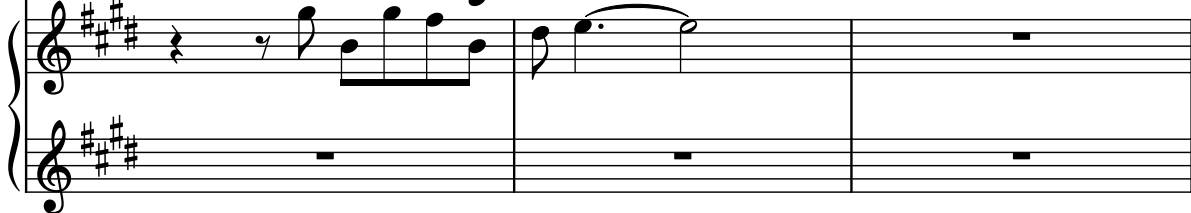
Car.



Ped. St. Guit.



Synth.



31

Car.

Ped. St. Guit.

Synth.

Measures 31-33. The Car. part has a melody in treble clef with a key signature of three sharps. The Ped. St. Guit. part has a continuous eighth-note accompaniment in treble clef. The Synth. part has a melody in treble clef and rests in the bass clef.

34

Car.

Ped. St. Guit.

Synth.

Measures 34-36. The Car. part has a melody in treble clef with a key signature of three sharps. The Ped. St. Guit. part has a continuous eighth-note accompaniment in treble clef. The Synth. part has a melody in treble clef and rests in the bass clef.

37

Car.

Ped. St. Guit.

Synth.

Measures 37-39. The Car. part has rests in treble clef. The Ped. St. Guit. part has a continuous eighth-note accompaniment in treble clef. The Synth. part has rests in both treble and bass clefs.

40

Car.

Ped. St. Guit.

Synth.

Measures 40-43. The Car. part has whole rests. The Ped. St. Guit. part has a continuous eighth-note pattern. The Synth. part has whole rests.

44

Car.

Ped. St. Guit.

Synth.

Measures 44-47. The Car. part has a melody. The Ped. St. Guit. part has a continuous eighth-note pattern. The Synth. part has a melody.

48

Car.

Ped. St. Guit.

Synth.

Measures 48-51. The Car. part has a melody. The Ped. St. Guit. part has a continuous eighth-note pattern. The Synth. part has a melody.

51

Car.

Ped. St. Guit.

Synth.

Measures 51-53. The Car. part features a melody in treble clef with a key signature of three sharps. The Ped. St. Guit. part features a complex rhythmic pattern in treble clef. The Synth. part features a bass line in treble clef and a sustained note in the bass clef.

54

Car.

Ped. St. Guit.

Synth.

Measures 54-56. The Car. part continues the melody. The Ped. St. Guit. part continues the complex rhythmic pattern. The Synth. part continues the bass line and sustained note.

57

Car.

Ped. St. Guit.

Synth.

Measures 57-59. The Car. part continues the melody. The Ped. St. Guit. part continues the complex rhythmic pattern. The Synth. part continues the bass line and sustained note.

60

Car.

Ped. St. Guit.

Synth.

63

Car.

Ped. St. Guit.

Synth.

66

Car.

Ped. St. Guit.

Synth.

69

Car.

Ped. St. Guit.

Synth.

72

Car.

Ped. St. Guit.

Synth.

75

Car.

Ped. St. Guit.

Synth.

79

Car.

Ped. St. Guit.

Synth.

Measures 79-82. The Car. part has a melodic line with a half note, a quarter note, and a half note. The Ped. St. Guit. part has a rhythmic pattern of eighth notes. The Synth. part has a melodic line with a half note, a quarter note, and a half note.

83

Car.

Ped. St. Guit.

Synth.

Measures 83-85. The Car. part has a melodic line with a half note, a quarter note, and a half note. The Ped. St. Guit. part has a rhythmic pattern of eighth notes. The Synth. part has a melodic line with a half note, a quarter note, and a half note.

86

Car.

Ped. St. Guit.

Synth.

Measures 86-88. The Car. part has a melodic line with a half note, a quarter note, and a half note. The Ped. St. Guit. part has a rhythmic pattern of eighth notes. The Synth. part has a melodic line with a half note, a quarter note, and a half note.

89

Car.

Ped. St. Guit.

Synth.

Measures 89-91. The Car. part features a melodic line starting with a quarter rest, followed by eighth and quarter notes, ending with a half note tied to the next system. The Ped. St. Guit. part provides a continuous eighth-note accompaniment. The Synth. part has a melodic line in the right hand, starting with a quarter rest, and rests in the left hand.

92

Car.

Ped. St. Guit.

Synth.

Measures 92-94. The Car. part features a melodic line. The Ped. St. Guit. part provides a continuous eighth-note accompaniment. The Synth. part has a melodic line in the right hand and rests in the left hand.

95

Car.

Ped. St. Guit.

Synth.

Measures 95-97. The Car. part has rests. The Ped. St. Guit. part provides a continuous eighth-note accompaniment. The Synth. part has rests in both hands.

98

Car.

Ped. St. Guit.

Synth.

Measures 98-101. The Car. part has whole rests. The Ped. St. Guit. part has a continuous eighth-note pattern. The Synth. part has whole rests.

102

Car.

Ped. St. Guit.

Synth.

Measures 102-105. The Car. part has a melodic line. The Ped. St. Guit. part has a continuous eighth-note pattern. The Synth. part has a melodic line.

106

Car.

Ped. St. Guit.

Synth.

Measures 106-109. The Car. part has a melodic line. The Ped. St. Guit. part has a continuous eighth-note pattern. The Synth. part has a melodic line.

109

Car.

Ped. St. Guit.

Synth.

Measures 109-111. The Car. part features a melodic line with eighth and sixteenth notes. The Ped. St. Guit. part has a dense, rhythmic pattern of sixteenth notes. The Synth. part consists of a simple bass line with eighth notes and rests.

112

Car.

Ped. St. Guit.

Synth.

Measures 112-114. The Car. part continues the melodic line. The Ped. St. Guit. part maintains the dense sixteenth-note pattern. The Synth. part continues the bass line with eighth notes and rests.

115

Car.

Ped. St. Guit.

Synth.

Measures 115-117. The Car. part continues the melodic line. The Ped. St. Guit. part maintains the dense sixteenth-note pattern. The Synth. part continues the bass line with eighth notes and rests.

118

Car.

Ped. St. Guit.

Synth.

Measures 118-120. The Car. part features a melodic line with eighth and sixteenth notes. The Ped. St. Guit. part has a rhythmic pattern of eighth notes. The Synth. part has a melodic line in the right hand and rests in the left hand.

121

Car.

Ped. St. Guit.

Synth.

Measures 121-123. The Car. part continues with a melodic line. The Ped. St. Guit. part has a rhythmic pattern of eighth notes. The Synth. part has a melodic line in the right hand and rests in the left hand.

124

Car.

Ped. St. Guit.

Synth.

Measures 124-126. The Car. part features a melodic line with a large chordal structure. The Ped. St. Guit. part has a rhythmic pattern of eighth notes. The Synth. part has a melodic line in the right hand and rests in the left hand.

127

Car.

Ped. St. Guit.

Synth.

130

Car.

Ped. St. Guit.

Synth.

133

Car.

Ped. St. Guit.

Synth.