

Main Theme (v2)

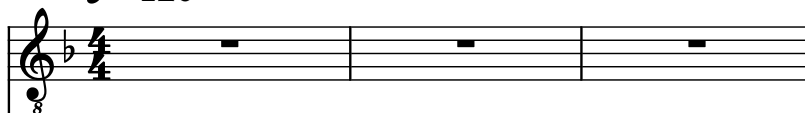
Composer: Koji Kondo

Game: Super Mario 3D World

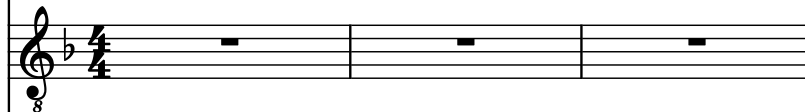
pianogame.org

♩ = 120

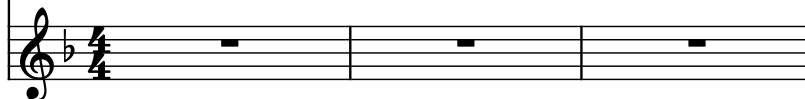
Electric Guitar, Jazz Guitar by Jonas Evant



Electric Guitar, Clean Guitar



Clavichord, Clavi



4

El. Guit.

El. Guit.

Cch.

Detailed description: This system contains measures 4, 5, and 6. The first staff (labeled 'El. Guit.') has a treble clef, key signature of two flats, and an octave sign (8). Measure 4 starts with a quarter rest, followed by eighth-note chords (F4-A4, G4-Bb4, A4-C5) and a dotted quarter note chord (F4-A4, G4-Bb4). Measure 5 has a quarter rest, followed by eighth-note chords (F4-A4, G4-Bb4, A4-C5) and a dotted quarter note chord (F4-A4, G4-Bb4). Measure 6 has a quarter rest, followed by eighth-note chords (F4-A4, G4-Bb4, A4-C5) and a dotted quarter note chord (F4-A4, G4-Bb4). The second and third staves (labeled 'El. Guit.' and 'Cch.') each contain three measures of whole rests.

7

El. Guit.

El. Guit.

Cch.

Detailed description: This system contains measures 7, 8, and 9. The first staff (labeled 'El. Guit.') has a treble clef, key signature of two flats, and an octave sign (8). Measure 7 starts with a quarter rest, followed by eighth-note chords (F4-A4, G4-Bb4, A4-C5) and a dotted quarter note chord (F4-A4, G4-Bb4). Measure 8 has a quarter rest, followed by eighth-note chords (F4-A4, G4-Bb4, A4-C5) and a dotted quarter note chord (F4-A4, G4-Bb4). Measure 9 has a quarter rest, followed by eighth-note chords (F4-A4, G4-Bb4, A4-C5) and a dotted quarter note chord (F4-A4, G4-Bb4). The second and third staves (labeled 'El. Guit.' and 'Cch.') each contain three measures of whole rests.

10

El. Guit.

El. Guit.

Cch.

Detailed description: This system contains measures 10, 11, and 12. The first staff (labeled 'El. Guit.') has a treble clef, key signature of two flats, and an octave sign (8). Measure 10 starts with a quarter rest, followed by eighth-note chords (F4-A4, G4-Bb4, A4-C5) and a dotted quarter note chord (F4-A4, G4-Bb4). Measure 11 has a quarter rest, followed by eighth-note chords (F4-A4, G4-Bb4, A4-C5) and a dotted quarter note chord (F4-A4, G4-Bb4). Measure 12 has a quarter rest, followed by eighth-note chords (F4-A4, G4-Bb4, A4-C5) and a dotted quarter note chord (F4-A4, G4-Bb4). The second and third staves (labeled 'El. Guit.' and 'Cch.') each contain three measures of whole rests.

13

El. Guit.

El. Guit.

Cch.

16

El. Guit.

El. Guit.

Cch.

19

El. Guit.

El. Guit.

Cch.

22

El. Guit.

El. Guit.

Cch.

25

El. Guit.

El. Guit.

Cch.

28

El. Guit.

El. Guit.

Cch.

31

El. Guit.

El. Guit.

Cch.

35

El. Guit.

El. Guit.

Cch.

41

El. Guit.

El. Guit.

Cch.

44

El. Guit.

El. Guit.

Cch.

47

El. Guit.

El. Guit.

Cch.

50

El. Guit.

El. Guit.

Cch.

53

El. Guit.

El. Guit.

Cch.




56

El. Guit.

El. Guit.

Cch.



59

El. Guit.

El. Guit.

Cch.



62

El. Guit.

El. Guit.

Cch.



65

El. Guit.

El. Guit.

Cch.

68

El. Guit.

El. Guit.

Cch.

72

El. Guit.

El. Guit.

Cch.