

Touch Fuzzy, Get Dizzy

Composer: Koji Kondo

Game: Super Mario World 2: Yoshi's Island

pianogame.org

$\text{♩} = 170$

Harmonica, Harmonica



Tin Whistle, Whistle



Percussive Organ, Organ



4

Bb Tin Wh.



Perc. Org.

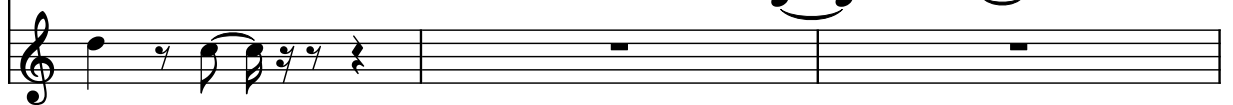


8

Bb Tin Wh.



Perc. Org.



11

Bb Tin Wh.



Perc. Org.



14

Bb Tin Wh.

Perc. Org.

This system contains measures 14, 15, and 16. The top staff has a treble clef and a key signature of one flat. Measure 14 contains eighth notes G4, A4, Bb4, C5, D5, and E5, followed by a quarter rest. Measure 15 contains eighth notes F5, E5, D5, C5, Bb4, and A4, followed by a quarter rest. Measure 16 contains eighth notes G4, F4, E4, D4, C4, and Bb3, followed by a quarter rest. The middle staff, labeled 'Bb Tin Wh.', has a treble clef and a key signature of one flat. Measure 14 contains eighth notes G4, A4, Bb4, C5, D5, and E5, followed by a quarter rest. Measure 15 contains eighth notes F5, E5, D5, C5, Bb4, and A4, followed by a quarter rest. Measure 16 contains eighth notes G4, F4, E4, D4, C4, and Bb3, followed by a quarter rest. The bottom staff, labeled 'Perc. Org.', has a treble clef and a key signature of one flat. It contains three measures of whole rests.

17

Bb Tin Wh.

Perc. Org.

This system contains measures 17, 18, 19, and 20. The top staff has a treble clef and a key signature of one flat. Measure 17 contains eighth notes G4, A4, Bb4, C5, D5, and E5, followed by a quarter rest. Measure 18 contains eighth notes F5, E5, D5, C5, Bb4, and A4, followed by a quarter rest. Measure 19 contains eighth notes G4, F4, E4, D4, C4, and Bb3, followed by a quarter rest. Measure 20 contains eighth notes G4, A4, Bb4, C5, D5, and E5, followed by a quarter rest. The middle staff, labeled 'Bb Tin Wh.', has a treble clef and a key signature of one flat. Measure 17 contains eighth notes G4, A4, Bb4, C5, D5, and E5, followed by a quarter rest. Measure 18 contains eighth notes F5, E5, D5, C5, Bb4, and A4, followed by a quarter rest. Measure 19 contains eighth notes G4, F4, E4, D4, C4, and Bb3, followed by a quarter rest. Measure 20 contains eighth notes G4, A4, Bb4, C5, D5, and E5, followed by a quarter rest. The bottom staff, labeled 'Perc. Org.', has a treble clef and a key signature of one flat. It contains four measures of whole rests.

21

Bb Tin Wh.

Perc. Org.

This system contains measures 21, 22, and 23. The top staff has a treble clef and a key signature of one flat. Measure 21 contains eighth notes G4, A4, Bb4, C5, D5, and E5, followed by a quarter rest. Measure 22 contains eighth notes F5, E5, D5, C5, Bb4, and A4, followed by a quarter rest. Measure 23 contains eighth notes G4, F4, E4, D4, C4, and Bb3, followed by a quarter rest. The middle staff, labeled 'Bb Tin Wh.', has a treble clef and a key signature of one flat. Measure 21 contains eighth notes G4, A4, Bb4, C5, D5, and E5, followed by a quarter rest. Measure 22 contains eighth notes F5, E5, D5, C5, Bb4, and A4, followed by a quarter rest. Measure 23 contains eighth notes G4, F4, E4, D4, C4, and Bb3, followed by a quarter rest. The bottom staff, labeled 'Perc. Org.', has a treble clef and a key signature of one flat. It contains three measures of whole rests.