

# **Egypt Phase 1**

Composer: Tamayo Kawamoto

Game: Forgotten Worlds

[pianogame.org](http://pianogame.org)

♩ = 115

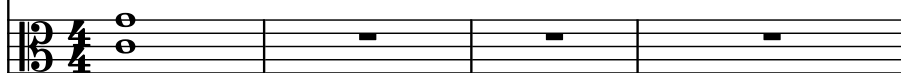
Vibraphone, Vibraphone/Marimba



Fretless Electric Bass, Fretless Bass



Violas (section), StringInstrument



5



Frtl. El. B.



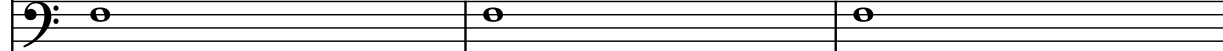
Vlas.



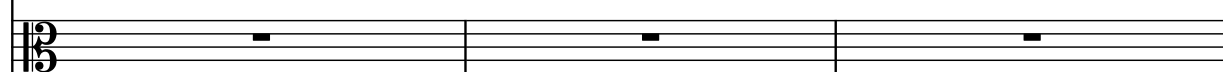
8



Frtl. El. B.



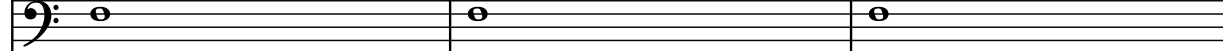
Vlas.



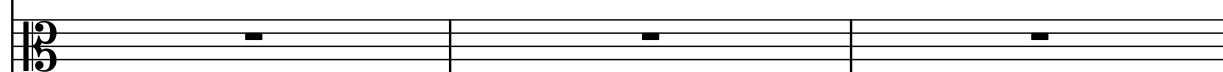
11



Frtl. El. B.



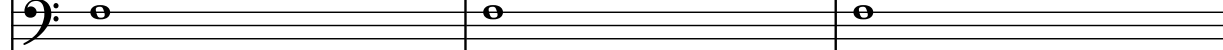
Vlas.



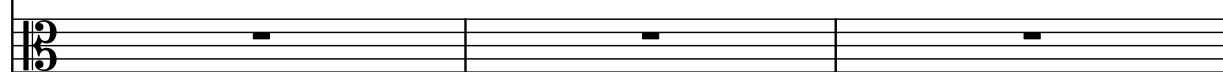
14



Frtl. El. B.



Vlas.



17

Vib.

Frtrl. El. B.

Vlas.



20

Vib.

Frtrl. El. B.

Vlas.

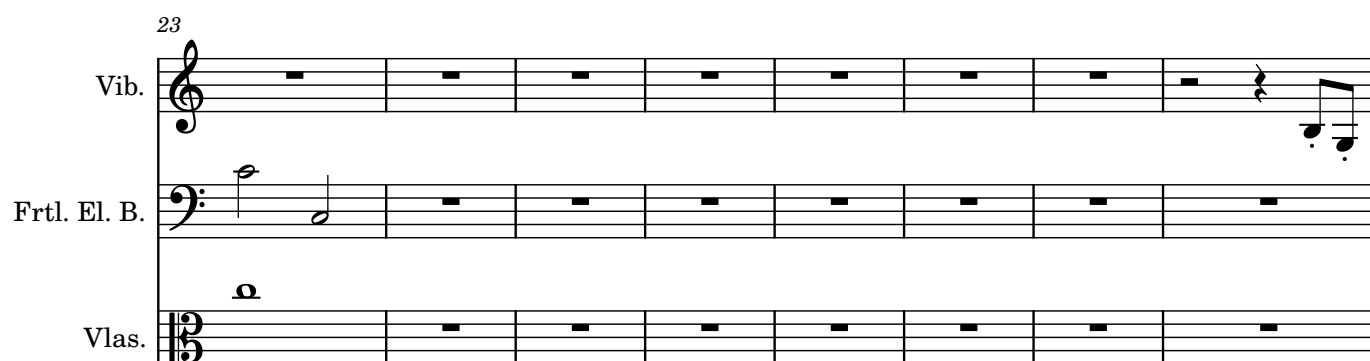


23

Vib.

Frtrl. El. B.

Vlas.



31

Vib.

Frtrl. El. B.

Vlas.



34

Vib.

Frtl. El. B.

Vlas.

Detailed description: The image shows a musical score for three parts: Vib., Frtl. El. B., and Vlas. The Vib. part is in treble clef and contains eighth-note patterns with various accidentals (sharps, naturals, flats). The Frtl. El. B. part is in bass clef and contains whole notes. The Vlas. part is in bass clef and contains whole rests. The measures are numbered 34, 35, and 36.

37

Vib.

Frtl. El. B.

Vlas.

The musical score for measures 37-39 consists of three staves. The top staff, labeled 'Vib.', is in treble clef and contains eighth and sixteenth notes with various accidentals. The middle staff, labeled 'Frtl. El. B.', is in bass clef and contains whole notes. The bottom staff, labeled 'Vlas.', is in bass clef and contains whole rests.

40

Vib.

Frtl. El. B.

Vlas.

Measure 40: Vib. (G4, A4, B4, C5, B4, A4, G4), Frtl. El. B. (G2), Vlas. (rest).  
Measure 41: Vib. (F#4, G4, A4, B4, A4, G4, F#4), Frtl. El. B. (A2), Vlas. (rest).  
Measure 42: Vib. (G4, A4, B4, C5, B4, A4, G4), Frtl. El. B. (G2), Vlas. (rest).

43

Vib.

Frtl. El. B.

Vlas.

Measure 43: Vib. plays a melodic line starting on G4, moving up stepwise to A4, then down to G4, F#4, E4, D4, C4, B3, A3, G3, F#3, E3, D3, C3, B2, A2, G2, F#2, E2, D2, C2, B1, A1, G1, F#1, E1, D1, C1, B0, A0, G0, F#0, E0, D0, C0, B-1, A-1, G-1, F#-1, E-1, D-1, C-1, B-2, A-2, G-2, F#-2, E-2, D-2, C-2, B-3, A-3, G-3, F#-3, E-3, D-3, C-3, B-4, A-4, G-4, F#-4, E-4, D-4, C-4, B-5, A-5, G-5, F#-5, E-5, D-5, C-5, B-6, A-6, G-6, F#-6, E-6, D-6, C-6, B-7, A-7, G-7, F#-7, E-7, D-7, C-7, B-8, A-8, G-8, F#-8, E-8, D-8, C-8, B-9, A-9, G-9, F#-9, E-9, D-9, C-9, B-10, A-10, G-10, F#-10, E-10, D-10, C-10, B-11, A-11, G-11, F#-11, E-11, D-11, C-11, B-12, A-12, G-12, F#-12, E-12, D-12, C-12, B-13, A-13, G-13, F#-13, E-13, D-13, C-13, B-14, A-14, G-14, F#-14, E-14, D-14, C-14, B-15, A-15, G-15, F#-15, E-15, D-15, C-15, B-16, A-16, G-16, F#-16, E-16, D-16, C-16, B-17, A-17, G-17, F#-17, E-17, D-17, C-17, B-18, A-18, G-18, F#-18, E-18, D-18, C-18, B-19, A-19, G-19, F#-19, E-19, D-19, C-19, B-20, A-20, G-20, F#-20, E-20, D-20, C-20, B-21, A-21, G-21, F#-21, E-21, D-21, C-21, B-22, A-22, G-22, F#-22, E-22, D-22, C-22, B-23, A-23, G-23, F#-23, E-23, D-23, C-23, B-24, A-24, G-24, F#-24, E-24, D-24, C-24, B-25, A-25, G-25, F#-25, E-25, D-25, C-25, B-26, A-26, G-26, F#-26, E-26, D-26, C-26, B-27, A-27, G-27, F#-27, E-27, D-27, C-27, B-28, A-28, G-28, F#-28, E-28, D-28, C-28, B-29, A-29, G-29, F#-29, E-29, D-29, C-29, B-30, A-30, G-30, F#-30, E-30, D-30, C-30, B-31, A-31, G-31, F#-31, E-31, D-31, C-31, B-32, A-32, G-32, F#-32, E-32, D-32, C-32, B-33, A-33, G-33, F#-33, E-33, D-33, C-33, B-34, A-34, G-34, F#-34, E-34, D-34, C-34, B-35, A-35, G-35, F#-35, E-35, D-35, C-35, B-36, A-36, G-36, F#-36, E-36, D-36, C-36, B-37, A-37, G-37, F#-37, E-37, D-37, C-37, B-38, A-38, G-38, F#-38, E-38, D-38, C-38, B-39, A-39, G-39, F#-39, E-39, D-39, C-39, B-40, A-40, G-40, F#-40, E-40, D-40, C-40, B-41, A-41, G-41, F#-41, E-41, D-41, C-41, B-42, A-42, G-42, F#-42, E-42, D-42, C-42, B-43, A-43, G-43, F#-43, E-43, D-43, C-43, B-44, A-44, G-44, F#-44, E-44, D-44, C-44, B-45, A-45, G-45, F#-45, E-45, D-45, C-45, B-46, A-46, G-46, F#-46, E-46, D-46, C-46, B-47, A-47, G-47, F#-47, E-47, D-47, C-47, B-48, A-48, G-48, F#-48, E-48, D-48, C-48, B-49, A-49, G-49, F#-49, E-49, D-49, C-49, B-50, A-50, G-50, F#-50, E-50, D-50, C-50, B-51, A-51, G-51, F#-51, E-51, D-51, C-51, B-52, A-52, G-52, F#-52, E-52, D-52, C-52, B-53, A-53, G-53, F#-53, E-53, D-53, C-53, B-54, A-54, G-54, F#-54, E-54, D-54, C-54, B-55, A-55, G-55, F#-55, E-55, D-55, C-55, B-56, A-56, G-56, F#-56, E-56, D-56, C-56, B-57, A-57, G-57, F#-57, E-57, D-57, C-57, B-58, A-58, G-58, F#-58, E-58, D-58, C-58, B-59, A-59, G-59, F#-59, E-59, D-59, C-59, B-60, A-60, G-60, F#-60, E-60, D-60, C-60, B-61, A-61, G-61, F#-61, E-61, D-61, C-61, B-62, A-62, G-62, F#-62, E-62, D-62, C-62, B-63, A-63, G-63, F#-63, E-63, D-63, C-63, B-64, A-64, G-64, F#-64, E-64, D-64, C-64, B-65, A-65, G-65, F#-65, E-65, D-65, C-65, B-66, A-66, G-66, F#-66, E-66, D-66, C-66, B-67, A-67, G-67, F#-67, E-67, D-67, C-67, B-68, A-68, G-68, F#-68, E-68, D-68, C-68, B-69, A-69, G-69, F#-69, E-69, D-69, C-69, B-70, A-70, G-70, F#-70, E-70, D-70, C-70, B-71, A-71, G-71, F#-71, E-71, D-71, C-71, B-72, A-72, G-72, F#-72, E-72, D-72, C-72, B-73, A-73, G-73, F#-73, E-73, D-73, C-73, B-74, A-74, G-74, F#-74, E-74, D-74, C-74, B-75, A-75, G-75, F#-75, E-75, D-75, C-75, B-76, A-76, G-76, F#-76, E-76, D-76, C-76, B-77, A-77, G-77, F#-77, E-77, D-77, C-77, B-78, A-78, G-78, F#-78, E-78, D-78, C-78, B-79, A-79, G-79, F#-79, E-79, D-79, C-79, B-80, A-80, G-80, F#-80, E-80, D-80, C-80, B-81, A-81, G-81, F#-81, E-81, D-81, C-81, B-82, A-82, G-82, F#-82, E-82, D-82, C-82, B-83, A-83, G-83, F#-83, E-83, D-83, C-83, B-84, A-84, G-84, F#-84, E-84, D-84, C-84, B-85, A-85, G-85, F#-85, E-85, D-85, C-85, B-86, A-86, G-86, F#-86, E-86, D-86, C-86, B-87, A-87, G-87, F#-87, E-87, D-87, C-87, B-88, A-88, G-88, F#-88, E-88, D-88, C-88, B-89, A-89, G-89, F#-89, E-89, D-89, C-89, B-90, A-90, G-90, F#-90, E-90, D-90, C-90, B-91, A-91, G-91, F#-91, E-91, D-91, C-91, B-92, A-92, G-92, F#-92, E-92, D-92, C-92, B-93, A-93, G-93, F#-93, E-93, D-93, C-93, B-94, A-94, G-94, F#-94, E-94, D-94, C-94, B-95, A-95, G-95, F#-95, E-95, D-95, C-95, B-96, A-96, G-96, F#-96, E-96, D-96, C-96, B-97, A-97, G-97, F#-97, E-97, D-97, C-97, B-98, A-98, G-98, F#-98, E-98, D-98, C-98, B-99, A-99, G-99, F#-99, E-99, D-99, C-99, B-100, A-100, G-100, F#-100, E-100, D-100, C-100, B-101, A-101, G-101, F#-101, E-101, D-101, C-101, B-102, A-102, G-102, F#-102, E-102, D-102, C-102, B-103, A-103, G-103, F#-103, E-103, D-103, C-103, B-104, A-104, G-104, F#-104, E-104, D-104, C-104, B-105, A-105, G-105, F#-105, E-105, D-105, C-105, B-106, A-106, G-106, F#-106, E-106, D-106, C-106, B-107, A-107, G-107, F#-107,

46

Vib.

Frtrl. El. B.

Vlas.

Measures 46-48: Vib. is silent. Frtrl. El. B. and Vlas. play a triplet of eighth notes (F#, A, C) followed by a quarter note (D) in measures 46-48.

49

Vib.

Frtrl. El. B.

Vlas.

Measures 49-56: Vib. is silent. Frtrl. El. B. and Vlas. play a half note (F#) in measures 49-56.

57

Vib.

Frtrl. El. B.

Vlas.

Measures 57-58: Vib. plays a quarter note (F#) followed by an eighth rest, then a quarter note (A) followed by an eighth rest, then a quarter note (C) followed by an eighth rest, then a quarter note (D) followed by an eighth rest. Frtrl. El. B. and Vlas. play a quarter note (F#) followed by an eighth rest, then a quarter note (A) followed by an eighth rest, then a quarter note (C) followed by an eighth rest, then a quarter note (D) followed by an eighth rest.

59

Vib.

Frtrl. El. B.

Vlas.

Measures 59-60: Vib. plays a quarter note (F#) followed by an eighth rest, then a quarter note (A) followed by an eighth rest, then a quarter note (C) followed by an eighth rest, then a quarter note (D) followed by an eighth rest. Frtrl. El. B. and Vlas. play a quarter note (F#) followed by an eighth rest, then a quarter note (A) followed by an eighth rest, then a quarter note (C) followed by an eighth rest, then a quarter note (D) followed by an eighth rest.

61

Vib.

Frtl. El. B.

Vlas.

63

Vib.

Frtl. El. B.

Vlas.

65

Vib.

Frtl. El. B.

Vlas.

67

Vib.

Frtl. El. B.

Vlas.

69

Vib.

Frtrl. El. B.

Vlas.

71

Vib.

Frtrl. El. B.

Vlas.

74

Vib.

Frtrl. El. B.

Vlas.

80

Vib.

Frtrl. El. B.

Vlas.

83

Vib.

Frtrl. El. B.

Vlas.

86

Vib.

Frtrl. El. B.

Vlas.

Measures 86-88: Vib. part features a continuous eighth-note pattern. Frtrl. El. B. part has whole notes. Vlas. part has whole rests.

89

Vib.

Frtrl. El. B.

Vlas.

Measures 89-91: Vib. part features a continuous eighth-note pattern. Frtrl. El. B. part has whole notes. Vlas. part has whole rests.

92

Vib.

Frtrl. El. B.

Vlas.

Measures 92-94: Vib. part features a continuous eighth-note pattern. Frtrl. El. B. part has whole notes. Vlas. part has whole rests.

95

Vib.

Frtrl. El. B.

Vlas.

Measures 95-97: Vib. part has whole rests. Frtrl. El. B. and Vlas. parts have eighth-note patterns with triplets.



98

Vib.

Frtl. El. B.

Vlas.

106

Vib.

Frtl. El. B.

Vlas.

109

Vib.

Frtl. El. B.

Vlas.

112

Vib.

Frtl. El. B.

Vlas.

115

Vib.

Frtl. El. B.

Vlas.

118

Vib.

Frtrl. El. B.

Vlas.

Measures 118-120: Vib. plays a continuous eighth-note pattern. Frtrl. El. B. and Vlas. are silent.

121

Vib.

Frtrl. El. B.

Vlas.

Measures 121-123: Vib. is silent. Frtrl. El. B. and Vlas. play a melody with triplets.

124

Vib.

Frtrl. El. B.

Vlas.

Measures 124-131: Vib. is silent. Frtrl. El. B. and Vlas. play a melody.

132

Vib.

Frtrl. El. B.

Vlas.

Measures 132-134: Vib. plays a melody. Frtrl. El. B. and Vlas. are silent.

135

Vib.

Frtrl. El. B.

Vlas.

This system contains measures 135 and 136. The Vib. part is in treble clef with a key signature of one flat (B-flat). It features a repeating eighth-note pattern: G4, A4, B-flat4, G4, A4, B-flat4. The Frtrl. El. B. part is in bass clef and features a repeating eighth-note pattern: G3, A3, B-flat3, G3, A3, B-flat3. The Vlas. part is in bass clef and contains whole rests for both measures.

137

Vib.

Frtrl. El. B.

Vlas.

This system contains measures 137 and 138. The Vib. part continues with the same eighth-note pattern as in measure 135. The Frtrl. El. B. part continues with the same eighth-note pattern. The Vlas. part contains whole rests for both measures.

139

Vib.

Frtrl. El. B.

Vlas.

This system contains measures 139 and 140. The Vib. part continues with the same eighth-note pattern. The Frtrl. El. B. part continues with the same eighth-note pattern. The Vlas. part contains whole rests for both measures.

141

Vib.

Frtrl. El. B.

Vlas.

This system contains measures 141 and 142. The Vib. part continues with the same eighth-note pattern. The Frtrl. El. B. part continues with the same eighth-note pattern. The Vlas. part contains whole rests for both measures.

143

Vib.

Frtl. El. B.

Vlas.

Measures 143-144. Vib. (Vibraphone) has a melodic line with eighth notes and a flat. Frtl. El. B. (Fretless Electric Bass) has a rhythmic line with eighth notes. Vlas. (Vibraphone) has a sustained low note.

145

Vib.

Frtl. El. B.

Vlas.

Measures 145-146. Vib. (Vibraphone) has a melodic line with eighth notes and a flat. Frtl. El. B. (Fretless Electric Bass) has a rhythmic line with eighth notes. Vlas. (Vibraphone) has a sustained low note.

147

Vib.

Frtl. El. B.

Vlas.

Measures 147-149. Vib. (Vibraphone) has a melodic line with eighth notes and a flat. Frtl. El. B. (Fretless Electric Bass) has a rhythmic line with eighth notes. Vlas. (Vibraphone) has a sustained low note.

150

Vib.

Frtl. El. B.

Vlas.

Measures 150-152. Vib. (Vibraphone) has a sustained low note. Frtl. El. B. (Fretless Electric Bass) has a melodic line with eighth notes and a flat. Vlas. (Vibraphone) has a sustained low note.