

# Slap-Up

Composer: Norio Hanzawa

Game: Alien Soldier

[pianogame.org](http://pianogame.org)

♩ = 125

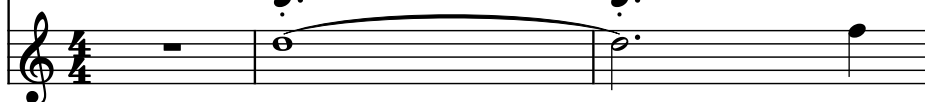
Bass Synthesizer, Alien Soldier



Bass Synthesizer, "Slap-Up"

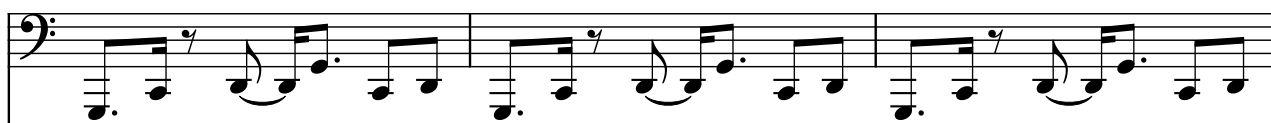


Crystal Synthesizer, GeckoYamori



4

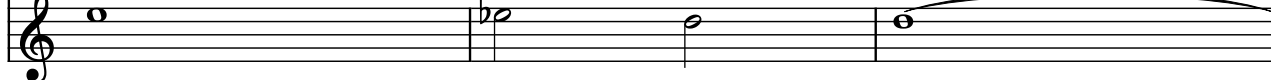
Synth.



Synth.



Synth.



7

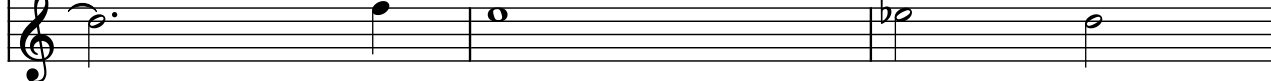
Synth.



Synth.



Synth.



10

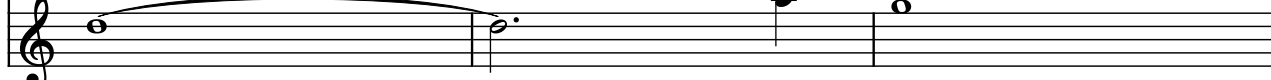
Synth.



Synth.



Synth.



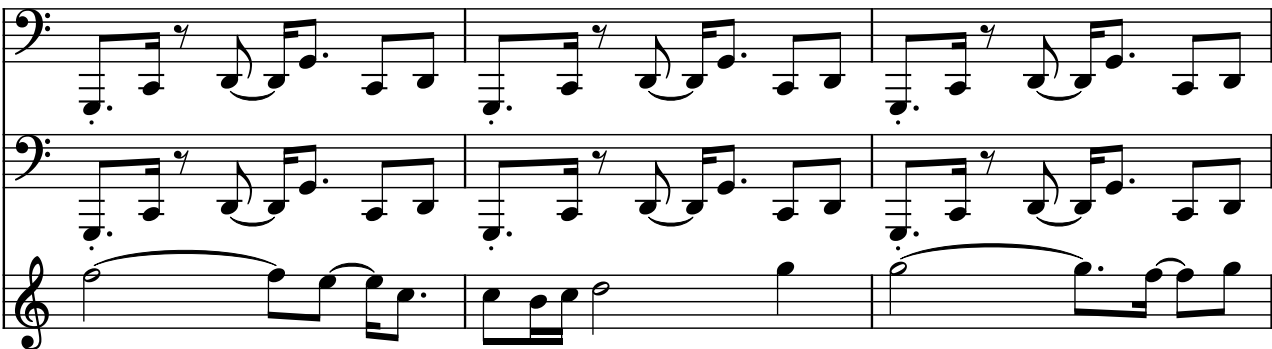
13

Synth. 


16

Synth. 

19

Synth. 

22

Synth. 

25

Synth.

Synth.

Synth.

Measures 25-27. The first two staves (bass clef) play a rhythmic pattern of eighth and sixteenth notes. The third staff (treble clef) plays a sustained chord in the first two measures, followed by a melodic line in the third measure.

28

Synth.

Synth.

Synth.

Measures 28-30. The first two staves (bass clef) play a rhythmic pattern of eighth and sixteenth notes. The third staff (treble clef) plays a sustained chord in the first two measures, followed by a melodic line in the third measure.

31

Synth.

Synth.

Synth.

Measures 31-33. The first two staves (bass clef) play a rhythmic pattern of eighth and sixteenth notes. The third staff (treble clef) plays a sustained chord in the first two measures, followed by a melodic line in the third measure.

34

Synth.

Synth.

Synth.

Measures 34-36. The first two staves (bass clef) play a rhythmic pattern of eighth and sixteenth notes. The third staff (treble clef) plays a sustained chord in the first two measures, followed by a melodic line in the third measure.

37

Synth.

Synth.

Synth.



40

Synth.

Synth.

Synth.



43

Synth.

Synth.

Synth.



46

Synth.

Synth.

Synth.



49

Synth.

Three staves of musical notation. The top two staves are in bass clef and contain a repeating eighth-note pattern. The bottom staff is in treble clef and features a long, sustained note in the first measure, followed by a series of chords and a final sustained note.

52

Synth.

Three staves of musical notation. The top two staves are in bass clef and contain a repeating eighth-note pattern. The bottom staff is in treble clef and features a series of chords and a final sustained note.

55

Synth.

Three staves of musical notation. The top two staves are in bass clef and contain a repeating eighth-note pattern. The bottom staff is in treble clef and features a series of chords and a final sustained note.