

# **Dr. Cossack's Citadel Stages 3 & 4**

Composer: Yasuaki Fujita

Game: Mega Man 4

[pianogame.org](http://pianogame.org)



Measures 19-21 of a musical score in A major (two sharps). Measure 19 features a treble staff with a half note chord (F#4, A4) and a bass staff with a continuous eighth-note pattern (F#2, G#2, A2, B2, C#3, D#3, E3, F#3). Measure 20 has a whole rest in the treble and a bass staff with eighth notes (F#2, G#2, A2, B2, C#3, D#3, E3, F#3) followed by a quarter rest. Measure 21 shows a treble staff with eighth notes (F#4, A4, G#4, F#4, E4, D#4, C#4, B3) and a bass staff with a continuous eighth-note pattern (F#2, G#2, A2, B2, C#3, D#3, E3, F#3).

Measures 22-24 of a musical score in A major. Measure 22: Treble staff has a half note (F#4) and a quarter note (A4); bass staff has a continuous eighth-note pattern. Measure 23: Treble staff has a whole rest; bass staff has a continuous eighth-note pattern. Measure 24: Treble staff has a quarter note (F#4), a quarter rest, and a triplet of eighth notes (A4, G#4, F#4); bass staff has a continuous eighth-note pattern followed by a quarter rest.

Measures 25-26 of a musical score in A major. Measure 25: Treble staff has a half note (F#4), an eighth note (A4), and a quarter note (G#4); bass staff has a continuous eighth-note pattern. Measure 26: Treble staff has a whole rest; bass staff has a continuous eighth-note pattern followed by a quarter rest.

Measures 27-28 of a musical score in A major. Measure 27: Treble staff has a half note (F#4), an eighth note (A4), and a quarter note (G#4); bass staff has a continuous eighth-note pattern. Measure 28: Treble staff has a half note (F#4), a quarter rest, and a quarter note (A4); bass staff has a continuous eighth-note pattern.

Measures 29-30 of a musical score in A major. Measure 29: Treble staff has a quarter note (F#4), an eighth note (A4), and a quarter rest; bass staff has a continuous eighth-note pattern. Measure 30: Treble staff has a quarter note (F#4), an eighth note (A4), and a quarter rest; bass staff has a continuous eighth-note pattern.

31

Measures 31 and 32 of a musical score in A major (three sharps). The piece is in 3/4 time. Measure 31 features a treble clef with a quarter rest, followed by eighth and sixteenth notes. The bass clef has a quarter rest followed by eighth and sixteenth notes. Measure 32 continues the melodic lines with eighth and sixteenth notes. A triplet of eighth notes is indicated above the final measure of the system.

33

Measures 33, 34, and 35. Measure 33 has a treble clef with eighth and sixteenth notes, and a bass clef with eighth and sixteenth notes. Measure 34 continues the melodic lines. Measure 35 features a triplet of eighth notes in the treble clef. The system ends with a sharp sign on the bass line.

36

$\text{♩} = 150$

Measures 36 and 37. Measure 36 has a treble clef with eighth and sixteenth notes, and a bass clef with eighth and sixteenth notes. Measure 37 features a treble clef with a quarter rest and a bass clef with eighth and sixteenth notes. A tempo marking of quarter note = 150 is present above the staff.

38

Measures 38, 39, and 40. Measure 38 has a treble clef with eighth and sixteenth notes, and a bass clef with eighth and sixteenth notes. Measure 39 continues the melodic lines. Measure 40 features a treble clef with eighth and sixteenth notes, and a bass clef with eighth and sixteenth notes.

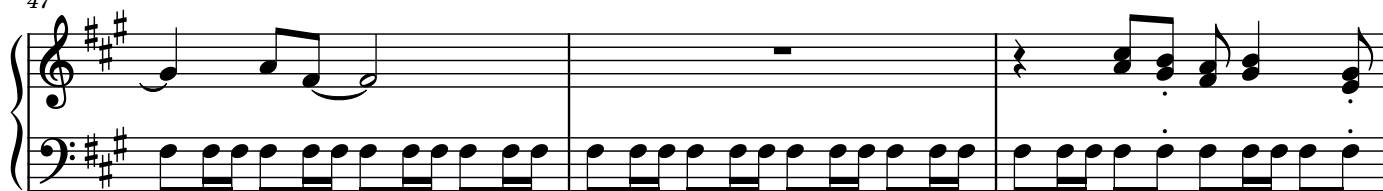
41

Measures 41, 42, and 43. Measure 41 has a treble clef with eighth and sixteenth notes, and a bass clef with eighth and sixteenth notes. Measure 42 continues the melodic lines. Measure 43 features a treble clef with a whole note and a bass clef with eighth and sixteenth notes.

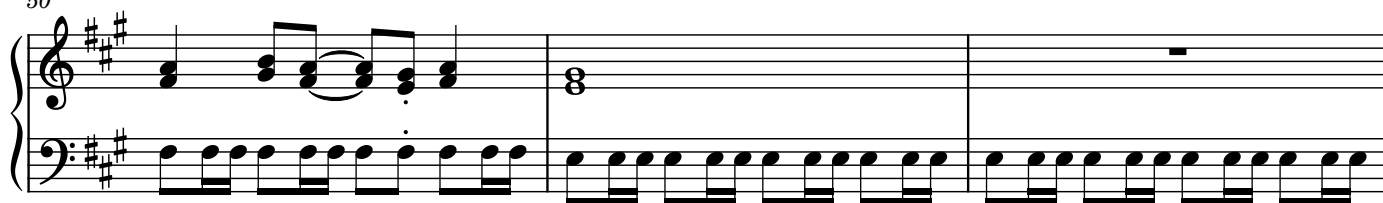
44

Measures 44, 45, and 46. Measure 44 has a treble clef with a whole note and a bass clef with eighth and sixteenth notes. Measure 45 continues the melodic lines. Measure 46 features a treble clef with eighth and sixteenth notes, and a bass clef with eighth and sixteenth notes.

47



50



53



56



59



61



63

Measures 63 and 64. The key signature is two sharps (F# and C#). Measure 63 features a treble staff with a dotted quarter note, an eighth note, and a quarter note, and a bass staff with a continuous eighth-note pattern. Measure 64 continues the bass staff pattern and includes a whole note in the treble staff.

65

Measures 65 and 66. Measure 65 has a treble staff with a quarter note, an eighth note, and a quarter note, and a bass staff with a quarter note, an eighth note, and a quarter note. Measure 66 continues the pattern with a treble staff featuring a quarter note, an eighth note, and a quarter note, and a bass staff with a quarter note, an eighth note, and a quarter note. A triplet of eighth notes is marked in the bass staff of measure 66.

67

Measures 67 and 68. Measure 67 has a treble staff with a quarter note, an eighth note, and a quarter note, and a bass staff with a quarter note, an eighth note, and a quarter note. Measure 68 continues the pattern with a treble staff featuring a quarter note, an eighth note, and a quarter note, and a bass staff with a quarter note, an eighth note, and a quarter note. A triplet of eighth notes is marked in the bass staff of measure 68.

69

Measures 69, 70, and 71. Measure 69 has a treble staff with a quarter note, an eighth note, and a quarter note, and a bass staff with a quarter note, an eighth note, and a quarter note. Measure 70 continues the pattern with a treble staff featuring a quarter note, an eighth note, and a quarter note, and a bass staff with a quarter note, an eighth note, and a quarter note. Measure 71 continues the pattern with a treble staff featuring a quarter note, an eighth note, and a quarter note, and a bass staff with a quarter note, an eighth note, and a quarter note.

72

Measures 72 and 73. Measure 72 has a treble staff with a quarter note, an eighth note, and a quarter note, and a bass staff with a quarter note, an eighth note, and a quarter note. Measure 73 continues the pattern with a treble staff featuring a quarter note, an eighth note, and a quarter note, and a bass staff with a quarter note, an eighth note, and a quarter note.