

Level 2 - Hackslash

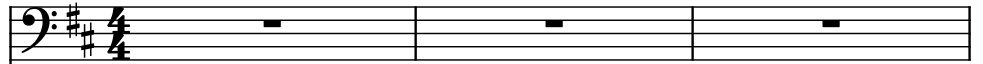
Composer: Richard Wells

Game: Radix: Beyond the Void

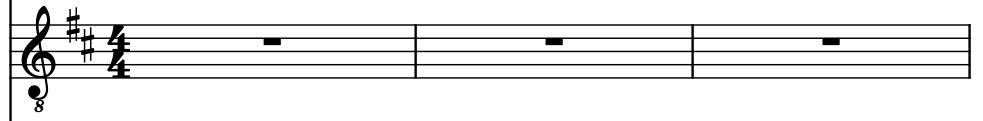
pianogame.org

♩ = 148

Bass Synthesizer, Electric Bass



Electric Guitar, Electric Guitar

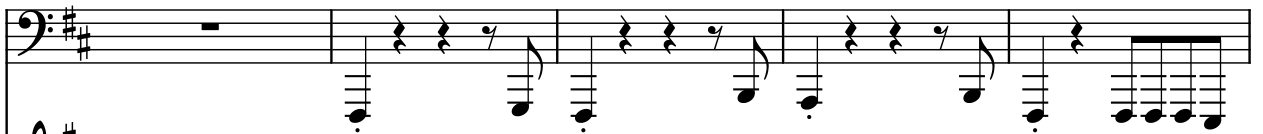


Electric Guitar, Electric Guitar



4

Synth.



El. Guit.



El. Guit.



9

Synth.



El. Guit.



El. Guit.



13

Synth.



El. Guit.



El. Guit.



17

Synth.

El. Guit.

El. Guit.

8

21

Synth.

El. Guit.

El. Guit.

8

24

Synth.

El. Guit.

El. Guit.

8

##|##|
#|#|

##|##|
#|#|

27

Synth.

El. Guit.

El. Guit.

8

##|##|
#|#|

##|##|
#|#|

##|##|
#|#|

30

Synth.

El. Guit.

El. Guit.

8

33

Synth.

El. Guit.

El. Guit.

8

36

Synth.

El. Guit.

El. Guit.

8

40

Synth.

El. Guit.

El. Guit.

8

44

Synth.

El. Guit.

El. Guit.

8

48

Synth.

El. Guit.

El. Guit.

8

52

Synth.

El. Guit.

El. Guit.

8

56

Synth.

El. Guit.

El. Guit.

8

63

66

69

The image shows a musical score for three instruments: Synth, El. Guit., and El. Guit. The Synth part is in the bass clef, and the two El. Guit. parts are in the treble clef. The key signature is one sharp (F#), and the time signature is 4/4. The score is divided into three measures. The first measure shows the Synth playing a descending line of eighth notes, while the El. Guit. parts play a series of chords. The second measure shows the Synth playing a descending line of eighth notes, while the El. Guit. parts play a series of chords. The third measure shows the Synth playing a descending line of eighth notes, while the El. Guit. parts play a series of chords. The score is written in a style that is typical of a musical score, with notes, stems, and bar lines clearly visible.

72

Synth.

El. Guit.

El. Guit.

8

75

Synth.

El. Guit.

El. Guit.

8