

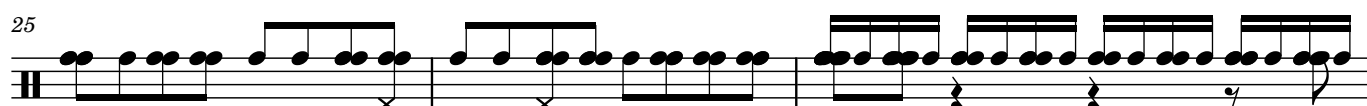
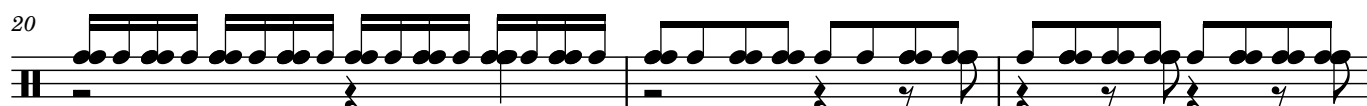
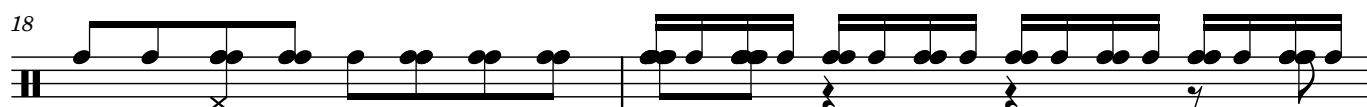
Hideout Helm

Composer: Grant Kirkhope

Game: Donkey Kong 64

pianogame.org

♩ = 130



2

33

3

36

3

38

3

42

3

44

3

47

3

50

3

52

3

57


3

60

3

63

3

66 

70

The musical notation for measure 70 consists of a single staff. It begins with a double bar line. The first group of notes is a half note followed by a quarter note, then a half note, and finally a quarter note. This is followed by a half note, a quarter note, and a half note. The next group consists of a half note, a quarter note, and a half note. This is followed by a half note, a quarter note, and a half note. The final group consists of a half note, a quarter note, and a half note. The notes are marked with 'x'.

74

78

78

82

86

90


The Rose Tree

94



Exercise 94 is a single melodic line on a five-line staff. It consists of 16 measures. The notation includes eighth and sixteenth notes, often beamed together in groups of four or eight. There are rests in measures 2, 4, 6, 8, 10, 12, 14, and 16. The exercise is marked with a double bar line at the end of measure 16.

97



100

Example 100 is a musical score for a treble and bass staff. The treble staff contains a series of eighth-note chords, mostly triads, with some dyads. The bass staff contains a series of eighth-note chords, mostly dyads, with some triads. The notation is complex, with many beamed notes and rests.

102

103

