

Stage 5 - Springfield Butte

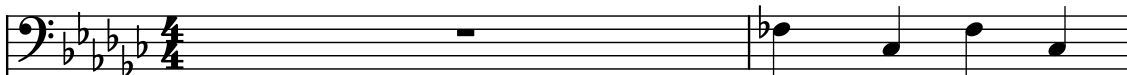
Composer: Danny Elfman

Game: Simpsons, The

pianogame.org

♩ = 150

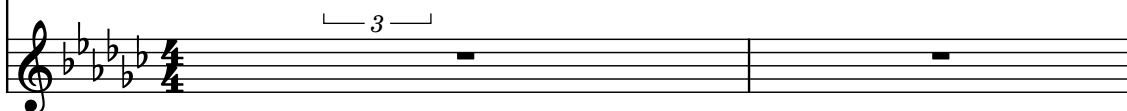
Bass Guitar, Bass



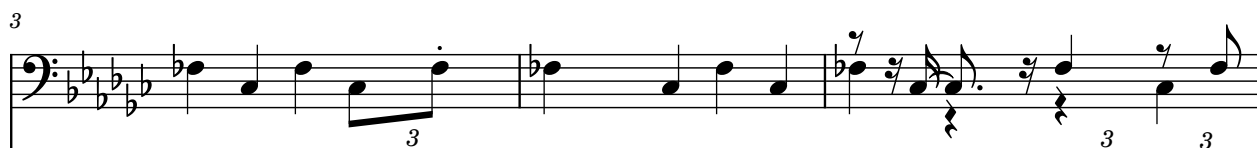
Violin, Melody 1



Celesta, Celesta



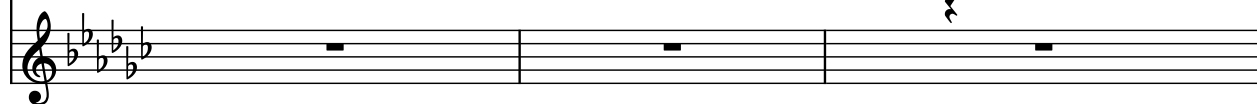
B. Guit.



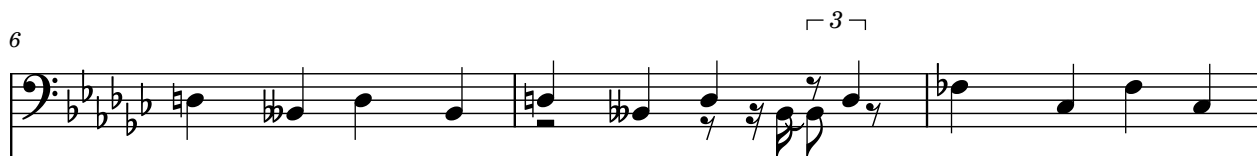
Vln.



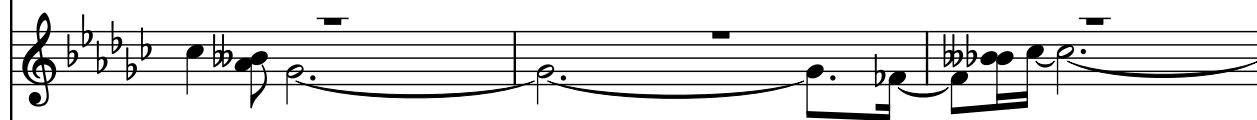
Cel.



B. Guit.



Vln.



Cel.



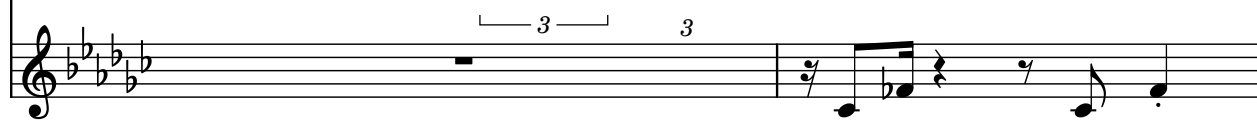
B. Guit.



Vln.



Cel.



11

B. Guit.

Vln.

Cel.

Measures 11-15. B. Guit. has a melodic line in bass clef. Vln. and Cel. have whole rests.

16

B. Guit.

Vln.

Cel.

Measures 16-20. B. Guit. has a melodic line in bass clef. Vln. and Cel. have whole rests.

21

B. Guit.

Vln.

Cel.

Measures 21-23. B. Guit. has a melodic line in bass clef. Vln. has a melodic line in treble clef. Cel. has whole rests.

24

B. Guit.

Vln.

Cel.

Measures 24-26. B. Guit. has a melodic line in bass clef. Vln. has a melodic line in treble clef. Cel. has whole rests.

27

B. Guit.

Vln.

Cel.

3

Measures 27-28. Bass guitar (B. Guit.) has a triplet of eighth notes. Violin (Vln.) has a long note with a triplet of eighth notes. Cello (Cel.) has a triplet of eighth notes.

29

B. Guit.

Vln.

Cel.

3

Measures 29-30. Bass guitar (B. Guit.) has a triplet of eighth notes. Violin (Vln.) has a triplet of eighth notes. Cello (Cel.) has a triplet of eighth notes.

31

B. Guit.

Vln.

Cel.

Measures 31-35. Bass guitar (B. Guit.) has a triplet of eighth notes. Violin (Vln.) and Cello (Cel.) have a triplet of eighth notes.

36

B. Guit.

Vln.

Cel.

3

Measures 36-40. Bass guitar (B. Guit.) has a triplet of eighth notes. Violin (Vln.) and Cello (Cel.) have a triplet of eighth notes.

44

B. Guit.

Vln.

Cel.

47

B. Guit.

Vln.

Cel.

3

49

B. Guit.

Vln.

Cel.

51

B. Guit.

Vln.

Cel.




56

B. Guit.

Vln.

Cel.



61

B. Guit.

Vln.

Cel.



64

B. Guit.

Vln.

Cel.



67

B. Guit.

Vln.

Cel.

3

69

B. Guit.

Vln.

Cel.

3

3

71

B. Guit.

Vln.

Cel.

76

B. Guit.

Vln.

Cel.

3

81

B. Guit.

Vln.

Cel.

3