

Vs. Ridley

Composer: Kenji Yamamoto

Game: Super Metroid

pianogame.org

♩ = 115



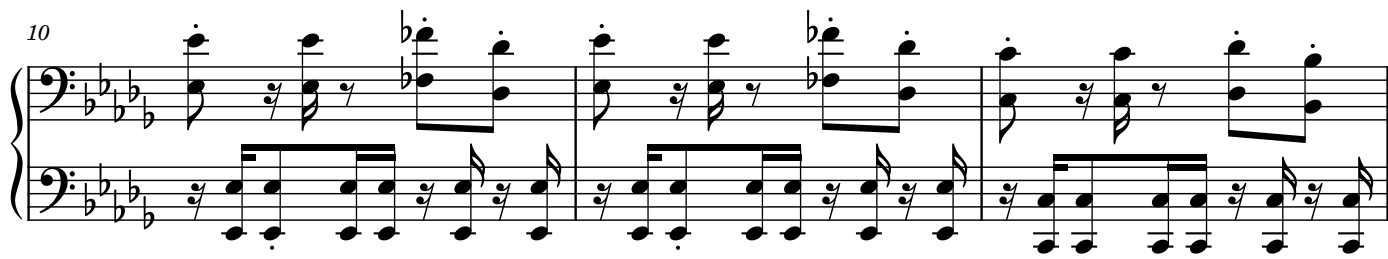
4



7



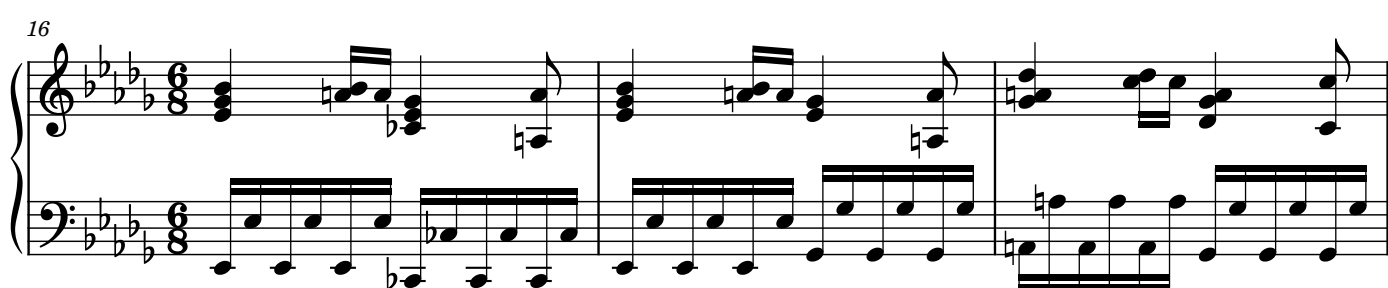
10



13



16



19

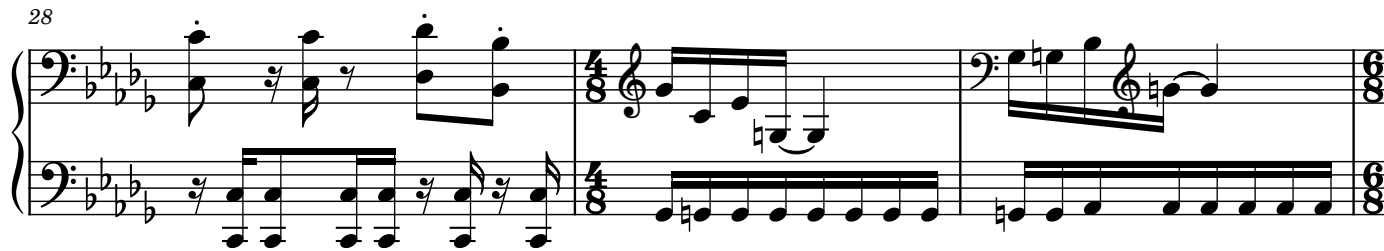




25



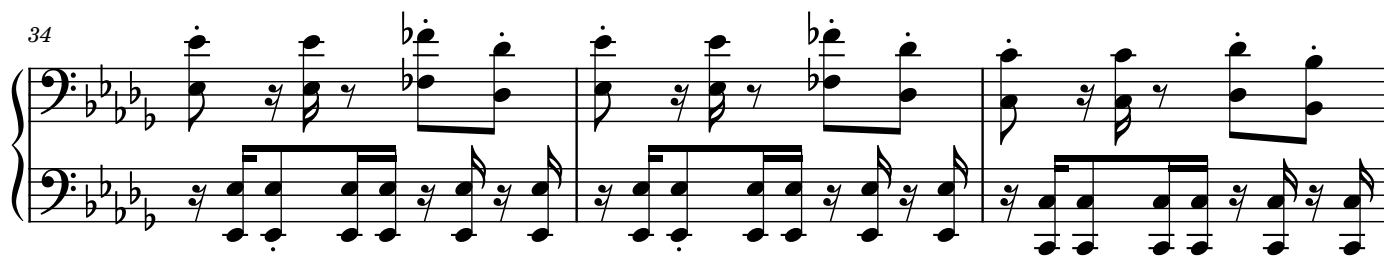
28



31



34



37



40



43

This musical score segment consists of four measures. The key signature is three flats (B-flat, E-flat, A-flat). The time signature is 4/8. The notation is as follows:

- Measure 43:** Treble clef has a whole chord of B-flat3, D-flat4, F4, and A-flat4. Bass clef has a half-note chord of B-flat3 and D-flat4, followed by a quarter-note chord of F4 and A-flat4.
- Measure 44:** Treble clef has a half-note chord of B-flat3 and D-flat4, followed by a quarter-note chord of F4 and A-flat4. Bass clef has a half-note chord of B-flat3 and D-flat4, followed by a quarter-note chord of F4 and A-flat4.
- Measure 45:** Treble clef has a half-note chord of B-flat3 and D-flat4, followed by a quarter-note chord of F4 and A-flat4. Bass clef has a half-note chord of B-flat3 and D-flat4, followed by a quarter-note chord of F4 and A-flat4.
- Measure 46:** Treble clef has a half-note chord of B-flat3 and D-flat4, followed by a quarter-note chord of F4 and A-flat4. Bass clef has a half-note chord of B-flat3 and D-flat4, followed by a quarter-note chord of F4 and A-flat4.