

Aquarius (Halloween Remix)

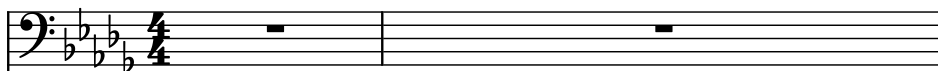
Composer: Kinuyo Yamashita

Game: Castlevania 3

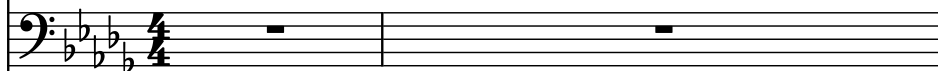
pianogame.org

♩ = 120

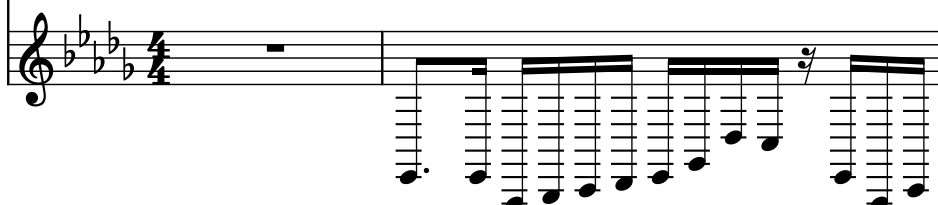
Contrabass, tk1 [Guit. FX]



Contrabass, tk2 [Guit. FX Echo]

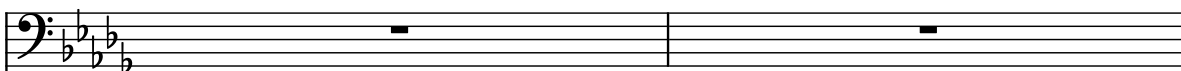


Pedal Steel Guitar, tk3

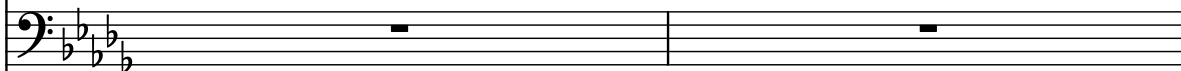


3

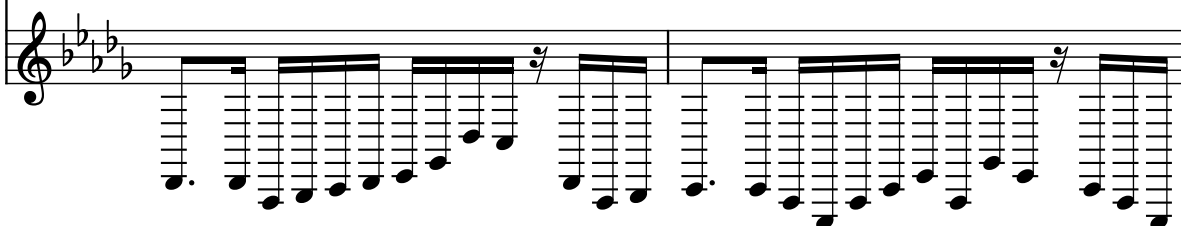
Cb.



Cb.

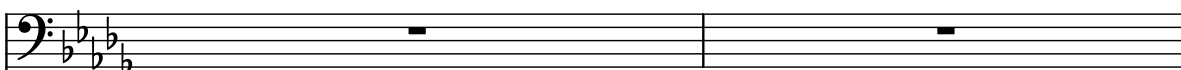


Ped. St. Guit.

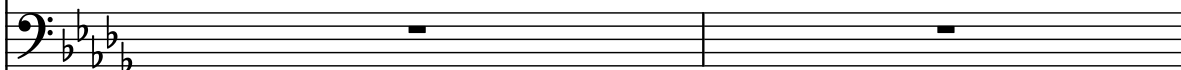


5

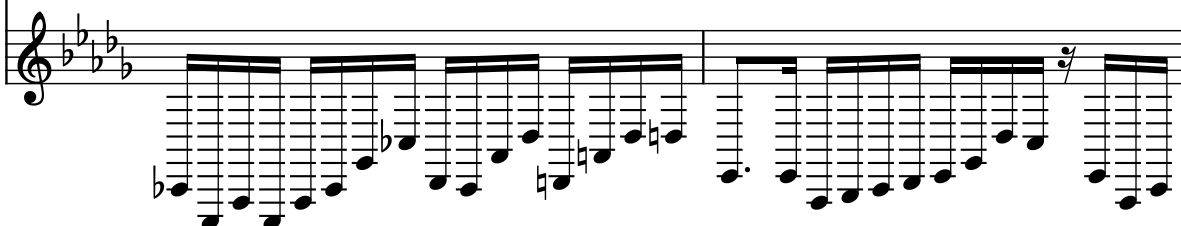
Cb.



Cb.

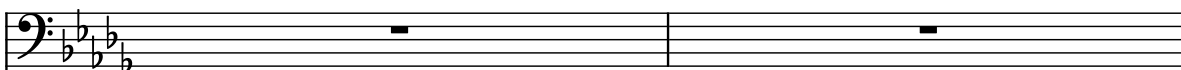


Ped. St. Guit.

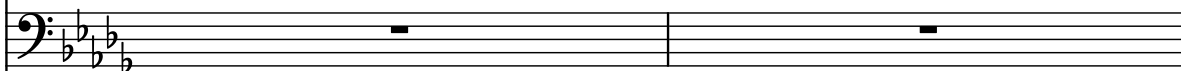


7

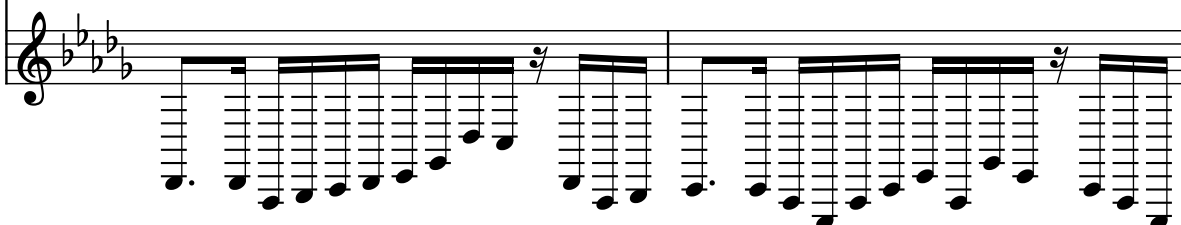
Cb.



Cb.



Ped. St. Guit.



9

Cb.

Cb.

Ped. St. Guit.

11

Cb.

Cb.

Ped. St. Guit.

13

Cb.

Cb.

Ped. St. Guit.

15

Cb.

Cb.

Ped. St. Guit.

17

Cb.

Cb.

Ped. St. Guit.

19

Cb.

Cb.

Ped. St. Guit.

21

Cb.

Cb.

Ped. St. Guit.

23

Cb. Musical staff for Cb. (23-24) showing two measures of whole rests.

Cb. Musical staff for Cb. (23-24) showing two measures of whole rests.

Ped. St. Guit. Musical staff for Ped. St. Guit. (23-24) showing two measures of continuous eighth-note patterns. The key signature has four flats.

25

Cb. Musical staff for Cb. (25-26) showing two measures of whole rests.

Cb. Musical staff for Cb. (25-26) showing two measures of whole rests.

Ped. St. Guit. Musical staff for Ped. St. Guit. (25-26) showing two measures of continuous eighth-note patterns. The key signature has four flats.

27

Cb. Musical staff for Cb. (27-28) showing two measures of whole rests.

Cb. Musical staff for Cb. (27-28) showing two measures of whole rests.

Ped. St. Guit. Musical staff for Ped. St. Guit. (27-28) showing two measures of continuous eighth-note patterns. The key signature has four flats.

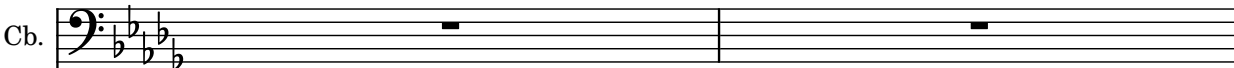
29

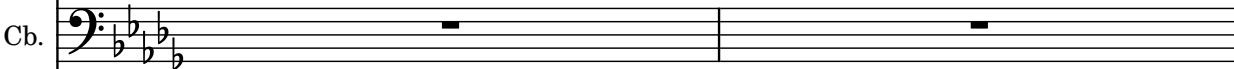
Cb. Musical staff for Cb. (29-30) showing two measures of whole rests.

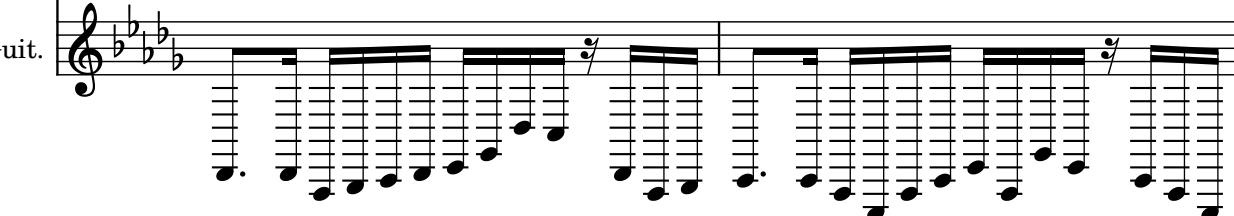
Cb. Musical staff for Cb. (29-30) showing two measures of whole rests.

Ped. St. Guit. Musical staff for Ped. St. Guit. (29-30) showing two measures of continuous eighth-note patterns. The key signature has four flats.

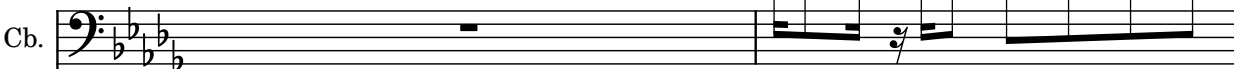
31

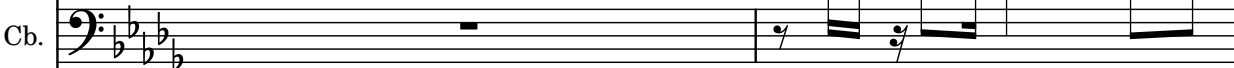
Cb. 


Cb. 

Ped. St. Guit. 


33


Cb. 

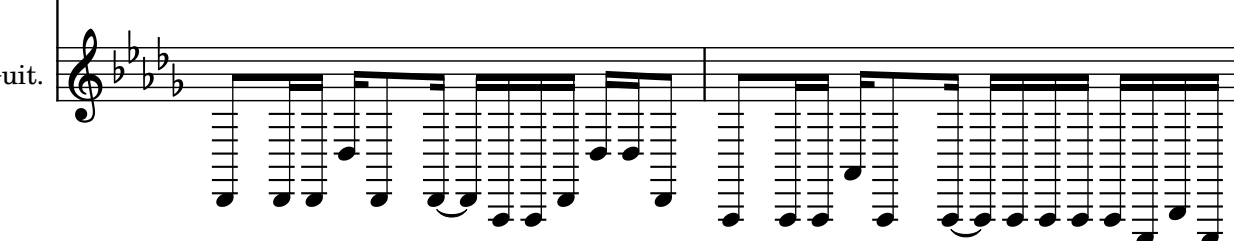
Cb. 

Ped. St. Guit. 

35

Cb. 

Cb. 

Ped. St. Guit. 

37

Cb.

Cb.

Ped. St. Guit.

39

Cb.

Cb.

Ped. St. Guit.

41

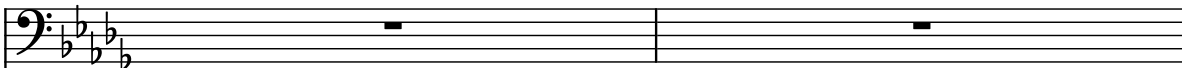
Cb.

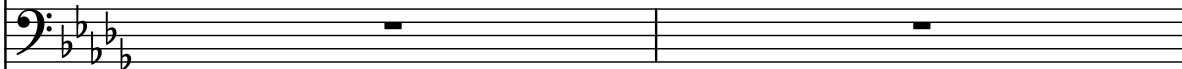
Cb.

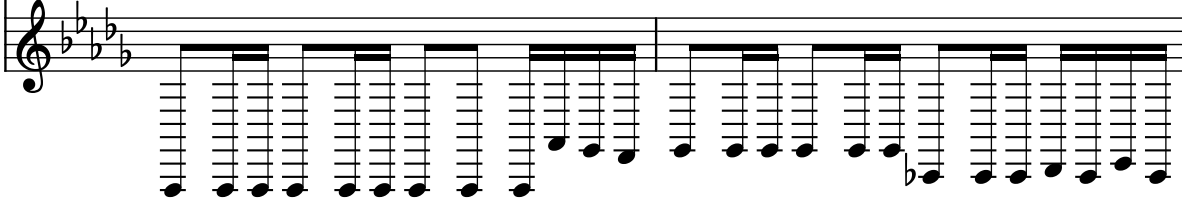
Ped. St. Guit.

Detailed description of the musical score: The score is written for three instruments: two Contrabasses (Cb.) and a Pedal Steel Guitar (Ped. St. Guit.). The key signature is B-flat major, indicated by two flats (B-flat and E-flat) on the bass clef. The time signature is not explicitly shown but appears to be 4/4 based on the note values. The score is divided into three systems, each starting with a measure number: 37, 39, and 41. In each system, the two Cb. staves are grouped together, and the Ped. St. Guit. staff is below them. The Cb. parts feature a variety of note values, including eighth and sixteenth notes, often beamed together, and some measures contain rests. The Ped. St. Guit. part consists of a continuous, rhythmic pattern of eighth notes, often with a pedal point (a sustained note, likely the low B-flat) in the left hand. The notation includes various musical symbols such as accidentals (flats), ties, and slurs.

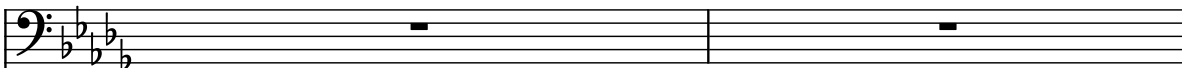
43

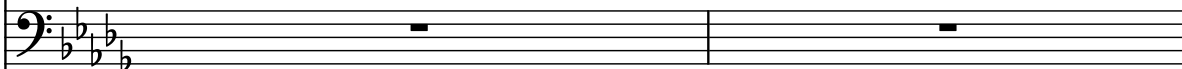
Cb. 

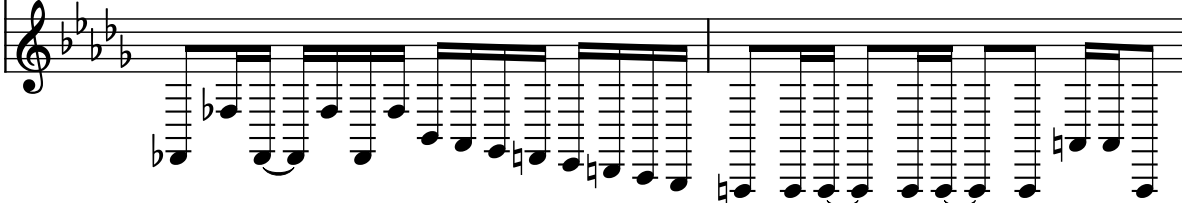
Cb. 

Ped. St. Guit. 

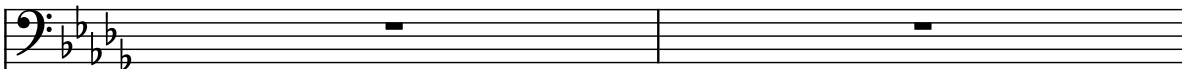
45

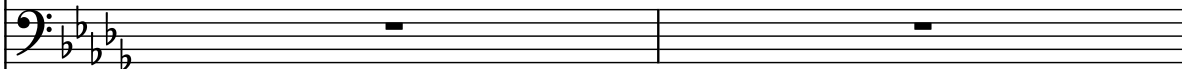
Cb. 

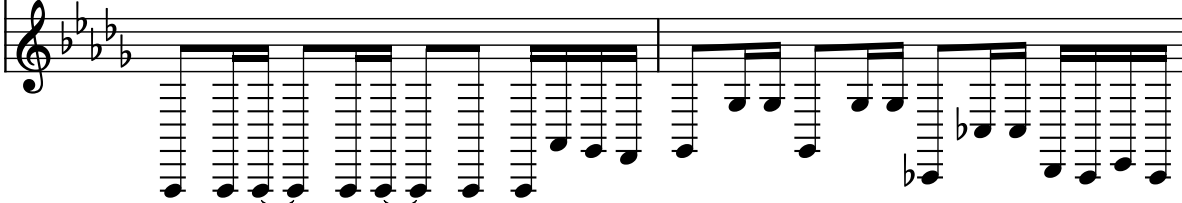
Cb. 

Ped. St. Guit. 

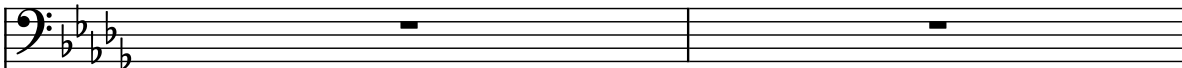
47

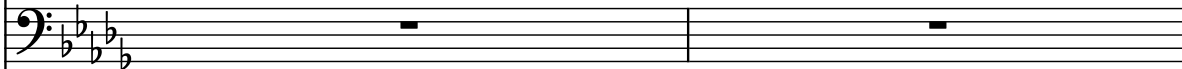
Cb. 

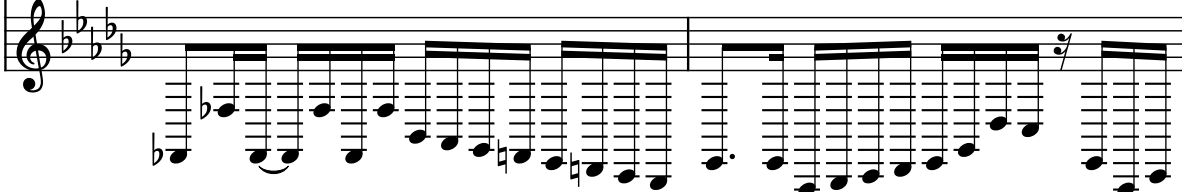
Cb. 

Ped. St. Guit. 

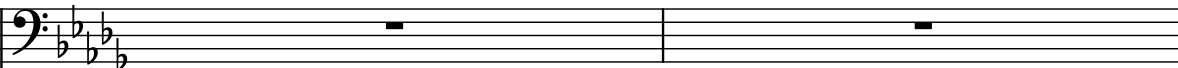
49

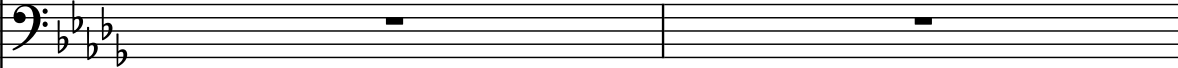
Cb. 

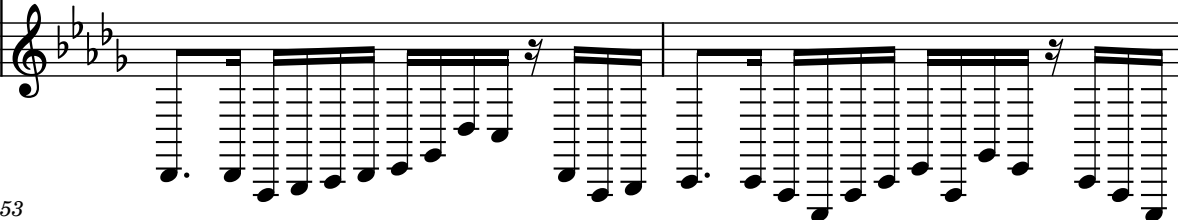
Cb. 

Ped. St. Guit. 

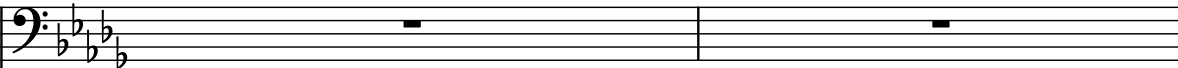
51

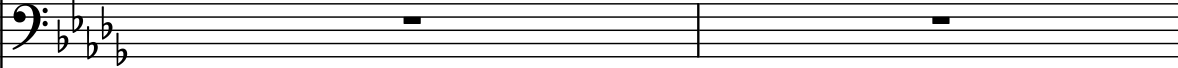
Cb. 

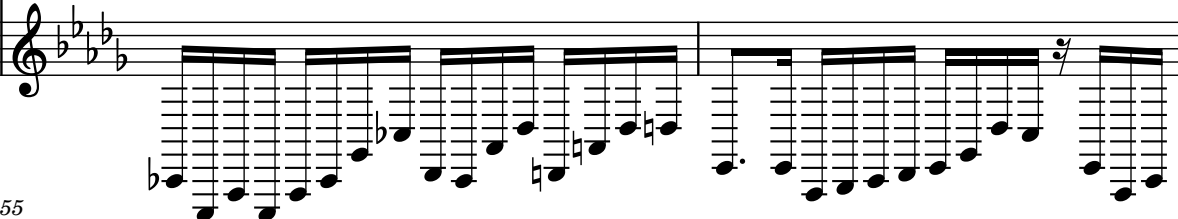
Cb. 

Ped. St. Guit. 

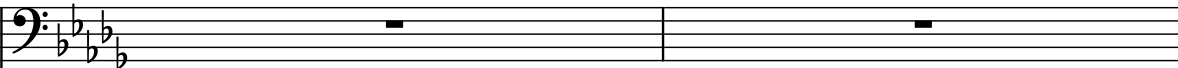
53

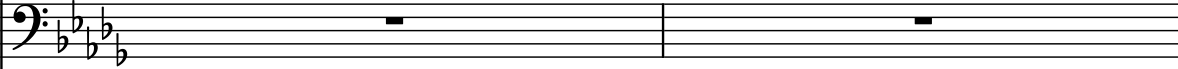
Cb. 

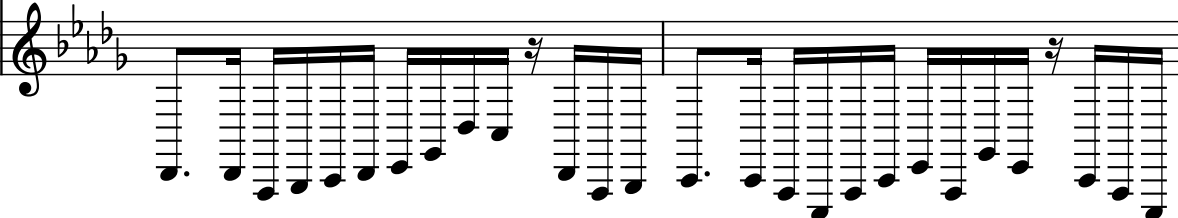
Cb. 

Ped. St. Guit. 

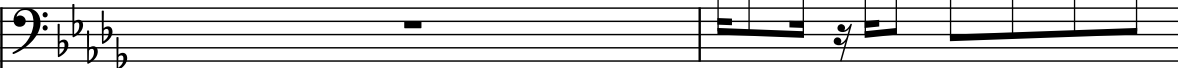
55

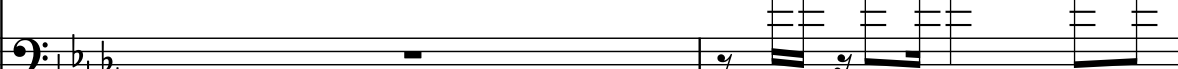
Cb. 

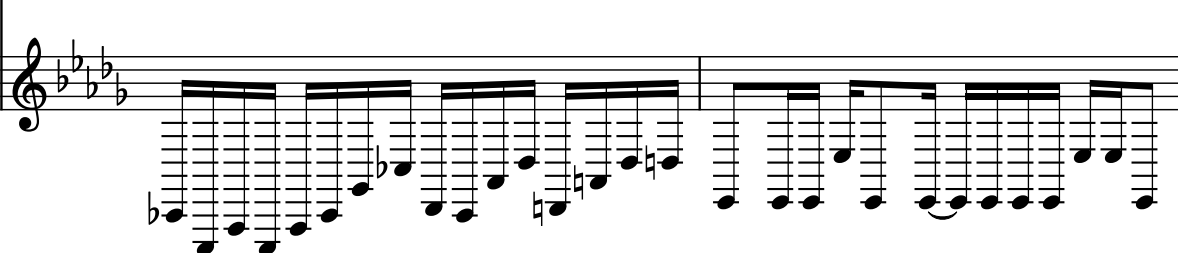
Cb. 

Ped. St. Guit. 

57

Cb. 

Cb. 

Ped. St. Guit. 

59

Cb.

Cb.

Ped. St. Guit.

61

Cb.

Cb.

Ped. St. Guit.

63

Cb.

Cb.

Ped. St. Guit.

65

Cb.

Cb.

Ped. St. Guit.

67

Cb.

Cb.

Ped. St. Guit.

69

Cb.

Cb.

Ped. St. Guit.

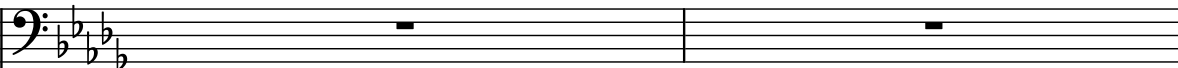
71

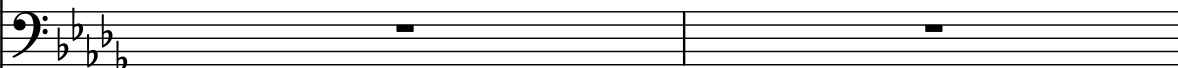
Cb.

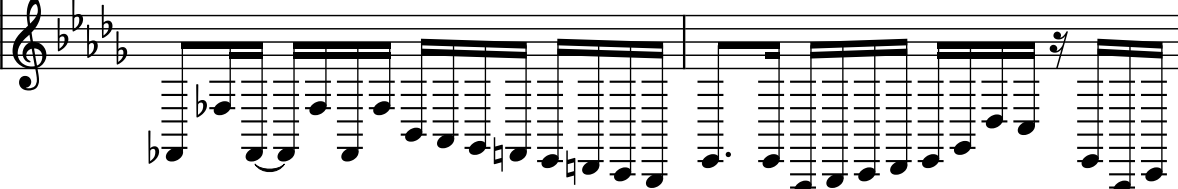
Cb.

Ped. St. Guit.

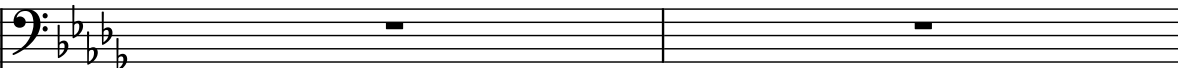
73

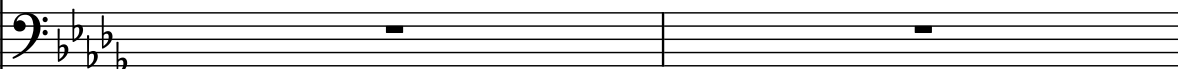
Cb. 

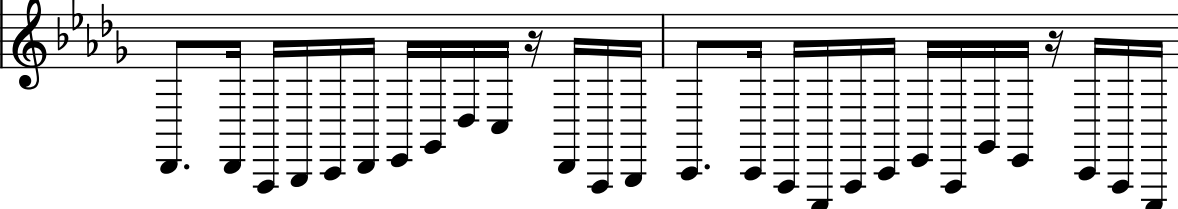
Cb. 

Ped. St. Guit. 

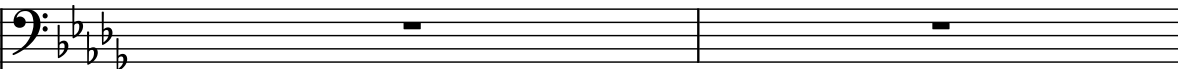
75

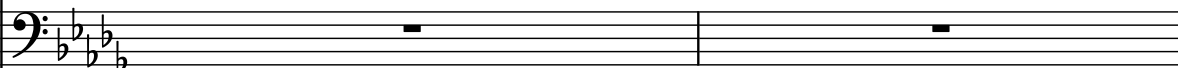
Cb. 


Cb. 

Ped. St. Guit. 

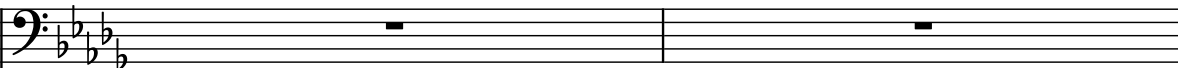
77

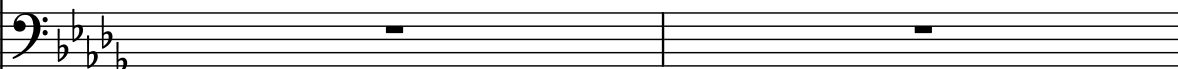
Cb. 

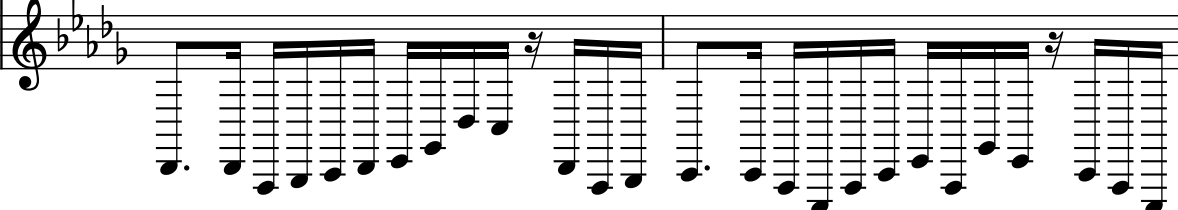
Cb. 

Ped. St. Guit. 

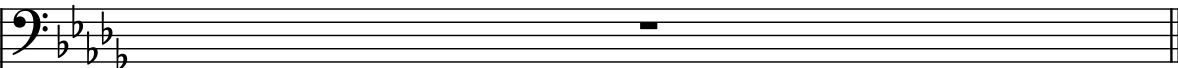
79

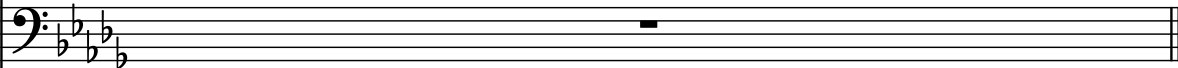
Cb. 

Cb. 

Ped. St. Guit. 

81

Cb. 

Cb. 

Ped. St. Guit. 