

Kimi No Tonari

Composer: Toshiko Tasaki

Game: Persona 2: Innocent Sin

pianogame.org

$\text{♩} = 90$
 $\frac{4}{4}$

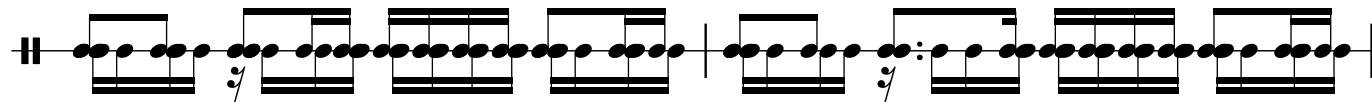
4



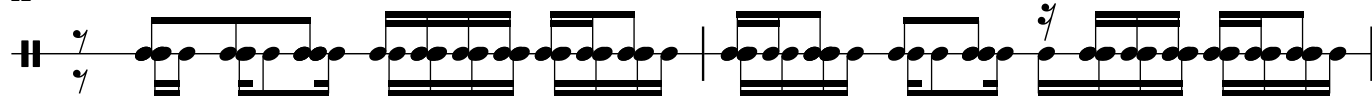
7



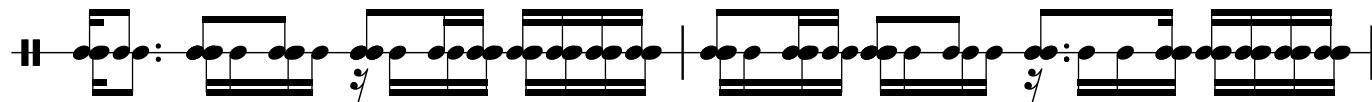
10



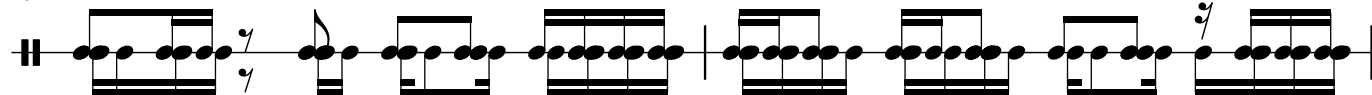
12



14



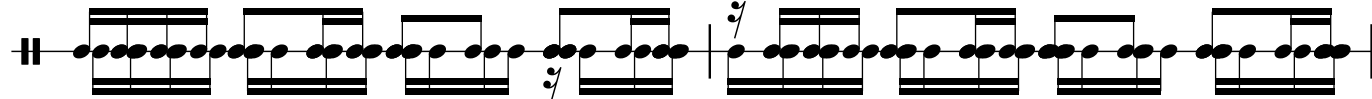
16



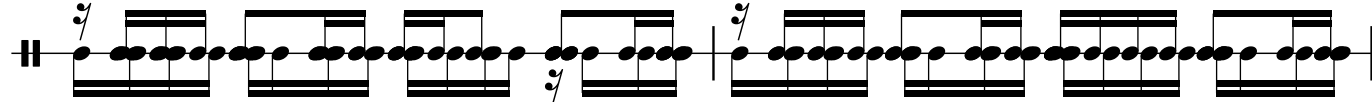
18



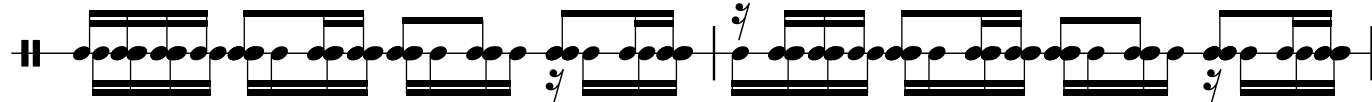
20



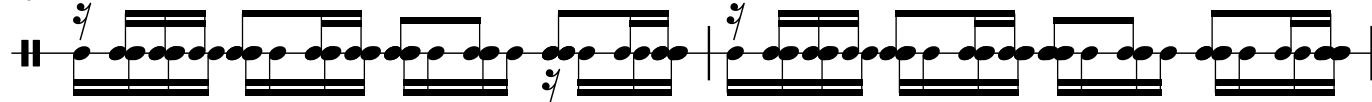
22



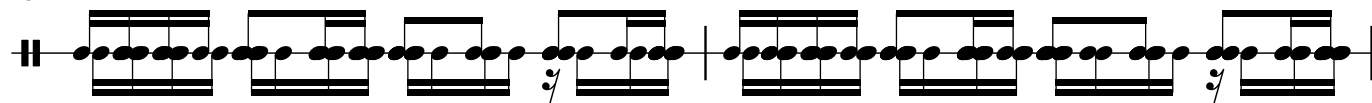
24



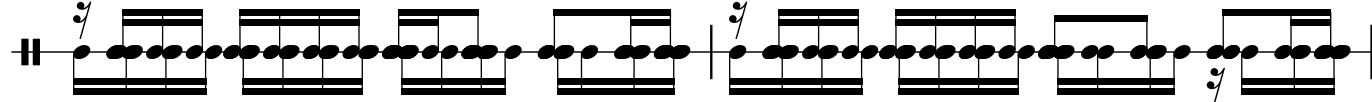
26



28

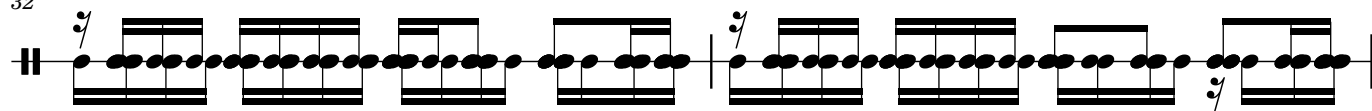


30

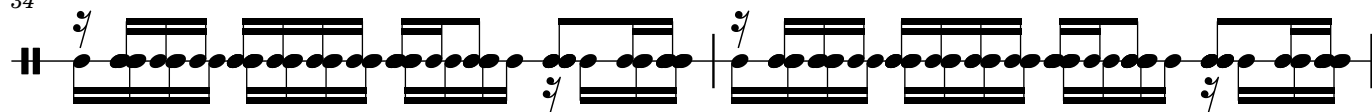


2

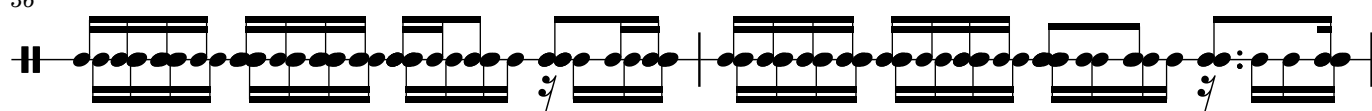
32



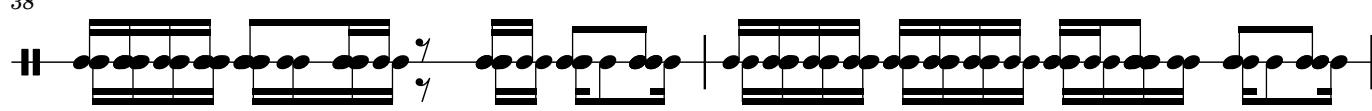
34



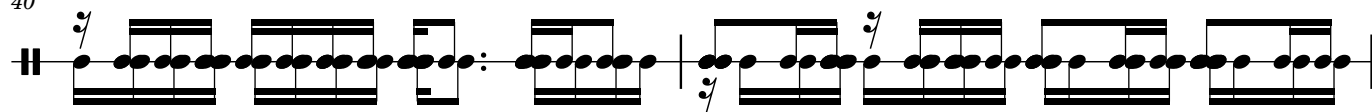
36



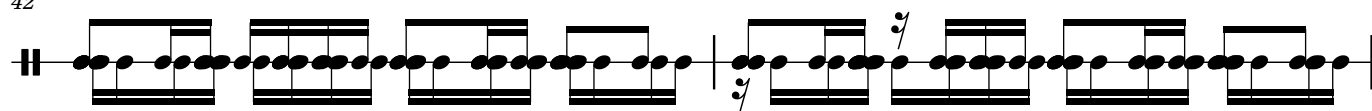
38



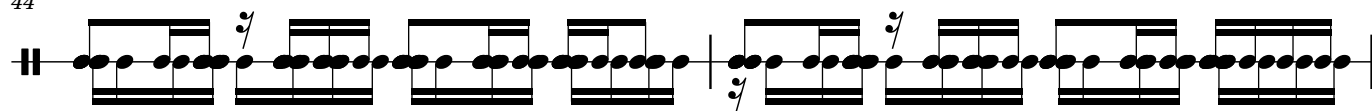
40



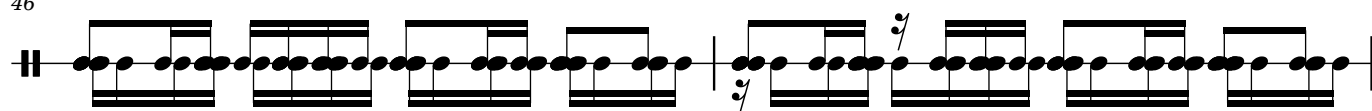
42



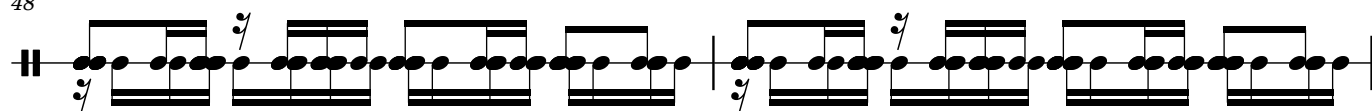
44



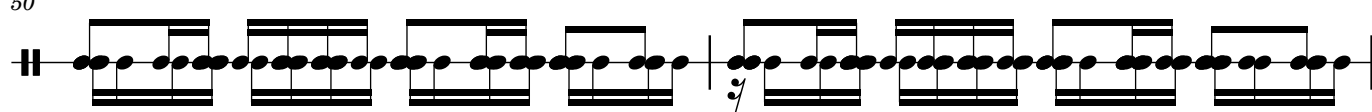
46



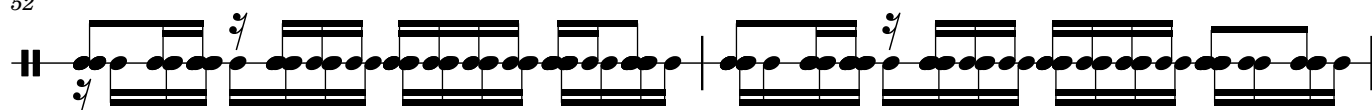
48



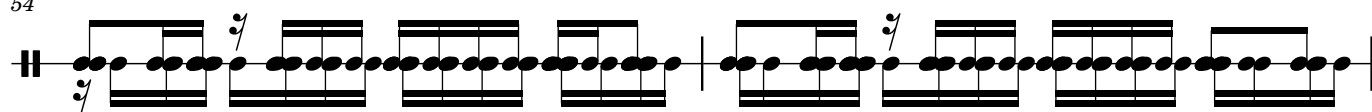
50



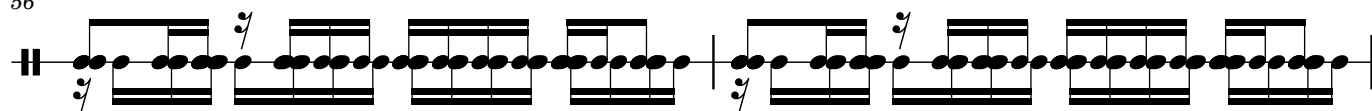
52



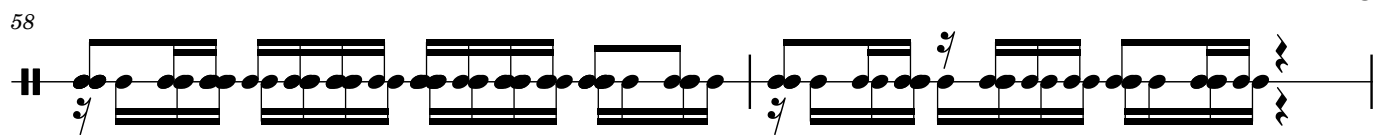
54



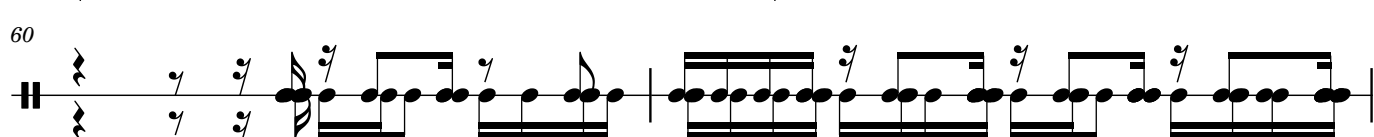
56



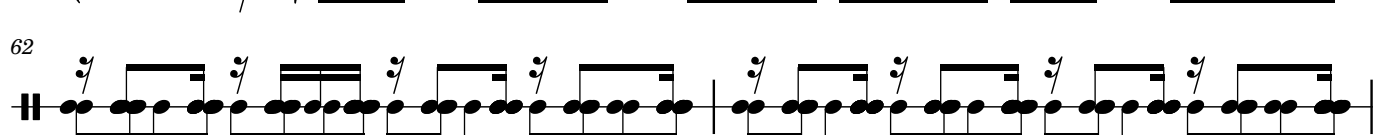
58




60



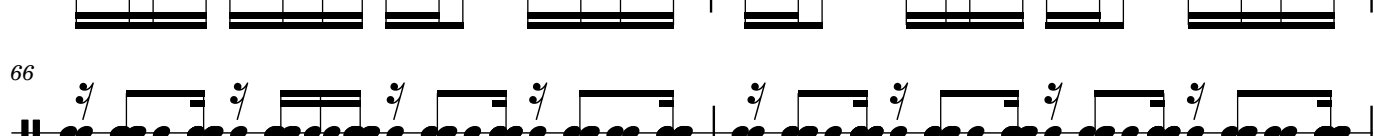
62




64



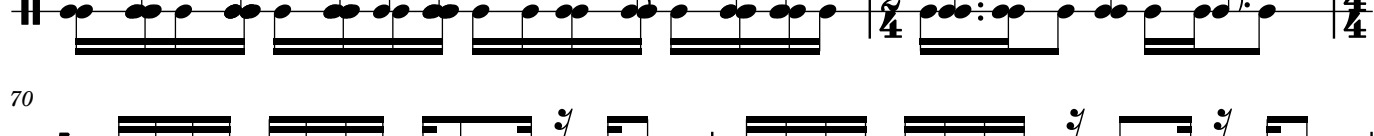
66



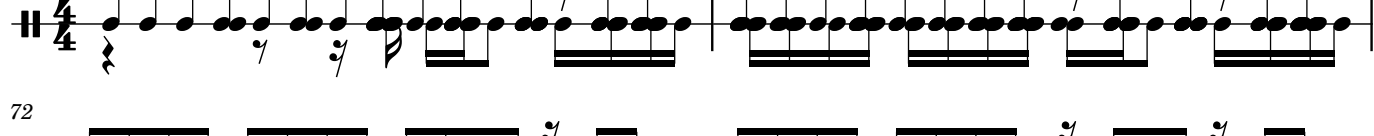
68



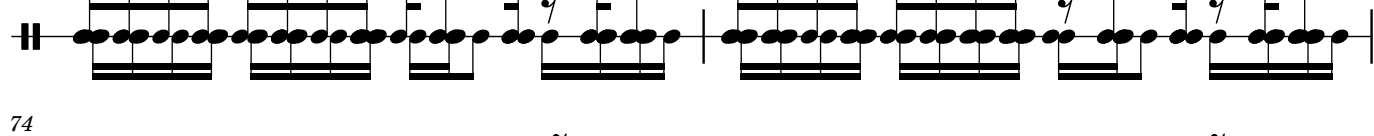
70



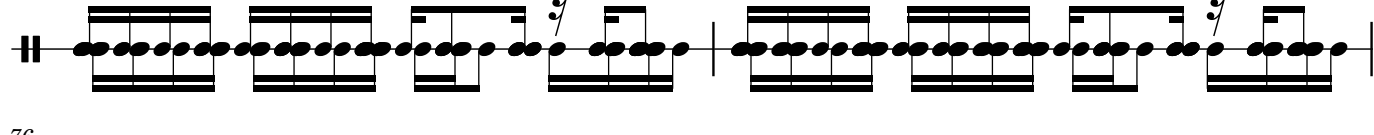
72



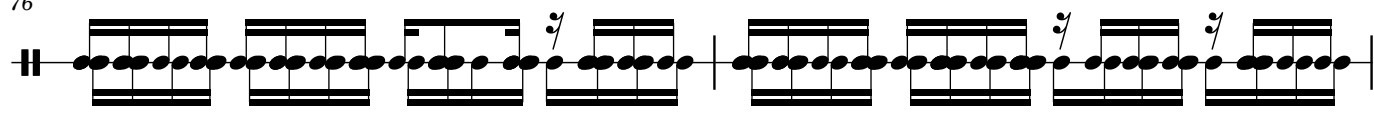
74



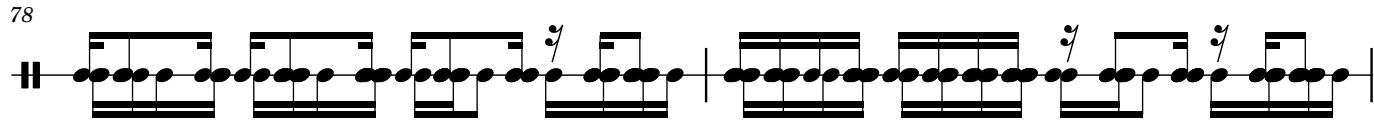
76



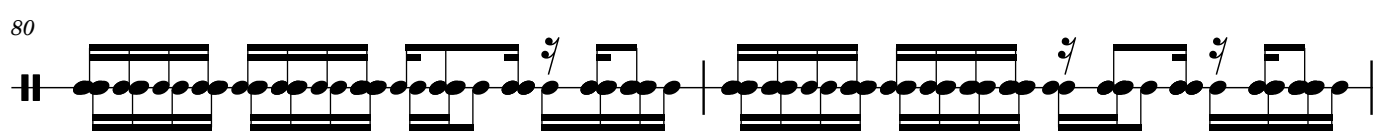
78



80



82



84

[illegible]

86

88

90

90

The musical score for Example 10 is written on a single staff. It begins with a double bar line. The first measure contains a series of eighth notes. The second measure contains a series of eighth notes, followed by a quarter note with a fermata. The third measure contains a series of eighth notes, followed by a quarter note with a fermata. The fourth measure contains a series of eighth notes, followed by a quarter note with a fermata. The fifth measure contains a series of eighth notes, followed by a quarter note with a fermata. The sixth measure contains a series of eighth notes, followed by a quarter note with a fermata. The seventh measure contains a series of eighth notes, followed by a quarter note with a fermata. The eighth measure contains a series of eighth notes, followed by a quarter note with a fermata. The ninth measure contains a series of eighth notes, followed by a quarter note with a fermata. The tenth measure contains a series of eighth notes, followed by a quarter note with a fermata. The score ends with a double bar line.

92

92 