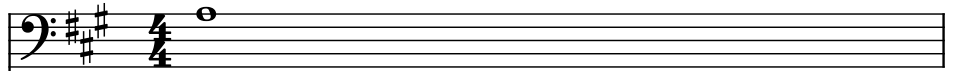


Tourian

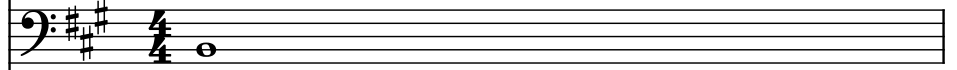
Composer: Kenji Yamamoto
Game: Metroid: Zero Mission
pianogame.org

♩ = 138

String Synthesizer, Top Note



Contrabasses (section), Bass Line

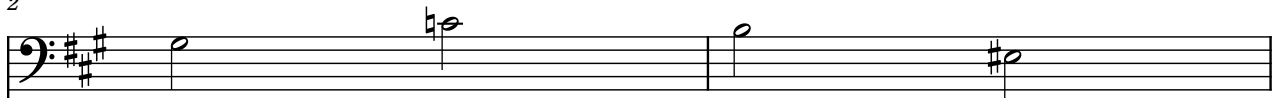


Tenor Saxophone, Computer

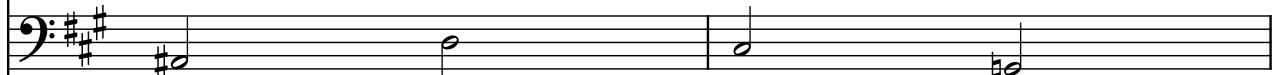


2

Synth.



Cbs.

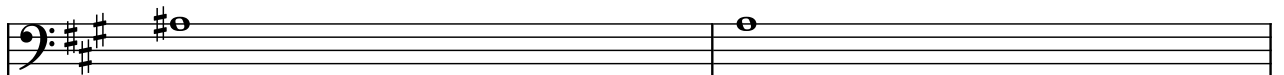


T. Sax.

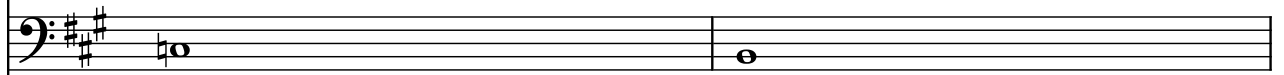


4

Synth.



Cbs.

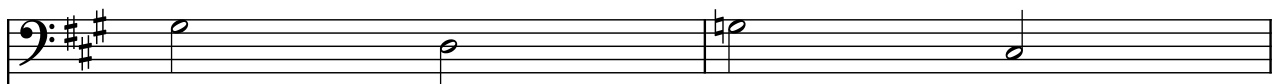


T. Sax.

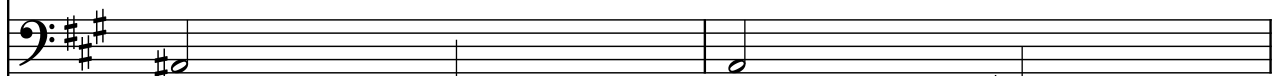


6

Synth.



Cbs.



T. Sax.



8

Synth.

Cbs.

T. Sax.

Measures 8 and 9. The Synth and Cbs. parts play sustained notes. The T. Sax. part features a complex melodic line with many beamed notes.

10

Synth.

Cbs.

T. Sax.

Measures 10 and 11. The Synth and Cbs. parts play sustained notes. The T. Sax. part continues the complex melodic line.

12

Synth.

Cbs.

T. Sax.

Measures 12 and 13. The Synth and Cbs. parts play sustained notes. The T. Sax. part continues the complex melodic line.

14

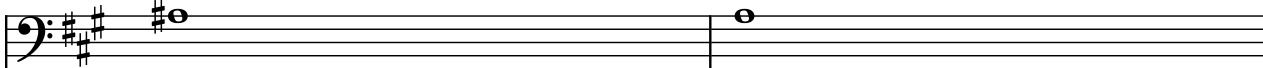
Synth.

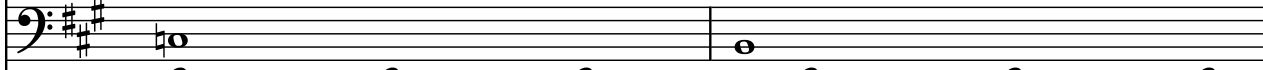
Cbs.


T. Sax.

Measures 14 and 15. The Synth and Cbs. parts play sustained notes. The T. Sax. part continues the complex melodic line.

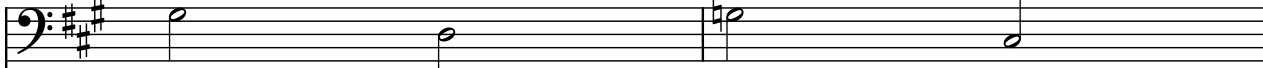
16

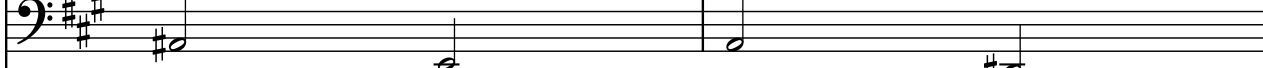
Synth. 


Cbs. 

T. Sax. 

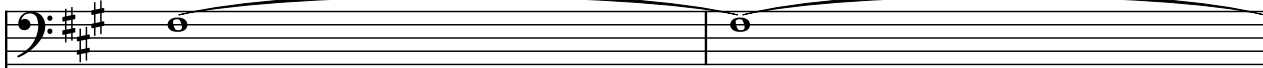
18

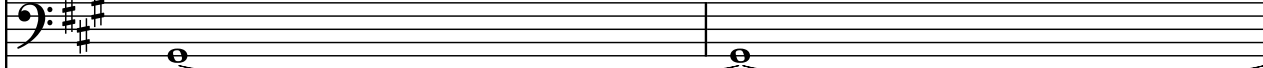
Synth. 


Cbs. 

T. Sax. 

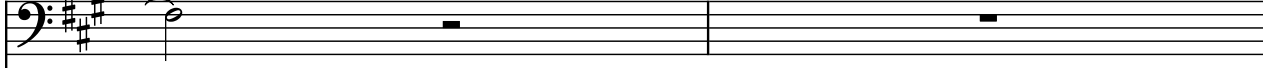
20

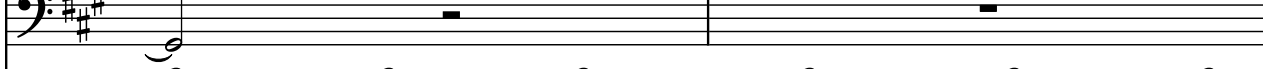
Synth. 


Cbs. 

T. Sax. 

22

Synth. 

Cbs. 

T. Sax. 

24

Synth.

Cbs.

T. Sax.

The image shows a musical score for measures 24 through 27. The score is written for three instruments: Synth., Cbs., and T. Sax. The Synth. and Cbs. staves are in bass clef with a key signature of three sharps (F#, C#, G#). The T. Sax. staff is in treble clef with a key signature of three flats (Bb, Eb, Ab). Measures 24 and 25 show Synth. and Cbs. playing a single note (F#4) while T. Sax. plays a descending eighth-note scale. Measures 26 and 27 show Synth. and Cbs. playing a single note (F#4) while T. Sax. plays a descending eighth-note scale. The piece ends with a double bar line at the end of measure 27.