

Cid's Theme

Composer: Nobuo Uematsu

Game: Final Fantasy 7

pianogame.org

♩ = 93

1

4

2

7

3

9

4

12

5

14

6

17

7

19

8

21

Measures 21-22 of a musical score. Measure 21 features a complex texture with multiple staves, including a grand staff with piano and violin parts, and a bass line. Measure 22 continues the texture with a melodic line in the upper right.

23

Measures 23-24. Measure 23 shows a continuation of the complex texture. Measure 24 features a melodic line in the upper right and a bass line.

25

Measures 25-26. Measure 25 features a melodic line in the upper right and a bass line. Measure 26 continues the texture with a melodic line in the upper right.

27

Measures 27-28. Measure 27 features a melodic line in the upper right and a bass line. Measure 28 continues the texture with a melodic line in the upper right.

29

Measures 29-30. Measure 29 features a complex texture with multiple staves. Measure 30 continues the texture with a melodic line in the upper right.

31

Measures 31-32. Measure 31 features a melodic line in the upper right and a bass line. Measure 32 continues the texture with a melodic line in the upper right.

33

Measures 33-34. Measure 33 features a melodic line in the upper right and a bass line. Measure 34 continues the texture with a melodic line in the upper right.

35

Measures 35-37 of a musical score. The bass staff features a continuous eighth-note accompaniment. The treble staff has a melodic line with a long slur spanning measures 35 and 36, and a final chord in measure 37.

38

Measures 38-39. The bass staff continues with eighth notes. The treble staff has a melodic line with a slur from measure 38 to 39, ending with a final chord.

40

Measures 40-42. The bass staff continues with eighth notes. The treble staff has a melodic line with a slur from measure 40 to 42, ending with a final chord.

43

Measures 43-44. The bass staff continues with eighth notes. The treble staff has a melodic line with a slur from measure 43 to 44, ending with a final chord.

45

Measures 45-46. The bass staff continues with eighth notes. The treble staff has a melodic line with a slur from measure 45 to 46, ending with a final chord.

47

Measures 47-48. The bass staff continues with eighth notes. The treble staff has a melodic line with a slur from measure 47 to 48, ending with a final chord.

49

Measures 49-50. The bass staff continues with eighth notes. The treble staff has a melodic line with a slur from measure 49 to 50, ending with a final chord.

52

Measures 52-53 of a musical score. The key signature has one flat (B-flat). The music is written in a complex, multi-stemmed style, likely for a string ensemble or a large orchestra. The notation includes many beamed notes, slurs, and dynamic markings. The bass clef is visible on the left.

54

Measures 54-55 of a musical score. The key signature has one flat (B-flat). The music is written in a complex, multi-stemmed style, likely for a string ensemble or a large orchestra. The notation includes many beamed notes, slurs, and dynamic markings. The bass clef is visible on the left.

56

Measures 56-57 of a musical score. The key signature has one flat (B-flat). The music is written in a complex, multi-stemmed style, likely for a string ensemble or a large orchestra. The notation includes many beamed notes, slurs, and dynamic markings. The bass clef is visible on the left.

58

Measures 58-59 of a musical score. The key signature has one flat (B-flat). The music is written in a complex, multi-stemmed style, likely for a string ensemble or a large orchestra. The notation includes many beamed notes, slurs, and dynamic markings. The bass clef is visible on the left.

60

Measures 60-61 of a musical score. The key signature has one flat (B-flat). The music is written in a complex, multi-stemmed style, likely for a string ensemble or a large orchestra. The notation includes many beamed notes, slurs, and dynamic markings. The bass clef is visible on the left.

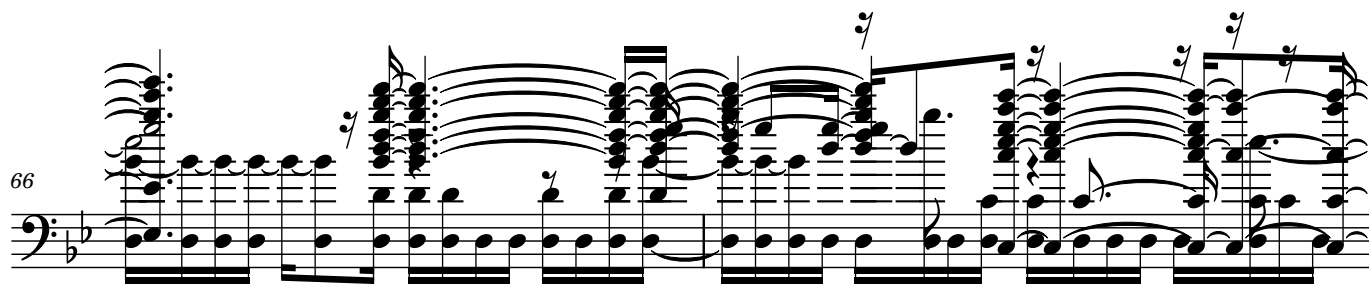
62

Measures 62-63 of a musical score. The key signature has one flat (B-flat). The music is written in a complex, multi-stemmed style, likely for a string ensemble or a large orchestra. The notation includes many beamed notes, slurs, and dynamic markings. The bass clef is visible on the left.

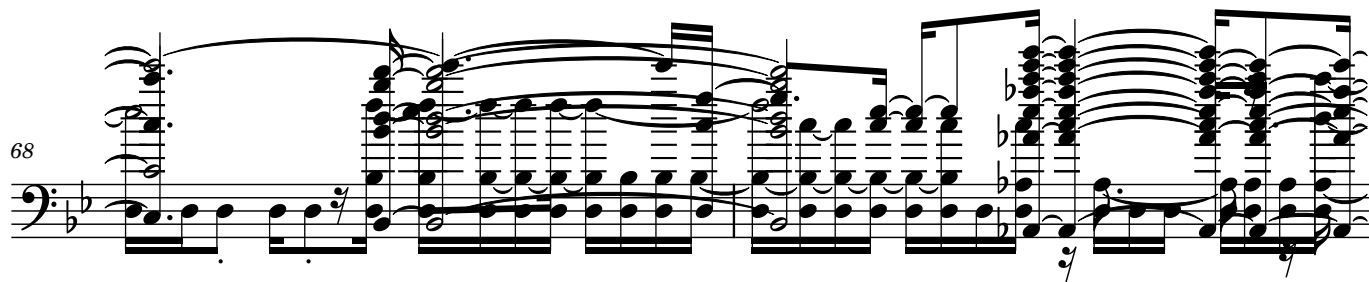
64

Measures 64-65 of a musical score. The key signature has one flat (B-flat). The music is written in a complex, multi-stemmed style, likely for a string ensemble or a large orchestra. The notation includes many beamed notes, slurs, and dynamic markings. The bass clef is visible on the left.

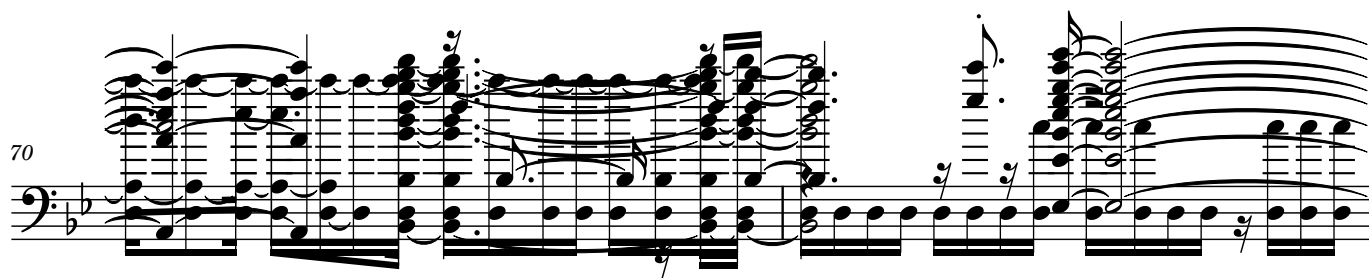
66



68



70



72

