

Woods

Composer: Mark Miller

Game: Kid Chameleon

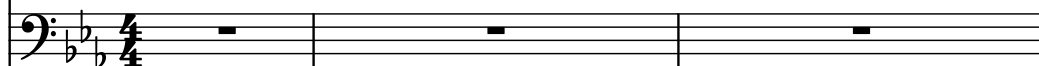
pianogame.org

♩ = 128

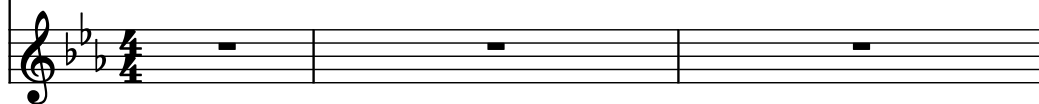
Contrabass, "Woods"



Bass Guitar, copyright



Alto Kalimba, 1992 Segá.

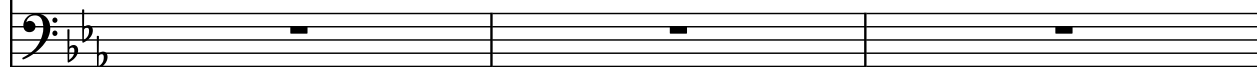


4

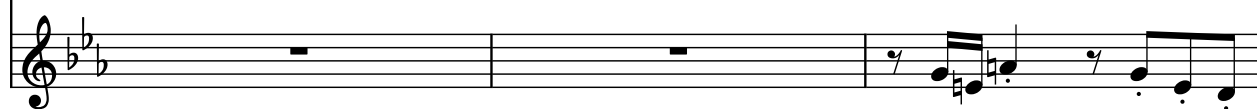
Cb.



B. Guit.



A. Kal.

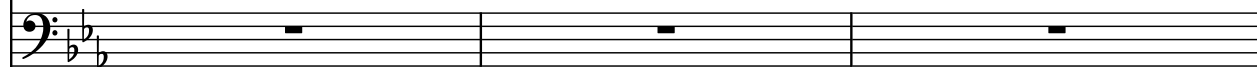


7

Cb.



B. Guit.

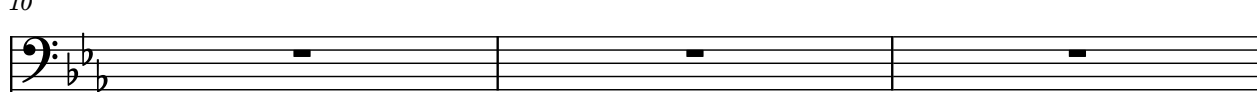


A. Kal.



10

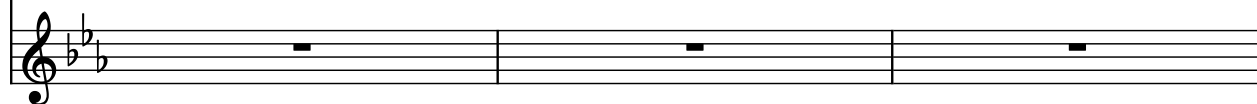
Cb.



B. Guit.

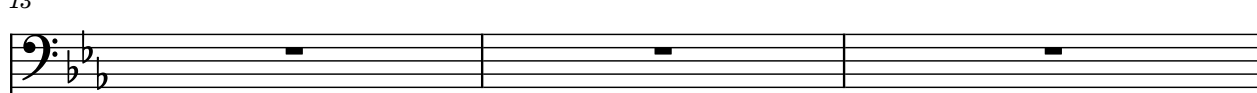


A. Kal.



13

Cb.



B. Guit.



A. Kal.



16

Cb.

B. Guit.

A. Kal.

Measures 16-18. Cb. has rests in measures 16 and 17, then a descending eighth-note scale in measure 18. B. Guit. and A. Kal. play a descending eighth-note scale in measure 16, followed by a half-note scale in measure 17, and a half-note scale in measure 18.

19

Cb.

B. Guit.

A. Kal.

Measures 19-21. Cb. plays a descending eighth-note scale in measure 19, followed by a half-note scale in measure 20, and a half-note scale in measure 21. B. Guit. and A. Kal. have rests in measures 19, 20, and 21.

22

Cb.

B. Guit.

A. Kal.

Measures 22-24. Cb. plays a descending eighth-note scale in measure 22, followed by a half-note scale in measure 23, and a half-note scale in measure 24. B. Guit. has rests in measures 22, 23, and 24. A. Kal. plays a descending eighth-note scale in measure 22, followed by a half-note scale in measure 23, and a half-note scale in measure 24.

25

Cb.

B. Guit.

A. Kal.

Measures 25-27. Cb. plays a descending eighth-note scale in measure 25, followed by a half-note scale in measure 26, and a half-note scale in measure 27. B. Guit. has rests in measures 25 and 26, then a descending eighth-note scale in measure 27. A. Kal. plays a descending eighth-note scale in measure 25, followed by a half-note scale in measure 26, and a half-note scale in measure 27.

28

Cb.

B. Guit.

A. Kal.

Measures 28-30. Cb. has rests in measures 28, 29, and 30. B. Guit. plays a descending eighth-note scale in measure 28, followed by a half-note scale in measure 29, and a half-note scale in measure 30. A. Kal. has rests in measures 28 and 29, then a descending eighth-note scale in measure 30.

31

Cb.

B. Guit.

A. Kal.

Measures 31-32. Cb. is silent. B. Guit. and A. Kal. play a rhythmic pattern in B-flat major. The pattern consists of eighth and sixteenth notes with various accidentals.

33

Cb.

B. Guit.

A. Kal.

Measures 33-35. Cb. and B. Guit. play a rhythmic pattern in B-flat major. A. Kal. is silent. The pattern consists of eighth and sixteenth notes with various accidentals.

36

Cb.

B. Guit.

A. Kal.

Measures 36-38. Cb. and B. Guit. play a rhythmic pattern in B-flat major. A. Kal. is silent. The pattern consists of eighth and sixteenth notes with various accidentals.

39

Cb.

B. Guit.

A. Kal.

Measures 39-41. Cb. and B. Guit. play a rhythmic pattern in B-flat major. A. Kal. is silent. The pattern consists of eighth and sixteenth notes with various accidentals.

42

Cb.

B. Guit.

A. Kal.

Measures 42-44. Cb. is silent. B. Guit. and A. Kal. play a rhythmic pattern in B-flat major. The pattern consists of eighth and sixteenth notes with various accidentals.

45

Cb.

B. Guit.

A. Kal.

Measures 45-47. Cb. is silent. B. Guit. and A. Kal. play a rhythmic pattern in B-flat major. The pattern consists of eighth and sixteenth notes, with some rests.

48

Cb.

B. Guit.

A. Kal.

Measures 48-50. Cb. and B. Guit. play a rhythmic pattern in B-flat major. A. Kal. is silent. The pattern consists of eighth and sixteenth notes, with some rests.

51

Cb.

B. Guit.

A. Kal.

Measures 51-53. Cb. plays a rhythmic pattern in B-flat major. B. Guit. and A. Kal. are silent. The pattern consists of eighth and sixteenth notes, with some rests.

54

Cb.

B. Guit.

A. Kal.

Measures 54-56. Cb. and A. Kal. play a rhythmic pattern in B-flat major. B. Guit. is silent. The pattern consists of eighth and sixteenth notes, with some rests.

57

Cb.

B. Guit.

A. Kal.

Measures 57-59. Cb. and B. Guit. play a rhythmic pattern in B-flat major. A. Kal. is silent. The pattern consists of eighth and sixteenth notes, with some rests.

60

Cb.

B. Guit.

A. Kal.

Measures 60-62. Cb. is silent. B. Guit. plays a continuous eighth-note pattern. A. Kal. is silent in measure 60, then enters in measure 62 with a quarter note and eighth notes.

63

Cb.

B. Guit.

A. Kal.

Measures 63-64. Cb. is silent. B. Guit. continues the eighth-note pattern. A. Kal. plays a quarter note and eighth notes in measure 63, then a quarter rest in measure 64.

65

Cb.

B. Guit.

A. Kal.

Measures 65-67. Cb. enters in measure 65 with a quarter note and eighth notes. B. Guit. continues the eighth-note pattern. A. Kal. plays a quarter note and eighth notes in measure 65, then a quarter rest in measure 66 and 67.

68

Cb.

B. Guit.

A. Kal.

Measures 68-70. Cb. continues the eighth-note pattern. B. Guit. is silent. A. Kal. is silent in measure 68, then enters in measure 70 with a quarter note and eighth notes.

71

Cb.

B. Guit.

A. Kal.

Measures 71-73. Cb. continues the eighth-note pattern. B. Guit. is silent. A. Kal. plays a quarter note and eighth notes in measure 71, then a quarter rest in measure 72, then a quarter note and eighth notes in measure 73.