

Winter

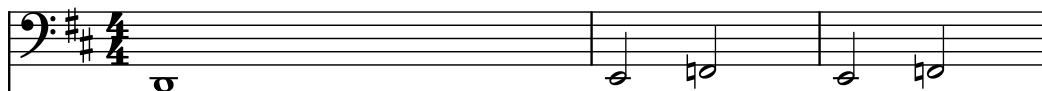
Composer: Keita Hoshi

Game: Bonk's Revenge

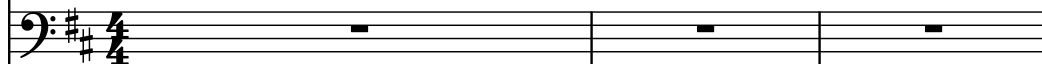
pianogame.org

♩ = 100

Bassoon, Track 1



Baryton, Track 2

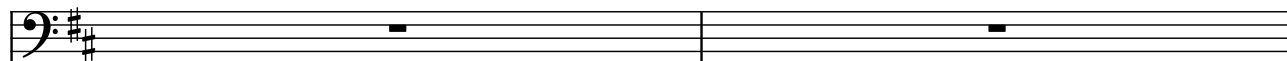


Ondes Martenot, Track 3



4

Bsn.



Bary.

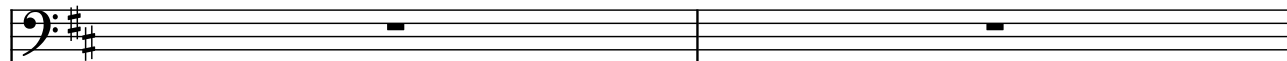


O.M.

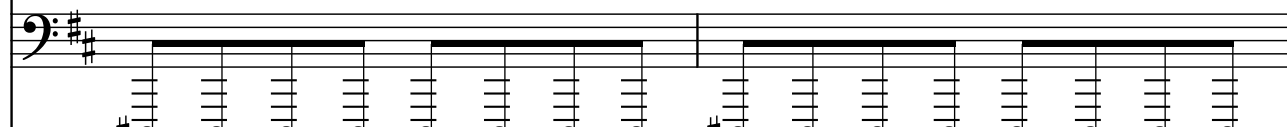


6

Bsn.



Bary.

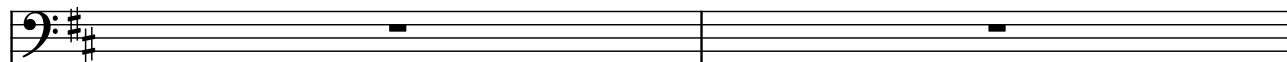


O.M.



8

Bsn.



Bary.



O.M.



10

Bsn.

Bary.

O.M.

Measures 10-11. Bsn. is silent. Bary. and O.M. play a rhythmic pattern of eighth notes in D major. Bary. starts on G2, O.M. on D4.

12

Bsn.

Bary.

O.M.

Measures 12-14. Bsn. plays a half note on G2 in measure 12, then eighth notes in measures 13-14. Bary. and O.M. are silent in measure 12, then play eighth notes in measures 13-14.

15

Bsn.

Bary.

O.M.

Measures 15-16. Bsn. is silent. Bary. and O.M. play a rhythmic pattern of eighth notes in D major. Bary. starts on G2, O.M. on D4.

17

Bsn.

Bary.

O.M.

Measures 17-18. Bsn. is silent. Bary. and O.M. play a rhythmic pattern of eighth notes in D major. Bary. starts on G2, O.M. on D4.

19

Bsn.

Bary.

O.M.

Measures 19-20. The Bsn. part has whole rests. The Bary. part has a descending eighth-note scale from G2 to C2. The O.M. part has a descending eighth-note scale from G4 to C3.

21

Bsn.

Bary.

O.M.

Measures 21-22. The Bsn. part has whole rests. The Bary. part has a descending eighth-note scale from G2 to C2. The O.M. part has a descending eighth-note scale from G4 to C3.