

Title Theme

Composer: Josh Mancell

Game: Crash Bash

pianogame.org

♩ = 160

16

11

22

30

39

47

System 1 (Measures 47-57): The piece is in a key with three flats (B-flat, E-flat, A-flat) and a common time signature. The right hand (treble clef) has whole rests for measures 47-56 and a half note chord in measure 57. The left hand (bass clef) plays a continuous eighth-note arpeggiated pattern from measure 47 to 56, followed by a half note chord in measure 57.

58

System 2 (Measures 58-68): The right hand (treble clef) features a melodic line with eighth and sixteenth notes, including a triplet in measure 58 and a half note in measure 68. The left hand (bass clef) plays a complex accompaniment with chords and moving lines, including a triplet in measure 58 and a half note in measure 68.

69

System 3 (Measures 69-79): The right hand (treble clef) continues the melodic line with eighth and sixteenth notes. The left hand (bass clef) provides a steady accompaniment with chords and moving lines, including a triplet in measure 69 and a half note in measure 79.

80

System 4 (Measures 80-90): The right hand (treble clef) has whole rests for measures 80-89 and a half note chord in measure 90. The left hand (bass clef) plays a continuous eighth-note arpeggiated pattern from measure 80 to 89, followed by a half note chord in measure 90.

91

System 5 (Measures 91-100): The right hand (treble clef) features a melodic line with eighth and sixteenth notes, including a triplet in measure 91 and a half note in measure 100. The left hand (bass clef) plays a complex accompaniment with chords and moving lines, including a triplet in measure 91 and a half note in measure 100.

102



System 102-111: This system contains ten measures. The treble clef staff begins with a repeat sign, followed by a half note G4, a quarter note A4, and a half note B4. The bass clef staff has a whole rest for the first two measures, then enters with a half note G3, a quarter note A3, and a half note B3. The system concludes with a complex chordal texture in the final measures.

112



System 112-121: This system contains ten measures. The treble clef staff features a half note G4, a quarter note A4, and a half note B4. The bass clef staff has a whole rest for the first two measures, then enters with a half note G3, a quarter note A3, and a half note B3. The system concludes with a complex chordal texture in the final measures.

122



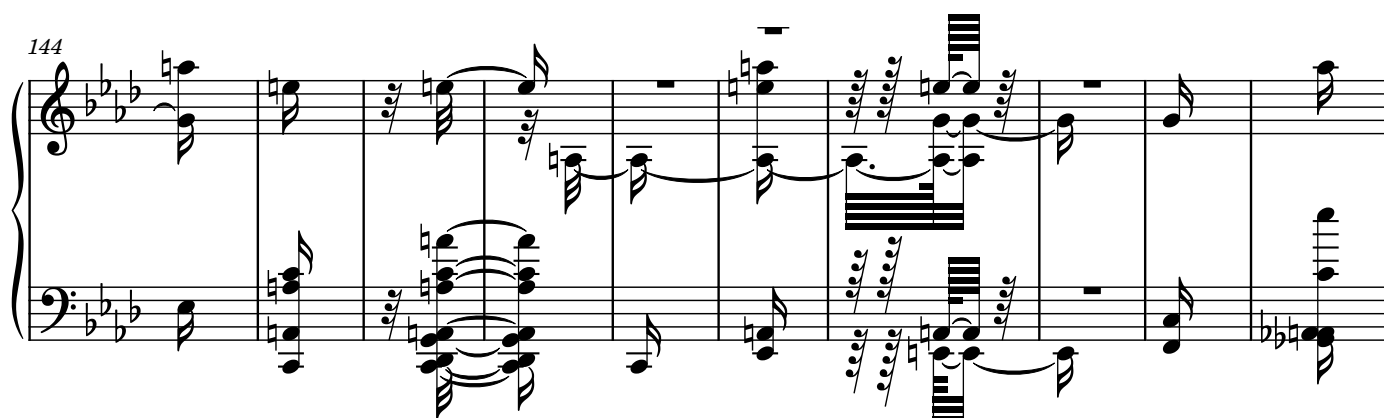
System 122-132: This system contains eleven measures. The treble clef staff begins with a repeat sign, followed by a half note G4, a quarter note A4, and a half note B4. The bass clef staff has a whole rest for the first two measures, then enters with a half note G3, a quarter note A3, and a half note B3. The system concludes with a complex chordal texture in the final measures.

133



System 133-143: This system contains eleven measures. The treble clef staff begins with a repeat sign, followed by a half note G4, a quarter note A4, and a half note B4. The bass clef staff has a whole rest for the first two measures, then enters with a half note G3, a quarter note A3, and a half note B3. The system concludes with a complex chordal texture in the final measures.

144



System 144-153: This system contains ten measures. The treble clef staff begins with a repeat sign, followed by a half note G4, a quarter note A4, and a half note B4. The bass clef staff has a whole rest for the first two measures, then enters with a half note G3, a quarter note A3, and a half note B3. The system concludes with a complex chordal texture in the final measures.

154

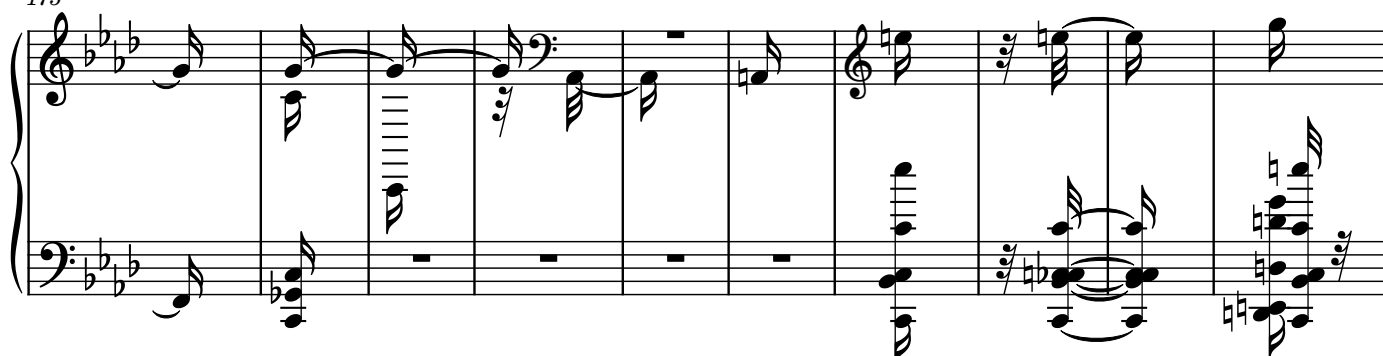


System 154-163: This system contains ten measures. The treble clef staff begins with a repeat sign, followed by a half note G4, a quarter note A4, and a half note B4. The bass clef staff has a whole rest for the first two measures, then enters with a half note G3, a quarter note A3, and a half note B3. The system concludes with a complex chordal texture in the final measures.

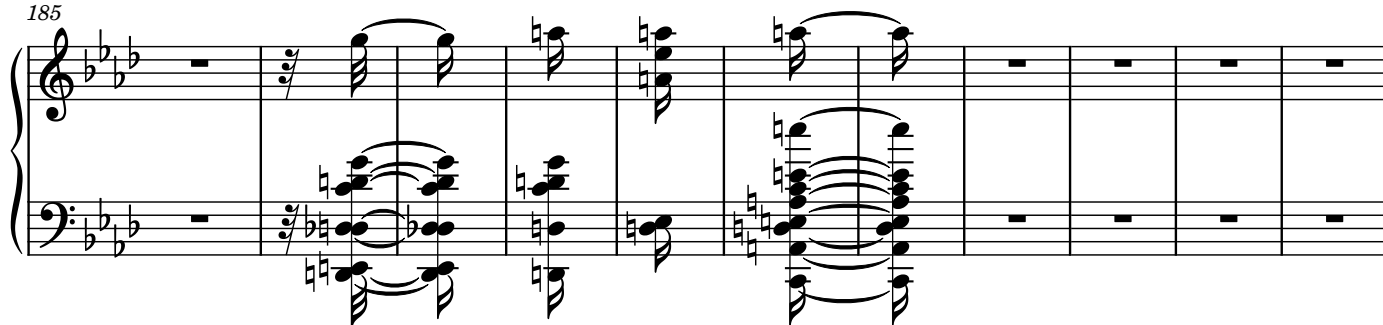
164



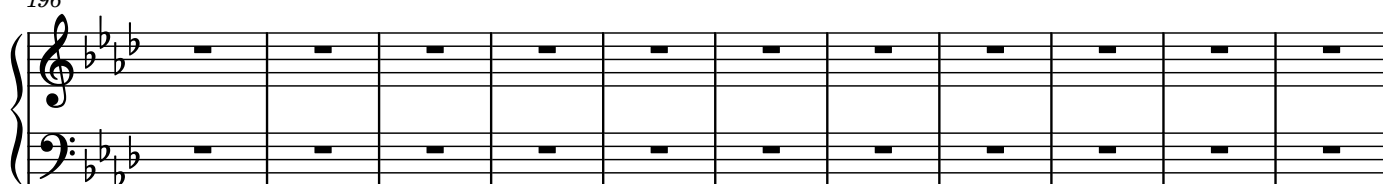
175



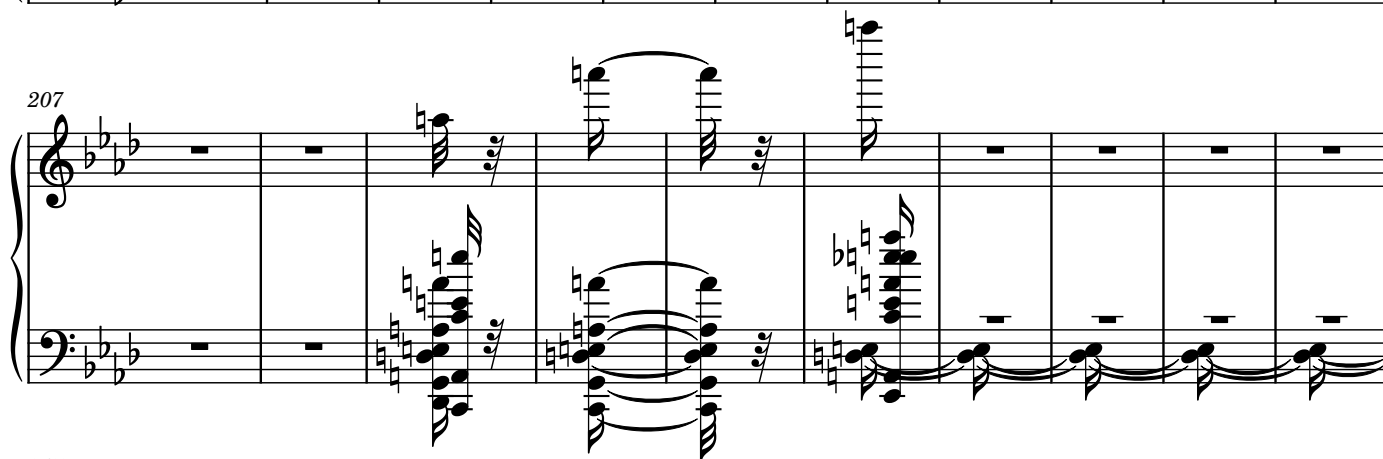
185



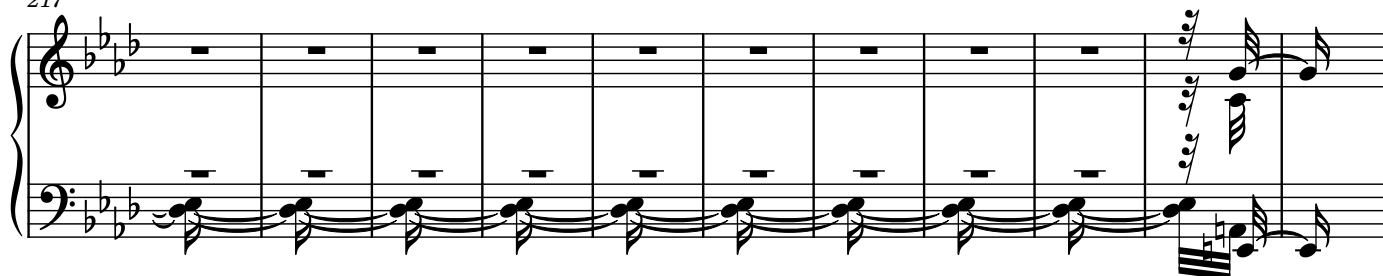
196



207



217



228

Measures 228-238. The music is in a key with three flats (B-flat, E-flat, A-flat) and a common time signature. The right hand features complex chords and arpeggios, while the left hand plays a steady eighth-note accompaniment. Measure 238 ends with a double bar line.

239

Measures 239-249. The right hand continues with complex chords and arpeggios, and the left hand maintains the eighth-note accompaniment. Measure 249 ends with a double bar line.

250

Measures 250-259. The right hand features complex chords and arpeggios, and the left hand plays a steady eighth-note accompaniment. Measure 259 ends with a double bar line.

260

Measures 260-270. The right hand features a series of chords, and the left hand plays a steady eighth-note accompaniment. Measure 270 ends with a double bar line.

271

Measures 271-281. The right hand features a series of chords, and the left hand plays a steady eighth-note accompaniment. Measure 281 ends with a double bar line.

282

Measures 282-290 of a musical score in B-flat major (three flats). The system consists of two staves. Measures 282-283 show complex, rapid sixteenth-note passages in both hands. Measures 284-285 are whole rests. Measures 286-287 feature dense, rapid sixteenth-note chords in the right hand. Measures 288-290 show a more melodic right hand with eighth and sixteenth notes, while the left hand continues with rapid sixteenth-note patterns. Measure 290 ends with a double bar line.

290

Measures 290-301 of a musical score in B-flat major. The system consists of two staves. Measures 290-291 are whole rests. Measures 292-293 show a melodic right hand with eighth notes and a left hand with eighth-note patterns. Measures 294-295 feature a right hand with a long, flowing sixteenth-note slur and a left hand with eighth-note patterns. Measures 296-297 show a right hand with a long, flowing sixteenth-note slur and a left hand with eighth-note patterns. Measures 298-301 show a right hand with a long, flowing sixteenth-note slur and a left hand with eighth-note patterns. Measure 301 ends with a double bar line.

301

Measures 301-312 of a musical score in B-flat major. The system consists of two staves. Measures 301-302 show a right hand with eighth-note patterns and a left hand with eighth-note patterns. Measures 303-304 show a right hand with eighth-note patterns and a left hand with eighth-note patterns. Measures 305-306 show a right hand with eighth-note patterns and a left hand with eighth-note patterns. Measures 307-308 show a right hand with eighth-note patterns and a left hand with eighth-note patterns. Measures 309-310 show a right hand with eighth-note patterns and a left hand with eighth-note patterns. Measures 311-312 show a right hand with eighth-note patterns and a left hand with eighth-note patterns. Measure 312 ends with a double bar line.

312

Measures 312-323 of a musical score in B-flat major. The system consists of two staves. Measures 312-313 show a right hand with eighth-note patterns and a left hand with eighth-note patterns. Measures 314-315 show a right hand with eighth-note patterns and a left hand with eighth-note patterns. Measures 316-317 show a right hand with eighth-note patterns and a left hand with eighth-note patterns. Measures 318-319 show a right hand with eighth-note patterns and a left hand with eighth-note patterns. Measures 320-321 show a right hand with eighth-note patterns and a left hand with eighth-note patterns. Measures 322-323 show a right hand with eighth-note patterns and a left hand with eighth-note patterns. Measure 323 ends with a double bar line.

323

Measures 323-334 of a musical score in B-flat major. The system consists of two staves. Measures 323-324 show a right hand with eighth-note patterns and a left hand with eighth-note patterns. Measures 325-326 show a right hand with eighth-note patterns and a left hand with eighth-note patterns. Measures 327-328 show a right hand with eighth-note patterns and a left hand with eighth-note patterns. Measures 329-330 show a right hand with eighth-note patterns and a left hand with eighth-note patterns. Measures 331-332 show a right hand with eighth-note patterns and a left hand with eighth-note patterns. Measures 333-334 show a right hand with eighth-note patterns and a left hand with eighth-note patterns. Measure 334 ends with a double bar line.

334

345

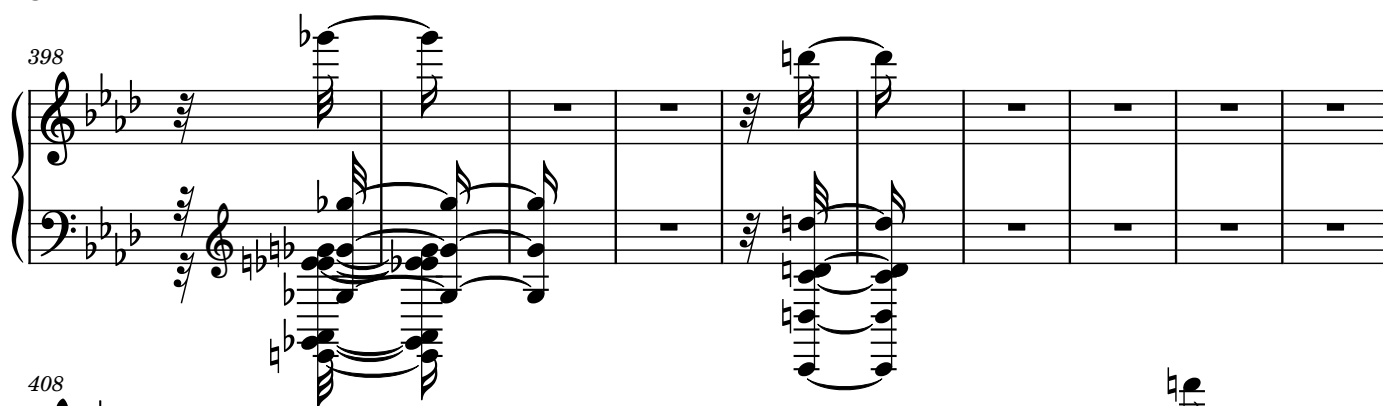
356

367

378

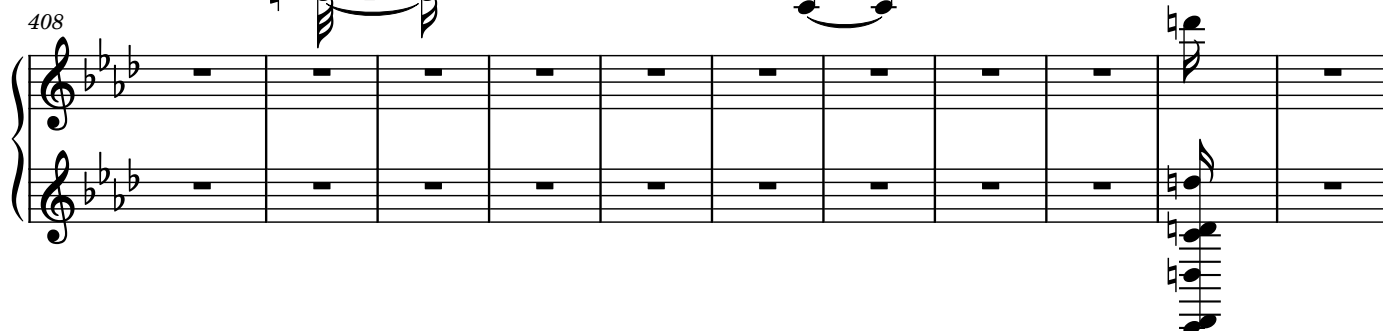
389

398



This system contains measures 398 through 407. It features a complex texture with multiple staves. The upper staves have treble clefs and a key signature of three flats. The lower staves have a bass clef and a key signature of three flats. The music includes various rhythmic values, including eighth and sixteenth notes, and rests. There are also some unusual notation elements, such as a double bar line with a repeat sign and a key signature change to two flats in the lower staves.

408



This system contains measures 408 through 418. It features a complex texture with multiple staves. The upper staves have treble clefs and a key signature of three flats. The lower staves have a bass clef and a key signature of three flats. The music includes various rhythmic values, including eighth and sixteenth notes, and rests. There are also some unusual notation elements, such as a double bar line with a repeat sign and a key signature change to two flats in the lower staves.

419



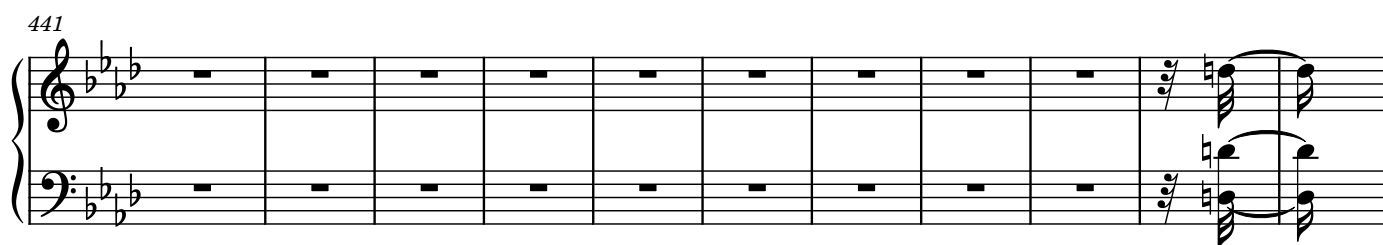
This system contains measures 419 through 429. It features a complex texture with multiple staves. The upper staves have treble clefs and a key signature of three flats. The lower staves have a bass clef and a key signature of three flats. The music includes various rhythmic values, including eighth and sixteenth notes, and rests. There are also some unusual notation elements, such as a double bar line with a repeat sign and a key signature change to two flats in the lower staves.

430



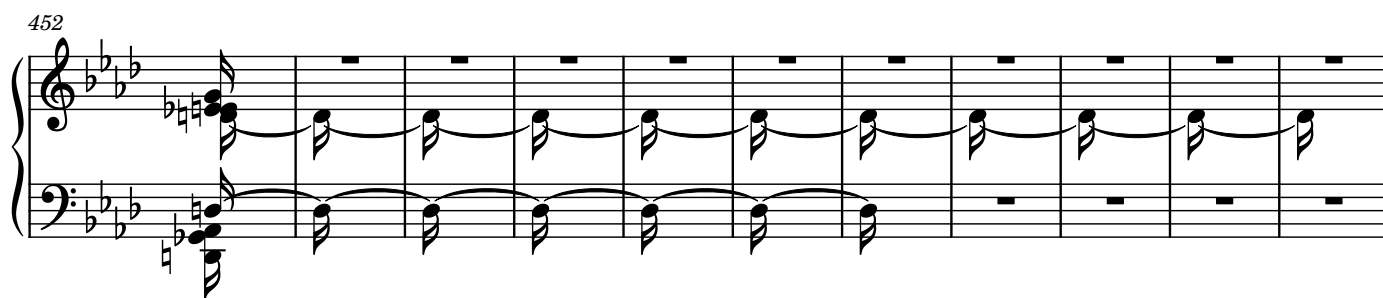
This system contains measures 430 through 440. It features a complex texture with multiple staves. The upper staves have treble clefs and a key signature of three flats. The lower staves have a bass clef and a key signature of three flats. The music includes various rhythmic values, including eighth and sixteenth notes, and rests. There are also some unusual notation elements, such as a double bar line with a repeat sign and a key signature change to two flats in the lower staves.

441



This system contains measures 441 through 451. It features a complex texture with multiple staves. The upper staves have treble clefs and a key signature of three flats. The lower staves have a bass clef and a key signature of three flats. The music includes various rhythmic values, including eighth and sixteenth notes, and rests. There are also some unusual notation elements, such as a double bar line with a repeat sign and a key signature change to two flats in the lower staves.

452



This system contains measures 452 through 462. It features a complex texture with multiple staves. The upper staves have treble clefs and a key signature of three flats. The lower staves have a bass clef and a key signature of three flats. The music includes various rhythmic values, including eighth and sixteenth notes, and rests. There are also some unusual notation elements, such as a double bar line with a repeat sign and a key signature change to two flats in the lower staves.

463

Measures 463-473. The piece is in a key with three flats (B-flat major or D-flat minor). Measures 463-473 are mostly rests, with some bass line activity in measures 464, 465, 466, 467, 468, 469, 470, 471, 472, and 473. Measure 473 ends with a treble clef change and a final chord.

474

Measures 474-484. Measures 474-484 feature a complex texture with many beamed sixteenth and thirty-second notes in both staves, creating a dense, rhythmic pattern. Measure 484 ends with a treble clef change and a final chord.

485

Measures 485-494. Measures 485-494 are mostly rests, with some bass line activity in measures 485, 486, 487, 488, 489, 490, 491, 492, 493, and 494. Measure 494 ends with a treble clef change and a final chord.

495

Measures 495-505. Measures 495-505 feature a complex texture with many beamed sixteenth and thirty-second notes in both staves, creating a dense, rhythmic pattern. Measure 505 ends with a treble clef change and a final chord.

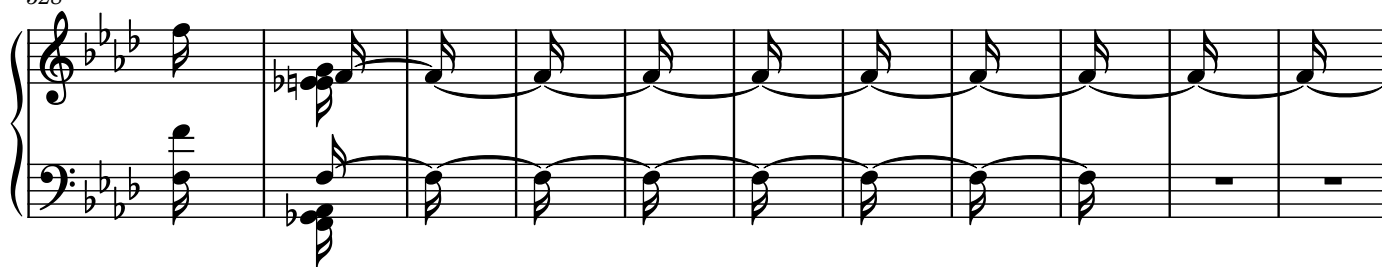
506

Measures 506-516. Measures 506-516 are mostly rests, with some bass line activity in measures 506, 507, 508, 509, 510, 511, 512, 513, 514, 515, and 516. Measure 516 ends with a treble clef change and a final chord.

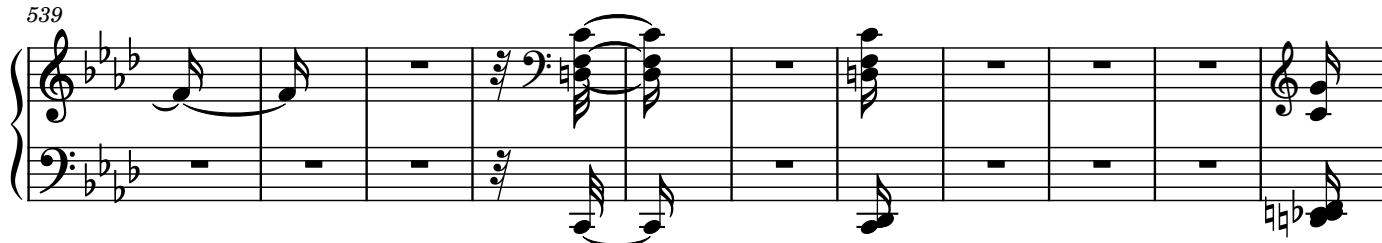
517

Measures 517-526. Measures 517-526 are mostly rests, with some bass line activity in measures 517, 518, 519, 520, 521, 522, 523, 524, 525, and 526. Measure 526 ends with a treble clef change and a final chord.

528



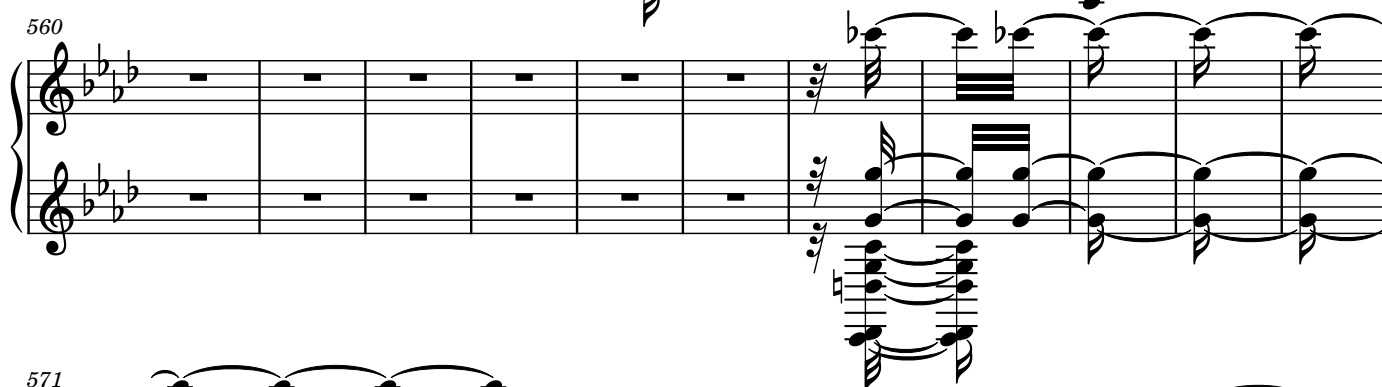
539



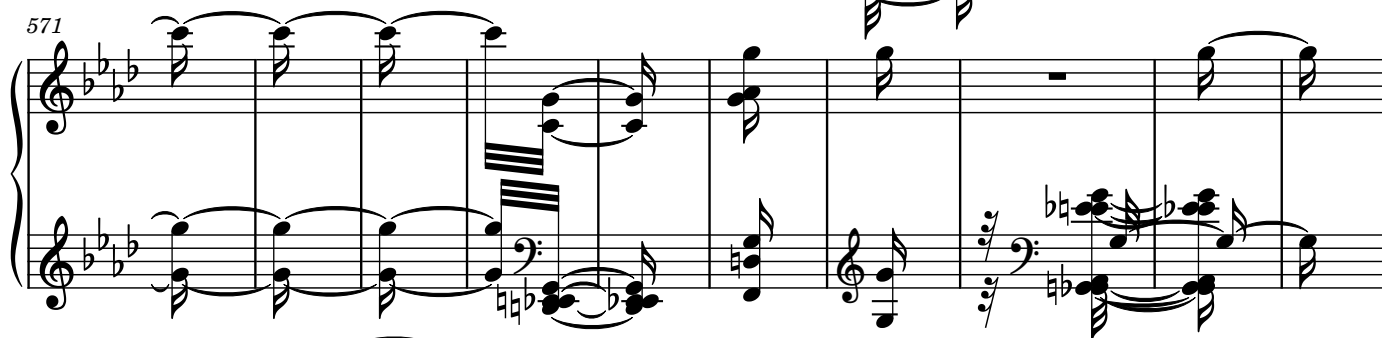
550



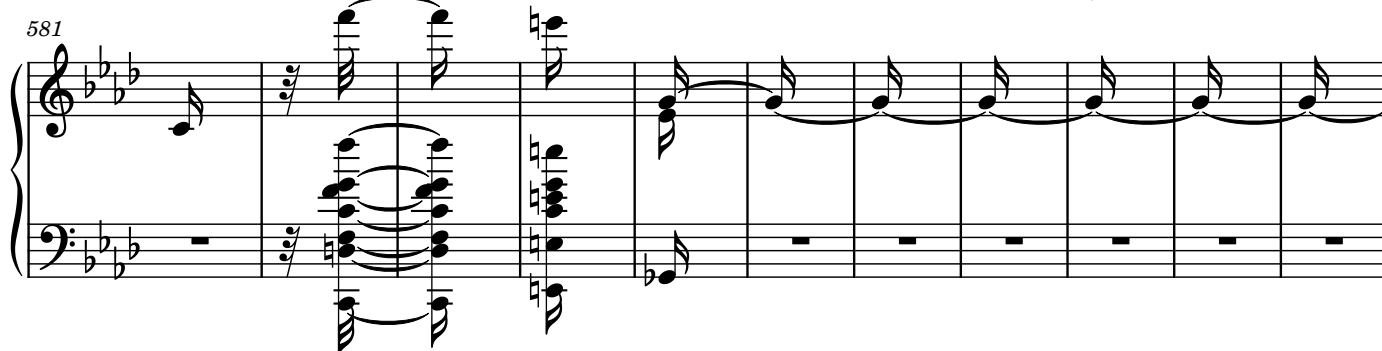
560



571



581



592

System 592-602: Treble and bass staves. Treble staff has a melodic line with eighth and quarter notes, some beamed together. Bass staff has a bass line with eighth and quarter notes, some beamed together. The system ends with a double bar line.

603

System 603-613: Treble and bass staves. Treble staff has a melodic line with eighth and quarter notes, some beamed together. Bass staff has a bass line with eighth and quarter notes, some beamed together. The system ends with a double bar line.

614

System 614-624: Treble and bass staves. Treble staff has a melodic line with eighth and quarter notes, some beamed together. Bass staff has a bass line with eighth and quarter notes, some beamed together. The system ends with a double bar line.

625

System 625-634: Treble and bass staves. Treble staff has a melodic line with eighth and quarter notes, some beamed together. Bass staff has a bass line with eighth and quarter notes, some beamed together. The system ends with a double bar line.

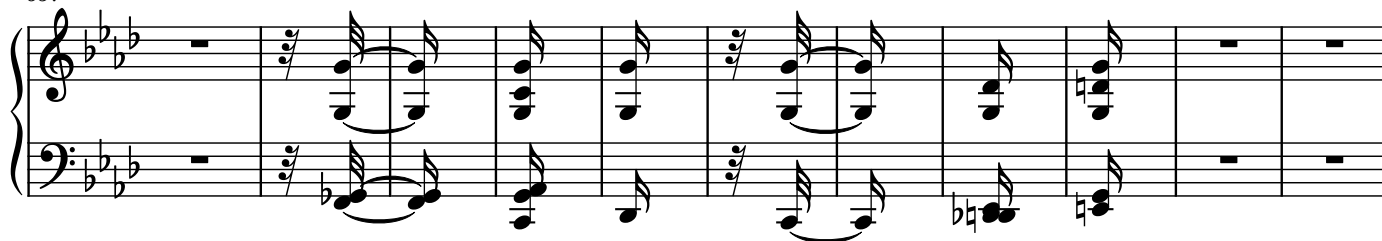
635

System 635-645: Treble and bass staves. Treble staff has a melodic line with eighth and quarter notes, some beamed together. Bass staff has a bass line with eighth and quarter notes, some beamed together. The system ends with a double bar line.

646

System 646-655: Treble and bass staves. Treble staff has a melodic line with eighth and quarter notes, some beamed together. Bass staff has a bass line with eighth and quarter notes, some beamed together. The system ends with a double bar line.

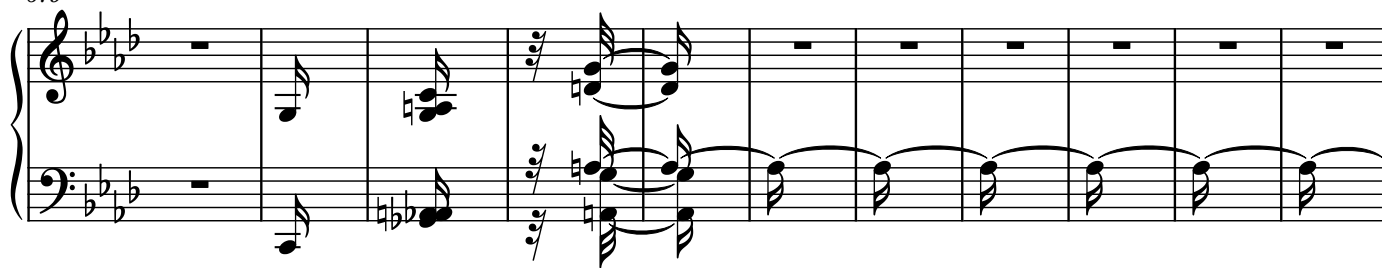
657



668



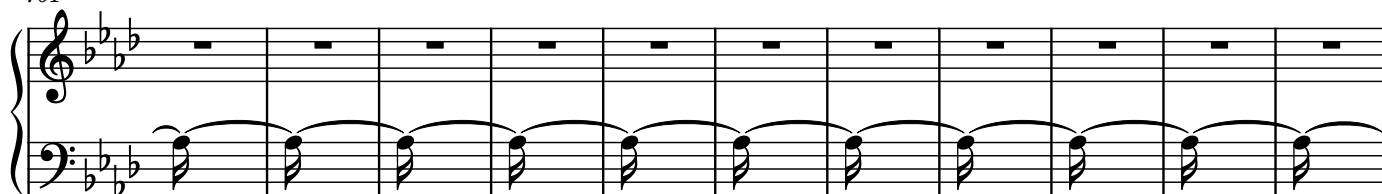
679



690



701



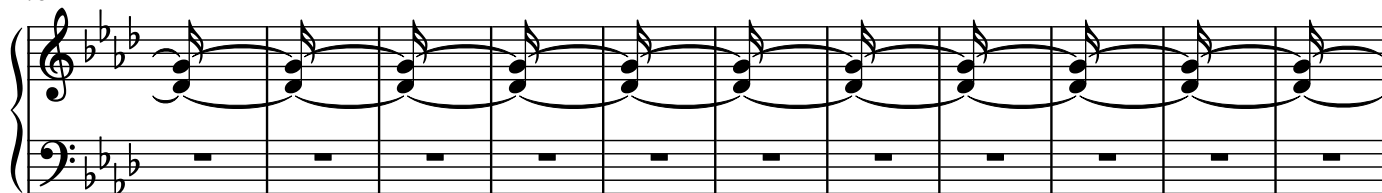
712



723



734



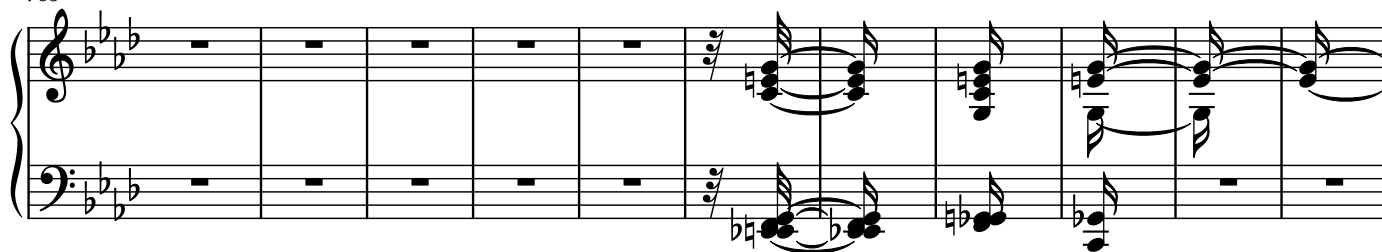
745



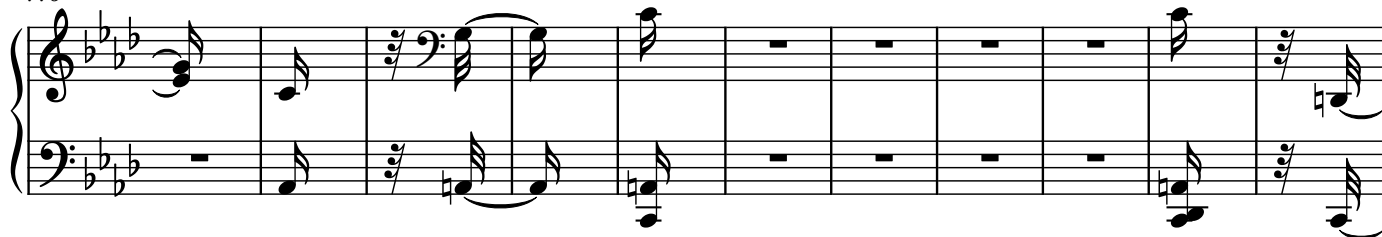
755

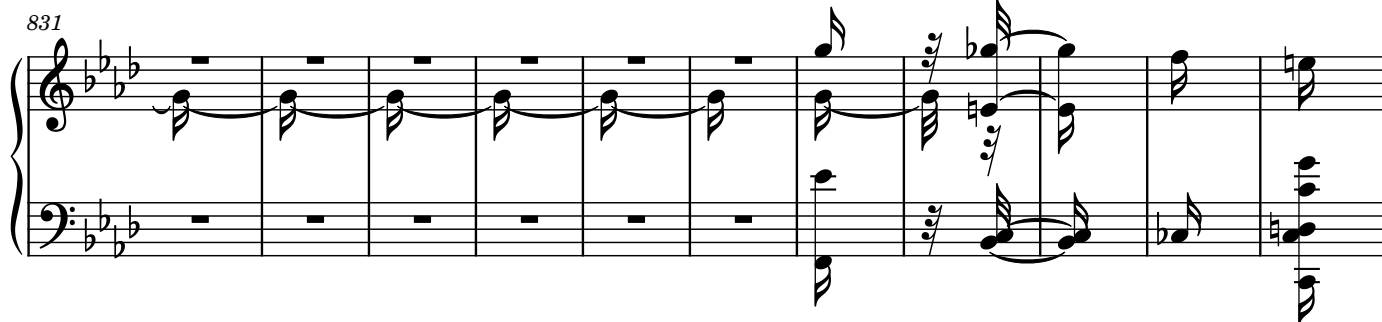
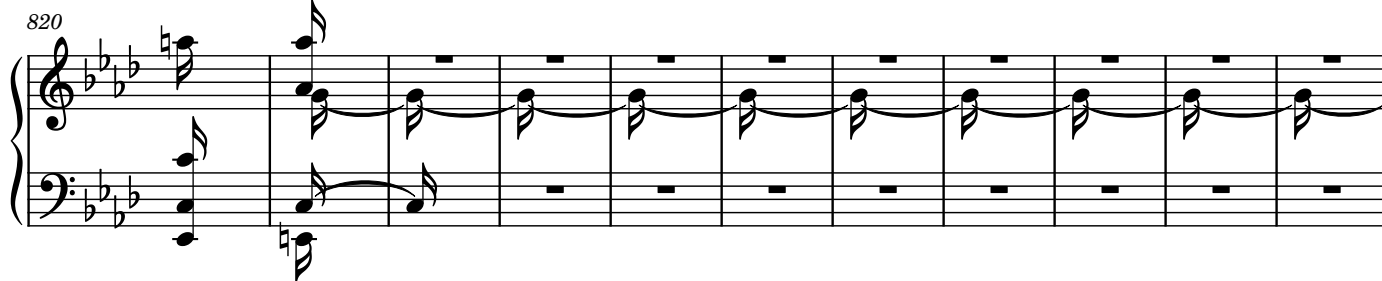
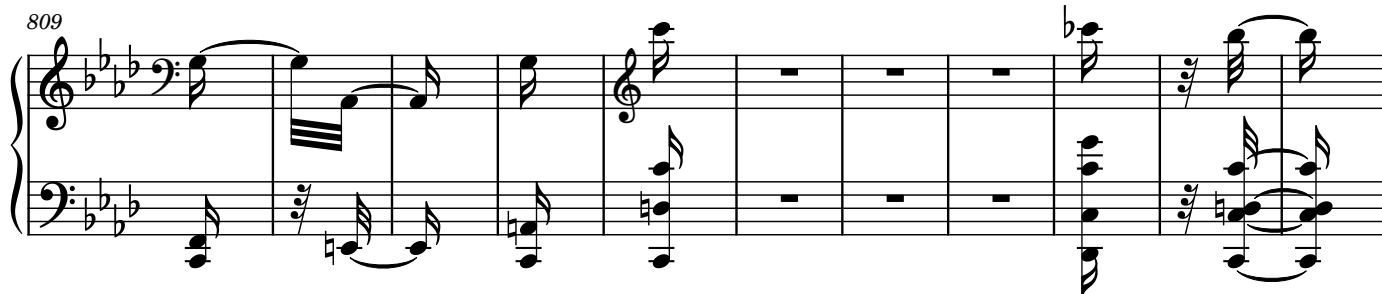
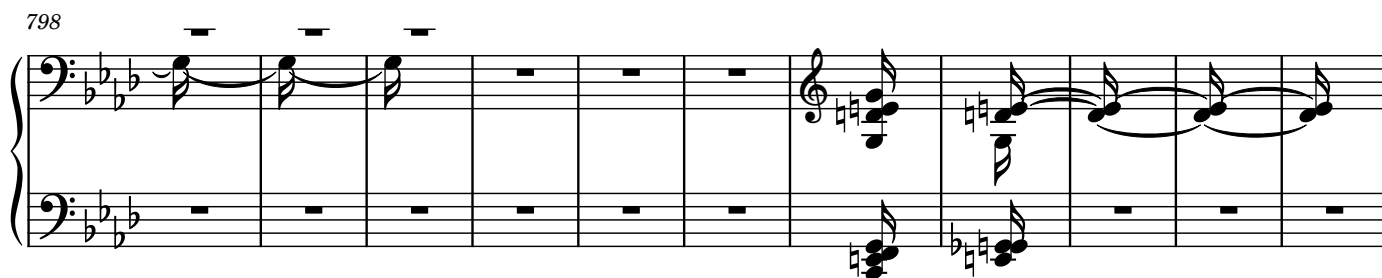
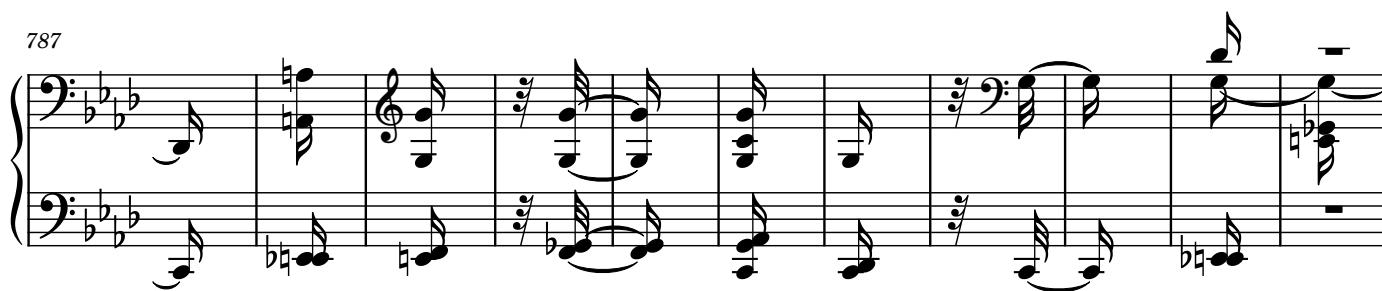


765



776

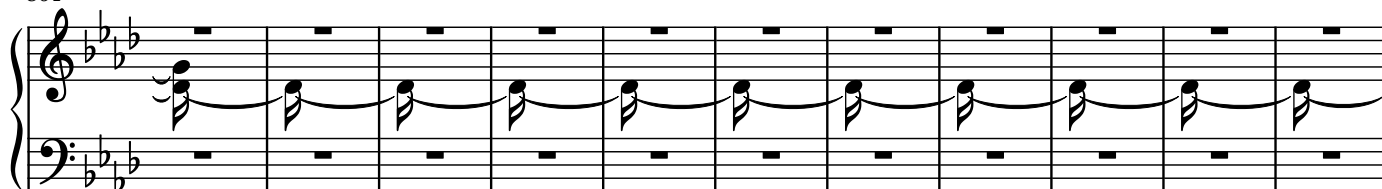




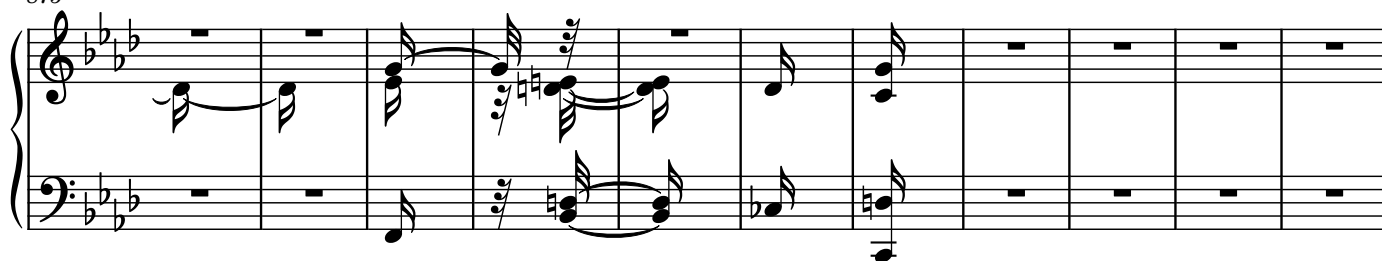
853



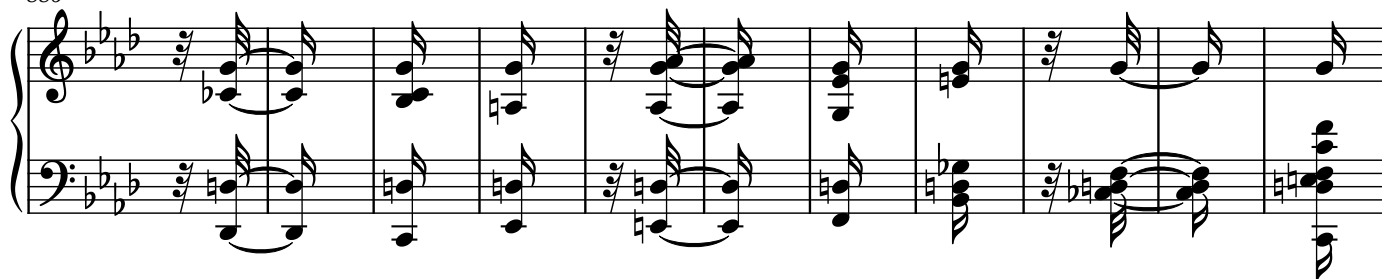
864



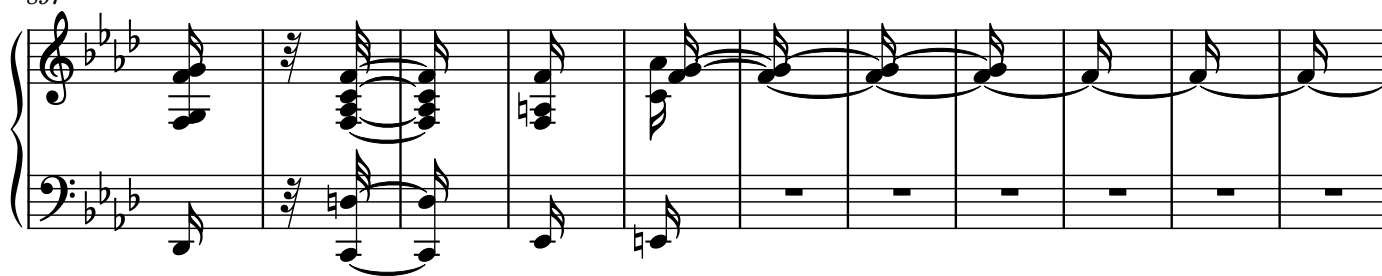
875



886



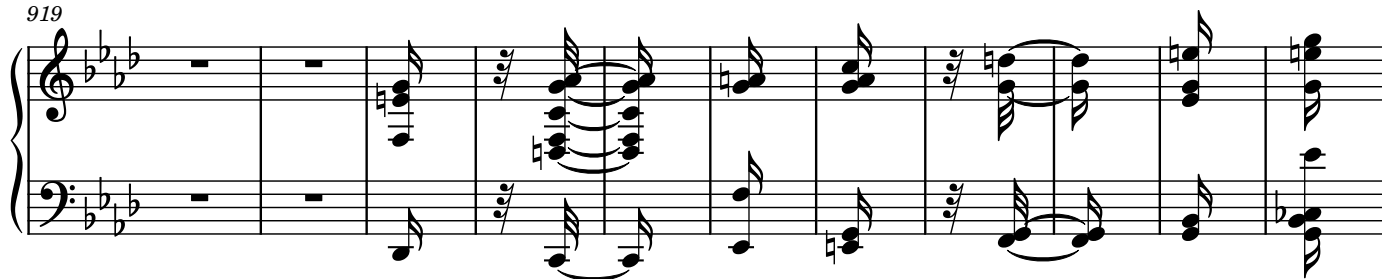
897



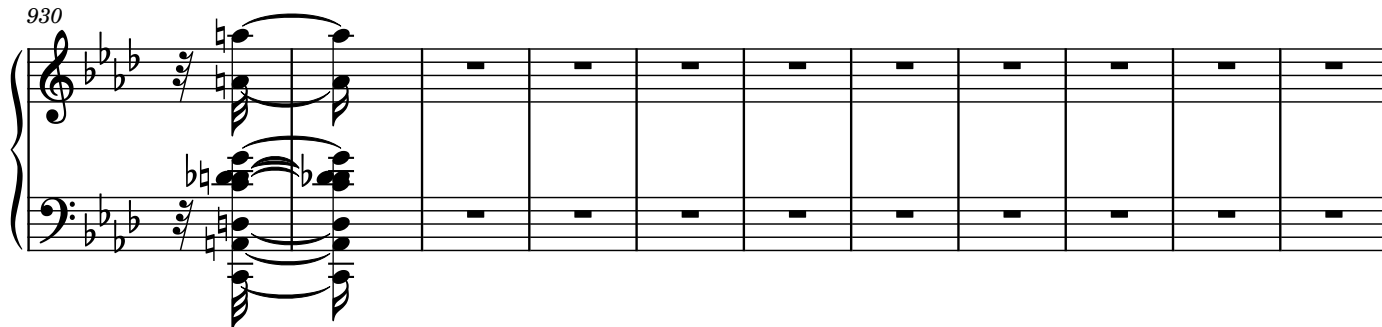
908



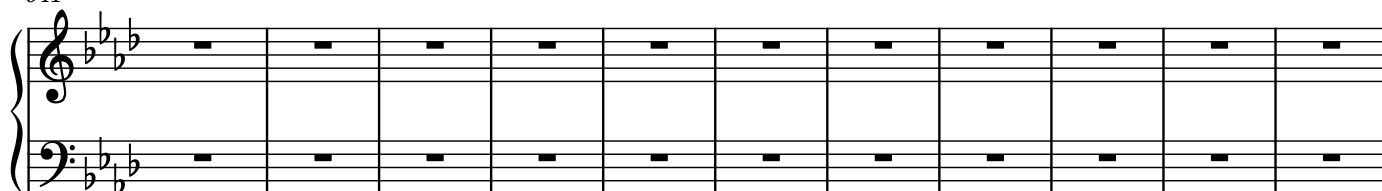
919



930



941



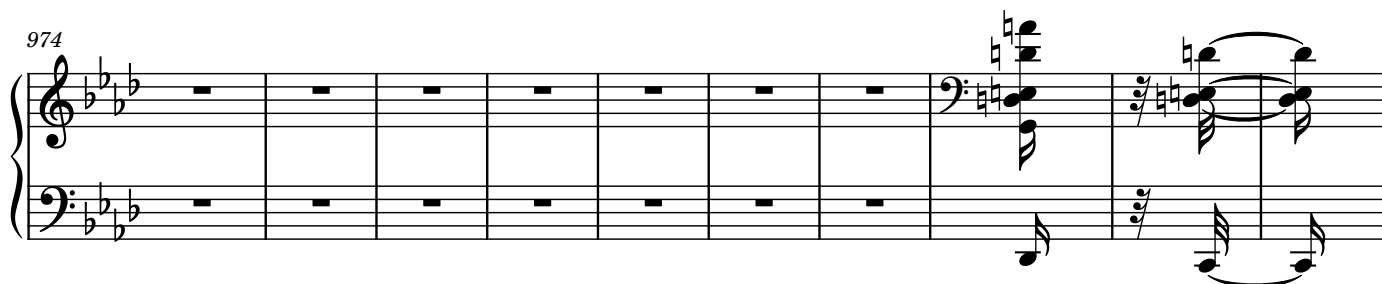
952



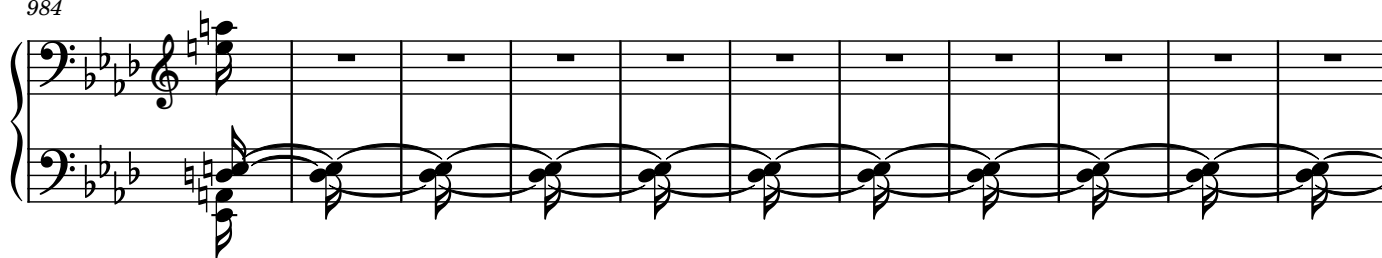
963



974



984



995



1006



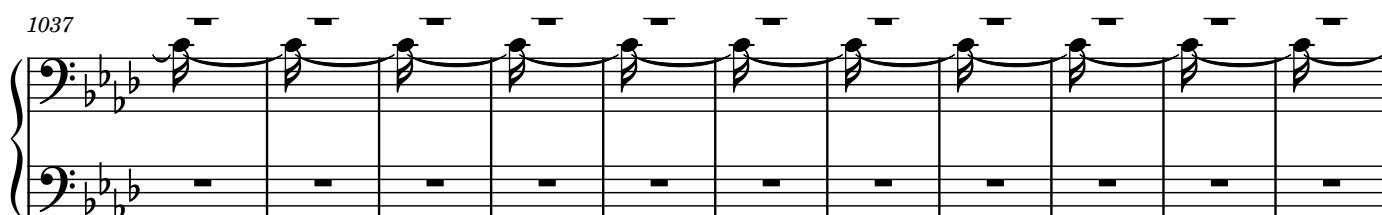
1017



1027



1037



1048

System 1048: A piano accompaniment system in B-flat major (two flats). The right hand features a melodic line with eighth and sixteenth notes, while the left hand provides a harmonic foundation with chords and moving bass lines. The system consists of eight measures.

1058

System 1058: Continuation of the piano accompaniment. This system includes a complex passage with rapid sixteenth-note runs in both hands, followed by a more melodic section. It spans eight measures.

1068

System 1068: Continuation of the piano accompaniment. The right hand has a more active melodic role with eighth-note patterns, while the left hand maintains a steady harmonic accompaniment. It spans eight measures.

1078

System 1078: Continuation of the piano accompaniment. This system features a prominent melodic line in the right hand with various ornaments and a supporting bass line in the left hand. It spans eight measures.

1088

System 1088: Continuation of the piano accompaniment. The system concludes with a series of chords and a final melodic flourish in the right hand. It spans eight measures.

