

Boss 3 - "Suitable Opponent"

Composer: Jun Senoue

Game: Sonic Adventure 2

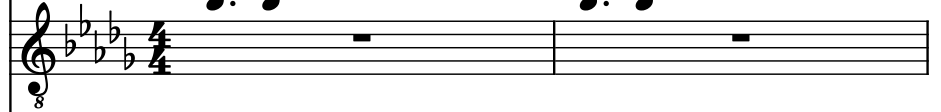
pianogame.org

♩ = 120

Electric Guitar, Distortion Guitar



Electric Guitar, Overdriven Guitar

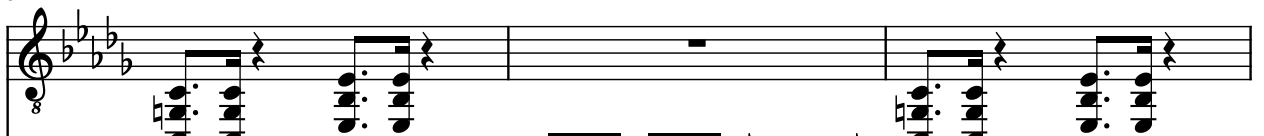


Electric Guitar, Distortion Guitar



3

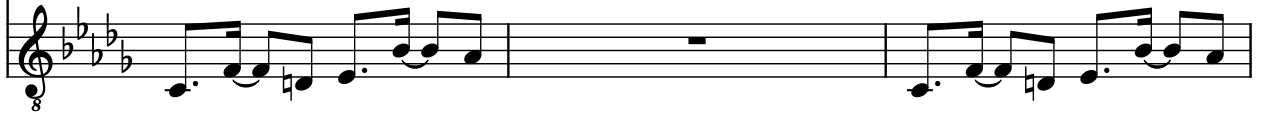
El. Guit.



El. Guit.



El. Guit.

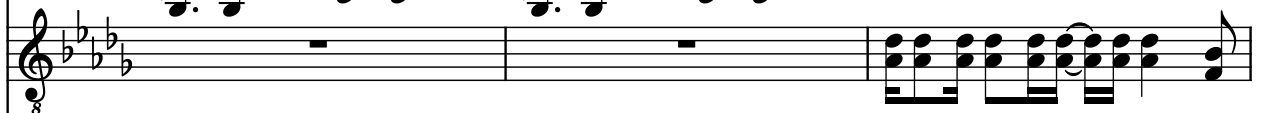


6

El. Guit.



El. Guit.

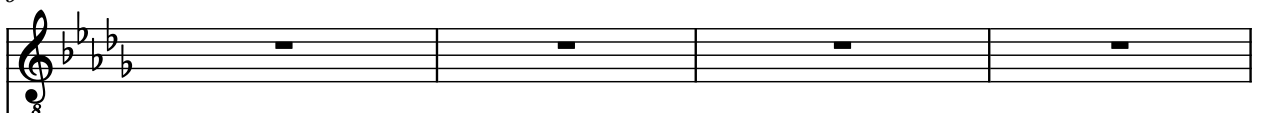


El. Guit.



9

El. Guit.



El. Guit.



El. Guit.



13

El. Guit.

Three staves of music for electric guitar. The key signature has four flats (B-flat, E-flat, A-flat, D-flat). The first staff has a whole rest in every measure. The second staff has whole rests in measures 13 and 14, followed by eighth-note pairs in measures 15 and 16. The third staff features a complex rhythmic pattern of eighth and sixteenth notes with ties, including a triplet in measure 15.

17

El. Guit.

Three staves of music for electric guitar. The first staff has whole rests in measures 17 and 18, followed by eighth-note pairs in measures 19 and 20. The second staff has eighth-note pairs in measures 17 and 18, followed by whole rests in measures 19 and 20. The third staff has eighth-note pairs in measures 17 and 18, followed by whole rests in measures 19 and 20.

21

El. Guit.

Three staves of music for electric guitar. The first staff has eighth-note pairs in measures 21 and 22, followed by eighth-note pairs in measures 23 and 24. The second and third staves have whole rests in all four measures.

25

El. Guit.

Three staves of music for electric guitar. The first staff has eighth-note pairs in measures 25 and 26, followed by eighth-note pairs in measures 27 and 28. The second staff has whole rests in all four measures. The third staff has eighth-note pairs in measures 25 and 26, followed by eighth-note pairs in measures 27 and 28.

29

El. Guit.

Three staves of musical notation for measures 29-31. The key signature has four flats (B-flat, E-flat, A-flat, D-flat). The first staff (labeled 'El. Guit.') has a treble clef and a '8' below it. It contains chords in measures 29 and 30, and a single note in measure 31. The second staff has a treble clef and a '8' below it. It contains a single note in measure 29, a chord in measure 30, and a single note in measure 31. The third staff has a treble clef and a '8' below it. It contains a single note in measure 29, a chord in measure 30, and a single note in measure 31.

32

El. Guit.

Three staves of musical notation for measures 32-34. The key signature has four flats. The first staff (labeled 'El. Guit.') has a treble clef and a '8' below it. It contains chords in measures 32 and 33, and a single note in measure 34. The second staff has a treble clef and a '8' below it. It contains a single note in measure 32, a chord in measure 33, and a single note in measure 34. The third staff has a treble clef and a '8' below it. It contains a single note in measure 32, a chord in measure 33, and a single note in measure 34.

35

El. Guit.

Three staves of musical notation for measures 35-38. The key signature has four flats. The first staff (labeled 'El. Guit.') has a treble clef and a '8' below it. It contains a single note in measure 35, a chord in measure 36, and a single note in measure 37. The second staff has a treble clef and a '8' below it. It contains a single note in measure 35, a chord in measure 36, and a single note in measure 37. The third staff has a treble clef and a '8' below it. It contains a single note in measure 35, a chord in measure 36, and a single note in measure 37.

39

El. Guit.

Three staves of musical notation for measures 39-42. The key signature has four flats. The first staff (labeled 'El. Guit.') has a treble clef and a '8' below it. It contains a single note in measure 39, a chord in measure 40, and a single note in measure 41. The second staff has a treble clef and a '8' below it. It contains a single note in measure 39, a chord in measure 40, and a single note in measure 41. The third staff has a treble clef and a '8' below it. It contains a single note in measure 39, a chord in measure 40, and a single note in measure 41.

43

El. Guit.

El. Guit.

El. Guit.

47

El. Guit.

El. Guit.

El. Guit.

51

El. Guit.

El. Guit.

El. Guit.