

Ending (2)

Composer: Kenji Yamamoto

Game: Super Metroid

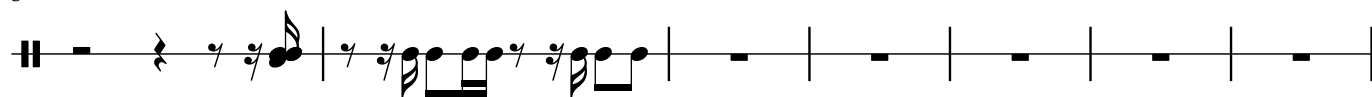
pianogame.org

♩ = 120


4/4



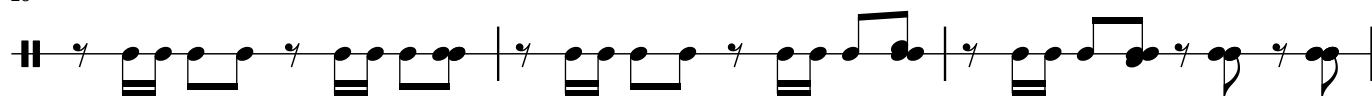
8



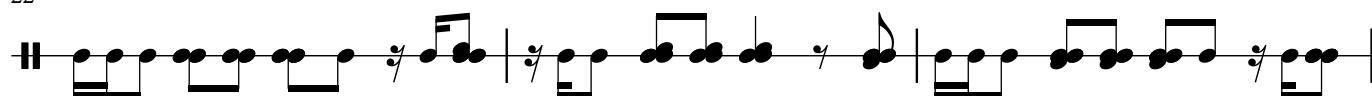
15



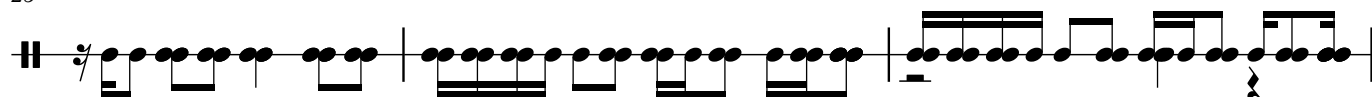
19



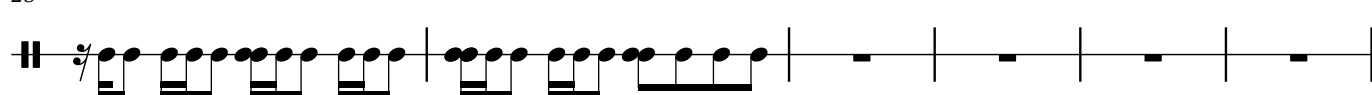
22



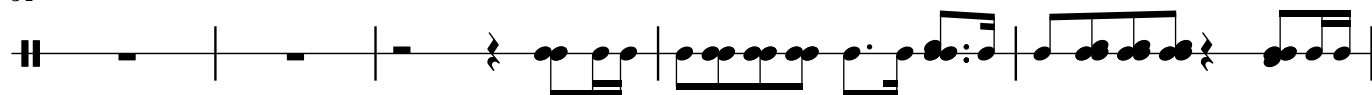
25



28




34



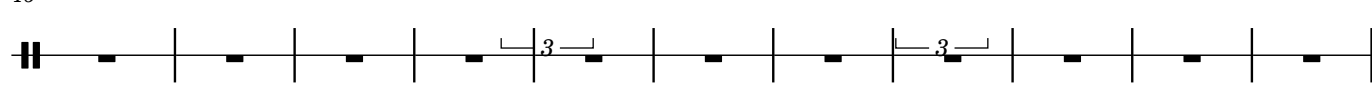
39



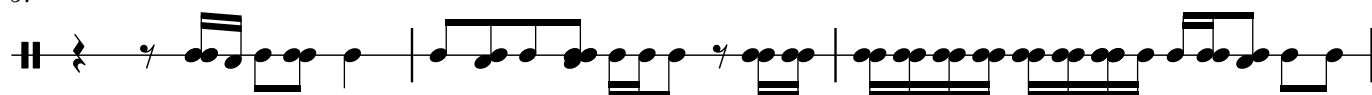
42



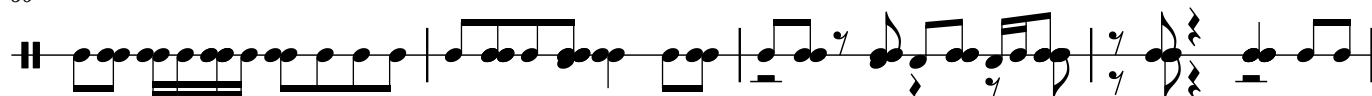
46



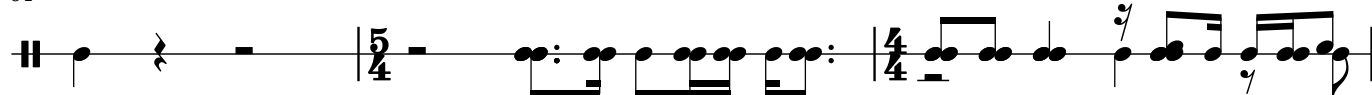
57



60

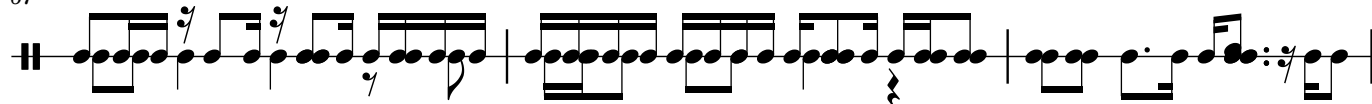


64



2

67



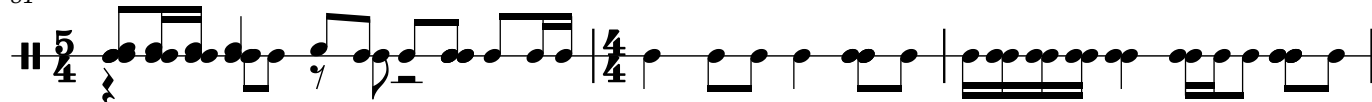
70



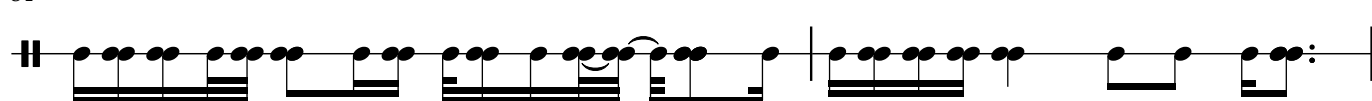
74



81



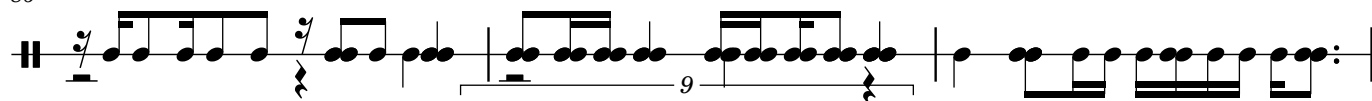
84



9

7

86



3

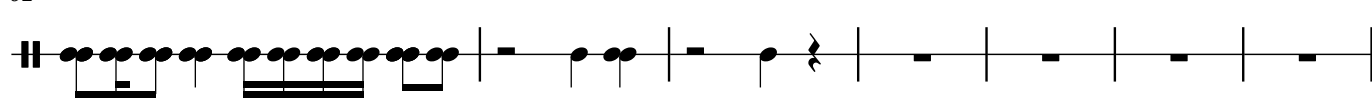
9

7

89



92



99

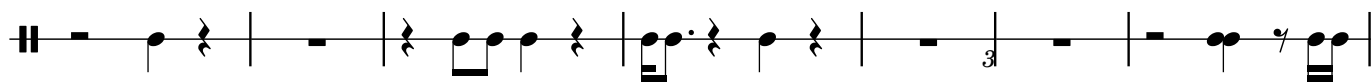


3

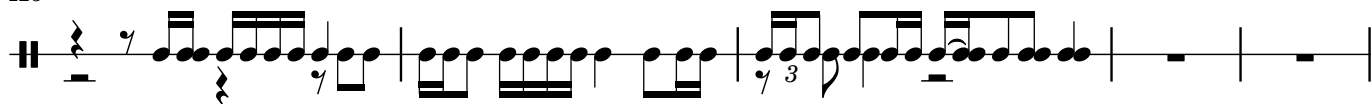
109



118



125



130



3

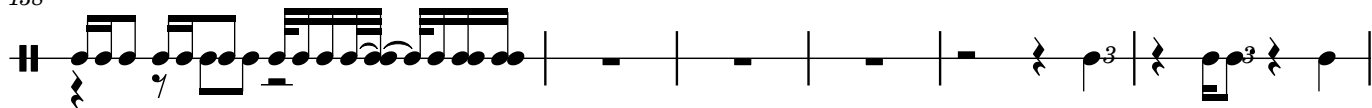
3

3

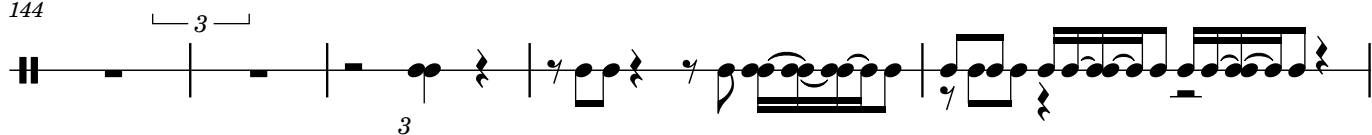
135



138



144



3

3

3

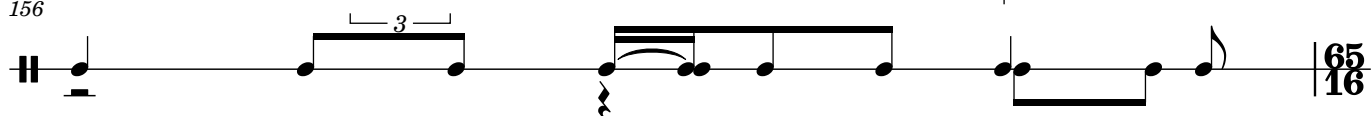
149



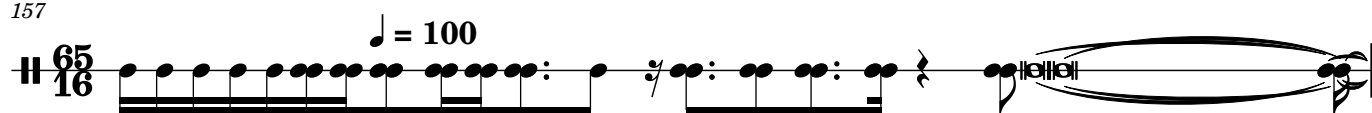
153



156

65
16

4
157



158

