

Stage 6 - Battleship

Composer: Jun Chikuma

Game: Super Bomberman 3

pianogame.org

♩ = 135

Fretless Electric Bass, Original composer: Jun Chiki Chikuma / Keita Hoshi

Voice

Voice, joaobuaes@zipmail.com.br

Two musical staves for the Fretless Electric Bass and Voice. The Fretless Electric Bass staff is in bass clef, and the Voice staff is in treble clef. Both are in 4/4 time. The tempo is marked as ♩ = 135. The staves are empty, indicating the beginning of the piece.

2

Three musical staves for the Fretless Electric Bass (Frtl. El. B.), Voice (Vo.), and another Voice part. The Fretless Electric Bass staff is in bass clef, and the two Voice staves are in treble clef. The tempo is marked as ♩ = 135. The staves show the first four measures of the piece, with the Fretless Electric Bass playing a melodic line and the Voice parts providing harmonic support.

6

Three musical staves for the Fretless Electric Bass (Frtl. El. B.), Voice (Vo.), and another Voice part. The Fretless Electric Bass staff is in bass clef, and the two Voice staves are in treble clef. The tempo is marked as ♩ = 135. The staves show the next four measures of the piece, with the Fretless Electric Bass continuing its melodic line and the Voice parts providing harmonic support.

9

Three musical staves for the Fretless Electric Bass (Frtl. El. B.), Voice (Vo.), and another Voice part. The Fretless Electric Bass staff is in bass clef, and the two Voice staves are in treble clef. The tempo is marked as ♩ = 135. The staves show the next three measures of the piece, with the Fretless Electric Bass continuing its melodic line and the Voice parts providing harmonic support.

12

Three musical staves for the Fretless Electric Bass (Frtl. El. B.), Voice (Vo.), and another Voice part. The Fretless Electric Bass staff is in bass clef, and the two Voice staves are in treble clef. The tempo is marked as ♩ = 135. The staves show the final three measures of the piece, with the Fretless Electric Bass continuing its melodic line and the Voice parts providing harmonic support.

15

Frtl. El. B.

Vo.

Vo.

19

Frtl. El. B.

Vo.

Vo.

22

Frtl. El. B.

Vo.

Vo.

24

Frtl. El. B.

Vo.

Vo.

28

Frtl. El. B.

Vo.

Vo.

31

Frtl. El. B.

Vo.

Vo.

Measures 31-33. The Frtl. El. B. part has a melodic line with flats. The two Vo. parts have rests in measure 31 and enter in measure 32 with a dotted quarter note followed by an eighth note.

34

Frtl. El. B.

Vo.

Vo.

Measures 34-36. The Frtl. El. B. part continues its melodic line. The two Vo. parts have rests throughout measures 34-36.

37

Frtl. El. B.

Vo.

Vo.

Measures 37-40. The Frtl. El. B. part has a melodic line with eighth notes and flats. The two Vo. parts have rests throughout measures 37-40.

41

Frtl. El. B.

Vo.

Vo.

Measures 41-44. The Frtl. El. B. part continues its melodic line. The two Vo. parts have rests throughout measures 41-44.

45

Frtl. El. B.

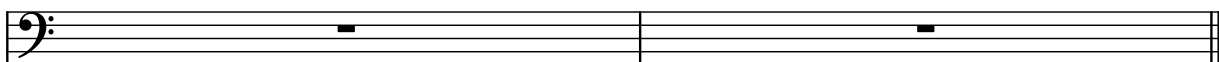
Vo.

Vo.

Measures 45-48. The Frtl. El. B. and the first Vo. part have rests. The second Vo. part has a continuous eighth-note accompaniment pattern throughout measures 45-48.

47

Frtl. El. B.



Vo.



Vo.

