

Central City

Composer: Yutaka Minobe

Game: Sonic Battle

pianogame.org

♩ = 132

Saw Synthesizer, Sonic Battle



Mallet Synthesizer, Central City



Baritone Saxophone, Sequenced by Jace



3

Synth.



Mal. Syn.

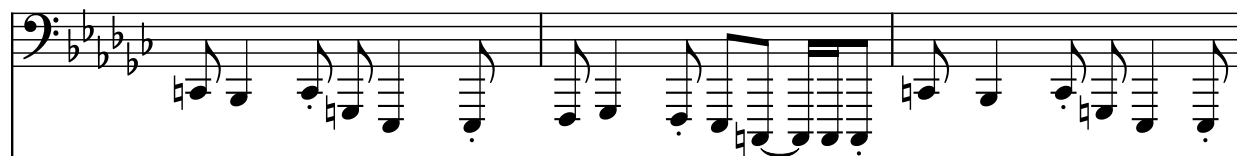


Bar. Sax.



6

Synth.



Mal. Syn.



Bar. Sax.



9

Synth.

Mal. Syn.

Bar. Sax.

This system contains measures 9, 10, and 11. The Synth and Mal. Syn. parts are in the bass clef, key of B-flat major (four flats). They play a complex, syncopated melody with many beamed sixteenth and thirty-second notes. The Bar. Sax. part is in the treble clef and is mostly silent, with a few notes in measure 10.

12

Synth.

Mal. Syn.

Bar. Sax.

This system contains measures 12, 13, and 14. The Synth and Mal. Syn. parts continue the complex, syncopated melody. The Bar. Sax. part remains silent.

15

Synth.

Mal. Syn.

Bar. Sax.

This system contains measures 15, 16, and 17. The Synth and Mal. Syn. parts continue the complex, syncopated melody. The Bar. Sax. part remains silent.

18

Synth.

Mal. Syn.

Bar. Sax.

Measures 18-20. Synth and Mal. Syn. are in bass clef with a key signature of three flats. Bar. Sax. is in treble clef. The music features a complex rhythmic pattern with many beamed sixteenth and thirty-second notes.

21

Synth.

Mal. Syn.

Bar. Sax.

Measures 21-23. Synth and Mal. Syn. are in bass clef with a key signature of three flats. Bar. Sax. is in treble clef. The music continues with complex rhythmic patterns.

24

Synth.

Mal. Syn.

Bar. Sax.

Measures 24-26. Synth and Mal. Syn. are in bass clef with a key signature of three flats. Bar. Sax. is in treble clef. The music continues with complex rhythmic patterns.

27

Synth.

Mal. Syn.

Bar. Sax.

Measures 27-29. The Synth. and Mal. Syn. parts are in the bass clef, playing a rhythmic pattern of eighth and sixteenth notes. The Bar. Sax. part is in the treble clef, playing a melodic line with eighth and sixteenth notes, including some grace notes and slurs.

30

Synth.

Mal. Syn.

Bar. Sax.

Measures 30-32. The Synth. and Mal. Syn. parts continue their rhythmic pattern. The Bar. Sax. part continues its melodic line, featuring a triplet in measure 31 and a slurred eighth-note phrase in measure 32.

33

Synth.

Mal. Syn.

Bar. Sax.

Measures 33-35. The Synth. and Mal. Syn. parts continue their rhythmic pattern. The Bar. Sax. part continues its melodic line, featuring a triplet in measure 34 and a slurred eighth-note phrase in measure 35.

36

Synth.

Mal. Syn.

Bar. Sax.

Measures 36-37. Synth. and Mal. Syn. play a descending eighth-note line in the bass clef. Bar. Sax. plays a short melodic phrase in the treble clef.

38

Synth.

Mal. Syn.

Bar. Sax.

Measures 38-39. Synth. and Mal. Syn. continue the descending eighth-note line. Bar. Sax. plays a short melodic phrase in the treble clef.

40

Synth.

Mal. Syn.

Bar. Sax.

Measures 40-41. Synth. and Mal. Syn. continue the descending eighth-note line. Bar. Sax. plays a short melodic phrase in the treble clef.

43

Synth.

Mal. Syn.

Bar. Sax.

Measures 43-45. The Synth. and Mal. Syn. parts are in the bass clef and play a complex, syncopated melody with many beamed sixteenth and thirty-second notes. The Bar. Sax. part is in the treble clef and plays a simpler melody with eighth and quarter notes, including some rests and slurs.

46

Synth.

Mal. Syn.

Bar. Sax.

Measures 46-48. The Synth. and Mal. Syn. parts continue their complex, syncopated melody. The Bar. Sax. part continues with eighth and quarter notes, including some rests and slurs.

49

Synth.

Mal. Syn.

Bar. Sax.

Measures 49-51. The Synth. and Mal. Syn. parts continue their complex, syncopated melody. The Bar. Sax. part is mostly silent, with a few notes in measure 49 and rests in measures 50 and 51.

52

Synth.

Mal. Syn.

Bar. Sax.

Measures 52-54. Synth and Mal. Syn. play a complex bass line with many beamed notes. Bar. Sax. is silent.

55

Synth.

Mal. Syn.

Bar. Sax.

Measures 55-57. Synth and Mal. Syn. continue their complex bass line. Bar. Sax. is silent.

58

Synth.

Mal. Syn.

Bar. Sax.

Measures 58-60. Synth and Mal. Syn. continue their complex bass line. Bar. Sax. plays a rhythmic pattern.

61

Synth.

Mal. Syn.

Bar. Sax.

Measures 61-63. The Synth. and Mal. Syn. parts play a continuous eighth-note pattern. The Bar. Sax. part plays a series of eighth notes and rests.

64

Synth.

Mal. Syn.

Bar. Sax.

Measures 64-66. The Synth. and Mal. Syn. parts play a continuous eighth-note pattern. The Bar. Sax. part plays a series of eighth notes and rests.

67

Synth.

Mal. Syn.

Bar. Sax.

Measures 67-69. The Synth. and Mal. Syn. parts play a continuous eighth-note pattern. The Bar. Sax. part plays a series of eighth notes and rests.

70

Synth.

Mal. Syn.

Bar. Sax.

73

Synth.

Mal. Syn.

Bar. Sax.

76

Synth.

Mal. Syn.

Bar. Sax.

78

Synth.

Mal. Syn.

Bar. Sax.

Measures 78-79. The Synth. and Mal. Syn. staves play a descending eighth-note melody. The Bar. Sax. staff plays a short melodic phrase in the first measure, followed by rests.

80

Synth.

Mal. Syn.

Bar. Sax.

Measures 80-81. The Synth. and Mal. Syn. staves play a descending eighth-note melody. The Bar. Sax. staff plays a short melodic phrase in the first measure, followed by rests.