

# **Wily Stage 2 (Arranged)**

Composer: Yasuaki Fujita

Game: Mega Man: Dr. Wily's Revenge

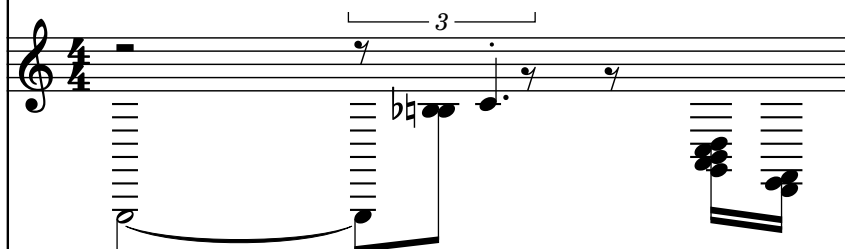
[pianogame.org](http://pianogame.org)

♩ = 146

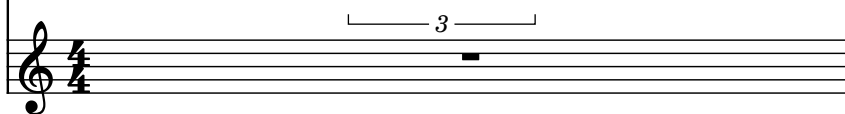
Bass Synthesizer, Synth Bass 1



Pedal Steel Guitar, Electric Guitar (jazz)



Accordion, Accordion

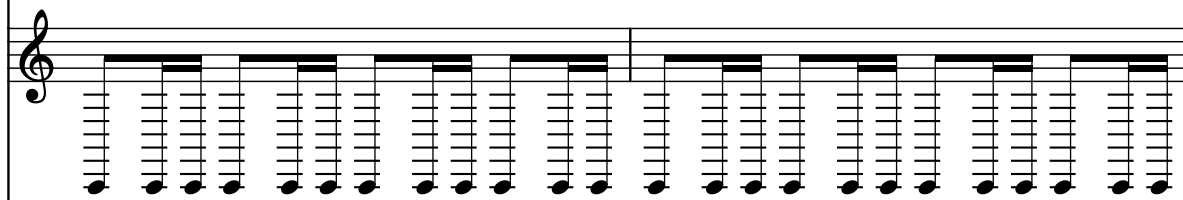


2

Synth.



Ped. St. Guit.



Acc.

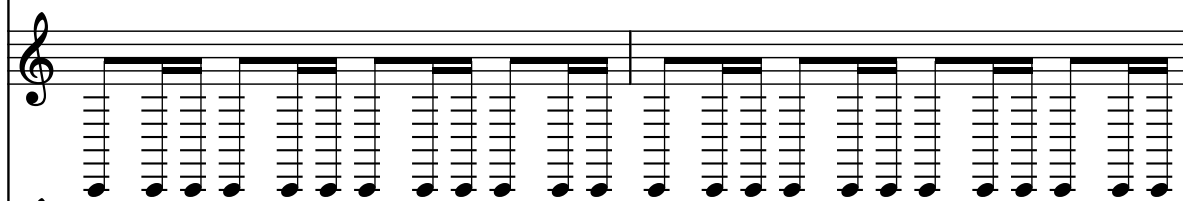


4

Synth.



Ped. St. Guit.



Acc.



6

Synth.

Ped. St. Guit.

Acc.

8

Synth.

Ped. St. Guit.

Acc.

11

Synth.

Ped. St. Guit.

Acc.

15

Synth.

Ped. St. Guit.

Acc.

19

Synth.

Ped. St. Guit.

Acc.

23

Synth.

Ped. St. Guit.

Acc.

26

Synth.

Ped. St. Guit.

Acc.

28

Synth.

Ped. St. Guit.

Acc.

30

Synth.

Ped. St. Guit.

Acc.

Measures 30-31. The Synth. part is in the bass clef, playing a continuous eighth-note pattern. The Ped. St. Guit. part is in the treble clef, playing a continuous eighth-note pattern. The Acc. part is in the treble clef, playing a series of chords and single notes, including a half note G4 and a half note F4.

32

Synth.

Ped. St. Guit.

Acc.

Measures 32-33. The Synth. part is in the bass clef, playing a continuous eighth-note pattern. The Ped. St. Guit. part is in the treble clef, playing a continuous eighth-note pattern. The Acc. part is in the treble clef, playing a series of chords and single notes, including a half note G4 and a half note F4.

35

Synth.

Ped. St. Guit.

Acc.

Measures 35-38. The Synth. part is in the bass clef, playing a continuous eighth-note pattern. The Ped. St. Guit. part is in the treble clef, playing a continuous eighth-note pattern. The Acc. part is in the treble clef, playing a series of chords and single notes, including a half note G4 and a half note F4.

39

Synth.

Ped. St. Guit.

Acc.

Measures 39-42. The Synth. part is in the bass clef, playing a continuous eighth-note pattern. The Ped. St. Guit. part is in the treble clef, playing a continuous eighth-note pattern. The Acc. part is in the treble clef, playing a series of chords and single notes, including a half note G4 and a half note F4.

42

Synth.

Ped. St. Guit.

Acc.

46

Synth.

Ped. St. Guit.

Acc.

50

Synth.

Ped. St. Guit.

Acc.

52

Synth.

Ped. St. Guit.

Acc.

54

Synth.

Ped. St. Guit.

Acc.

56

Synth.

Ped. St. Guit.

Acc.

59

Synth.

Ped. St. Guit.

Acc.

63

Synth.

Ped. St. Guit.

Acc.

67

Synth.

Ped. St. Guit.

Acc.

71

Synth.

Ped. St. Guit.

Acc.

74

Synth.

Ped. St. Guit.

Acc.

76

Synth.

Ped. St. Guit.

Acc.



78

Synth.

Ped. St. Guit.

Acc.

80

Synth.

Ped. St. Guit.

Acc.

83

Synth.

Ped. St. Guit.

Acc.

87

Synth.

Ped. St. Guit.

Acc.

90

Synth.

Ped. St. Guit.

Acc.

94

Synth.

Ped. St. Guit.

Acc.

98

Synth.

Ped. St. Guit.

Acc.

100

Synth.

Ped. St. Guit.

Acc.

102

Synth.

Ped. St. Guit.

Acc.

The Synth. part consists of a continuous eighth-note pattern in the bass clef. The Ped. St. Guit. part consists of a continuous eighth-note pattern in the treble clef. The Acc. part consists of a sequence of chords and single notes in the treble clef.

104

Synth.

Ped. St. Guit.

Acc.

The Synth. part consists of a continuous eighth-note pattern in the bass clef. The Ped. St. Guit. part consists of a continuous eighth-note pattern in the treble clef. The Acc. part consists of a sequence of chords and single notes in the treble clef.