

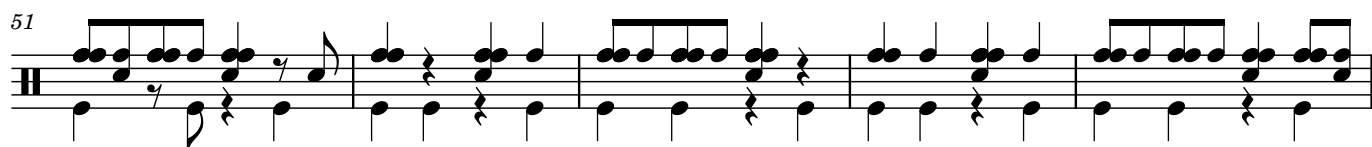
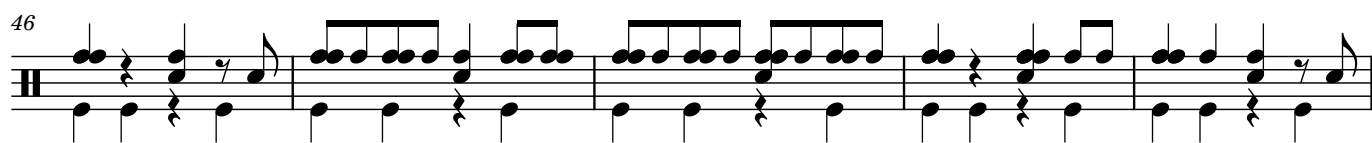
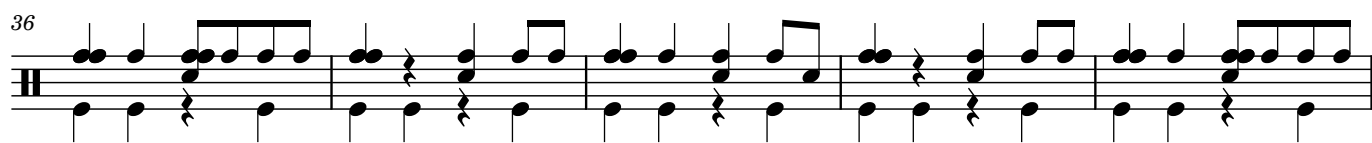
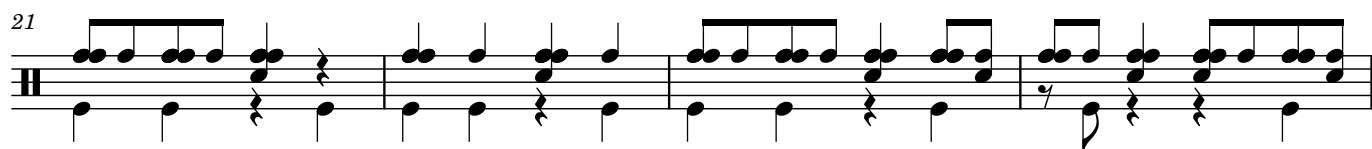
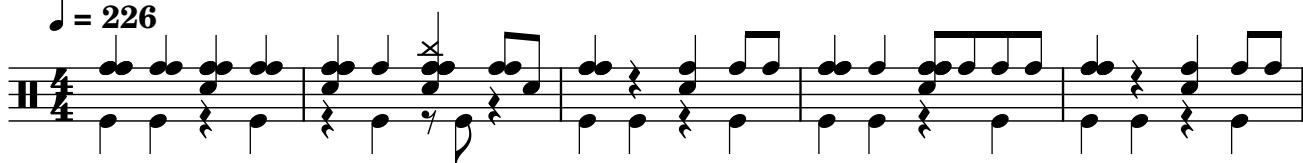
Cerulean City (Remix)

Composer: Junichi Masuda

Game: Pokémon (Red, Blue, Yellow)

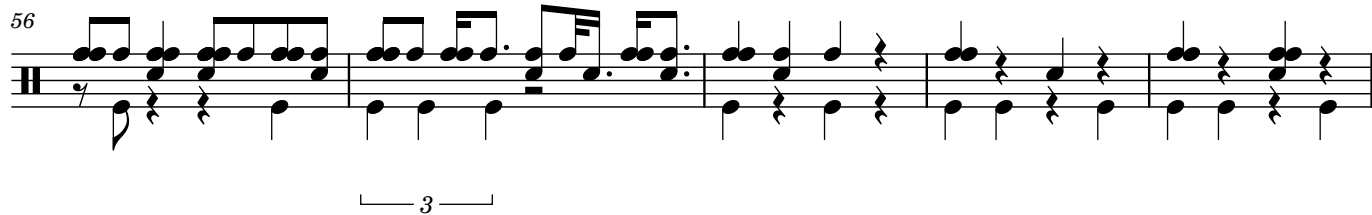
pianogame.org

♩ = 226



2

56



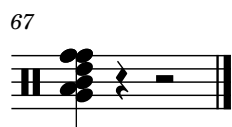
Measures 56-60 of a musical score. The notation is on a grand staff with a treble and bass clef. Measure 56 starts with a treble clef and a key signature of one sharp (F#). The melody in the treble clef consists of eighth and sixteenth notes, while the bass clef provides a steady accompaniment of eighth notes. A triplet of eighth notes is indicated in measure 58 with a bracket and the number '3' below it. The piece concludes with a double bar line at the end of measure 60.

61



Measures 61-66 of a musical score. The notation continues on the grand staff. Measures 61-65 feature a mix of eighth and sixteenth notes in the treble clef, with a consistent eighth-note accompaniment in the bass clef. Measure 66 ends with a final cadence, marked by a double bar line.

67



Measure 67 of a musical score. This measure begins with a treble clef and a key signature of one sharp (F#). It contains a single chord in the treble clef, followed by a whole rest and a double bar line, indicating the end of the piece.