

Sigma Stage 1 (3)

Composer: Makoto Tomozawa

Game: Mega Man X

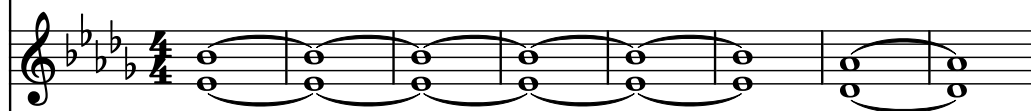
pianogame.org

♩ = 165

Contrabass, Staff



Strings, Staff-1



Brass Synthesizer, Staff-2

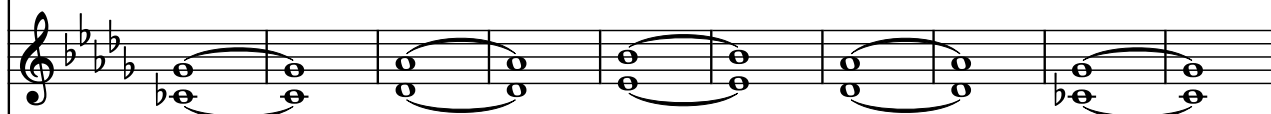


9

Cb.



St.



Synth.



19

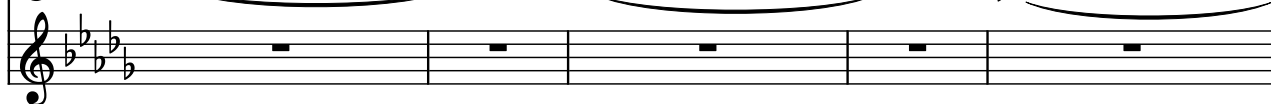
Cb.



St.

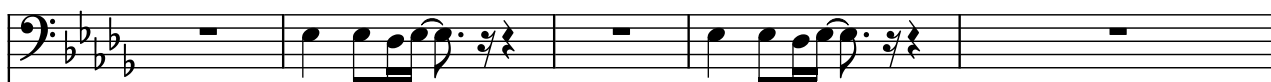


Synth.

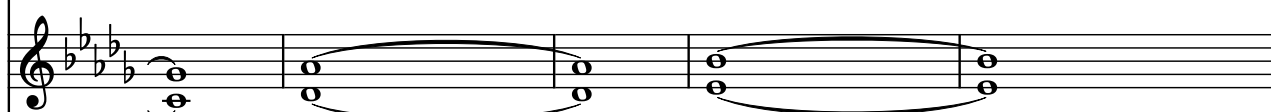


24

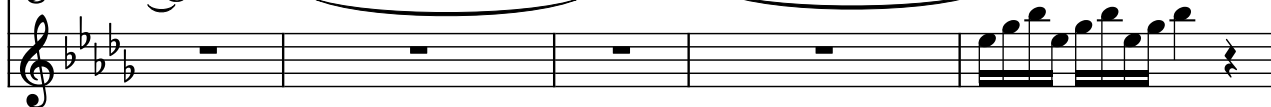
Cb.



St.

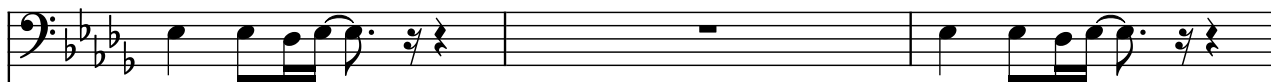


Synth.

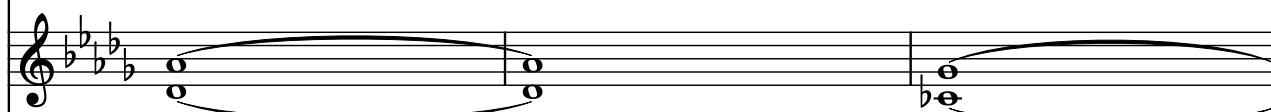


29

Cb.




St.

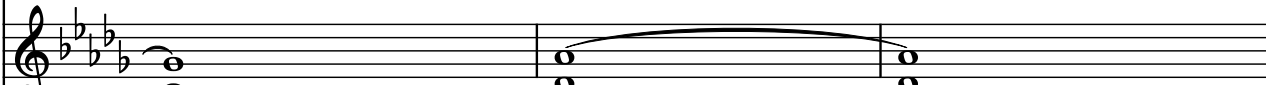


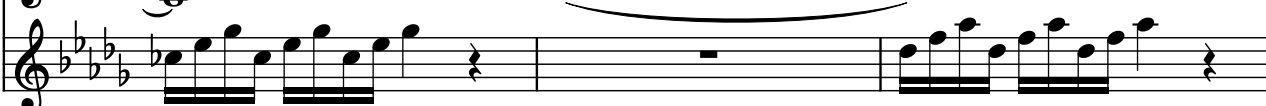
Synth.



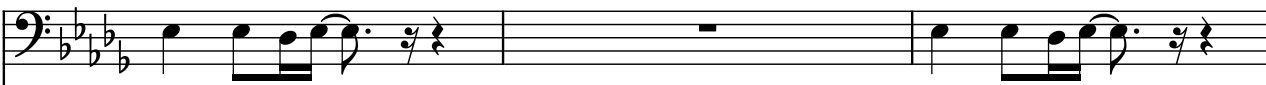
32

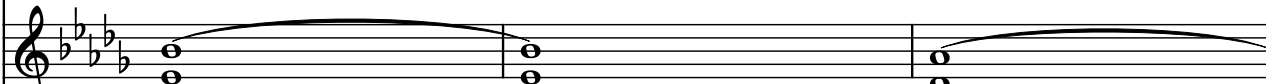
Cb. 


St. 

Synth. 


35

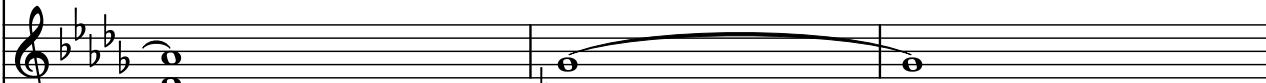
Cb. 

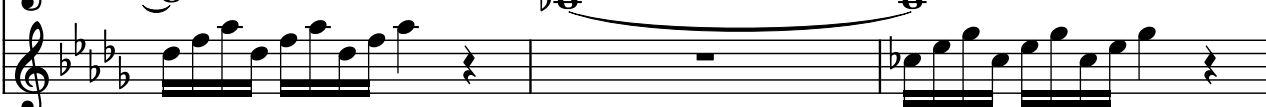
St. 

Synth. 

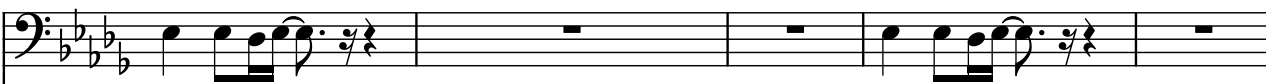
38

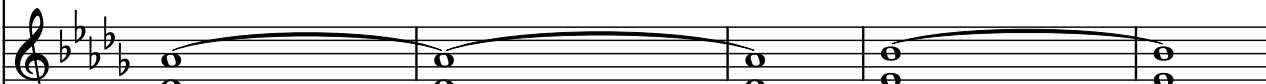
Cb. 


St. 

Synth. 


41

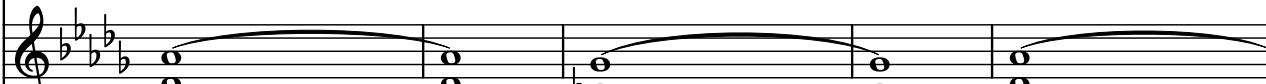
Cb. 

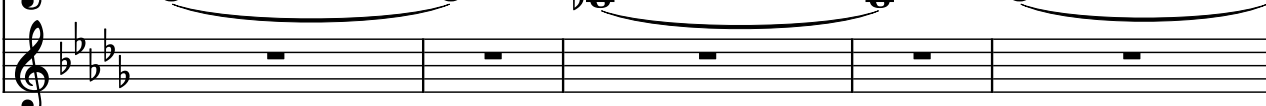
St. 

Synth. 

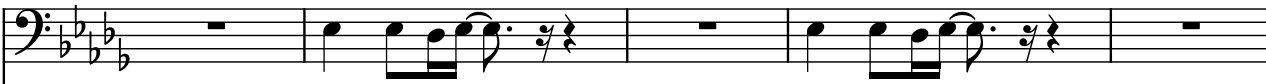
46

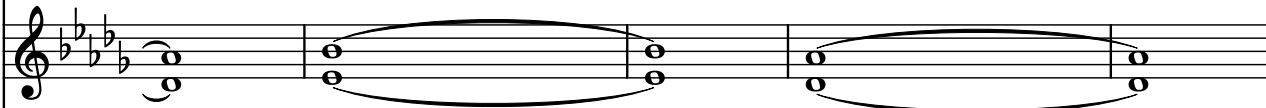
Cb. 


St. 

Synth. 


51


Cb. 

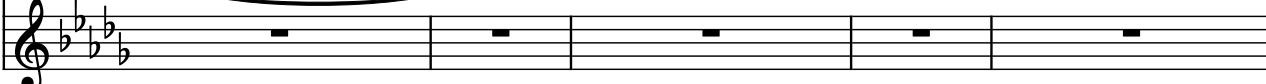
St. 

Synth. 


56

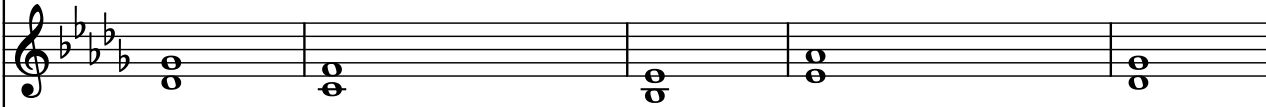
Cb. 


St. 

Synth. 


61

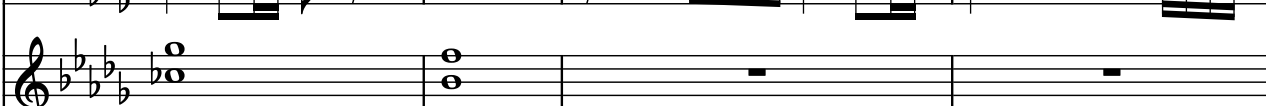
Cb. 

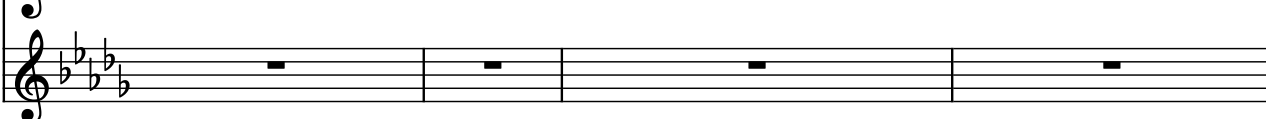
St. 

Synth. 

66

Cb. 

St. 

Synth. 

70

Cb. 

St. 

Synth. 

73

Cb.

St.

Synth.

76

Cb.

St.

Synth.

79

Cb.

St.

Synth.

83

Cb.

St.

Synth.

86

Cb.

St.

Synth.

89

89

Cb.

St.

Synth.

Measures 89-91. The Cb. part has a rest in measure 89, then a melodic line starting in measure 90. The St. part has sustained chords. The Synth. part has a rhythmic pattern of eighth notes.

92

92

Cb.

St.

Synth.

Measures 92-94. The Cb. part continues its melodic line. The St. part has sustained chords. The Synth. part has a rhythmic pattern of eighth notes.

95

95

Cb.

St.

Synth.

Measures 95-97. The Cb. part continues its melodic line. The St. part has sustained chords. The Synth. part has a rhythmic pattern of eighth notes.

98

98

Cb.

St.

Synth.

Measures 98-100. The Cb. part continues its melodic line. The St. part has sustained chords. The Synth. part has a rhythmic pattern of eighth notes.

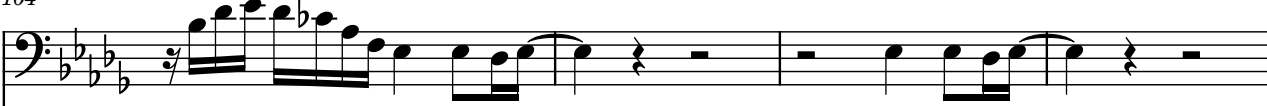
101

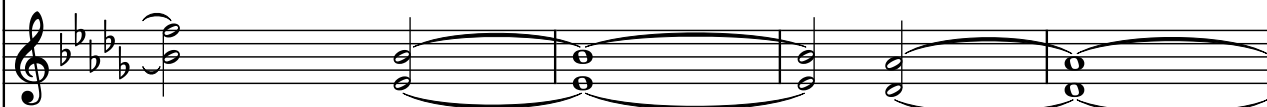
Cb. 

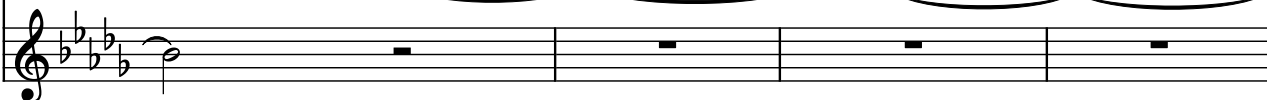
St. 

Synth. 

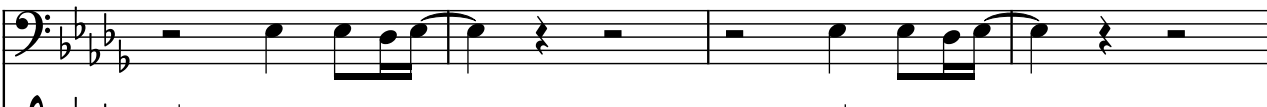
104


Cb. 

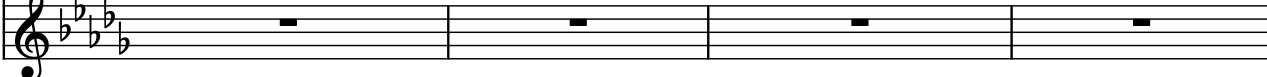
St. 

Synth. 


108

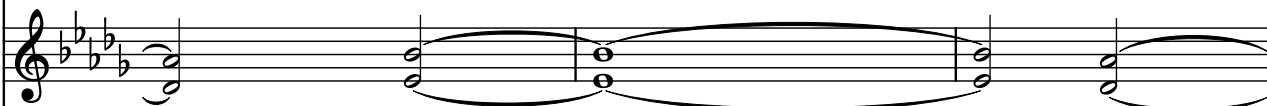
Cb. 

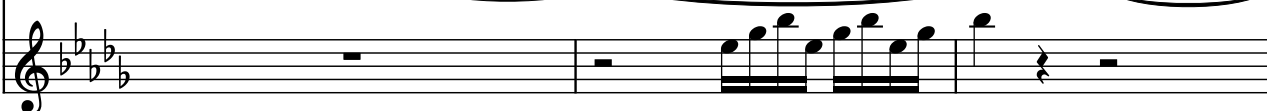
St. 

Synth. 


112

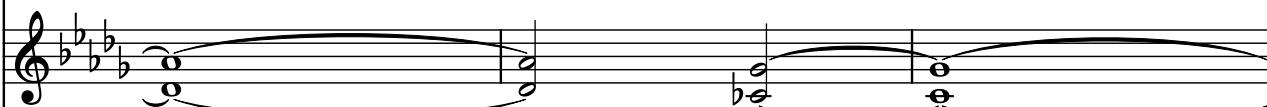
Cb. 

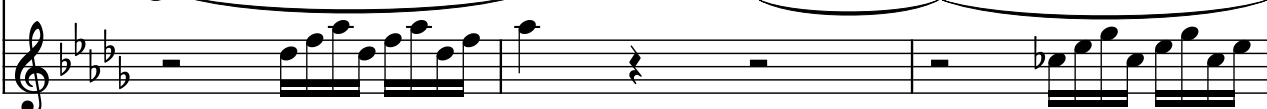
St. 

Synth. 

115

Cb. 

St. 

Synth. 

118

Cb.

St.

Synth.

Measures 118-120. The Cb. part has a melodic line with a fermata. The St. part has a sustained chord with a fermata. The Synth. part has a rhythmic pattern.

121

Cb.

St.

Synth.

Measures 121-123. The Cb. part has a melodic line with a fermata. The St. and Synth. parts are silent.

124

Cb.

St.

Synth.

Measures 124-126. The Cb. part has a melodic line with a fermata. The St. and Synth. parts are silent.

127

Cb.

St.

Synth.

Measures 127-130. The Cb. part has a melodic line with a fermata. The St. and Synth. parts are silent.

131

Cb.

St.

Synth.

Measures 131-133. The Cb. part has a melodic line with a fermata. The St. and Synth. parts are silent.

134

Cb.

St.

Synth.

Measures 134-137. Cb. (Bass) has a melodic line with eighth and sixteenth notes. St. (Treble) has sustained chords. Synth. (Treble) has a rhythmic pattern of eighth notes.

138

Cb.

St.

Synth.

Measures 138-140. Cb. (Bass) has a melodic line. St. (Treble) has sustained chords. Synth. (Treble) has a rhythmic pattern of eighth notes.

141

Cb.

St.

Synth.

Measures 141-143. Cb. (Bass) has a melodic line. St. (Treble) has sustained chords. Synth. (Treble) has a rhythmic pattern of eighth notes.

144

Cb.

St.

Synth.

Measures 144-146. Cb. (Bass) has a melodic line. St. (Treble) has sustained chords. Synth. (Treble) has a rhythmic pattern of eighth notes.

147

Cb.

St.

Synth.

Measures 147-150. Cb. (Bass) has a melodic line. St. (Treble) has sustained chords. Synth. (Treble) has a rhythmic pattern of eighth notes.

150

Cb.

St.

Synth.

Measures 150-152. The Cb. part features a melodic line with eighth and sixteenth notes. The St. part consists of sustained chords. The Synth. part has a rhythmic pattern of eighth notes.

153

Cb.

St.

Synth.

Measures 153-155. The Cb. part continues its melodic line. The St. part has sustained chords. The Synth. part has a rhythmic pattern of eighth notes.

156

Cb.

St.

Synth.

Measures 156-158. The Cb. part continues its melodic line. The St. part has sustained chords. The Synth. part has a rhythmic pattern of eighth notes.

160

Cb.

St.

Synth.

Measures 160-168. The Cb. part is silent. The St. part has sustained chords. The Synth. part is silent.

169


Cb.


St.


Synth.

Measures 169-171. The Cb. part is silent. The St. part has sustained chords. The Synth. part has a rhythmic pattern of eighth notes.

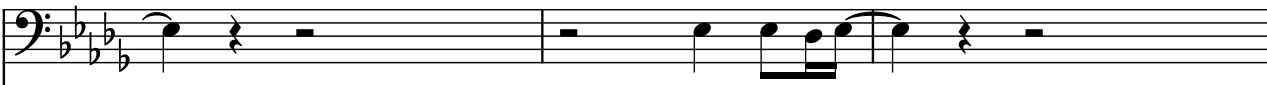
173

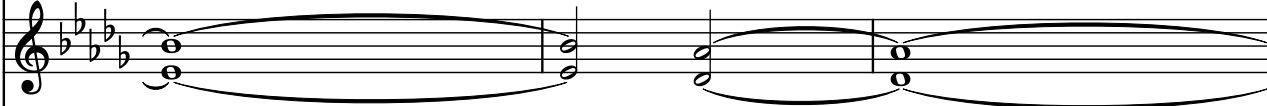
Cb. 


St. 

Synth. 


177


Cb. 

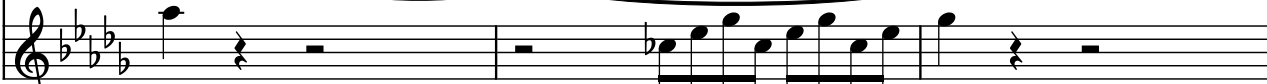
St. 

Synth. 

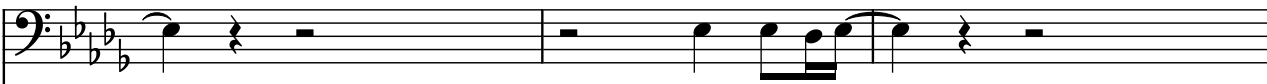
180

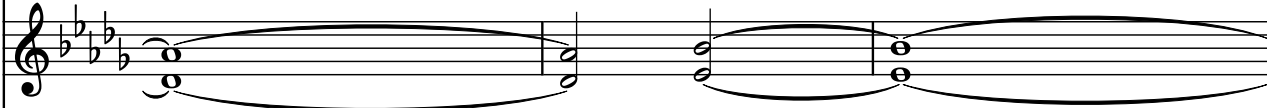
Cb. 


St. 

Synth. 


183


Cb. 


St. 

Synth. 

186


Cb. 

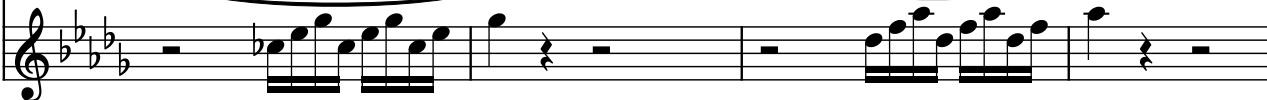
St. 

Synth. 

189

Cb. 

St. 

Synth. 

193

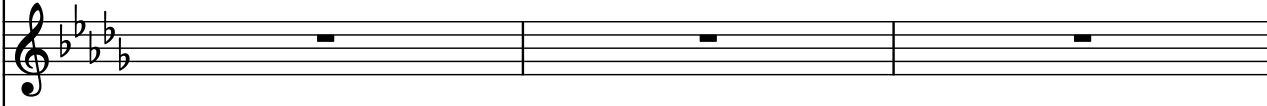
Cb. 

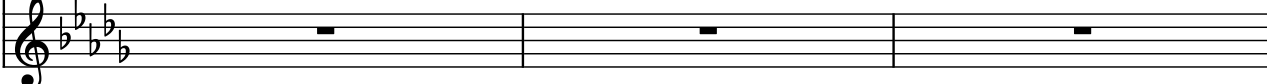
St. 

Synth. 

196

Cb. 

St. 

Synth. 

199

Cb. 

St. 

Synth. 

203

Cb. 

St. 

Synth. 

206

Cb.  St.  Synth. 

Measures 206-209: Cello (Cb.) plays a melodic line in the bass clef, featuring eighth and sixteenth notes. Soprano (St.) and Synthesizer (Synth.) parts are silent, indicated by whole rests.

210

Cb.  St.  Synth. 

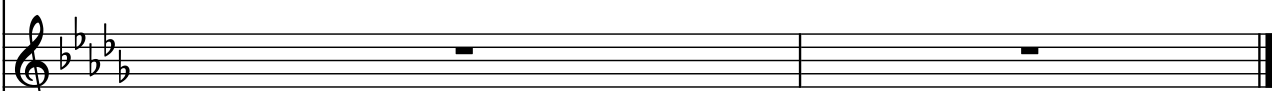
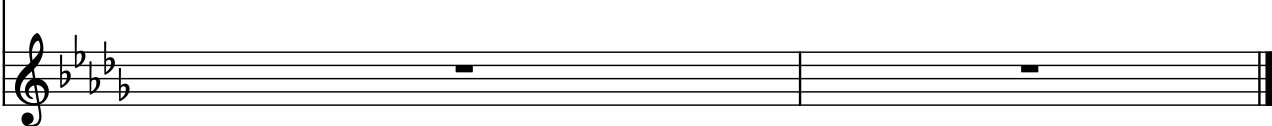
Measures 210-212: Cello (Cb.) continues its melodic line. Soprano (St.) and Synthesizer (Synth.) parts remain silent with whole rests.

213

Cb.  St.  Synth. 

Measures 213-215: Cello (Cb.) continues its melodic line. Soprano (St.) and Synthesizer (Synth.) parts remain silent with whole rests.

216

Cb.  St.  Synth. 

Measures 216-217: Cello (Cb.) plays a final melodic phrase. Soprano (St.) and Synthesizer (Synth.) parts remain silent with whole rests. The system concludes with a double bar line.