

Visitor Center

Composer: John Williams

Game: Jurassic Park

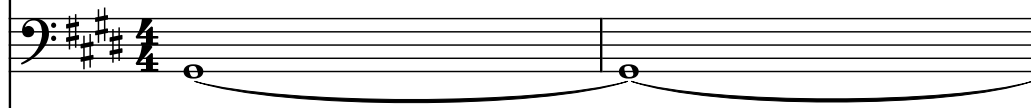
pianogame.org

♩ = 115

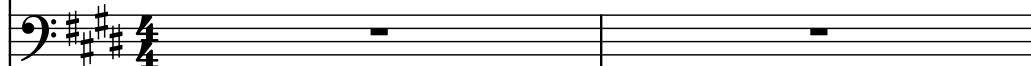
Bass Synthesizer, Track 1



Bass Guitar, Track 2



Violoncellos (section)



3

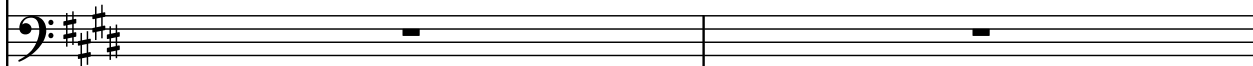
Synth.



B. Guit.



Vcs.

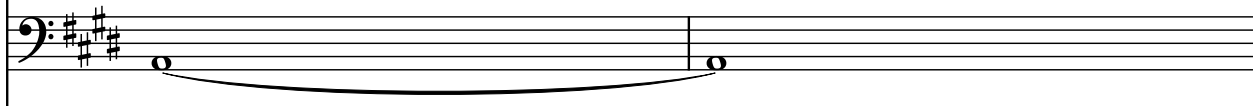


5

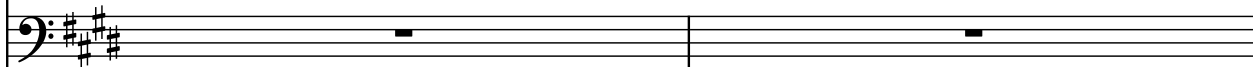
Synth.



B. Guit.



Vcs.



7

Synth.



B. Guit.



Vcs.



9

Synth.

B. Guit.

Vcs.

Measures 9-10. The Synth. part features a continuous eighth-note pattern. The B. Guit. part has a long sustain note. The Vcs. part has a bass line with a chordal accompaniment.

11

Synth.

B. Guit.

Vcs.

Measures 11-12. The Synth. part continues with the eighth-note pattern. The B. Guit. part has a long sustain note. The Vcs. part has a bass line with a chordal accompaniment.

13

Synth.

B. Guit.

Vcs.

Measures 13-14. The Synth. part continues with the eighth-note pattern. The B. Guit. part has a moving line. The Vcs. part has a bass line with a chordal accompaniment.

15

Synth.

B. Guit.

Vcs.

Measures 15-16. The Synth. part continues with the eighth-note pattern. The B. Guit. part has a moving line. The Vcs. part has a bass line with a chordal accompaniment.

17

Synth.

B. Guit.

Vcs.

Measures 17-19. Synth. plays a continuous eighth-note pattern. B. Guit. has a long note with a slur. Vcs. has a complex chordal structure with a slur.

20

Synth.

B. Guit.

Vcs.

Measures 20-23. Synth. is silent. B. Guit. plays a continuous eighth-note pattern. Vcs. has a complex chordal structure with a slur.

24

Synth.

B. Guit.

Vcs.

Measures 24-27. Synth. is silent. B. Guit. plays a continuous eighth-note pattern. Vcs. has a complex chordal structure with a slur.

28

Synth.

B. Guit.

Vcs.

Measures 28-31. Synth. is silent. B. Guit. plays a continuous eighth-note pattern. Vcs. has a complex chordal structure with a slur.

36

Synth.

B. Guit.

Vcs.

Measures 36-38. The Synth part is silent. The B. Guit. part features a continuous eighth-note pattern in the bass clef. The Vcs. part has a long note in measure 36, a whole note in measure 37, and a half note in measure 38.

39

Synth.

B. Guit.

Vcs.

Measures 39-41. The Synth part is silent. The B. Guit. part continues with eighth-note patterns. The Vcs. part has a half note in measure 39, a whole note in measure 40, and a half note in measure 41.

42

Synth.

B. Guit.

Vcs.

Measures 42-44. The Synth part is silent. The B. Guit. part continues with eighth-note patterns. The Vcs. part has a half note in measure 42, a whole note in measure 43, and a half note in measure 44.

45

Synth.

B. Guit.

Vcs.

Measures 45-47. The Synth part is silent. The B. Guit. part has a half note in measure 45, a whole note in measure 46, and a half note in measure 47. The Vcs. part has a half note in measure 45, a whole note in measure 46, and a half note in measure 47.