

Make Eggs, Throw Eggs (6)

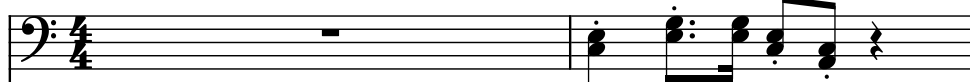
Composer: Koji Kondo

Game: Super Mario World 2: Yoshi's Island

pianogame.org

♩ = 120

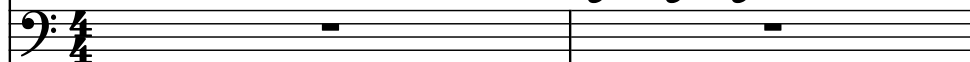
Marimba (grand staff), Track 1



Pedal Steel Guitar, Track 2

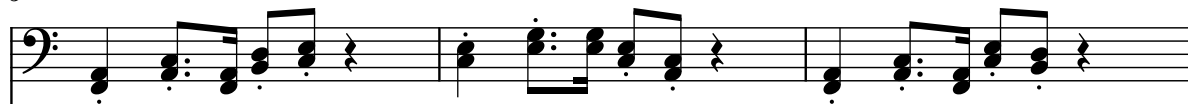


Contrabass, Track 3



3

Mrm.



Ped. St. Guit.



Cb.

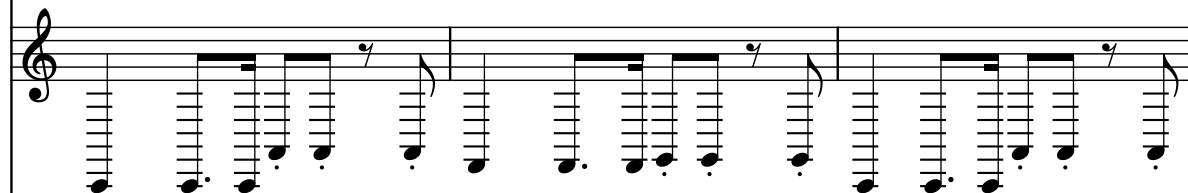


6

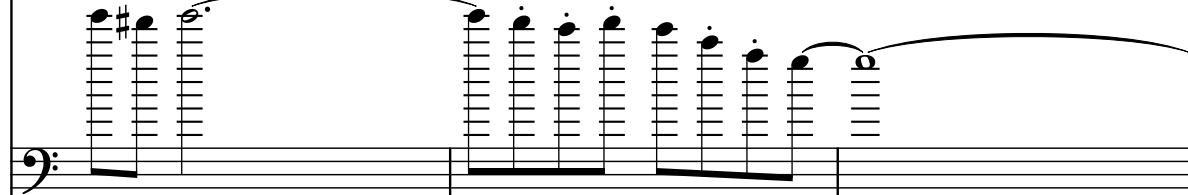
Mrm.



Ped. St. Guit.



Cb.



9

Mrm.

Ped. St. Guit.

Cb.

Measures 9-11. The Mrm. part is in bass clef, playing chords and eighth notes. The Ped. St. Guit. part is in treble clef, playing a rhythmic pattern of eighth notes. The Cb. part is in bass clef, playing a melodic line with a long slur over measures 10 and 11.

12

Mrm.

Ped. St. Guit.

Cb.

Measures 12-14. The Mrm. part is in bass clef, playing chords and eighth notes. The Ped. St. Guit. part is in treble clef, playing a rhythmic pattern of eighth notes. The Cb. part is in bass clef, playing a melodic line with a long slur over measures 13 and 14.

15

Mrm.

Ped. St. Guit.

Cb.

Measures 15-17. The Mrm. part is in bass clef, playing chords and eighth notes. The Ped. St. Guit. part is in treble clef, playing a rhythmic pattern of eighth notes. The Cb. part is in bass clef, playing a melodic line with a long slur over measures 16 and 17.

18

Mrm.

Ped. St. Guit.

Cb.

Measures 18-20. The Mrm. part is in bass clef with a key signature of one flat, playing a sequence of chords and eighth notes. The Ped. St. Guit. part is in treble clef with a key signature of one flat, playing a sequence of chords and eighth notes. The Cb. part is in bass clef with a key signature of one flat, playing a sequence of chords and eighth notes. The score includes a repeat sign at the end of measure 20.

21

Mrm.

Ped. St. Guit.

Cb.

Measures 21-23. The Mrm. part is in bass clef with a key signature of one flat, playing a sequence of chords and eighth notes. The Ped. St. Guit. part is in treble clef with a key signature of one flat, playing a sequence of chords and eighth notes. The Cb. part is in bass clef with a key signature of one flat, playing a sequence of chords and eighth notes. The score includes a repeat sign at the end of measure 23.

24

Mrm.

Ped. St. Guit.

Cb.

Measures 24-26. The Mrm. part is in bass clef with a key signature of one flat, playing a sequence of chords and eighth notes. The Ped. St. Guit. part is in treble clef with a key signature of one flat, playing a sequence of chords and eighth notes. The Cb. part is in bass clef with a key signature of one flat, playing a sequence of chords and eighth notes. The score includes a repeat sign at the end of measure 26.

27

Mrm.

Ped. St. Guit.

Cb.

Measures 27-29. The Mrm. part (bass clef) plays a sequence of chords and eighth notes. The Ped. St. Guit. part (treble clef) plays a continuous eighth-note pattern with various accidentals. The Cb. part (bass clef) plays a sequence of eighth notes and rests.

30

Mrm.

Ped. St. Guit.

Cb.

Measures 30-33. The Mrm. part (treble clef) is silent. The Ped. St. Guit. part (treble clef) continues the eighth-note pattern. The Cb. part (bass clef) continues the eighth-note pattern with various accidentals.

34

Mrm.

Ped. St. Guit.

Cb.

Measures 34-36. The Mrm. part (treble clef) is silent. The Ped. St. Guit. part (treble clef) continues the eighth-note pattern. The Cb. part (bass clef) continues the eighth-note pattern with various accidentals.

37

Mrm.

Ped. St. Guit.

Cb.

40

Mrm.

Ped. St. Guit.

Cb.

43

Mrm.

Ped. St. Guit.

Cb.

46

Mrm.

Ped. St. Guit.

Cb.

Measures 46-48. The Mrm. part (bass clef) plays a rhythmic pattern of eighth notes and rests. The Ped. St. Guit. part (treble clef) plays a continuous eighth-note pattern. The Cb. part (bass clef) plays a series of chords, with a long slur covering measures 47 and 48.

49

Mrm.

Ped. St. Guit.

Cb.

Measures 49-51. The Mrm. part (bass clef) continues the rhythmic pattern. The Ped. St. Guit. part (treble clef) continues the eighth-note pattern. The Cb. part (bass clef) plays a series of chords, with a long slur covering measures 50 and 51.

52

Mrm.

Ped. St. Guit.

Cb.

Measures 52-54. The Mrm. part (bass clef) continues the rhythmic pattern. The Ped. St. Guit. part (treble clef) continues the eighth-note pattern. The Cb. part (bass clef) plays a series of chords, with a long slur covering measures 53 and 54.

55

Mrm.

Ped. St. Guit.

Cb.

Measures 55-57. The Mrm. part is in bass clef, playing chords and moving lines. The Ped. St. Guit. part is in treble clef, playing a rhythmic pattern of eighth notes. The Cb. part is in bass clef, playing a melodic line with some rests.

58

Mrm.

Ped. St. Guit.

Cb.

Measures 58-60. The Mrm. part is in bass clef, playing chords and moving lines. The Ped. St. Guit. part is in treble clef, playing a rhythmic pattern of eighth notes. The Cb. part is in bass clef, playing a melodic line with some rests.

61

Mrm.

Ped. St. Guit.

Cb.

Measures 61-63. The Mrm. part is in bass clef, playing chords and moving lines. The Ped. St. Guit. part is in treble clef, playing a rhythmic pattern of eighth notes. The Cb. part is in bass clef, playing a melodic line with some rests.

64

Mrm.

Ped. St. Guit.

Cb.

Measures 64-66. The Mrm. part is in bass clef, playing chords and eighth notes. The Ped. St. Guit. part is in treble clef, playing a continuous eighth-note pattern. The Cb. part is in bass clef, playing a continuous eighth-note pattern.

67

Mrm.

Ped. St. Guit.

Cb.

Measures 67-69. The Mrm. part is in bass clef, playing chords and eighth notes. The Ped. St. Guit. part is in treble clef, playing a continuous eighth-note pattern. The Cb. part is in bass clef, playing a continuous eighth-note pattern.

70

Mrm.

Ped. St. Guit.

Cb.

Measures 70-73. The Mrm. part is in treble clef, playing a continuous eighth-note pattern. The Ped. St. Guit. part is in treble clef, playing a continuous eighth-note pattern. The Cb. part is in bass clef, playing a continuous eighth-note pattern.

74

Mrm.

Ped. St. Guit.

Cb.

Measures 74-76. The Mrm. part is silent. The Ped. St. Guit. part features a complex rhythmic pattern with many sixteenth notes and slurs. The Cb. part has a simpler pattern with eighth notes and rests.

77

Mrm.

Ped. St. Guit.

Cb.

Measures 77-79. The Mrm. part is silent. The Ped. St. Guit. part continues with complex rhythmic patterns. The Cb. part has a pattern of eighth notes and rests.

80

Mrm.

Ped. St. Guit.

Cb.

Measures 80-81. The Mrm. part is silent. The Ped. St. Guit. part continues with complex rhythmic patterns. The Cb. part has a pattern of eighth notes and rests.