

Mischievous Robot (3)

Composer: Daisuke Amaya

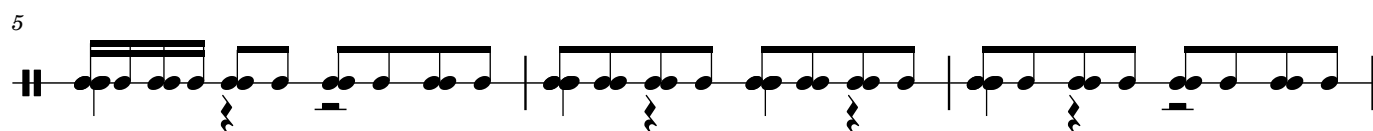
Game: Cave Story

pianogame.org

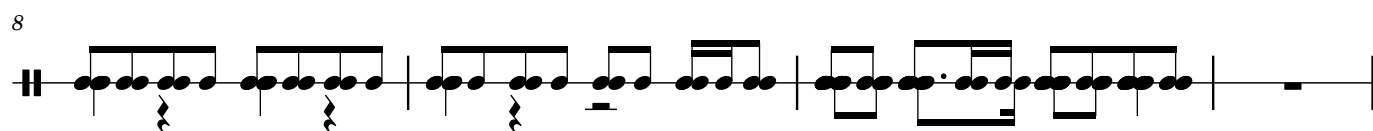
♩ = 160
4/4



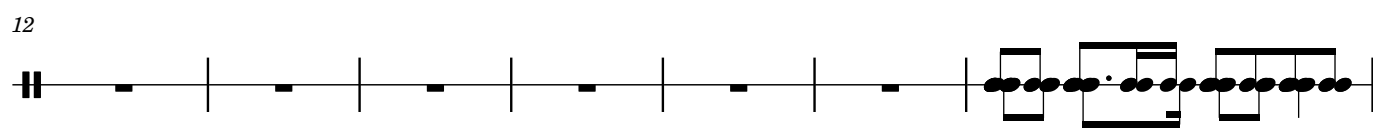
5



8



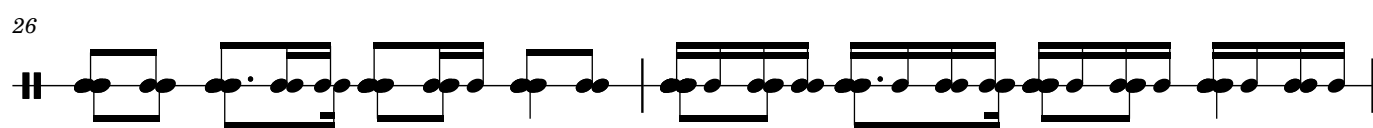
12



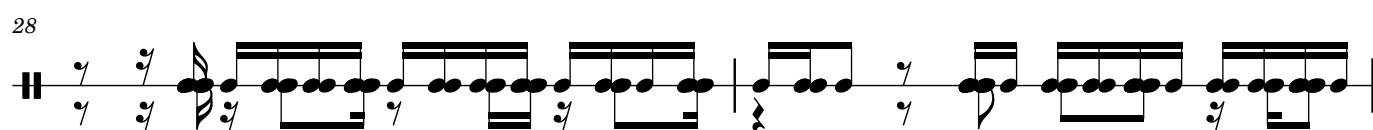
19



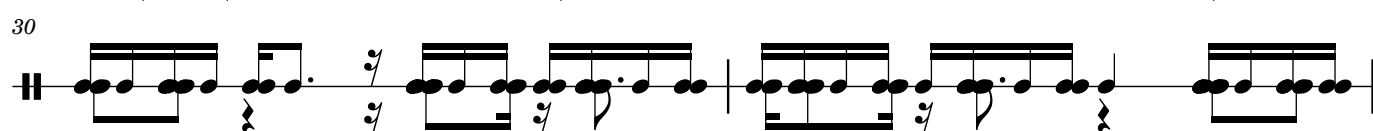
26



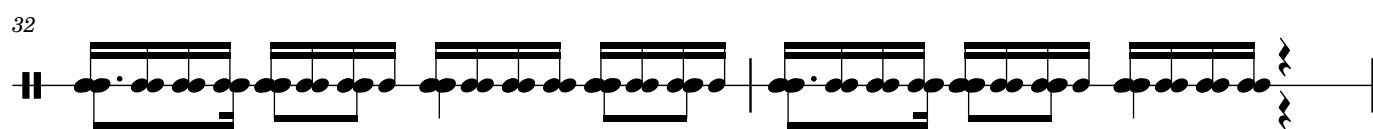
28



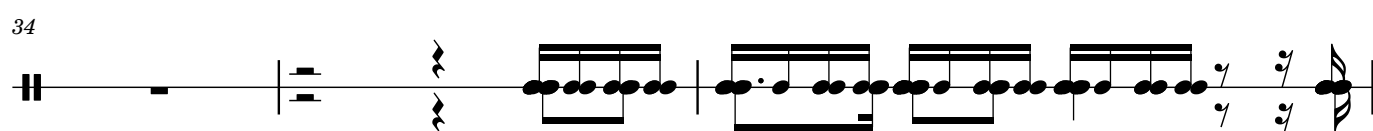
30



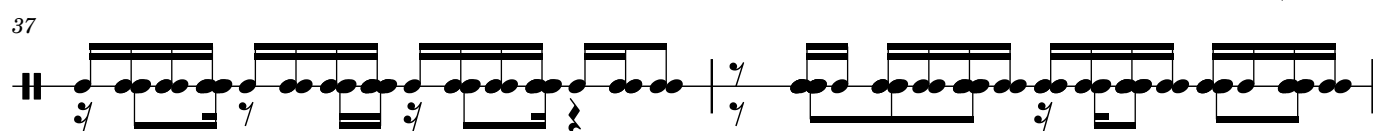
32



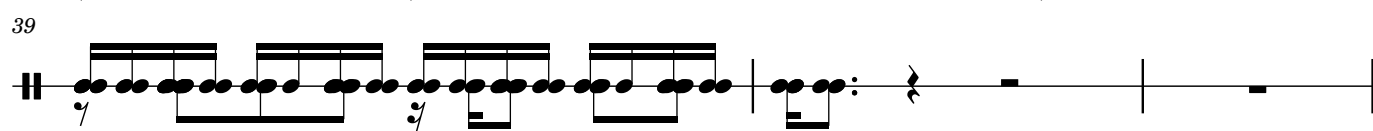
34



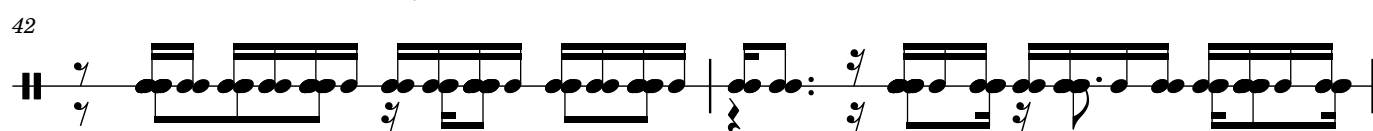
37



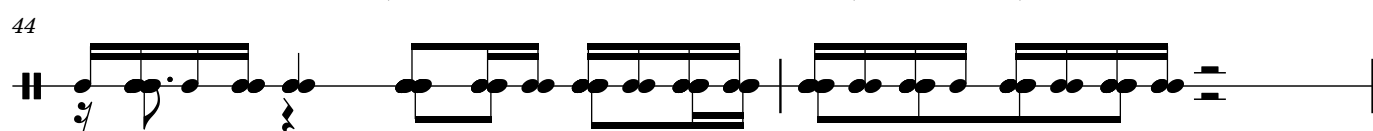
39



42

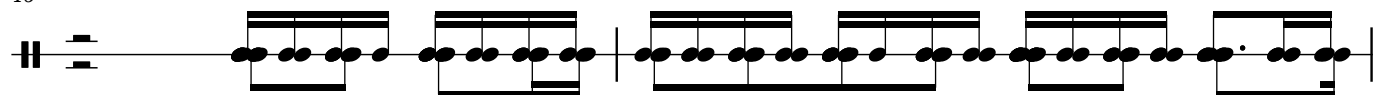


44

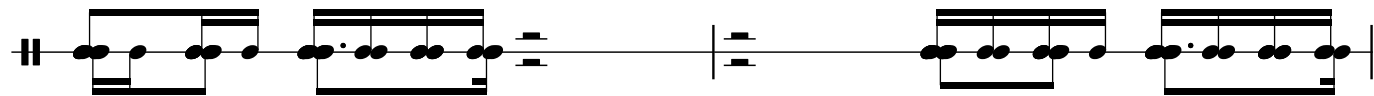


2

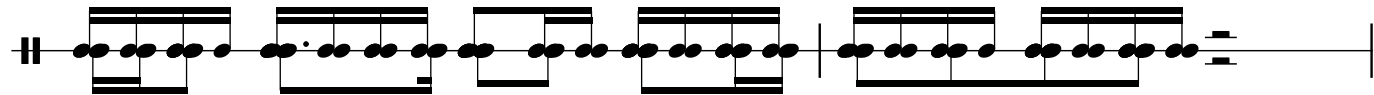
46



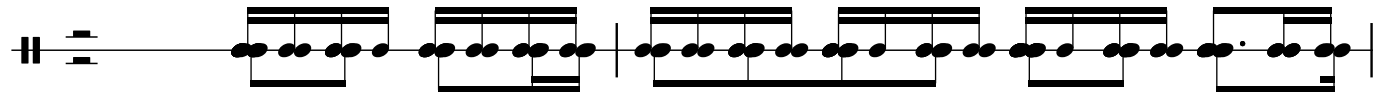
48



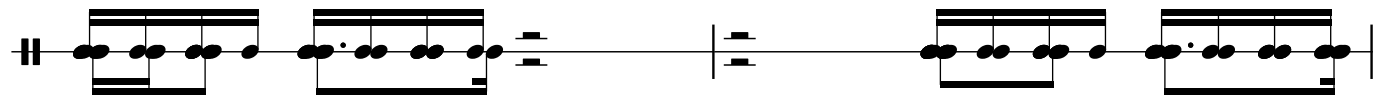
50



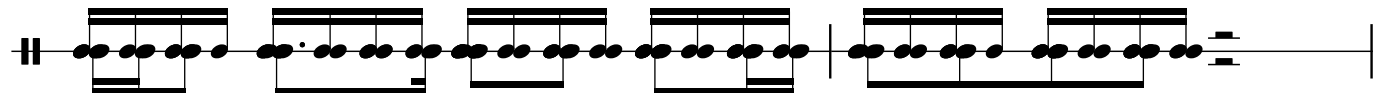
52



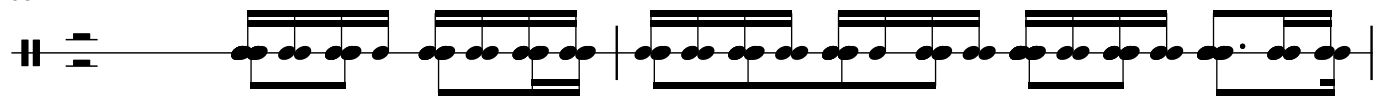
54



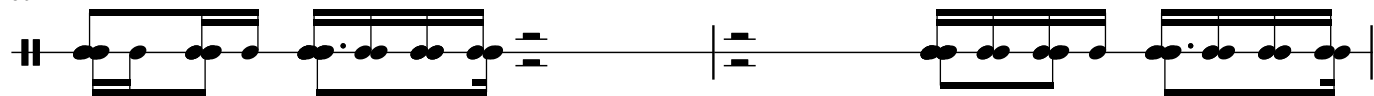
56



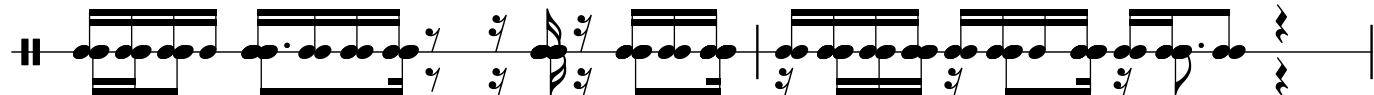
58



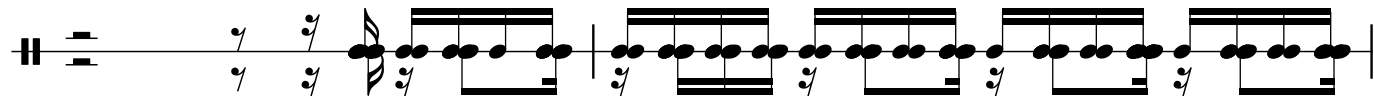
60



62



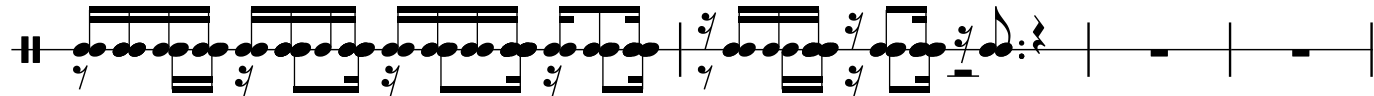
64



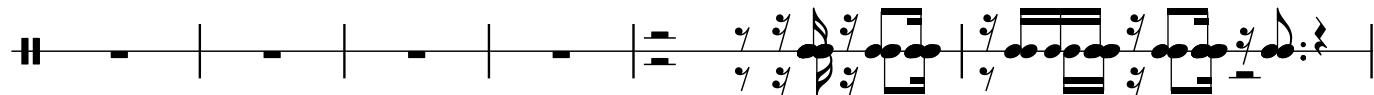
66



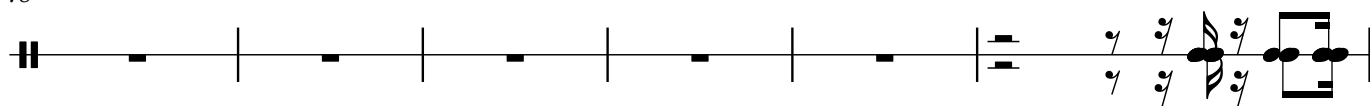
68



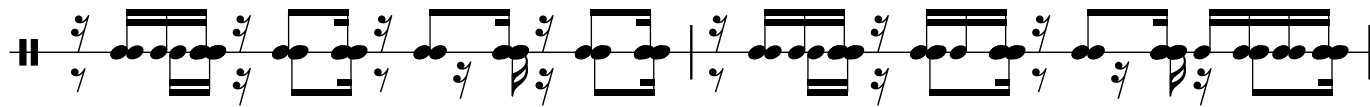
72



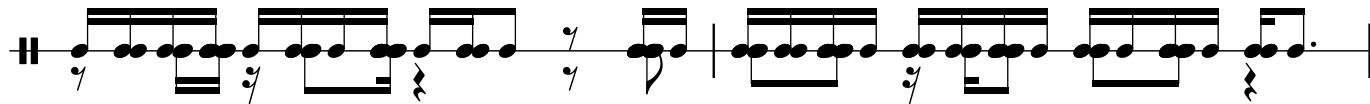
78



84



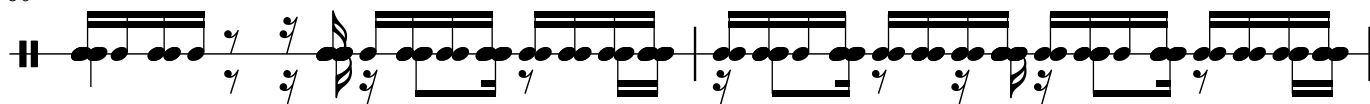
86



88



90



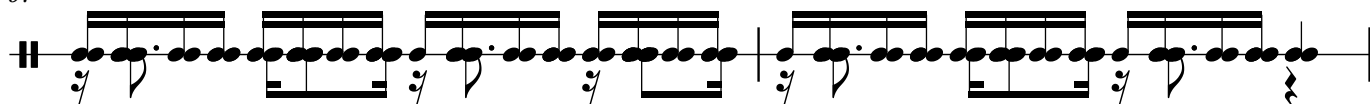
92



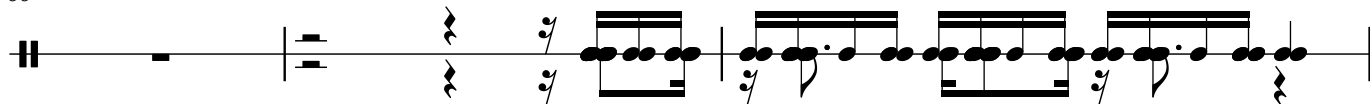
95



97



99



102



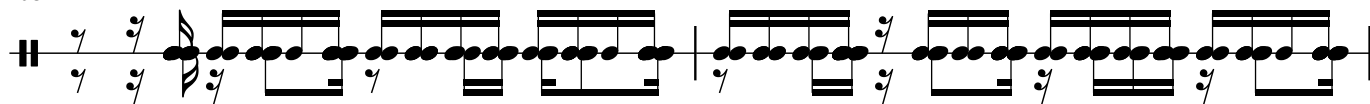
104



106



108



110


112

114


Example 114 is a single-staff musical score in 2/4 time. The melody is written on a single staff and consists of eighth and sixteenth notes. The piece begins with a treble clef and a key signature of one flat (B-flat). The melody is composed of several measures, some of which contain triplets. The piece concludes with a double bar line.

116

118



120



122

[illegible]

126

Example 126

[illegible]


136



143

The musical notation for Example 143 is a single staff in treble clef with a key signature of one sharp (F#). The melody is composed of eighth and sixteenth notes, with some notes beamed together. There are two measures of rests, each marked with a 'y' and a fermata. The piece ends with a double bar line.

145



147

