

First Time on Koholint (Arranged)

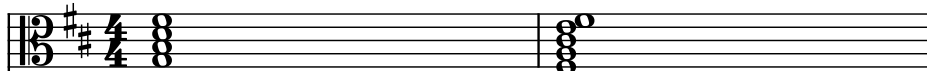
Composer: Ryo Nagamatsu

Game: Legend of Zelda, The: Link's Awakening

pianogame.org

♩ = 110

Violas (section), StringInstrument



Electric Guitar, Electric Guitar

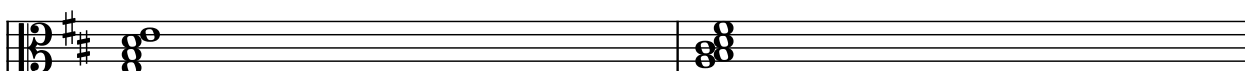


Electric Piano, Electric Piano



3

Vlas.



El. Guit.

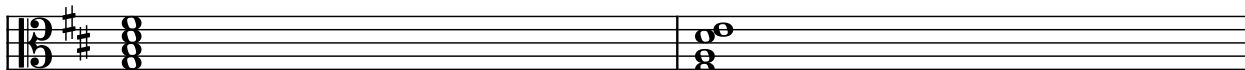


El. Pno.



5

Vlas.



El. Guit.

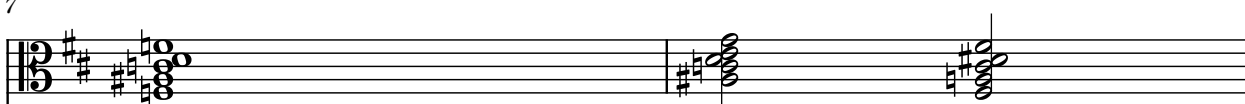


El. Pno.

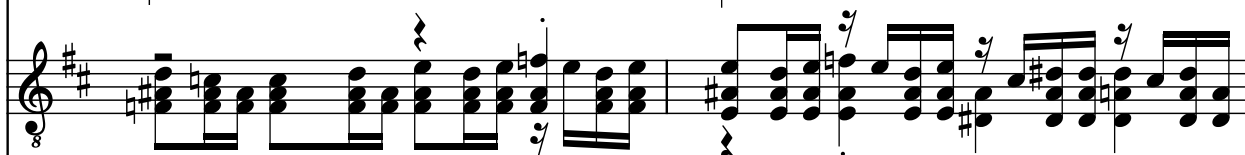


7

Vlas.



El. Guit.



El. Pno.



9

Vlas.

El. Guit.

El. Pno.

Measure 9: Vlas. (Bass) plays a static chord of F#4, C#5, and E5. El. Guit. (Treble) plays a continuous eighth-note chordal pattern. El. Pno. (Treble) plays a single note F#4.

Measure 10: Vlas. (Bass) plays a static chord of F#4, C#5, and E5. El. Guit. (Treble) continues the eighth-note chordal pattern. El. Pno. (Treble) plays a series of eighth-note chords.

11

Vlas.

El. Guit.

El. Pno.

Measure 11: Vlas. (Bass) plays a static chord of F#4, C#5, and E5. El. Guit. (Treble) continues the eighth-note chordal pattern. El. Pno. (Treble) is silent.

Measure 12: Vlas. (Bass) plays a static chord of F#4, C#5, and E5. El. Guit. (Treble) continues the eighth-note chordal pattern. El. Pno. (Treble) plays a single note F#4.

13

Vlas.

El. Guit.

El. Pno.

Measure 13: Vlas. (Bass) plays a static chord of F#4, C#5, and E5. El. Guit. (Treble) continues the eighth-note chordal pattern. El. Pno. (Treble) is silent.

Measure 14: Vlas. (Bass) plays a static chord of F#4, C#5, and E5. El. Guit. (Treble) continues the eighth-note chordal pattern. El. Pno. (Treble) plays a single note F#4.

15

Vlas.

El. Guit.

El. Pno.

Measure 15: Vlas. (Bass) plays a static chord of F#4, C#5, and E5. El. Guit. (Treble) continues the eighth-note chordal pattern. El. Pno. (Treble) plays a series of eighth-note chords.

Measure 16: Vlas. (Bass) plays a static chord of F#4, C#5, and E5. El. Guit. (Treble) continues the eighth-note chordal pattern. El. Pno. (Treble) plays a series of eighth-note chords.

17

17

Vlas.

El. Guit.

El. Pno.

19

19

Vlas.

El. Guit.

El. Pno.

21

21

Vlas.

El. Guit.

El. Pno.

23

23

Vlas.

El. Guit.

El. Pno.

25

The musical score for 'Vlas' is presented in three staves. The top staff, labeled 'Vlas.', is in bass clef with a key signature of one sharp (F#) and contains a whole rest followed by a whole note chord of F#3, A3, and C4. The middle staff, labeled 'El. Guit.', is in treble clef with a key signature of one sharp (F#) and contains a series of eighth and sixteenth note chords, including F#3, A3, and C4. The bottom staff, labeled 'El. Pno.', is in treble clef with a key signature of one sharp (F#) and contains a series of eighth and sixteenth note chords, including F#3, A3, and C4.

27

29

31

35

37

39

59

Vlas.

El. Guit.

El. Pno.

43

45

47

[illegible]

49

49

Vlas.

El. Guit.

El. Pno.

51

51

Vlas.

El. Guit.

El. Pno.

53

53

Vlas.

El. Guit.

El. Pno.

55

55

Vlas.

El. Guit.

El. Pno.

57

Vlas.

El. Guit.

El. Pno.

57

59

Vlas.

El. Guit.

El. Pno.

59

61

Vlas.

El. Guit.

El. Pno.

61

63

Vlas.

El. Guit.

El. Pno.

63