

# **Toward the Horizon (2)**

Composer: Noriyuki Iwadare

Game: Lunar: Silver Star Story Complete

[pianogame.org](http://pianogame.org)

$\text{♩} = 111$

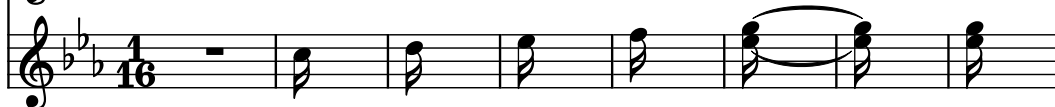
Violins (section), Staff



Violins (section), Staff-2



Rotary Organ, Staff-3

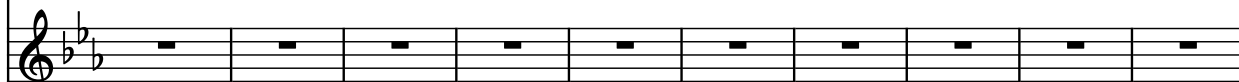


9

Vlms.



Vlms.



Rot. Org.



19

Vlms.



Vlms.



Rot. Org.



29

Vlms.



Vlms.



Rot. Org.



39

Vlms.



Vlms.



Rot. Org.



49

Vlms.

Vlms.

Rot. Org.

Measures 49-58: The first two staves (Vlms.) are empty. The third staff (Rot. Org.) contains a series of chords, mostly sustained across measures.

59

Vlms.

Vlms.

Rot. Org.

Measures 59-68: The first two staves (Vlms.) are empty. The third staff (Rot. Org.) contains a series of chords, mostly sustained across measures.

69

Vlms.

Vlms.

Rot. Org.

Measures 69-78: The first two staves (Vlms.) are empty. The third staff (Rot. Org.) contains a series of chords, mostly sustained across measures.

79

Vlms.

Vlms.

Rot. Org.

Measures 79-88: The first two staves (Vlms.) are empty. The third staff (Rot. Org.) contains a series of chords, mostly sustained across measures.

89

Vlms.

Vlms.

Rot. Org.

Measures 89-98: The first two staves (Vlms.) are empty. The third staff (Rot. Org.) contains a series of chords, mostly sustained across measures.

99

Vlns.

Vlns.

Rot. Org.

109

Vlns.

Vlns.

Rot. Org.

119

Vlns.

Vlns.

Rot. Org.

129

Vlns.

Vlns.

Rot. Org.

139

Vlns.

Vlns.

Rot. Org.

149

Vlns.

Vlns.

Rot. Org.

Measures 149-158. The violin staves play a continuous eighth-note arpeggiated pattern with slurs. The organ staff has whole rests.

159

Vlns.

Vlns.

Rot. Org.

Measures 159-168. The violin staves play a continuous eighth-note arpeggiated pattern with slurs. The organ staff has whole rests.

169

Vlns.

Vlns.

Rot. Org.

Measures 169-178. The violin staves play a continuous eighth-note arpeggiated pattern with slurs. The organ staff has whole rests.

179

Vlns.

Vlns.

Rot. Org.

Measures 179-188. The violin staves play a continuous eighth-note arpeggiated pattern with slurs. The organ staff has whole rests.

189

Vlns.

Vlns.

Rot. Org.

Measures 189-198. The violin staves play a continuous eighth-note arpeggiated pattern with slurs. The organ staff has whole rests.

199

Vlms.

Vlms.

Rot. Org.

Measures 199-208. The first violin part (Vlms.) plays a continuous eighth-note pattern with slurs. The second violin part (Vlms.) has rests for the first measure, then joins the first violin. The rotating organ (Rot. Org.) has rests for all measures.

209

Vlms.

Vlms.

Rot. Org.

Measures 209-218. The first violin part (Vlms.) continues the eighth-note pattern. The second violin part (Vlms.) also continues the eighth-note pattern. The rotating organ (Rot. Org.) has rests for all measures.

219

Vlms.

Vlms.

Rot. Org.

Measures 219-228. The first violin part (Vlms.) continues the eighth-note pattern. The second violin part (Vlms.) also continues the eighth-note pattern. The rotating organ (Rot. Org.) has rests for all measures.

229

Vlms.

Vlms.

Rot. Org.

Measures 229-238. The first violin part (Vlms.) has rests for the first two measures, then continues the eighth-note pattern. The second violin part (Vlms.) has rests for the first two measures, then joins the first violin. The rotating organ (Rot. Org.) has rests for all measures.

239

Vlms.

Vlms.

Rot. Org.

Measures 239-248. The first violin part (Vlms.) continues the eighth-note pattern. The second violin part (Vlms.) also continues the eighth-note pattern. The rotating organ (Rot. Org.) has rests for all measures.

249

Vlns.

Vlns.

Rot. Org.

Violins (Vlns.) and Rot. Org. staves. The Violins play a continuous eighth-note pattern with slurs. The Rot. Org. has whole rests.

259

Vlns.

Vlns.

Rot. Org.

Violins (Vlns.) and Rot. Org. staves. The Violins play a continuous eighth-note pattern with slurs. The Rot. Org. has whole rests.

269

Vlns.

Vlns.

Rot. Org.

Violins (Vlns.) and Rot. Org. staves. The Violins play a continuous eighth-note pattern with slurs. The Rot. Org. has whole rests.

279

Vlns.

Vlns.

Rot. Org.

Violins (Vlns.) and Rot. Org. staves. The Violins play a continuous eighth-note pattern with slurs. The Rot. Org. has whole rests.

289

Vlns.

Vlns.

Rot. Org.

Violins (Vlns.) and Rot. Org. staves. The Violins play a continuous eighth-note pattern with slurs. The Rot. Org. has whole rests.

299

Vlms.

Vlms.

Rot. Org.

309

Vlms.

Vlms.

Rot. Org.

319

Vlms.

Vlms.

Rot. Org.

329

Vlms.

Vlms.

Rot. Org.

339

Vlms.

Vlms.

Rot. Org.



349

Vlns.

Vlns.

Rot. Org.

Violins (Vlns.) play a continuous eighth-note pattern with slurs across measures 349-358. The Rot. Org. has rests for the first four measures, then enters with a similar eighth-note pattern for the next five measures.

359

Vlns.

Vlns.

Rot. Org.

Violins (Vlns.) continue their eighth-note pattern. The Rot. Org. has rests for measures 359-367, then enters in measure 368 with a triplet of eighth notes.

369

Vlns.

Vlns.

Rot. Org.

Violins (Vlns.) have rests for measures 369-372, then enter with eighth notes. The Rot. Org. enters in measure 369 with a triplet of eighth notes and continues for four measures.

379

Vlns.

Vlns.

Rot. Org.

Violins (Vlns.) continue their eighth-note pattern. The Rot. Org. has rests for all measures.

389

Vlms.

Vlms.

Rot. Org.

Measures 389-398. Two Violin staves (Vlms.) play a melodic line with eighth notes and slurs. The Rot. Org. staff has whole rests.

399

Vlms.

Vlms.

Rot. Org.

Measures 399-408. Two Violin staves (Vlms.) play a melodic line with eighth notes and slurs. The Rot. Org. staff has whole rests.

409

Vlms.

Vlms.

Rot. Org.

Measures 409-418. Two Violin staves (Vlms.) play a melodic line with eighth notes and slurs. The Rot. Org. staff has whole rests.

419

Vlms.

Vlms.

Rot. Org.

Measures 419-428. Two Violin staves (Vlms.) play a melodic line with eighth notes and slurs. The Rot. Org. staff has whole rests.

429

Vlms.

Vlms.

Rot. Org.

Measures 429-438. Two Violin staves (Vlms.) play a melodic line with eighth notes and slurs. The Rot. Org. staff has whole rests.

439

Vlms.

Vlms.

Rot. Org.

This system contains measures 439 through 448. The two violin staves (labeled 'Vlms.') play a melodic line consisting of eighth notes, mostly beamed in pairs, with slurs spanning across measures. The rotation organ staff (labeled 'Rot. Org.') is empty, showing only a series of whole rests.

449

Vlms.

Vlms.

Rot. Org.

This system contains measures 449 through 458. The two violin staves (labeled 'Vlms.') continue the melodic line with eighth notes and slurs. The rotation organ staff (labeled 'Rot. Org.') remains empty with whole rests.

459

Vlms.

Vlms.

Rot. Org.

This system contains measures 459 through 468. The two violin staves (labeled 'Vlms.') continue the melodic line with eighth notes and slurs. The rotation organ staff (labeled 'Rot. Org.') remains empty with whole rests.

469

Vlms.

Vlms.

Rot. Org.

This system contains measures 469 through 478. The two violin staves (labeled 'Vlms.') continue the melodic line with eighth notes and slurs. The rotation organ staff (labeled 'Rot. Org.') remains empty with whole rests.

479

Vlms.

Vlms.

Rot. Org.

This system contains measures 479 through 488. The two violin staves (labeled 'Vlms.') continue the melodic line with eighth notes and slurs. The rotation organ staff (labeled 'Rot. Org.') remains empty with whole rests.

489

Vlms.

Vlms.

Rot. Org.

Violins (Vlms.) and Rot. Org. staves. The Violins play a continuous eighth-note pattern with slurs. The Rot. Org. has whole rests.

499

Vlms.

Vlms.

Rot. Org.

Violins (Vlms.) and Rot. Org. staves. The Violins play a continuous eighth-note pattern with slurs. The Rot. Org. has whole rests.

509

Vlms.

Vlms.

Rot. Org.

Violins (Vlms.) and Rot. Org. staves. The Violins play a continuous eighth-note pattern with slurs. The Rot. Org. has whole rests.

519

Vlms.

Vlms.

Rot. Org.

Violins (Vlms.) and Rot. Org. staves. The Violins play a continuous eighth-note pattern with slurs. The Rot. Org. has whole rests.

529

Vlms.

Vlms.

Rot. Org.

Violins (Vlms.) and Rot. Org. staves. The Violins play a continuous eighth-note pattern with slurs. The Rot. Org. has whole rests.

539

Vlms.

Vlms.

Rot. Org.

Violins (Vlms.) and Rot. Org. (Rot. Org.) staves. The Violins play a continuous eighth-note pattern with slurs. The Rot. Org. plays whole rests.

549

Vlms.

Vlms.

Rot. Org.

Violins (Vlms.) and Rot. Org. (Rot. Org.) staves. The Violins play a continuous eighth-note pattern with slurs. The Rot. Org. plays whole rests.

559

Vlms.

Vlms.

Rot. Org.

Violins (Vlms.) and Rot. Org. (Rot. Org.) staves. The Violins play a continuous eighth-note pattern with slurs. The Rot. Org. plays whole rests.