

Outside

Composer: Kazumi Totaka

Game: Luigi's Mansion

pianogame.org

$\text{♩} = 100$

System 1: Treble and bass staves in 4/4 time, key of D major. The treble staff has a continuous eighth-note melody, while the bass staff has whole rests.

5

System 2: Treble and bass staves in 4/4 time, key of D major. The treble staff continues the eighth-note melody, and the bass staff has whole rests.

9

System 3: Treble and bass staves in 4/4 time, key of D major. The treble staff has a more complex melody with some accidentals, and the bass staff has a corresponding eighth-note line.

12

System 4: Treble and bass staves in 4/4 time, key of D major. The treble staff has a complex melody with many accidentals, and the bass staff has a corresponding eighth-note line.

14

System 5: Treble and bass staves in 4/4 time, key of D major. The treble staff has a complex melody with many accidentals, and the bass staff has a corresponding eighth-note line. A triplet of eighth notes is marked in the bass staff.

16

System 6: Treble and bass staves in 4/4 time, key of D major. The treble staff has a complex melody with many accidentals, and the bass staff has a corresponding eighth-note line.

Measures 19-22 of a musical score in A major (three sharps). The right hand plays a continuous eighth-note melody, while the left hand plays a simple bass line with occasional rests.

Measures 23-26 of the musical score. The right hand continues the eighth-note melody, and the left hand provides a steady bass accompaniment.

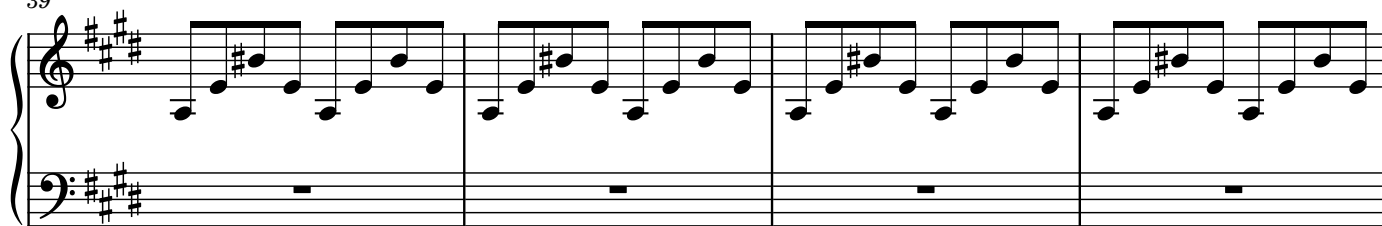
Measures 27-30 of the musical score. The right hand melody continues, and the left hand features a more active bass line, including a short melodic phrase in measures 29 and 30.

Measures 31-32 of the musical score. The right hand melody continues, and the left hand features a more active bass line, including a short melodic phrase in measures 31 and 32.

Measures 33-35 of the musical score. The right hand melody continues, and the left hand features a more active bass line, including a short melodic phrase in measures 33 and 34. A triplet of eighth notes is marked in measure 35.

Measures 36-38 of the musical score. The right hand melody continues, and the left hand features a more active bass line, including a short melodic phrase in measures 36 and 37. A triplet of eighth notes is marked in measure 38.

39



43

