

Cradle (5)

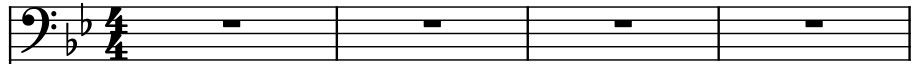
Composer: Grant Kirkhope

Game: GoldenEye 007

pianogame.org

♩ = 192

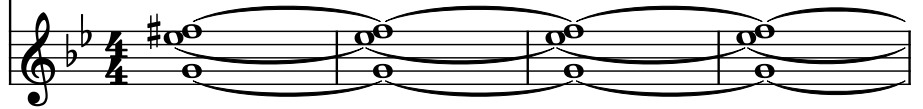
5-str. Electric Bass, Fingered Bass



Grand Piano, Electric Grand Piano

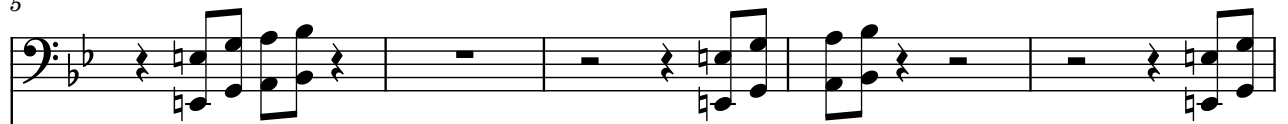


Strings, String Ensemble 2



5

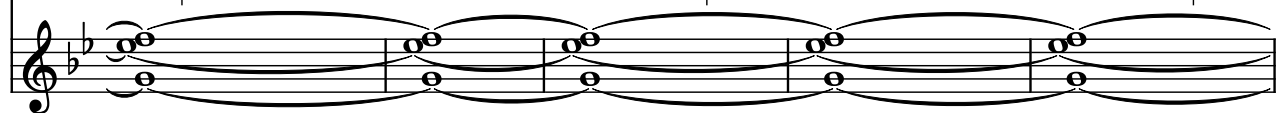
El. B.



Pno.



St.



10

El. B.



Pno.



St.



14

El. B.

Pno.

St.

17

El. B.

Pno.

St.

21

El. B.

Pno.

St.

25

El. B.

Pno.

St.

25 26 27 28

29

El. B.

Pno.

St.

29 30 31 32

33

El. B.

Pno.

St.

33 34 35 36

37

El. B.

Pno.

St.

El. B. part: Bass clef, B-flat major key signature. Measures 37-40 show a steady eighth-note pattern.

Pno. part: Bass clef, B-flat major key signature. Measures 37-40 show a steady eighth-note pattern.

St. part: Treble clef, B-flat major key signature. Measures 37-40 show a steady eighth-note pattern.

41

El. B.

Pno.

St.

El. B. part: Bass clef, B-flat major key signature. Measures 41-44 show a steady eighth-note pattern.

Pno. part: Bass clef, B-flat major key signature. Measures 41-44 show a steady eighth-note pattern.

St. part: Treble clef, B-flat major key signature. Measures 41-44 show a steady eighth-note pattern.

45

El. B.

Pno.

St.

El. B. part: Bass clef, B-flat major key signature. Measures 45-48 show a steady eighth-note pattern.

Pno. part: Bass clef, B-flat major key signature. Measures 45-48 show a steady eighth-note pattern.

St. part: Treble clef, B-flat major key signature. Measures 45-48 show a steady eighth-note pattern.

49

El. B.

Pno.

St.

El. B. part: Bass clef, B-flat major key signature. Measures 49-52 show a rhythmic pattern of eighth and sixteenth notes.

Pno. part: Bass clef, B-flat major key signature. Measures 49-52 show a rhythmic pattern of eighth and sixteenth notes.

St. part: Treble clef, B-flat major key signature. Measures 49-52 show a rhythmic pattern of eighth and sixteenth notes.

53

El. B.

Pno.

St.

El. B. part: Bass clef, B-flat major key signature. Measures 53-56 show a rhythmic pattern of eighth and sixteenth notes.

Pno. part: Bass clef, B-flat major key signature. Measures 53-56 show a rhythmic pattern of eighth and sixteenth notes.

St. part: Treble clef, B-flat major key signature. Measures 53-56 show a rhythmic pattern of eighth and sixteenth notes.

57

El. B.

Pno.

St.

El. B. part: Bass clef, B-flat major key signature. Measures 57-60 show a rhythmic pattern of eighth and sixteenth notes.

Pno. part: Bass clef, B-flat major key signature. Measures 57-60 show a rhythmic pattern of eighth and sixteenth notes.

St. part: Treble clef, B-flat major key signature. Measures 57-60 show a rhythmic pattern of eighth and sixteenth notes.

61

El. B.

Pno.

St.

65

El. B.

Pno.

St.

69

El. B.

Pno.

St.

73

El. B.

Pno.

St.

73 74 75 76

77

El. B.

Pno.

St.

77 78 79 80

81

El. B.

Pno.

St.

81 82 83 84

85

El. B.

Pno.

St.

85 86 87 88

89

El. B.

Pno.

St.

89 90 91 92

93

El. B.

Pno.

St.

93 94 95 96

97

El. B.

Pno.

St.

104

El. B.

Pno.

St.

109

El. B.

Pno.

St.

113

El. B.

Pno.

St.

117

El. B.

Pno.

St.

121

El. B.

Pno.

St.

125

El. B.

Pno.

St.

129

El. B.

Pno.

St.

133

El. B.

Pno.

St.

137

El. B.

Pno.

St.

El. B. part: Bass clef, B-flat major. Measures 137-140 show a rhythmic pattern of eighth and sixteenth notes.

Pno. part: Grand staff, B-flat major. Measures 137-140 show a complex pattern of eighth and sixteenth notes.

St. part: Treble clef, B-flat major. Measures 137-140 show mostly silent staves with some low notes in the first two measures.

141

El. B.

Pno.

St.

El. B. part: Bass clef, B-flat major. Measures 141-144 show a rhythmic pattern of eighth and sixteenth notes.

Pno. part: Grand staff, B-flat major. Measures 141-144 show a complex pattern of eighth and sixteenth notes.

St. part: Treble clef, B-flat major. Measures 141-144 show mostly silent staves with some low notes in the first two measures.

145

El. B.

Pno.

St.

El. B. part: Bass clef, B-flat major. Measures 145-148 show a rhythmic pattern of eighth and sixteenth notes.

Pno. part: Grand staff, B-flat major. Measures 145-148 show a complex pattern of eighth and sixteenth notes.

St. part: Treble clef, B-flat major. Measures 145-148 show mostly silent staves with some low notes in the first two measures.

149

El. B.

Pno.

St.

153

El. B.

Pno.

St.

157

El. B.

Pno.

St.

161

El. B.

Pno.

St.

165

El. B.

Pno.

St.

169

El. B.

Pno.

St.

173

El. B.

Pno.

St.

El. B. part: Bass clef, B-flat major key signature. Measures 173-176 show a continuous eighth-note pattern.

Pno. part: Grand staff (treble and bass clefs), B-flat major key signature. Measures 173-176 show a continuous eighth-note pattern.

St. part: Treble clef, B-flat major key signature. Measures 173-176 show a continuous eighth-note pattern.

177

El. B.

Pno.

St.

El. B. part: Bass clef, B-flat major key signature. Measures 177-180 show a continuous eighth-note pattern.

Pno. part: Grand staff (treble and bass clefs), B-flat major key signature. Measures 177-180 show a continuous eighth-note pattern.

St. part: Treble clef, B-flat major key signature. Measures 177-180 show a continuous eighth-note pattern.

181

El. B.

Pno.

St.

El. B. part: Bass clef, B-flat major key signature. Measures 181-184 show a continuous eighth-note pattern.

Pno. part: Grand staff (treble and bass clefs), B-flat major key signature. Measures 181-184 show a continuous eighth-note pattern.

St. part: Treble clef, B-flat major key signature. Measures 181-184 show a continuous eighth-note pattern.

185

El. B.

Pno.

St.

El. B. staff: Continuous eighth-note melody in B-flat major.

Pno. staff: Continuous eighth-note accompaniment in B-flat major.

St. staff: Single note (B-flat) held for the duration of the four measures.

189

El. B.

Pno.

St.

El. B. staff: Continuous eighth-note melody in B-flat major.

Pno. staff: Continuous eighth-note accompaniment in B-flat major.

St. staff: Single note (B-flat) held for the duration of the four measures.

193

El. B.

Pno.

St.

El. B. staff: Melody starting in measure 195.

Pno. staff: Melody starting in measure 195.

St. staff: Continuous eighth-note accompaniment in B-flat major.

200

El. B.

Pno.

St.

El. B. part: Measures 200-204. The bass line starts with a half note G2, followed by eighth notes A2, Bb2, and C3. It continues with a series of eighth and sixteenth notes, including D3, Eb3, F3, and G3, ending with a half note G3.

Pno. part: Measures 200-204. The right hand plays a sequence of eighth notes: G4, A4, Bb4, C5, D5, Eb5, F5, and G5. The left hand plays a more complex pattern of sixteenth notes, including G3, A3, Bb3, C4, D4, Eb4, F4, and G4.

St. part: Measures 200-204. The strings play sustained, overlapping chords in the upper register, held with long slurs.

205

El. B.

Pno.

St.

El. B. part: Measures 205-209. The bass line continues with eighth and sixteenth notes, including A3, Bb3, C4, D4, Eb4, F4, and G4, ending with a half note G4.

Pno. part: Measures 205-209. The right hand continues with eighth notes: A4, Bb4, C5, D5, Eb5, F5, and G5. The left hand continues with sixteenth notes, including G3, A3, Bb3, C4, D4, Eb4, F4, and G4.

St. part: Measures 205-209. The strings continue with sustained, overlapping chords in the upper register, held with long slurs.