

# **The Story of a Lost Love**

Composer: Kouichi Yamanishi

Game: Battle of Olympus

[pianogame.org](http://pianogame.org)

♩ = 145

Measures 1-7 of a musical score in 4/4 time, key of B-flat major. The tempo is marked as ♩ = 145. The right hand features a melody with dotted half notes and quarter notes, while the left hand provides a steady eighth-note accompaniment.

8

Measures 8-13 of the musical score. The right hand continues the melody with some rests, and the left hand maintains the eighth-note accompaniment.

14

Measures 14-19 of the musical score. The right hand introduces a new melodic line, and the left hand continues the accompaniment.

20

Measures 20-26 of the musical score. The right hand has whole rests, and the left hand continues the eighth-note accompaniment.

27

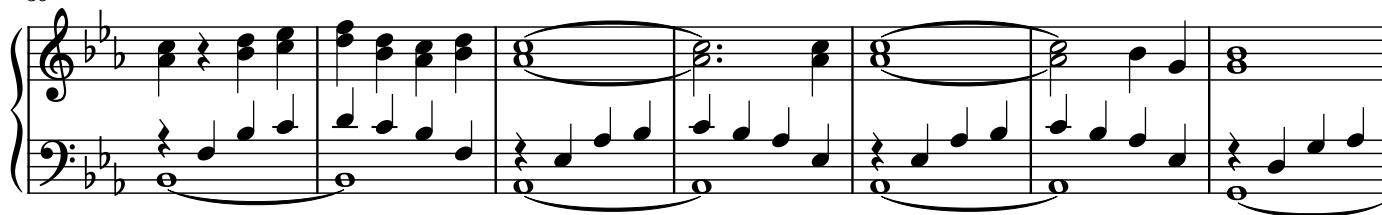
Measures 27-33 of the musical score. The right hand has whole rests until measure 33, where it begins a new melodic line. The left hand continues the accompaniment.

34

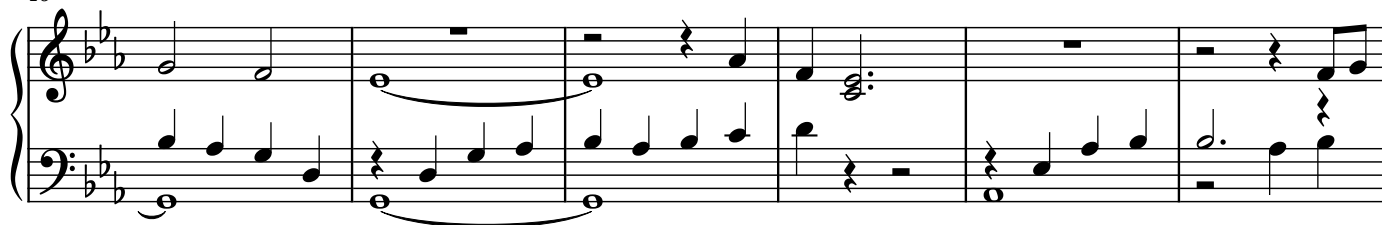
Measures 34-39 of the musical score. The right hand features a series of chords and a melodic line, while the left hand continues the accompaniment.

2

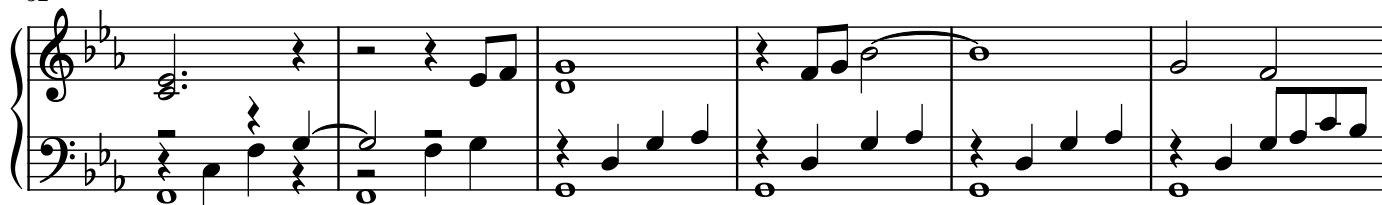
39



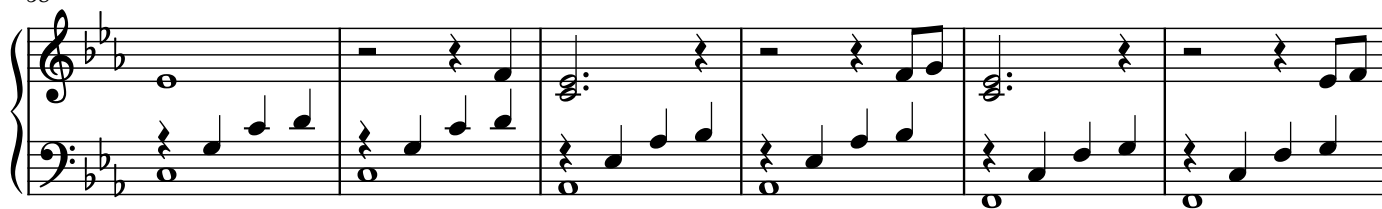
46



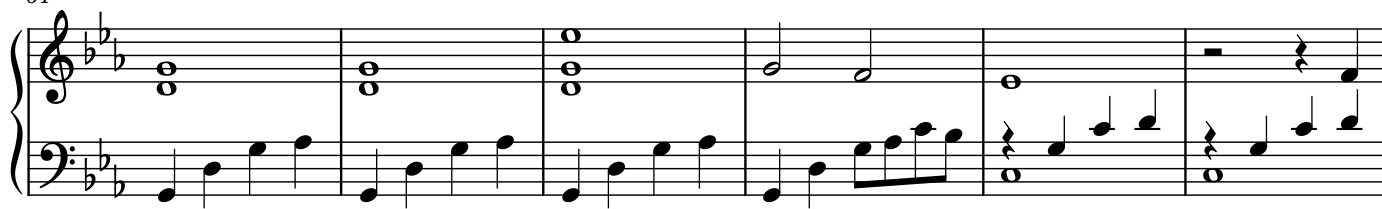
52



58



64



70



77

