

Level 1

Composer: Toshiyuki Sasagawa

Game: Super Aleste

pianogame.org

♩ = 135

4/4

4

8

10

11

15

18

19

22

28

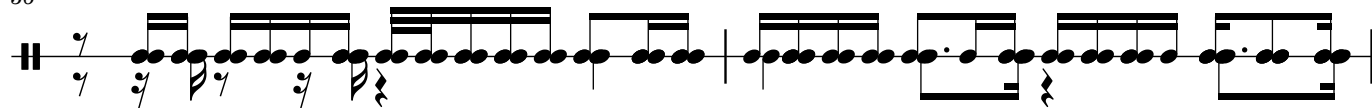
31

32

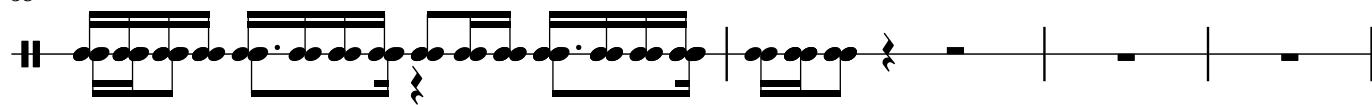
33

2

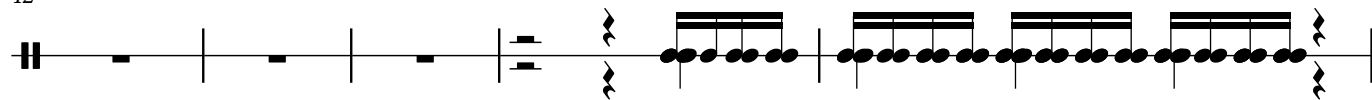
36



38



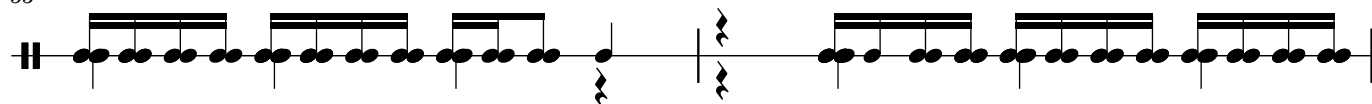
42



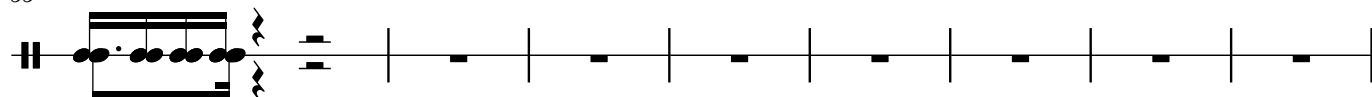
47



53



55



63



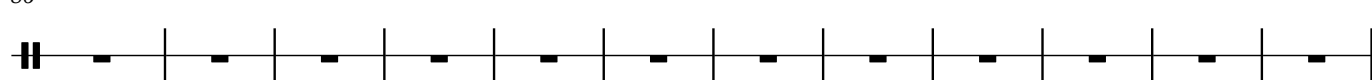
75



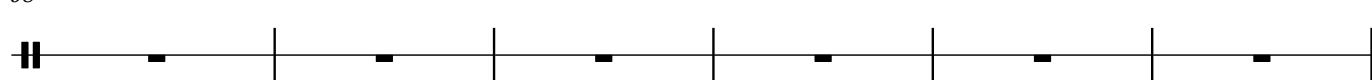
80



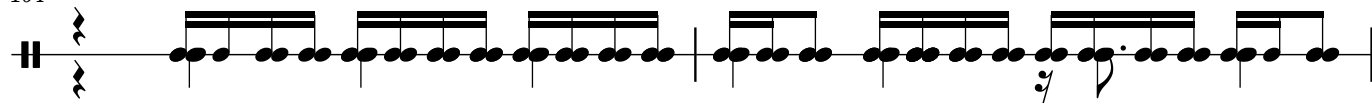
86



98



104



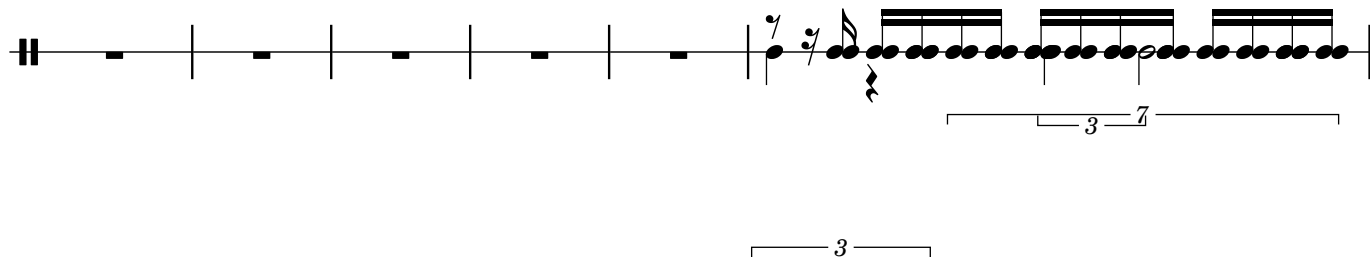
106



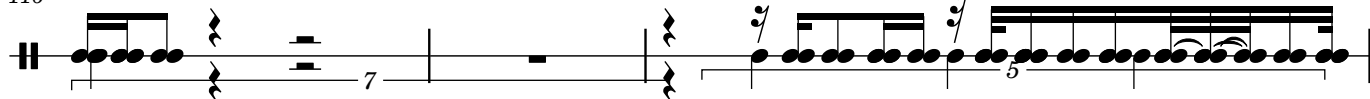
107



110



116



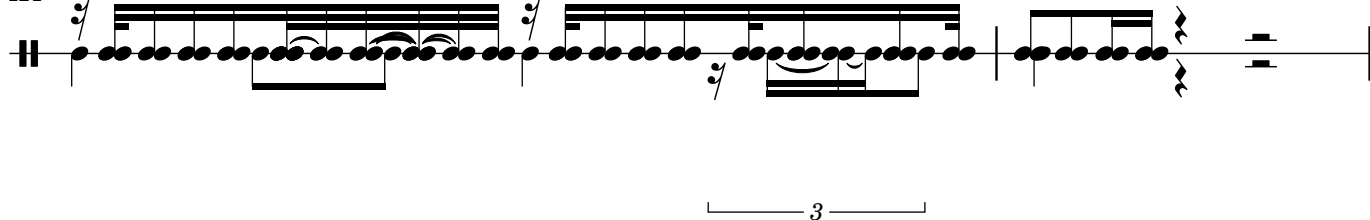
119



120



121



4
123

Staff 123-124: This staff contains measures 123 and 124. Measure 123 begins with a whole rest, followed by a quarter rest, and then a series of eighth notes. Measure 124 continues the eighth-note pattern, ending with a triplet of eighth notes. Below the staff, there are two bracketed groups: the first group under measure 123 is labeled '7', and the second group under measure 124 is labeled '7' followed by a bracketed triplet labeled '3'.

Staff 125-126: This staff contains measures 125 and 126. Measure 125 starts with a quarter rest, followed by eighth notes, and ends with a triplet of eighth notes. Measure 126 continues the eighth-note pattern. Below the staff, there are two bracketed groups, both labeled '7', spanning measures 125 and 126 respectively.

Staff 127-128: This staff contains measures 127 and 128. Measure 127 is a full measure of eighth notes, ending with a triplet of eighth notes. Measure 128 continues the eighth-note pattern. Below the staff, there are three bracketed groups: the first is labeled '7' and spans measures 127-128; the second is labeled '7' and spans measures 127-128; the third is labeled '7' and spans measures 127-128. Additionally, there is a bracketed triplet labeled '3' under measure 127.

Staff 129-130: This staff contains measures 129 and 130. Measure 129 begins with a whole rest, followed by a quarter rest, and then eighth notes. Measure 130 continues the eighth-note pattern. Below the staff, there are two bracketed groups, both labeled '7', spanning measures 129 and 130 respectively.

Staff 131-132: This staff contains measures 131 and 132. Measure 131 starts with a quarter rest, followed by eighth notes, and ends with a triplet of eighth notes. Measure 132 continues the eighth-note pattern. Below the staff, there are two bracketed groups, both labeled '7', spanning measures 131 and 132 respectively.

134

135

140

145

147

148

151

153

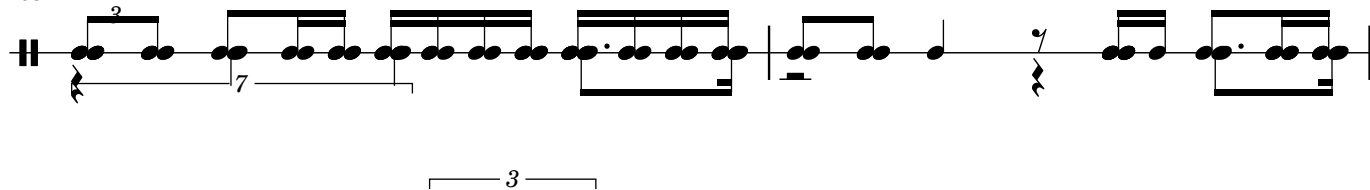
156

6

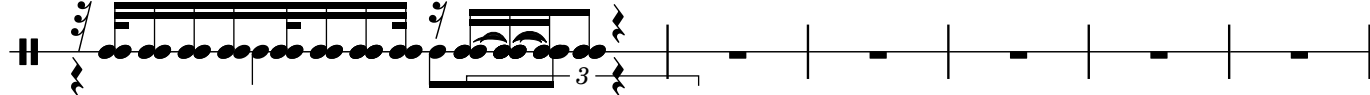
162



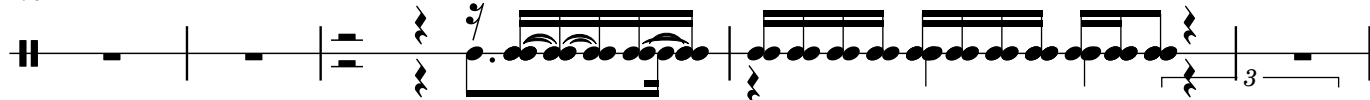
168



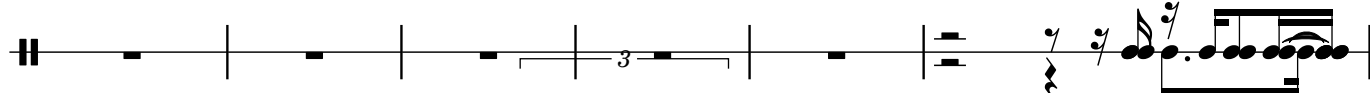
170



176



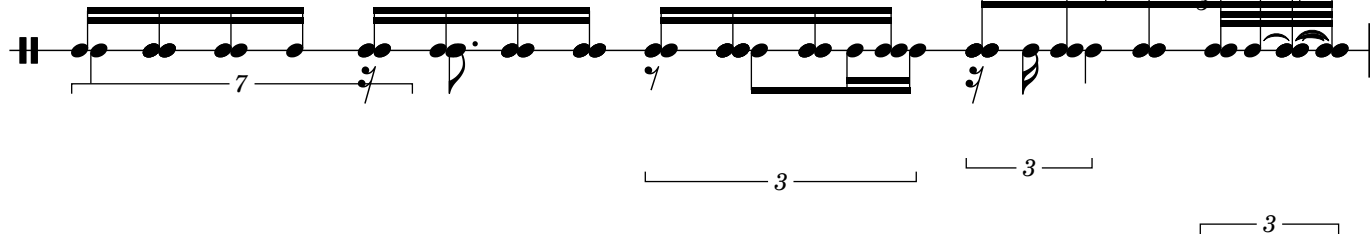
181



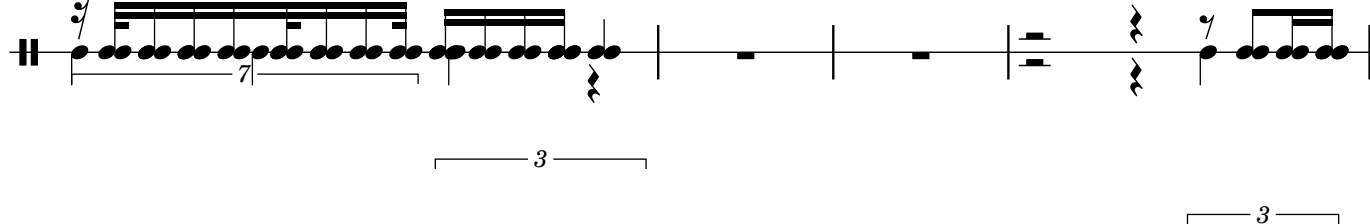
187



189



190



194

