

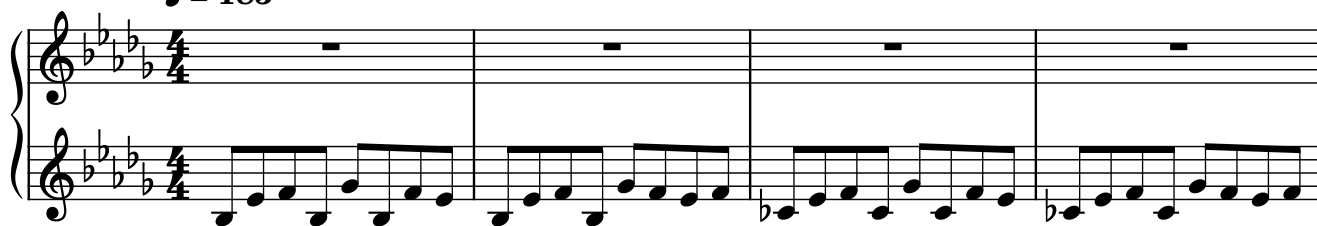
Level 3

Composer: Rob Hubbard

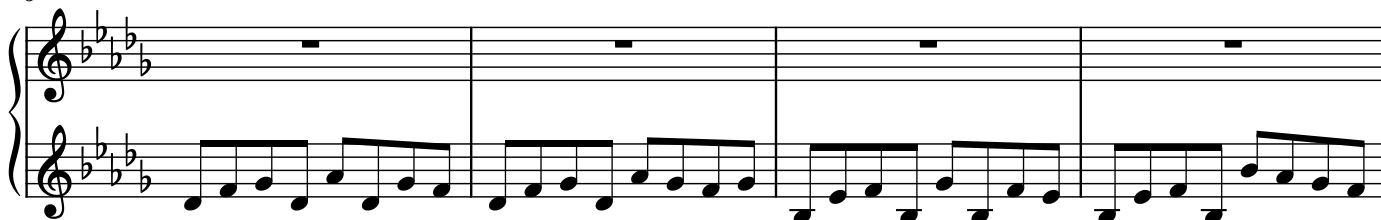
Game: Logical

pianogame.org

♩ = 185



5



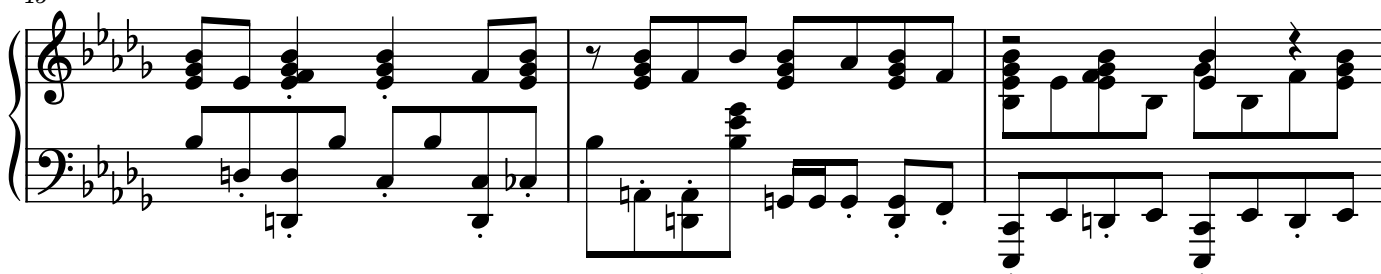
9



12



15



18



21

Measures 21-24 of a musical score in B-flat major (three flats). The piece is in 3/4 time. Measures 21 and 23 feature a treble clef with a whole note chord and a half note melody. Measures 22 and 24 feature a bass clef with a whole note chord and a half note melody. The bass line consists of a steady eighth-note accompaniment.

25

Measures 25-26 of a musical score in B-flat major (three flats). The piece is in 3/4 time. Measure 25 features a treble clef with a whole note chord and a half note melody. Measure 26 features a bass clef with a whole note chord and a half note melody. The bass line consists of a steady eighth-note accompaniment.

27

Measures 27-29 of a musical score in B-flat major (three flats). The piece is in 3/4 time. Measures 27 and 29 feature a treble clef with a whole note chord and a half note melody. Measures 28 and 30 feature a bass clef with a whole note chord and a half note melody. The bass line consists of a steady eighth-note accompaniment.

30

Measures 30-32 of a musical score in B-flat major (three flats). The piece is in 3/4 time. Measures 30 and 32 feature a treble clef with a whole note chord and a half note melody. Measures 31 and 33 feature a bass clef with a whole note chord and a half note melody. The bass line consists of a steady eighth-note accompaniment.

33

Measures 33 and 34 of a musical score. The key signature has three flats (B-flat, E-flat, A-flat). The score is written for piano with a grand staff (treble and bass clefs). Measure 33 features a complex texture with multiple chords and moving lines in both hands. Measure 34 continues this texture with some notes marked with a 'z' (possibly indicating a grace note or a specific articulation).

35

Measures 35 and 36 of a musical score. The key signature remains three flats. Measure 35 shows a continuation of the complex texture. Measure 36 features a large, sustained chord in the right hand, with a 'z' marking above it, and a more active line in the left hand.

37

Measures 37 and 38 of a musical score. The key signature remains three flats. Measure 37 shows a continuation of the complex texture. Measure 38 features a large, sustained chord in the right hand, with a 'z' marking above it, and a more active line in the left hand.

39

Measures 39 and 40 of a musical score. The key signature remains three flats. Measure 39 shows a continuation of the complex texture. Measure 40 features a large, sustained chord in the right hand, with a 'z' marking above it, and a more active line in the left hand.

41

Measures 41 and 42 of a musical score. The key signature has three flats (B-flat, E-flat, A-flat). The score is written for piano with a grand staff (treble and bass clefs). Measure 41 features a complex texture with multiple chords and moving lines in both hands. Measure 42 continues this texture with some rests and sustained notes.

43

Measures 43 and 44 of a musical score. The key signature remains three flats. Measure 43 shows a continuation of the complex harmonic texture. Measure 44 features a more active bass line with eighth notes and a sustained treble line.

45

Measures 45, 46, and 47 of a musical score. The key signature remains three flats. Measure 45 has a complex texture. Measure 46 features a more active bass line with eighth notes. Measure 47 continues the complex texture with multiple chords and moving lines.

48

Measures 48, 49, and 50 of a musical score. The key signature remains three flats. Measure 48 features a complex texture. Measure 49 has a more active bass line with eighth notes. Measure 50 continues the complex texture with multiple chords and moving lines.

51

Measures 51-52 of a musical score. The piece is in 3/4 time with a key signature of three flats (B-flat, E-flat, A-flat). The score is written for piano with a grand staff (treble and bass clefs). Measure 51 features a complex texture with multiple chords and moving lines in both hands. Measure 52 continues this texture, ending with a final chord in the right hand.

53

Measures 53-54 of a musical score. The piece is in 3/4 time with a key signature of three flats (B-flat, E-flat, A-flat). The score is written for piano with a grand staff. Measure 53 shows a continuation of the harmonic and melodic themes from the previous measures. Measure 54 concludes the system with a final chord in the right hand.

55

Measures 55-56 of a musical score. The piece is in 3/4 time with a key signature of three flats (B-flat, E-flat, A-flat). The score is written for piano with a grand staff. Measure 55 features a continuation of the complex texture. Measure 56 concludes the system with a final chord in the right hand.

57

Measures 57-58 of a musical score. The piece is in 3/4 time with a key signature of three flats (B-flat, E-flat, A-flat). The score is written for piano with a grand staff. Measure 57 shows a continuation of the harmonic and melodic themes. Measure 58 concludes the system with a final chord in the right hand.

59

System 1 (Measures 59-61): The right hand features a melodic line with eighth and sixteenth notes, including a triplet in measure 60. The left hand provides a harmonic accompaniment with chords and moving lines in the bass and tenor registers.

62

System 2 (Measures 62-64): The right hand continues the melodic development with more complex rhythmic patterns. The left hand maintains a steady accompaniment, with some measures featuring sustained chords.

65

System 3 (Measures 65-66): This system shows a continuation of the musical themes. The right hand has a more active role with moving lines, while the left hand provides a solid harmonic base.

67

System 4 (Measures 67-69): The final system on the page. It features a prominent melodic phrase in the right hand that spans across measures, supported by a complex and active left hand accompaniment.

69

Measures 69-70 of a musical score in E-flat major (three flats). The piece is in 4/4 time. Measure 69 features a complex texture with multiple sixteenth-note runs in both the treble and bass staves, including triplets. Measure 70 continues with similar rhythmic activity, featuring a descending sixteenth-note line in the bass and a more active treble part.

71

Measures 71-72. Measure 71 shows a continuation of the sixteenth-note patterns, with a prominent triplet in the treble. Measure 72 introduces a change with a more sustained bass line and a treble part featuring eighth-note chords and a final triplet.

73

Measures 73-74. Measure 73 features a descending sixteenth-note line in the bass and a treble part with eighth-note chords. Measure 74 continues with a similar bass line and a treble part that includes a triplet and a final chord.

75

Measures 75-76. Measure 75 shows a descending sixteenth-note line in the bass and a treble part with eighth-note chords. Measure 76 continues with a similar bass line and a treble part that includes a triplet and a final chord.

77

Measures 77-78 of a musical score in B-flat major (three flats). The system consists of two staves. The upper staff features a treble clef and contains a series of chords and single notes, including a triplet of eighth notes in measure 78. The lower staff features a bass clef and contains a series of chords and single notes, including a triplet of eighth notes in measure 78. The key signature is B-flat major (three flats).

79

Measures 79-81 of a musical score in B-flat major (three flats). The system consists of two staves. The upper staff features a treble clef and contains a series of chords and single notes, including a triplet of eighth notes in measure 81. The lower staff features a bass clef and contains a series of chords and single notes, including a triplet of eighth notes in measure 81. The key signature is B-flat major (three flats).

82

Measures 82-83 of a musical score in B-flat major (three flats). The system consists of two staves. The upper staff features a treble clef and contains a series of chords and single notes, including a triplet of eighth notes in measure 83. The lower staff features a bass clef and contains a series of chords and single notes, including a triplet of eighth notes in measure 83. The key signature is B-flat major (three flats).

84

Measures 84-85 of a musical score in B-flat major (three flats). The system consists of two staves. The upper staff features a treble clef and contains a series of chords and single notes, including a triplet of eighth notes in measure 85. The lower staff features a bass clef and contains a series of chords and single notes, including a triplet of eighth notes in measure 85. The key signature is B-flat major (three flats).

86

Measures 86-87 of a musical score. The key signature has four flats (B-flat, E-flat, A-flat, D-flat). The time signature is 3/4. The score is written for piano with a grand staff (treble and bass clefs). Measure 86 features a complex texture with multiple chords and moving lines in both hands. Measure 87 continues this texture with some rests and sustained notes.

88

Measures 88-89 of a musical score. The key signature has four flats. Measure 88 shows a continuation of the complex harmonic texture. Measure 89 features a prominent chord in the right hand and a more active bass line.

90

Measures 90-91 of a musical score. The key signature has four flats. Measure 90 has a more melodic line in the right hand. Measure 91 features a complex chordal structure in the right hand and a steady bass line.

92

Measures 92-95 of a musical score. The key signature has four flats. Measure 92 features a complex texture with many notes in both hands. Measure 93 has a more active right hand. Measure 94 features a complex chordal structure. Measure 95 continues the complex texture with many notes in both hands.

95

Measures 95-97 of a musical score in E-flat major (three flats). The piece is in 4/4 time. Measure 95 features a treble staff with a half note G4, a quarter note A4, and a half note Bb4, with a descending eighth-note accompaniment in the bass staff. Measure 96 continues the treble staff with a half note C5, a quarter note D5, and a half note E5, with a similar descending eighth-note accompaniment. Measure 97 shows a treble staff with a half note F5, a quarter note G5, and a half note A5, with a descending eighth-note accompaniment. The bass staff in all three measures features a steady eighth-note accompaniment.

98

Measures 98-100 of the musical score. Measure 98 has a treble staff with a half note Bb4, a quarter note C5, and a half note D5, with a descending eighth-note accompaniment. Measure 99 continues with a treble staff half note E5, quarter note F5, and half note G5, with a descending eighth-note accompaniment. Measure 100 features a treble staff half note A5, quarter note Bb5, and half note C6, with a descending eighth-note accompaniment. The bass staff continues with a steady eighth-note accompaniment.

100

Measures 100-102 of the musical score. Measure 100 has a treble staff with a half note D5, a quarter note E5, and a half note F5, with a descending eighth-note accompaniment. Measure 101 continues with a treble staff half note G5, quarter note A5, and half note Bb5, with a descending eighth-note accompaniment. Measure 102 features a treble staff half note C6, quarter note D6, and half note E6, with a descending eighth-note accompaniment. The bass staff continues with a steady eighth-note accompaniment.

102

Measures 102-104 of the musical score. Measure 102 has a treble staff with a half note F5, a quarter note G5, and a half note A5, with a descending eighth-note accompaniment. Measure 103 continues with a treble staff half note Bb5, quarter note C6, and half note D6, with a descending eighth-note accompaniment. Measure 104 features a treble staff half note E6, quarter note F6, and half note G6, with a descending eighth-note accompaniment. The bass staff continues with a steady eighth-note accompaniment.

104

Measures 104-106 of a musical score in E-flat major (three flats). The piece is in 4/4 time. Measure 104 features a complex piano introduction with multiple chords and a melodic line in the right hand. Measures 105 and 106 show a more straightforward progression with sustained chords in the left hand and moving lines in the right hand.

107

Measures 107-110. The music continues with a consistent harmonic pattern. The right hand plays a series of eighth and quarter notes, while the left hand provides a steady accompaniment of chords and single notes.

111

Measures 111-114. This section introduces more rhythmic variation with eighth notes and rests in the right hand. The left hand continues to support the melody with harmonic accompaniment.

115

Measures 115-117. The musical texture remains consistent, with the right hand carrying the primary melody and the left hand providing harmonic support through chords and moving lines.

118

Measures 118-121, the final measures on this page. The piece concludes with a series of chords and melodic fragments in both hands, ending on a final chord in the right hand.