

# Children Playing in the Fields

Composer: Miki Higashino

Game: Suikoden 2

[pianogame.org](http://pianogame.org)

♩ = 120

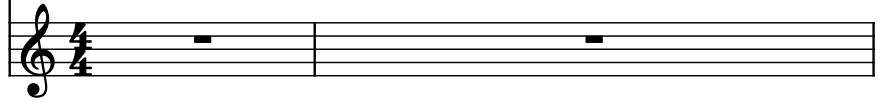
Irish Tenor Banjo, Banjo



Honky Tonk Piano, Honkey-tonk Piano



Flute, Flute



3

ITB



Hnk. Pno.



Fl.



6

ITB



Hnk. Pno.



Fl.

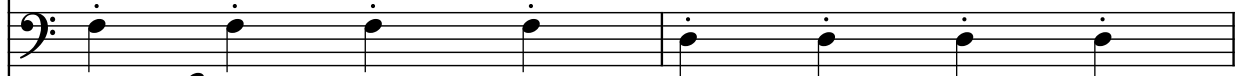


9

ITB



Hnk. Pno.



Fl.



11

ITB

Hnk. Pno.

Fl.

8

13

ITB

Hnk. Pno.

Fl.

8

15

ITB

Hnk. Pno.

Fl.

8

18

ITB

Hnk. Pno.

Fl.

8

21

ITB

Hnk. Pno.

Fl.

8

24

ITB

Hnk. Pno.

Fl.

8

27

ITB

Hnk. Pno.

Fl.

8

30

ITB

Hnk. Pno.

Fl.

8

♪ = 80  
♪ = 85  
♪ = 90  
♪ = 95  
♪ = 100  
♪ = 105  
♪ = 110  
♪ = 115

34

ITB

Hnk. Pno.

Fl.

8

44  $\text{♩} = 120$

ITB

Hnk. Pno.

Fl.

$\text{♩} = 80$   
 $\text{♩} = 85$   
 $\text{♩} = 90$   
 $\text{♩} = 95$   
 $\text{♩} = 100$   
 $\text{♩} = 105$   
 $\text{♩} = 110$   
 $\text{♩} = 115$

54  $\text{♩} = 120$

ITB

Hnk. Pno.

Fl.

59

ITB

Hnk. Pno.

Fl.

62

ITB

Hnk. Pno.

Fl.

64

ITB

Hnk. Pno.

Fl.

8

66

ITB

Hnk. Pno.

Fl.

8

68

ITB

Hnk. Pno.

Fl.

8

70

ITB

Hnk. Pno.

Fl.

8

73

ITB

Hnk. Pno.

Fl.

Measures 73-75: ITB (Treble clef, 8/8) plays a continuous eighth-note pattern. Hnk. Pno. (Bass clef) plays a bass line with dotted half notes and quarter notes. Fl. (Treble clef) has whole rests.

76

ITB

Hnk. Pno.

Fl.

Measures 76-78: ITB (Treble clef, 8/8) continues with eighth notes. Hnk. Pno. (Bass clef) continues with a similar bass line. Fl. (Treble clef) has whole rests.

79

ITB

Hnk. Pno.

Fl.

Measures 79-81: ITB (Treble clef, 8/8) continues with eighth notes. Hnk. Pno. (Bass clef) continues with a similar bass line. Fl. (Treble clef) has whole rests.

82

ITB

Hnk. Pno.

Fl.

Measures 82-84: ITB (Treble clef, 8/8) continues with eighth notes. Hnk. Pno. (Bass clef) continues with a similar bass line. Fl. (Treble clef) has whole rests.

85

ITB

Hnk. Pno.

Fl.

Measures 85-87: ITB (Treble clef, 8/8) continues with eighth notes. Hnk. Pno. (Bass clef) continues with a similar bass line. Fl. (Treble clef) has whole rests.