

Marble Garden Zone: Act 1 (7)

Composer: Brad Buxer

Game: Sonic the Hedgehog 3

pianogame.org

♩ = 108

5-str. Electric Bass, Slap Bass 1

Bass Guitar, Electric Bass

Tuned Klaxon Horns, Charang

2

El. B.

B. Guit.

Tn. Klx. Hns.

4

El. B.

B. Guit.

Tn. Klx. Hns.

6

El. B.

B. Guit.

Tn. Klx. Hns.

This musical system covers measures 6 and 7. It features three staves: Electric Bass (El. B.), Bass Guitar (B. Guit.), and Piano/Keyboard/Harp (Tn. Klx. Hns.). The key signature is three sharps (F#, C#, G#). Measures 6 and 7 are marked with a repeat sign. In measure 6, the El. B. and B. Guit. staves play a triplet of eighth notes (F#, C#, G#) followed by a quarter note (F#). The Tn. Klx. Hns. staff has a whole rest. In measure 7, the El. B. and B. Guit. staves play a quarter note (F#) followed by a triplet of eighth notes (C#, G#, F#). The Tn. Klx. Hns. staff plays a quarter note (F#) followed by a triplet of eighth notes (C#, G#, F#).

8

El. B.

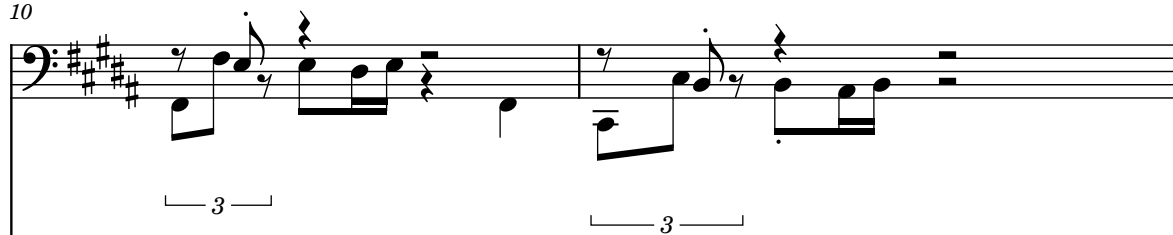
B. Guit.

Tn. Klx. Hns.

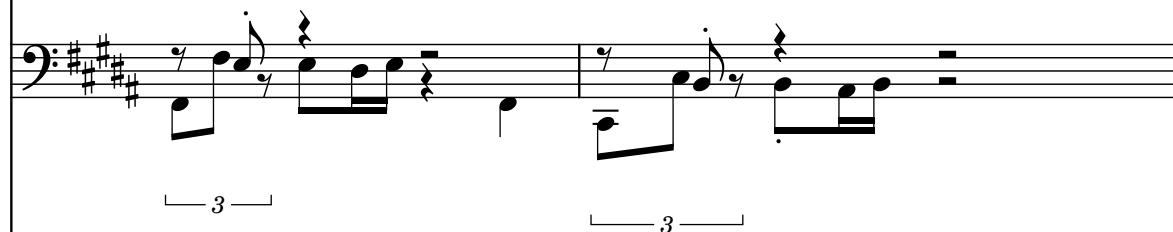
This musical system covers measures 8 and 9. It features three staves: Electric Bass (El. B.), Bass Guitar (B. Guit.), and Piano/Keyboard/Harp (Tn. Klx. Hns.). The key signature is three sharps (F#, C#, G#). Measures 8 and 9 are marked with a repeat sign. In measure 8, the El. B. and B. Guit. staves play a triplet of eighth notes (F#, C#, G#) followed by a quarter note (F#). The Tn. Klx. Hns. staff has a whole rest. In measure 9, the El. B. and B. Guit. staves play a quarter note (F#) followed by a triplet of eighth notes (C#, G#, F#). The Tn. Klx. Hns. staff plays a quarter note (F#) followed by a triplet of eighth notes (C#, G#, F#).

10

El. B.



B. Guit.



Tn. Klx. Hns.

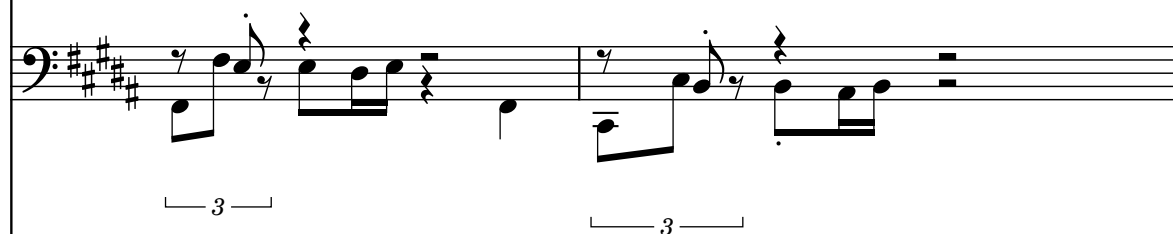


12

El. B.



B. Guit.



Tn. Klx. Hns.



14

El. B.

B. Guit.

Tn. Klx. Hns.

16

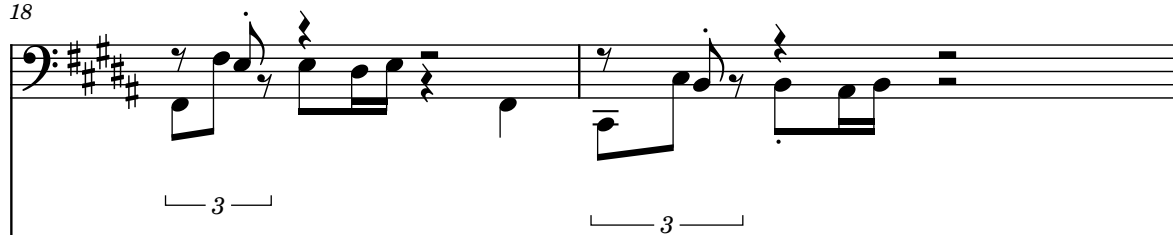
El. B.

B. Guit.

Tn. Klx. Hns.

18

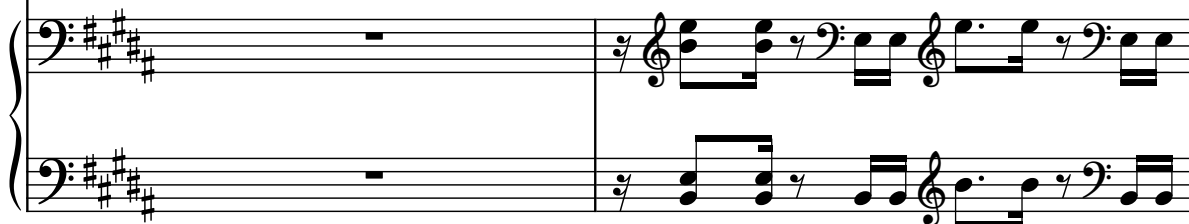
El. B.



B. Guit.

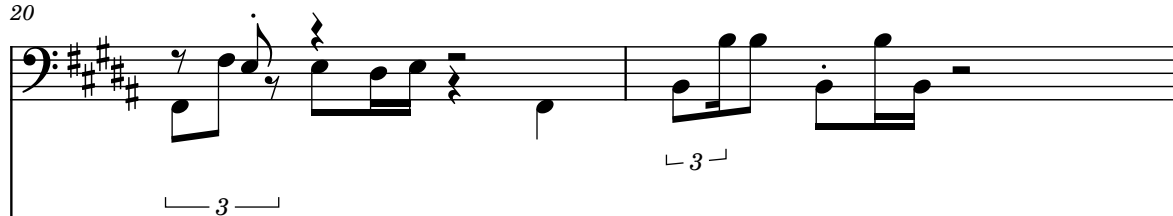


Tn. Klx. Hns.

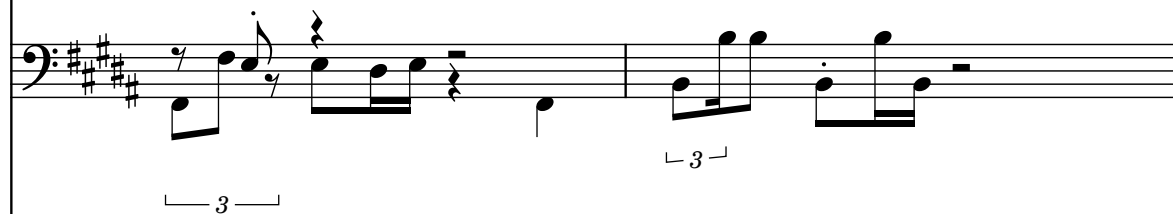


20

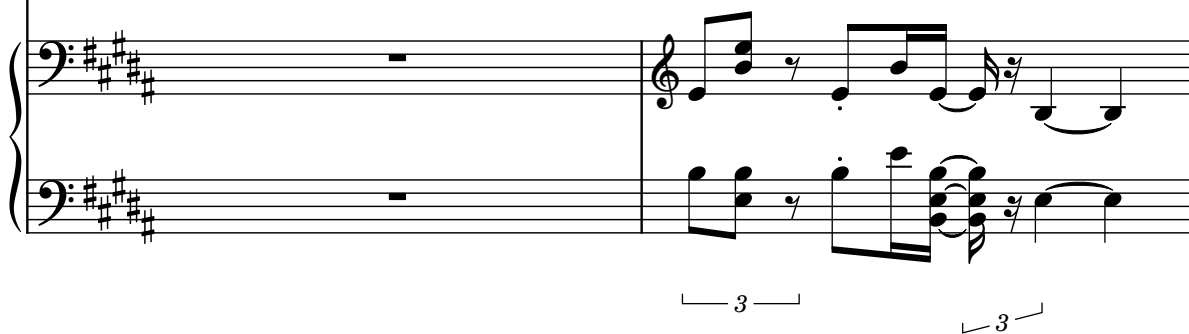
El. B.



B. Guit.



Tn. Klx. Hns.



22

El. B.

B. Guit.

Tn. Klx. Hns.

This system contains measures 22 and 23. The key signature has four sharps (F#, C#, G#, D#). The bassoon (El. B.) and guitar (B. Guit.) parts play a descending eighth-note triplet in measures 22 and 23. The piano (Tn. Klx. Hns.) part features a complex texture with triplets in both the right and left hands, including sixteenth and thirty-second notes.

24

El. B.

B. Guit.

Tn. Klx. Hns.

This system contains measures 24 and 25. The bassoon and guitar parts continue with the descending eighth-note triplet pattern. The piano part maintains the complex texture with triplets in both hands, featuring sixteenth and thirty-second notes.

26

El. B.

B. Guit.

Tn. Klx. Hns.

This system contains measures 26 and 27. The bassoon and guitar parts continue with the descending eighth-note triplet pattern. The piano part maintains the complex texture with triplets in both hands, featuring sixteenth and thirty-second notes.

28

El. B.

B. Guit.

Tn. Klx. Hns.

3

3

3

3

30

El. B.

B. Guit.

Tn. Klx. Hns.

3

3

3

3

32

El. B.

B. Guit.

Tn. Klx. Hns.

This musical system covers measures 32 and 33. The Electric Bass (El. B.) and Bass Guitar (B. Guit.) parts are in the bass clef with a key signature of three sharps (F#, C#, G#). They play a triplet of eighth notes in measure 32, followed by a quarter note in measure 33. The Piano (Tn. Klx. Hns.) part is in a grand staff (treble and bass clefs) with the same key signature. It has a whole rest in measure 32 and a complex rhythmic pattern in measure 33, including eighth and sixteenth notes.

34

El. B.

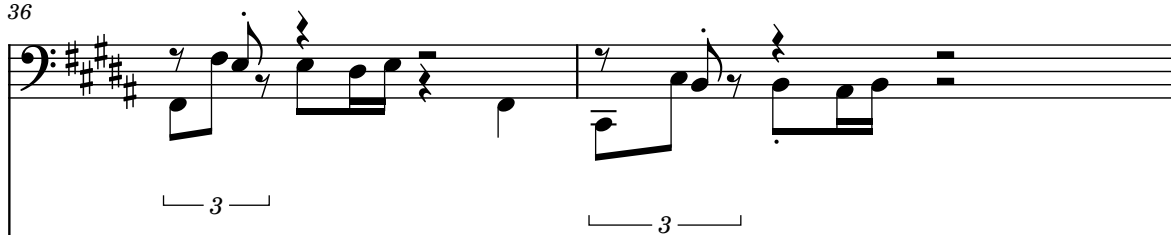
B. Guit.

Tn. Klx. Hns.

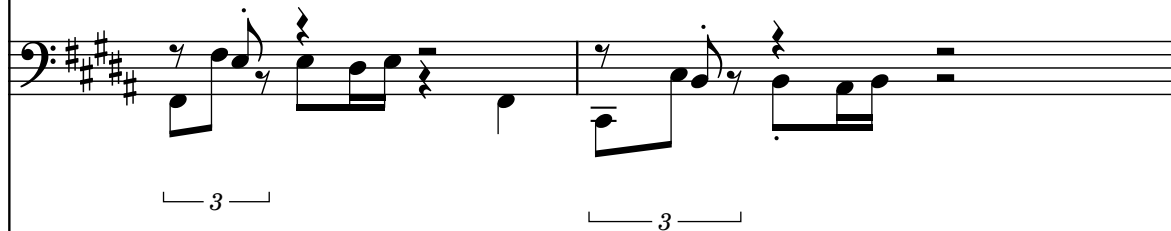
This musical system covers measures 34 and 35. The Electric Bass (El. B.) and Bass Guitar (B. Guit.) parts are in the bass clef with a key signature of three sharps (F#, C#, G#). They play a triplet of eighth notes in measure 34, followed by a quarter note in measure 35. The Piano (Tn. Klx. Hns.) part is in a grand staff (treble and bass clefs) with the same key signature. It has a whole rest in measure 34 and a complex rhythmic pattern in measure 35, including eighth and sixteenth notes.

36

El. B.



B. Guit.

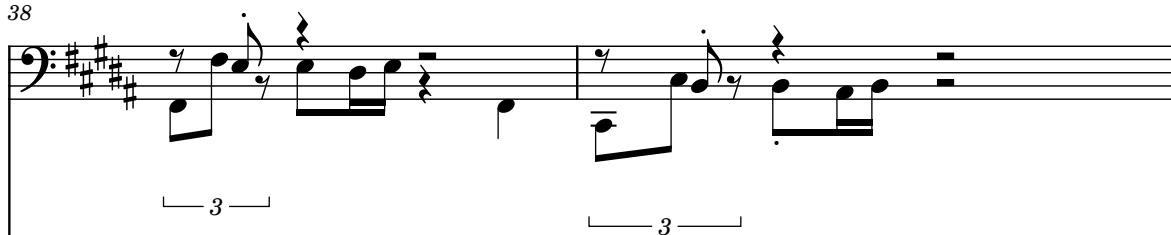


Tn. Klx. Hns.

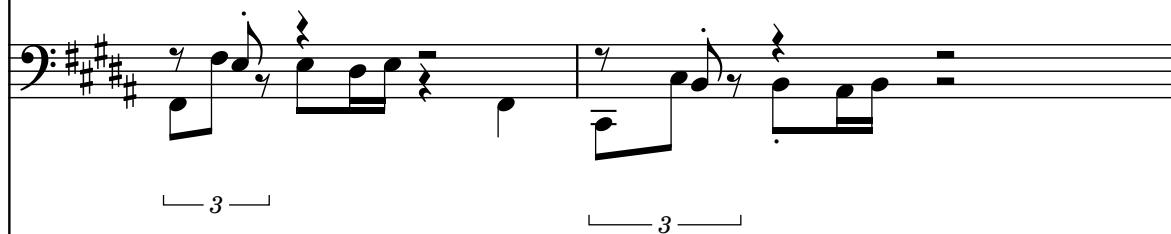


38

El. B.



B. Guit.



Tn. Klx. Hns.



40

El. B.

B. Guit.

Tn. Klx. Hns.

42

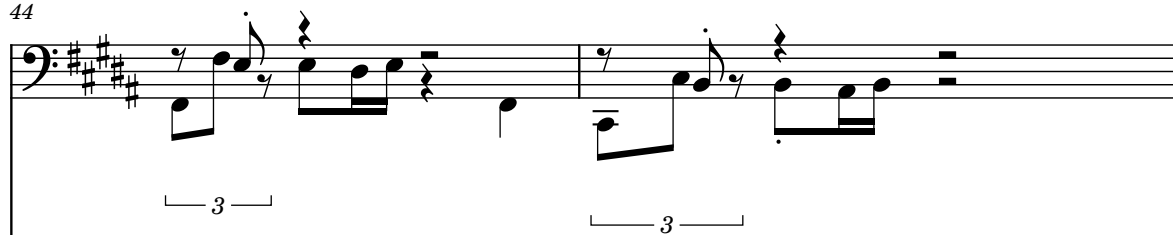
El. B.

B. Guit.

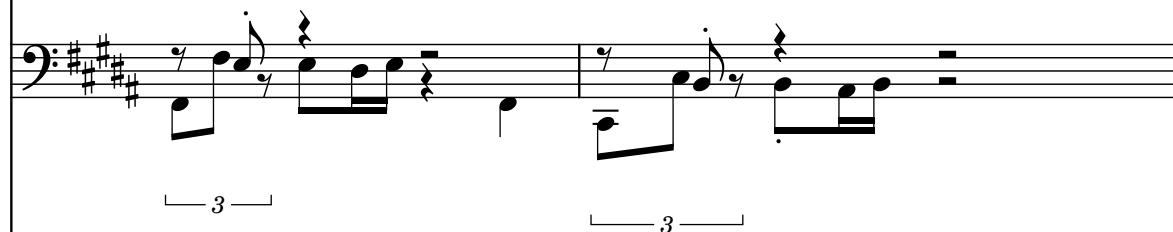
Tn. Klx. Hns.

44

El. B.



B. Guit.

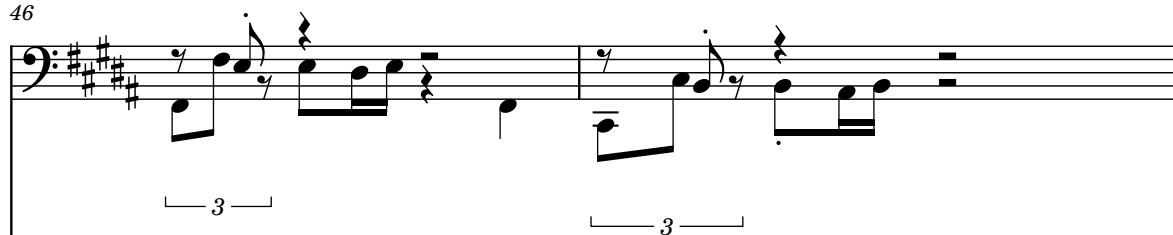


Tn. Klx. Hns.

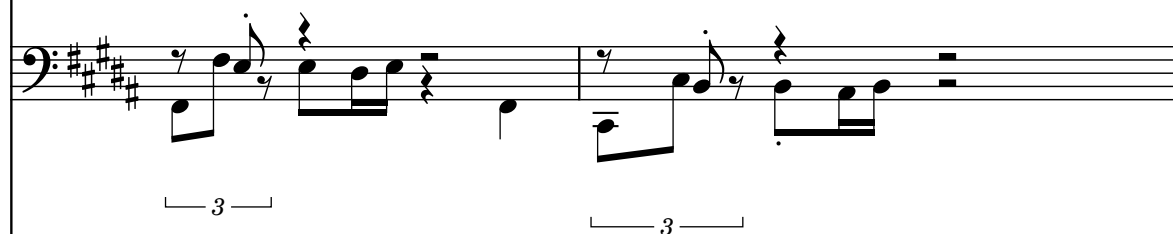


46

El. B.



B. Guit.



Tn. Klx. Hns.



48

El. B.

B. Guit.

Tn. Klx. Hns.

Trills are indicated by a bracket with the number 3.

50

El. B.

B. Guit.

Tn. Klx. Hns.

Trills are indicated by a bracket with the number 3.

52

El. B.

B. Guit.

Tn. Klx. Hns.

This musical system covers measures 52 and 53. It features three staves: Electric Bass (El. B.), Bass Guitar (B. Guit.), and Piano/Keyboard/Harp (Tn. Klx. Hns.). The key signature is three sharps (F#, C#, G#). The El. B. and B. Guit. staves are in bass clef and play a rhythmic pattern of eighth notes with triplets. The Tn. Klx. Hns. staff is in grand staff (treble and bass clefs) and plays a more complex accompaniment, including triplets and chords. Measure 52 shows the initial entry of the instruments, while measure 53 continues the pattern with some harmonic variation in the piano part.

54

El. B.

B. Guit.

Tn. Klx. Hns.

This musical system covers measures 54 and 55. It continues the same instrumentation and key signature as the previous system. The El. B. and B. Guit. staves maintain their rhythmic patterns. The Tn. Klx. Hns. staff provides a steady accompaniment with triplets and chords. Measure 54 shows the continuation of the patterns, while measure 55 introduces some new harmonic elements in the piano part, including a triplet of eighth notes in the right hand.

56

El. B.

B. Guit.

Tn. Klx. Hns.

This musical system covers measures 56 and 57. It features three staves: Electric Bass (El. B.), Bass Guitar (B. Guit.), and Piano/Keyboard/Harp (Tn. Klx. Hns.). The key signature is three sharps (F#, C#, G#). Measures 56 and 57 both contain identical musical notation. The El. B. and B. Guit. staves are in bass clef and play a triplet of eighth notes (F#, C#, G#) followed by a quarter rest, then a quarter note (F#), and finally a triplet of eighth notes (F#, C#, G#). The Tn. Klx. Hns. staff is in grand staff (treble and bass clefs) and plays a triplet of eighth notes (F#, C#, G#) in the right hand, followed by a quarter rest, then a quarter note (F#), and finally a triplet of eighth notes (F#, C#, G#) in the right hand. The left hand plays a quarter note (F#) followed by a quarter rest, then a quarter note (F#), and finally a quarter note (F#).

58

El. B.

B. Guit.

Tn. Klx. Hns.

This musical system covers measures 58 and 59. It features three staves: Electric Bass (El. B.), Bass Guitar (B. Guit.), and Piano/Keyboard/Harp (Tn. Klx. Hns.). The key signature is three sharps (F#, C#, G#). Measures 58 and 59 both contain identical musical notation. The El. B. and B. Guit. staves are in bass clef and play a quarter rest, then a quarter note (F#), followed by a quarter rest, then a quarter note (F#), and finally a quarter note (F#). The Tn. Klx. Hns. staff is in grand staff (treble and bass clefs) and plays a quarter rest in the right hand, followed by a quarter note (F#), then a quarter rest, then a quarter note (F#), and finally a quarter note (F#). The left hand plays a quarter rest followed by a quarter note (F#), then a quarter rest, then a quarter note (F#), and finally a quarter note (F#).

60

El. B.

B. Guit.

Tn. Klx. Hns.

Measures 60-61. The score is for three instruments: Electric Bass (El. B.), Bass Guitar (B. Guit.), and Piano/Keyboard/Harp (Tn. Klx. Hns.). The key signature is three sharps (F#, C#, G#). The time signature is 4/4. Measures 60 and 61 show a repeating bass line for El. B. and B. Guit. with triplets. The piano part enters in measure 61 with a complex rhythmic pattern.

62

El. B.

B. Guit.

Tn. Klx. Hns.

Measures 62-63. The score is for three instruments: Electric Bass (El. B.), Bass Guitar (B. Guit.), and Piano/Keyboard/Harp (Tn. Klx. Hns.). The key signature is three sharps (F#, C#, G#). The time signature is 4/4. Measures 62 and 63 show a repeating bass line for El. B. and B. Guit. with triplets. The piano part enters in measure 63 with a complex rhythmic pattern.

64

El. B.

B. Guit.

Tn. Klx. Hns.

The musical score for measures 64 and 65 is written for three instruments: Electric Bass (El. B.), Bass Guitar (B. Guit.), and Tenor, Keyboard, and Horns (Tn. Klx. Hns.). The key signature is three sharps (F#, C#, G#) and the time signature is 4/4. Measures 64 and 65 show a melodic line in the bass instruments, starting with a triplet of eighth notes (F#, C#, G#) followed by a quarter note (D). The tenor, keyboard, and horn parts are silent in these measures.