

Option House

Composer: Kazumi Totaka

Game: Mario Party

pianogame.org

♩ = 90

Bass Guitar, Bass Guitar 1-A



Bass Guitar, Bass Guitar 1-B

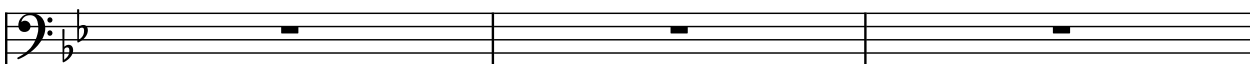


Bass Synthesizer, Bass Synths 1-A



3

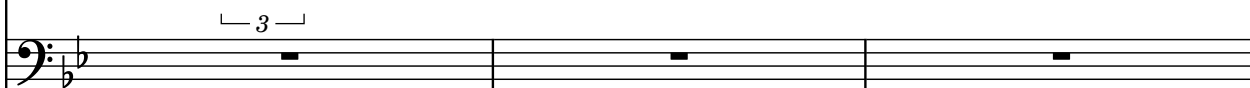
B. Guit.



B. Guit.

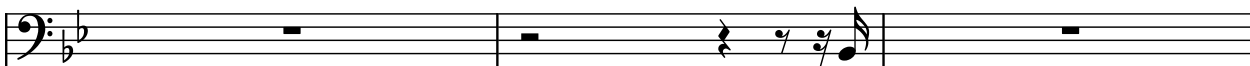


Synth.



6

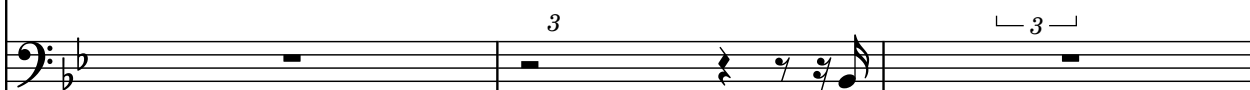
B. Guit.



B. Guit.

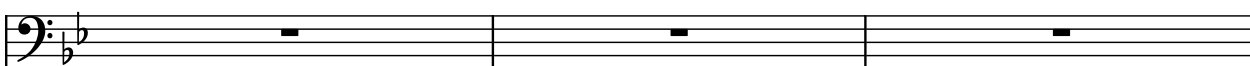


Synth.



9

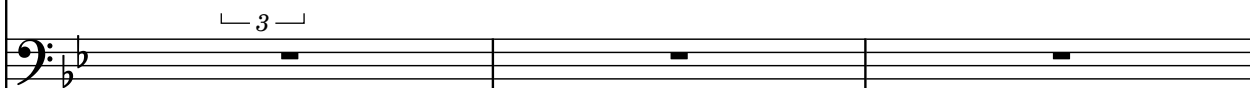
B. Guit.



B. Guit.



Synth.



12

B. Guit.

B. Guit.

Synth.

3

3

3

3

15

B. Guit.

B. Guit.

Synth.

3

3

3

18

B. Guit.

B. Guit.

Synth.

3

3

3

3

21

B. Guit.

B. Guit.

Synth.

3

3

3

24

B. Guit.

B. Guit.

Synth.

Three staves of music in bass clef with a key signature of one flat. The top staff (B. Guit.) has rests in measures 24 and 25, and a quarter note with a slash in measure 26. The middle staff (B. Guit.) has a continuous eighth-note melody. The bottom staff (Synth.) has rests in measures 24 and 25, and a quarter note with a slash in measure 26. Triplet markings are present above the first and last measures of the system.

27

B. Guit.

B. Guit.

Synth.

Three staves of music in bass clef with a key signature of one flat. The top staff (B. Guit.) has rests in measures 27, 28, and 29. The middle staff (B. Guit.) has a continuous eighth-note melody. The bottom staff (Synth.) has rests in measures 27, 28, and 29. A triplet marking is present above the last measure of the system.

30

B. Guit.

B. Guit.

Synth.

Three staves of music in bass clef with a key signature of one flat. The top staff (B. Guit.) has rests in measures 30 and 31, and a quarter note with a slash in measure 32. The middle staff (B. Guit.) has a continuous eighth-note melody. The bottom staff (Synth.) has rests in measures 30 and 31, and a quarter note with a slash in measure 32. Triplet markings are present above the first and last measures of the system.

33

B. Guit.

B. Guit.

Synth.

Three staves of music in bass clef with a key signature of one flat. The top staff (B. Guit.) has rests in measures 33, 34, and 35. The middle staff (B. Guit.) has a continuous eighth-note melody. The bottom staff (Synth.) has rests in measures 33, 34, and 35. A triplet marking is present above the last measure of the system.

36

B. Guit.

B. Guit.

Synth.

3

3

3

3

39

B. Guit.

B. Guit.

Synth.

3

3

3

42

B. Guit.

B. Guit.

Synth.

3

3

3

3

45

B. Guit.

B. Guit.

Synth.

3

3

3

48

B. Guit.

B. Guit.

Synth.

51

B. Guit.

B. Guit.

Synth.

54

B. Guit.

B. Guit.

Synth.

57

B. Guit.

B. Guit.

Synth.

60

B. Guit.

B. Guit.

Synth.

Three staves of music in bass clef with a key signature of two flats. The top staff (B. Guit.) has rests in measures 60 and 61, and a quarter note in measure 62. The middle staff (B. Guit.) has a continuous eighth-note melody. The bottom staff (Synth.) has rests in measures 60 and 61, and a quarter note in measure 62. Triplet markings are present above the first two staves in measures 60 and 61.

63

B. Guit.

B. Guit.

Synth.

Three staves of music in bass clef with a key signature of two flats. The top staff (B. Guit.) has rests in measures 63, 64, and 65. The middle staff (B. Guit.) has a continuous eighth-note melody. The bottom staff (Synth.) has rests in measures 63, 64, and 65. A triplet marking is present above the top staff in measure 65.

66

B. Guit.

B. Guit.

Synth.

Three staves of music in bass clef with a key signature of two flats. The top staff (B. Guit.) has rests in measures 66 and 67, and a quarter note in measure 68. The middle staff (B. Guit.) has a continuous eighth-note melody. The bottom staff (Synth.) has rests in measures 66 and 67, and a quarter note in measure 68. Triplet markings are present above the first two staves in measures 66 and 67.

69

B. Guit.

B. Guit.

Synth.

Three staves of music in bass clef with a key signature of two flats. The top staff (B. Guit.) has rests in measures 69, 70, and 71. The middle staff (B. Guit.) has a continuous eighth-note melody. The bottom staff (Synth.) has rests in measures 69, 70, and 71. A triplet marking is present above the top staff in measure 71.

72

B. Guit.

B. Guit.

Synth.

3

3

3

75

B. Guit.

B. Guit.

Synth.

3

3

78

B. Guit.

B. Guit.

Synth.

3

3

3