

Shackled Snowhorn: Night

Composer: David Wise

Game: StarFox Adventures

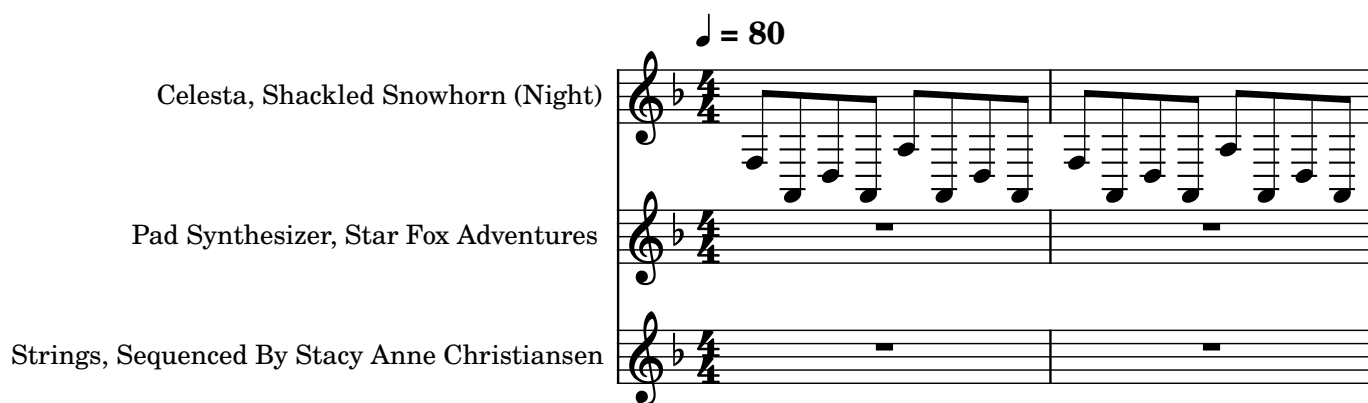
pianogame.org

$\text{♩} = 80$

Celesta, Shackled Snowhorn (Night)

Pad Synthesizer, Star Fox Adventures

Strings, Sequenced By Stacy Anne Christiansen

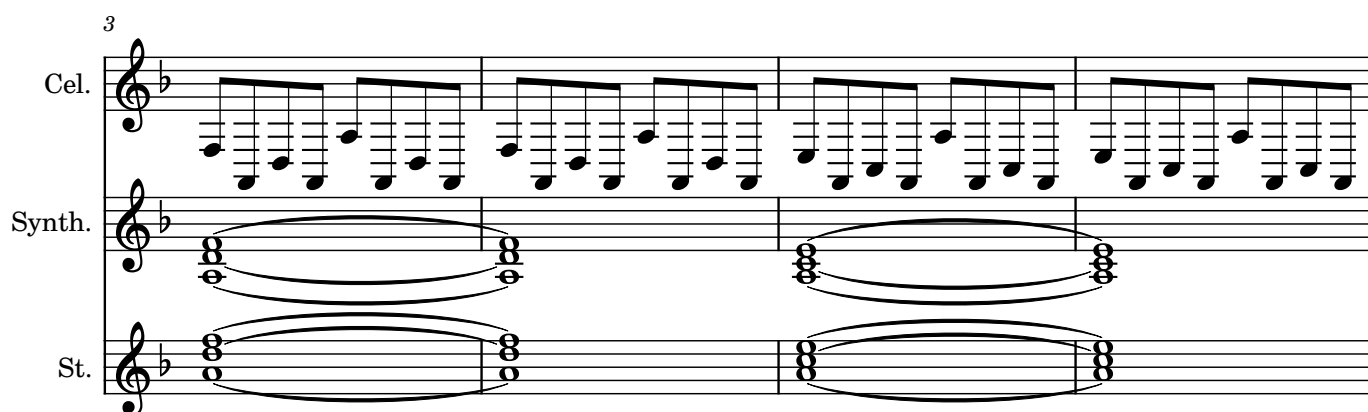


3

Cel.

Synth.

St.

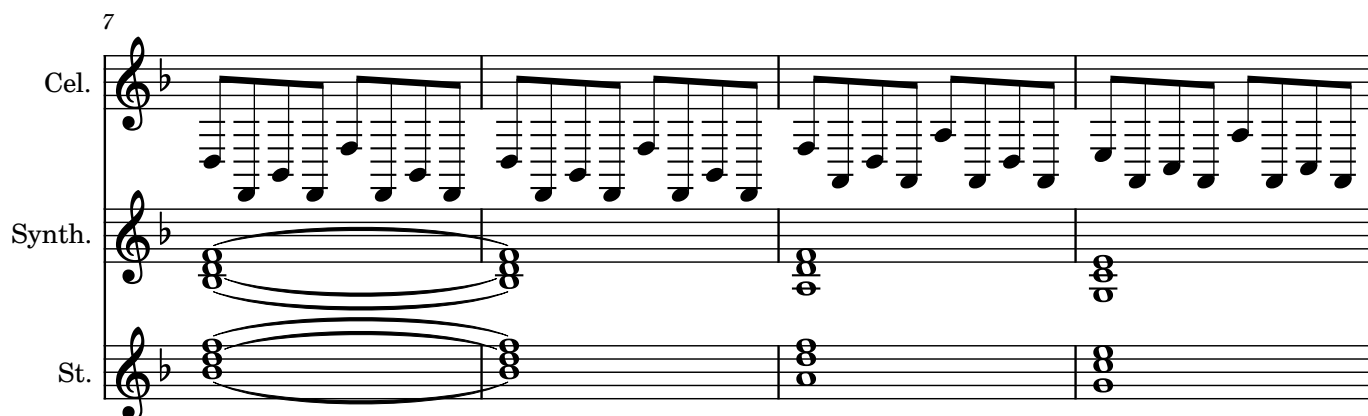


7

Cel.

Synth.

St.

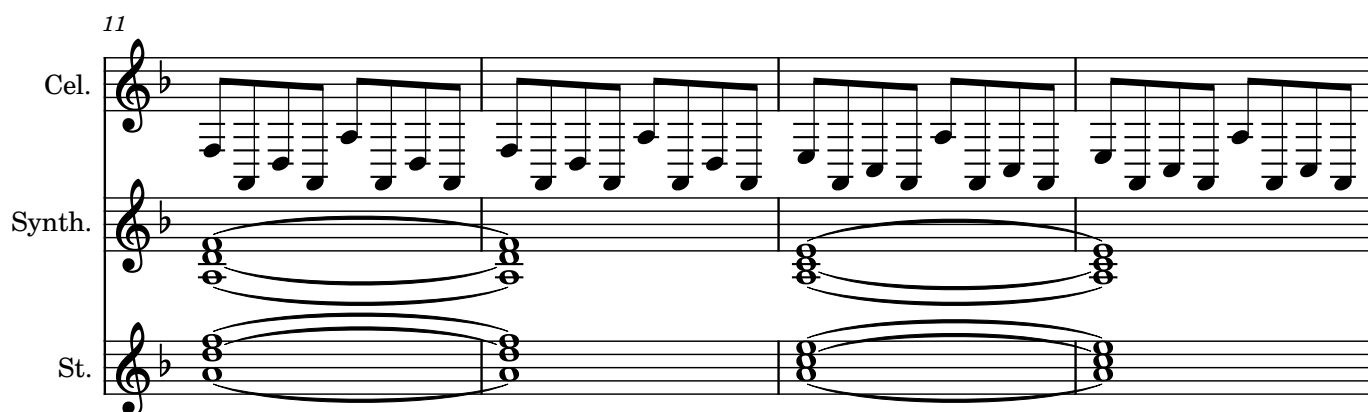


11

Cel.

Synth.

St.

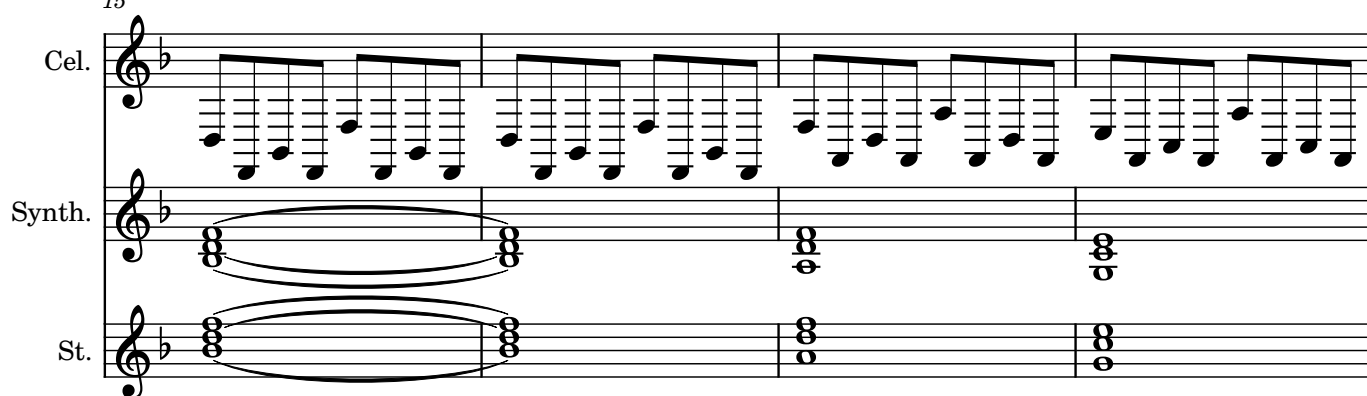


15

Cel.

Synth.

St.

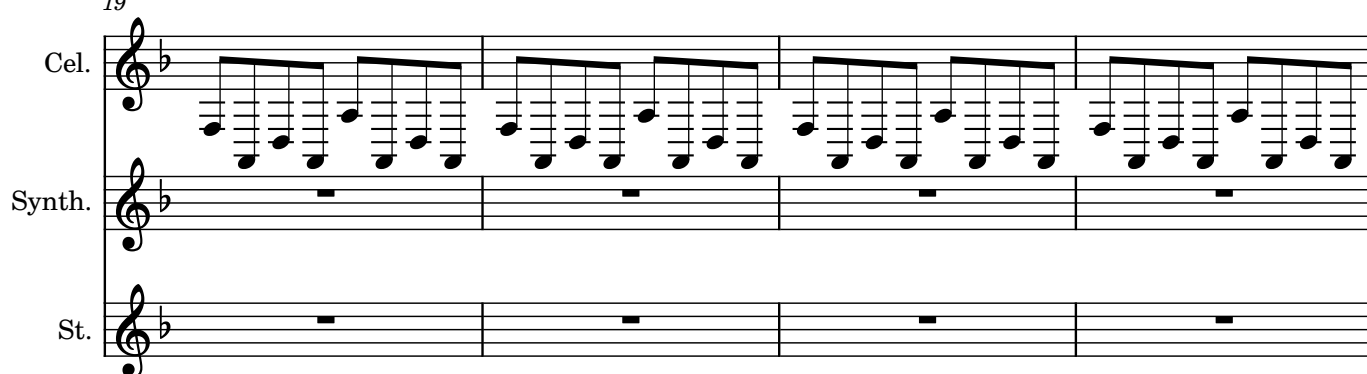


19

Cel.

Synth.

St.

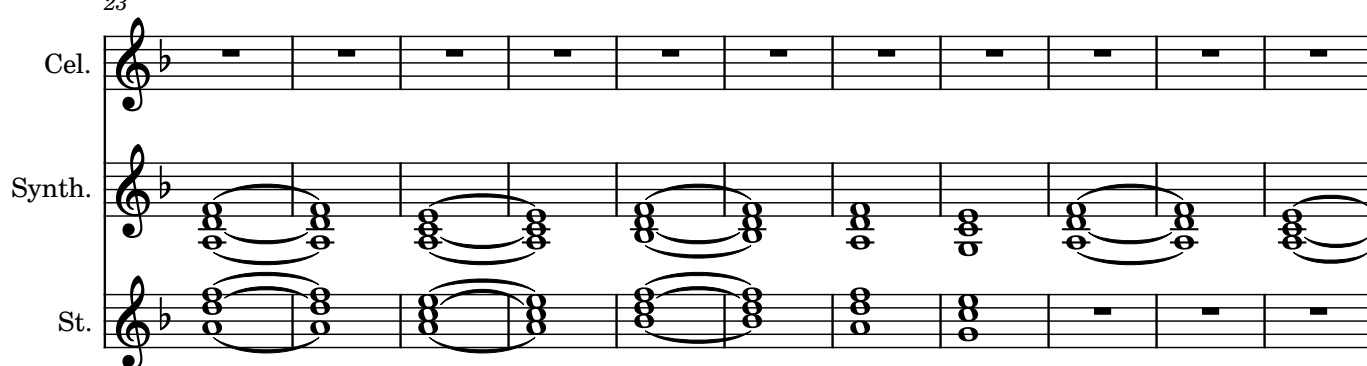


23

Cel.

Synth.

St.

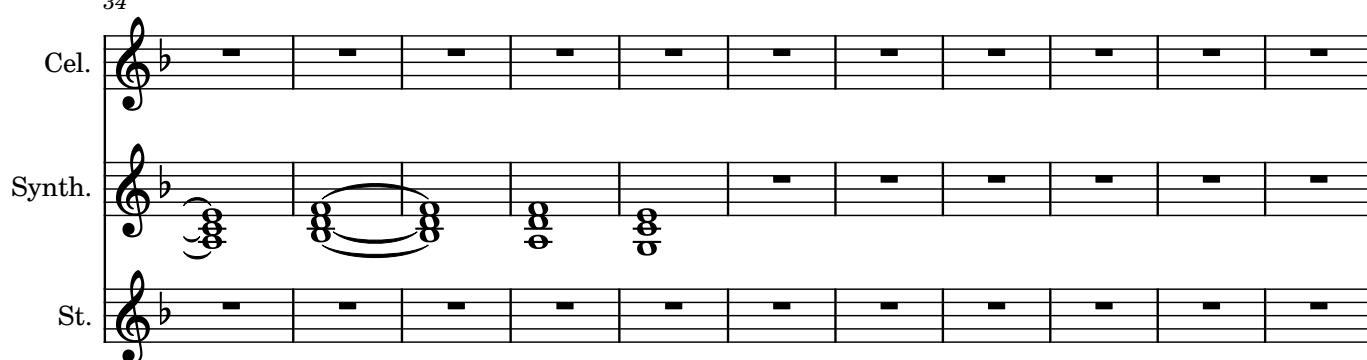


34

Cel.

Synth.

St.



45

Cel.

Synth.

St.

Measures 45-48. The Cello (Cel.) part plays a continuous eighth-note scale in B-flat major. The Synth. and St. parts are silent in measures 45 and 46, then play sustained chords in measures 47 and 48.

49

Cel.

Synth.

St.

Measures 49-52. The Cello (Cel.) part continues with the eighth-note scale. The Synth. and St. parts play sustained chords throughout measures 49-52.

53

Cel.

Synth.

St.

Measures 53-56. The Cello (Cel.) part continues with the eighth-note scale. The Synth. and St. parts play sustained chords throughout measures 53-56.

57

Cel.

Synth.

St.

Measures 57-60. The Cello (Cel.) part continues with the eighth-note scale. The Synth. and St. parts play sustained chords throughout measures 57-60.

61

Cel.

Synth.

St.

65

Cel.

Synth.

St.

72

Cel.

Synth.

St.

83

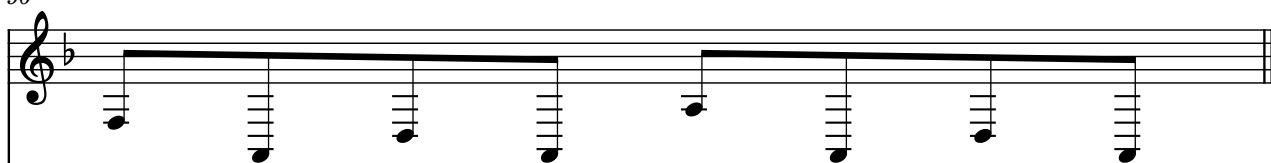
Cel.

Synth.

St.

90

Cel.



Synth.



St.

