

Hero Theme (XG)

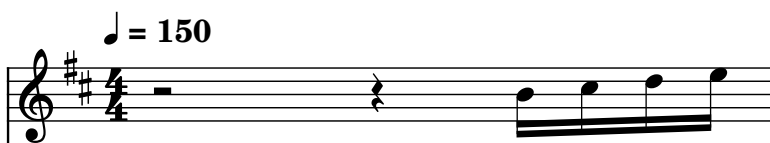
Composer: Shinji Hosoe

Game: Mega Man Battle Network 5

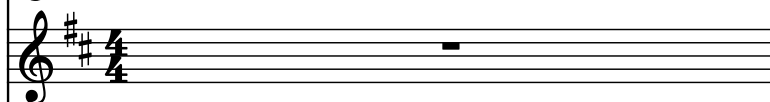
pianogame.org

♩ = 150

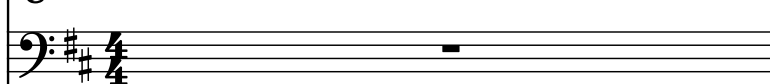
Saw Synthesizer, Sawtooth Lead (Melody)



Mallet Synthesizer, Square Lead (Background)



Bass Synthesizer, Synth Bass 1 (Bassline)



2

Synth.



Mal. Syn.

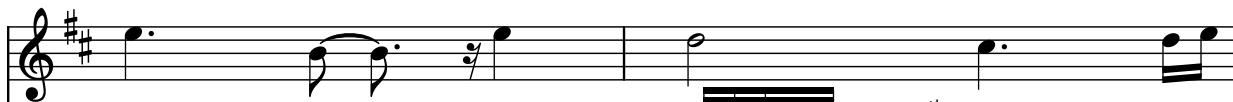


Synth.



4

Synth.



Mal. Syn.



Synth.



6

Synth.



Mal. Syn.



Synth.



8

Synth.



Mal. Syn.



Synth.



10

Synth.

Mal. Syn.

Synth.

Musical score system 10. The top staff (Synth.) is in treble clef with a key signature of two sharps (F# and C#) and contains two whole rests. The middle staff (Mal. Syn.) is in bass clef with a key signature of two sharps and contains a continuous eighth-note melody. The bottom staff (Synth.) is in bass clef with a key signature of two sharps and contains a continuous eighth-note accompaniment.

12

Synth.

Mal. Syn.

Synth.

Musical score system 12. The top staff (Synth.) is in treble clef with a key signature of two sharps and contains two whole rests. The middle staff (Mal. Syn.) is in treble clef with a key signature of two sharps and contains a continuous eighth-note melody. The bottom staff (Synth.) is in bass clef with a key signature of two sharps and contains a continuous eighth-note accompaniment.

14

Synth.

Mal. Syn.

Synth.

Musical score system 14. The top staff (Synth.) is in treble clef with a key signature of two sharps and contains two whole rests. The middle staff (Mal. Syn.) is in treble clef with a key signature of two sharps and contains a continuous eighth-note melody. The bottom staff (Synth.) is in bass clef with a key signature of two sharps and contains a continuous eighth-note accompaniment.

16

Synth.

Mal. Syn.

Synth.

Musical score system 16. The top staff (Synth.) is in treble clef with a key signature of two sharps and contains two whole rests followed by a quarter rest and then an eighth-note melody. The middle staff (Mal. Syn.) is in treble clef with a key signature of two sharps and contains a continuous eighth-note melody. The bottom staff (Synth.) is in bass clef with a key signature of two sharps and contains a continuous eighth-note accompaniment.

18

Synth.

Mal. Syn.

Synth.

20

Synth.

Mal. Syn.

Synth.

22

Synth.

Mal. Syn.

Synth.

24

Synth.

Mal. Syn.

Synth.

26

Synth.

Mal. Syn.

Synth.

28

Synth.

Mal. Syn.

Synth.

30

Synth.

Mal. Syn.

Synth.

32

Synth.

Mal. Syn.

Synth.